

INR-PassE – 5.0 Shareware-Version

(c) Sylvia Zedewitz, 2001-2004, palmianer@s-ze.de

Description:

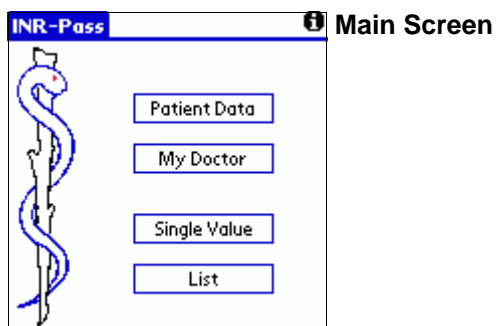
This program will be very useful for all patients on oral anticoagulant therapy. It keeps your blood values (INR/ PT) ! The application can calculate "Min", "Max", "Average".

You can export and print the data for your doctor.

Installation:

Please install "I_INR-PassE-SW.prc" as ever, then tap the "Install INR-Pass" Icon to automatically expand the archive. After the install process, the install file will be deleted automatically. Do NOT deinstall a previous version. Thus already saved data will not be lost.

User's Guide:



Main Screen

Patient Data	Preferences
OAT necessary since:	OAT Drug:
Reason:	(INR or PT):
Diseases:	Targeted Therapeutic Range:
(other)	From: To:
Drugs:	
(other)	
Preferences	

General Information

Please insert the most important general information.

Doctor

Name: Doolittle

Address

(Phone)

Last: 11/20/03

Next: 2/9/04 ;11:30 am

Presc.: 1/6/04

Doctor

Information about your doctor.

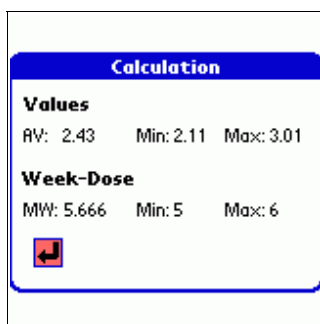
Value	Table
Date: 2/1/04 Value: 2.17	Date Va. Dose Notes
This Value is ▼ good	2/1/04 2.17 6 RR 127/77
Week Dose: 6	1/4/04 2.11 6
Su Mo Tu We Th Fr Sa	7/30/03 3.01 5
1 1 1 0.5 1 1 0.5	
Notes: RR 127/77	

INR/ PT Values

When making a new entry the current date will be automatically registered. A manual change is of course possible.

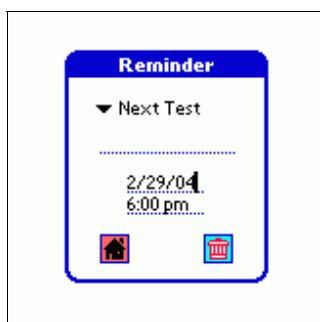
The table allows filtering of the entries.

Calculation (see next picture)



Calculation

The program calculates Min-, Max-, Average



Reminder

Let it remind you of taking your medicine, your next test, etc.

Problems:

Requires PalmOS 3.5 (or above)!

This application was tested on the Palm Vx (OS 3.5, black/white), Palm M505 (OS 4.0, coloured), Palm Tungsten (OS 5.0) and with the Palm OS Emulator. I haven't found any problems which would cause a crash.

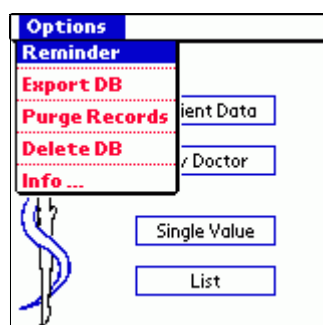
Frequently Asked Questions (FAQs):

-Is it possible to run the application from SD/MMC-Card?

Please avoid installing this program on SD-cards and similar devices. This is only a recommendation, because I received SINGLE reports about problems connected to this subject.

-Where is the alarm-function?

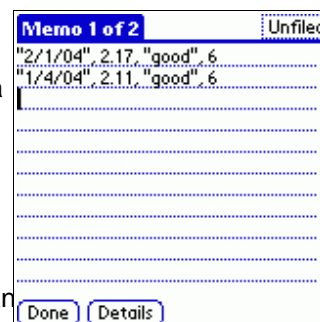
There is no button for it; you will find it in the menu of the Main-Screen.



-I would like to print my data?!

Please choose "Export DB" in the main menu. After a comparison of the data (hotsync) it can be printed from your desktop application. The data can be exported to spreadsheets when it has been saved as a *.txt or *.csv.

After the printing you can, if you like, start a new database ("Delete DB") or delete all records older than 100 days ("Purge records").



Other way to export your data

There is a nice tool for exporting the data to the computer yet: "PDB Explorer" (<http://llusoft.cjb.net/>). With it you can print, resort and make a *.csv for an import into a spreadsheet (Excel). It is freeware. The database for your INR/PT-values is "INRDB1.pdb". You will find it in your Palm backup folder. If you have export your database you will find an entry you can't see in the program: It is a necessary calculation for sorting the data, please hide it before printing/ converting.

Idea: Rudolf Stark, "Selbsthilfegruppe für Patienten mit künstlichen Herzklappen" (<http://www.medizin-forum.de/herzklappen/>)

Restriction of Shareware-Version:

- No „Dose“ in table view
- No "Export" function
- No filter function
- No "Purge Records"
- No support

License:

INR-PassE is shareware. If you find it useful, please register it at PalmGear (<http://store.yahoo.com/pilotgears/sylviazedewitz.html>) or visit my homepage for other possibilities. It only costs \$8. Then you will get the full version without any restrictions.

This software is provided without warranty. Use it at your own risk. I will not take responsibility for any form of damage or loss that occurs using this software.

Sylvia Zedewitz