



NoviiRemote

User's Guide

For Palm OS Devices

*NoviiRemote turns your handheld computer into a Universal Learning Remote Control!
You can control all of your home entertainment equipment with one easy-to-use program.*

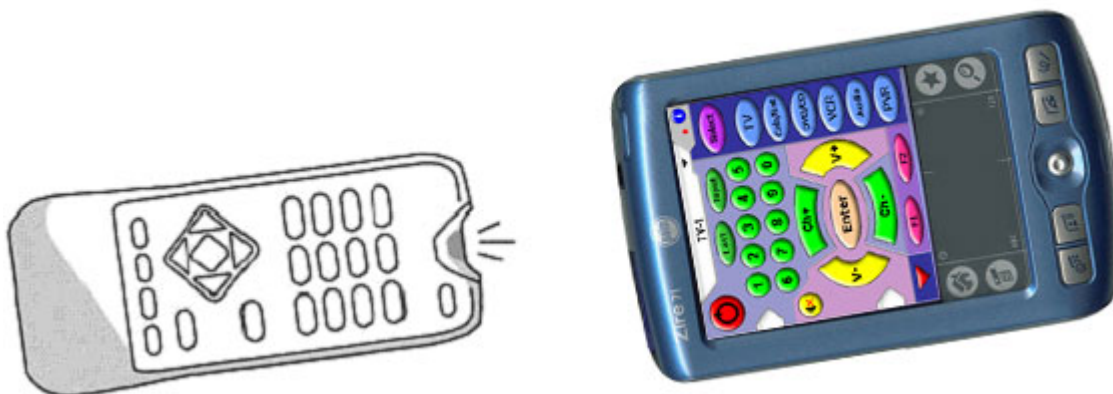
Table of Contents

1. Quick Start	2
2. Introduction	3
3. Install NoviiRemote	4
4. Controlling Your Devices	5
5. Learning IR Codes	6
6. Home Devices Form	8
7. Hard Buttons Form	9
8. IR Settings	10
9. Preferences for Multiple Rooms.....	11
10. Troubleshooting	12
11. System Requirements.....	13
12. About NoviiMedia.....	14



1. Quick Start

1. After launching the NoviiRemote application, check to see if your home entertainment devices match one or more of the pre-loaded codebases that come with NoviiRemote. First, select a category of devices (TV, Cab/Sat, DVD/CD etc.). Next, at the top of the screen, find and click on the arrow to open a pull-down menu of home entertainment devices. If you find a device that matches your equipment, select the device, and try to operate your equipment (skip to Section 4 of this Guide). If you don't find any matching devices among the pre-loaded codebases, move on to Step 2 below.
2. Place your handheld computer and the remote control from your device (TV, DVD, etc.) on a table, facing each other, with about 5 inches in-between. The infrared ports of each device must be facing each other.
3. Next, launch the NoviiRemote program on your handheld computer, open the program's menu using the menu button to the left of the graffiti area, and select Home Devices.
4. Click on the type of the device you would like to "teach" the remote control codes to NoviiRemote. Click "Add", choose a category, assign a name to your new codebase, and click "Start learning" to begin.
5. Click on any button on the NoviiRemote interface, then press the corresponding button on your remote control and hold it until the handheld produces a beeping sound, and then release the button on the remote. Repeat for each button you wish to use.
6. When you have completed learning all the buttons you wish to use, click "Stop Learning", and you are ready to use NoviiRemote as your remote control!





2. Introduction

NoviiRemote is a software program that provides a convenient means of controlling your home entertainment devices, such as TVs, VCRs, satellite and cable boxes, right from your handheld computer.

To use NoviiRemote, you must allow the program to "learn" the infrared signals from the standard remote controls you use to control your devices. You may alternatively try to use one of the pre-loaded codebases in NoviiRemote (see section 1.1 of this Guide).

The program works by beaming infrared signals stored in special databases called codebases.

To set up the program for your device, select the proper category (TV, Cab/Sat, DVD/CD, VCR, Audio or PVR) from the Home Devices menu, **click the Add button**, and then assign a name to the active codebase that will control your device. Next, simply tap the virtual images of each remote button on the screen of your handheld while pushing the corresponding buttons on your remote control, one-by-one.

Use the Home Devices form to perform routine operations with your codebases, including creation, learning, assigning a hot codebase, deletion, etc. (see Section 6 – Home Devices).

Use the Hard Buttons form to learn what each hard button on your handheld will do, and to customize the hard buttons on your handheld with the most typical actions (see Section 7 – Hard Buttons). For example, you may customize the hard buttons to change the channels and the volume level, or any other remote function.

Use the Preferences menu to set up the remote for each room of your house (Section 9).

TIPS:

- Click the Menu button on your handheld computer (usually located to the left of the graffiti area, below the Home button) to open the drop-down menu you will need for performing many of the required operations in NoviiRemote.
- Click the Setup button in the upper right corner of the interface to quickly enter the Home Devices menu.

For more information including tutorials, please visit our website at www.novii.tv.



3. Install NoviiRemote

Please visit our website at www.novii.tv for more information about where to download NoviiRemote software.

TIP:

First download the free trial version of NoviiRemote. Check thoroughly that NoviiRemote is capable of controlling your home devices. After confirming that NoviiRemote works for you, we encourage you to order the full commercial version of NoviiRemote.

NOTE:

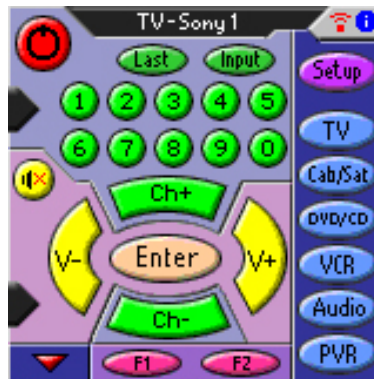
The only difference between the trial version and the full commercial version is an expiration period built into the trial version. The trial version will stop working 10 days after the very first launch.

Installation

1. Download the zip-file containing NoviiRemote software.
2. Un-archive the downloaded zip-file.
3. Put the file NR_UserGuide_Palm251_iv.pdf (this document) into a convenient place, where you can access it again. This is the User Guide in PDF format.
4. Read carefully the end user license agreement for NoviiMedia software, license.txt.
5. Refer to the readme.txt document for info concerning the contents of the zip-file. Select the standard version (160*160), high resolution (320*320) or grayscale version of the software. You may also select a special high-resolution version for Sony Clie OS 4.x devices.
6. Install the appropriate prc files and NoviiRemoteHelp.pdb to your Palm handheld.
Important. You must install only ONE prc-file, not all four listed above. If you've installed the incorrect prc-file, just install the one needed from the above list. The new file will write over the incorrect file on your PDA.
7. The rest of the pdb-files are preloaded databases prepared for controlling popular AV-equipment. If you have a trial or previous version of NoviiRemote already installed on your handheld, you should not install these pdb-files, as they can overwrite your customized codebases.
8. After completing the HotSync operation you can immediately begin using NoviiRemote!



4. Controlling Your Devices



To select a device you wish to control, press one of the six category buttons on the right side of the NoviiRemote interface: TV, Cab/Sat, DVD/CD, VCR, Audio or PVR. In turn, NoviiRemote displays a virtual remote screen containing a set of buttons typical for the selected category of home devices. Next, select a hot codebase capable of controlling your device, by clicking on the small triangle at the top panel of the screen, and selecting the appropriate codebase from the pull-down list.

To control your device, just tap the virtual images of the remote buttons on the screen of your handheld, while pointing your handheld computer at the home entertainment device.

TIPS:

- Click the red Arrow in the lower left-hand corner of the user interface to enter a second screen for each device, which provides additional functionality and more options for customizing NoviiRemote.
- Click the red Arrow again to return to the primary interface for each device.
- Use the Hard Buttons on your device for the actions you use the most, by customizing the commands (see Section 7).
- Try using your thumb or fingernails to click the remote buttons on the screen of your handheld. Some users prefer to use one hand to operate NoviiRemote. Keep your stylus in place, use the hard buttons and your thumb or fingernails for everything!
- If NoviiRemote does not control your device, first check to verify that you have selected the appropriate hot codebase, indicated at the very top of the NoviiRemote screen.
- If you do not have the appropriate codebase, press the Menu button and create a new codebase by using the Add button in the Home Devices form.

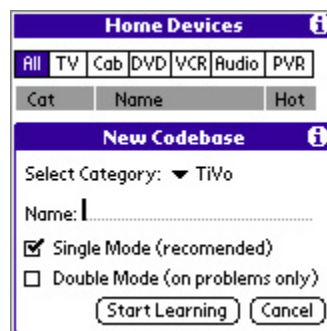


5. Learning IR Codes

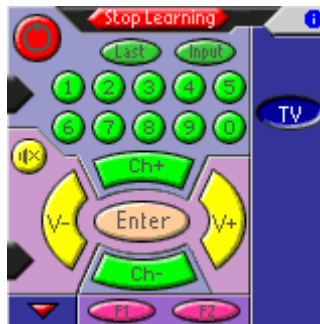
If your device does not have a pre-assigned codebase, it is easy to "learn" a new one to your handheld. This is done by placing your handheld computer and the remote control from your device (TV, DVD, etc.) on a table, facing each other, with about 5 inches in-between. **The infrared ports of each device must be facing each other.**



Open the program's menu using the menu button to the left of the graffiti area, and select Home Devices. Click on the type of the device you would like to "teach" the remote control codes to NoviiRemote. Click "Add", choose a category, and assign a name to your new codebase.



In most cases it is sufficient to perform learning in Single Mode. However, if you face problems with switching on your TV receiver to channels like 11, 22, 33, etc, or if the Mute button does not work properly, then you should perform learning in Double Mode. This requires double learning of each button. Double learning enhances the infrared codebase stored in your handheld computer.



Next, click "Start Learning" to begin.

To learn any button, e.g. Ch+, first tap its virtual image on the screen of the handheld. Then press the button 'Ch+' on your remote and hold it until the handheld produces a beeping sound, and then release 'Ch+' on the remote. You will notice a change in the button's image on the handheld as you complete this process.

NOTE:

When learning in Double Mode, the program prompts you to perform the learning steps two times per each button.

TIPS:

- Click the red Arrow in the lower left-hand corner of the user interface to enter a second screen, which contains additional buttons to learn.
- Click the red Arrow again to return to the primary interface.
- Use the buttons F1 – F4 in NoviiRemote for special remote control buttons or buttons which do not have a corresponding button on the NoviiRemote interface.

When you have completed learning all the buttons you wish to use, click "Stop Learning", and you are ready to use NoviiRemote as your remote control!



6. Home Devices Form

Use the Home Devices form to perform routine operations on your codebases:

1. Use All, TV, Cab, etc. buttons to filter a list of codebases.
2. Use the Add button to create a new codebase and learn it.
3. Use ReLearn button to double learn the selected codebase (for difficult home devices).
4. Use the Hot button to make the selected codebase hot. If the codebase is already hot, its category will not be assigned with any codebase.
5. Use the Delete button to delete the selected codebase. All infrared signals stored inside the deleted codebase will be lost, and you will not be able to control the given device anymore! To restore the codebase you will have to perform learning from your original remote control.
6. Use the Rename button to rename the selected codebase.

The screenshot shows the 'Home Devices' form with a tabbed interface at the top containing 'All', 'TV', 'Cab', 'DVD', 'VCR', 'Audio', and 'PVR'. The 'TV' tab is selected. Below the tabs is a table with three columns: 'Cat', 'Name', and 'Hot'. The table contains the following entries:

Cat	Name	Hot
TV	My TV Philips	<input checked="" type="radio"/>
TV	SONY-1	<input type="radio"/>
Cab/Sat	CABLE BOX-1	<input type="radio"/>
DVD/CD	TOSHIBA DVD-1	<input type="radio"/>
VCR	PANASONIC	<input type="radio"/>
Audio	PIONEER AMP	<input type="radio"/>

Below the table are two rows of buttons. The first row contains 'Add', 'ReLearn', 'Hot', and 'Delete'. The second row contains 'Rename', 'Beam', 'Select', and 'Done'. A vertical scrollbar is visible on the right side of the table.

7. Use the Beam button to send the selected codebase to another handheld.
8. Use the Select button to make the selected codebase hot and return to the virtual Remote screen from which you can immediately control your device.
9. Use the Done button to close the Home Devices form and return to the Remote screen.



7. Hard Buttons Form

Hard buttons are at the bottom of your handheld, and are used in the program to perform remote control functions. Use the Hard Buttons form to customize the hard buttons of your handheld. For example, you may customize the hard buttons to change the channels, the volume level, or any other functions you perform most often. **Spend a moment to customize your hard buttons to get the most enjoyment using NoviiRemote!** While using the hard buttons, you won't have to take out your stylus, and can operate NoviiRemote with just one hand.

Hard Buttons	
Change button assignments here:	
--- Common ---	
Date Book:	TV/Mute
Address:	TV/Vol-
To Do List:	TV/Vol+
Note Pad:	TV/Power
Voice Memo:	PalmOS
--- 5-way Navigator ---	
OK Cancel Default	

To customize a hard button, select the Hard Buttons form from the Menu, then tap the text enclosed in the dotted rectangle on the right side. The program will display a window where you should first select a Category and then select the Action you would like assigned to the button.

The special category "Others" permits the assignment of special actions to any hard button:

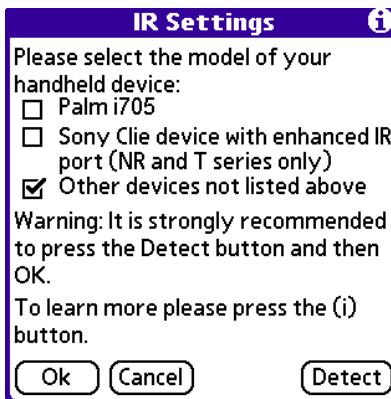
- **Disable:** a disabled button won't perform any action
- **PalmOS:** restore the regular PalmOS assignment of the button
- **NextCateg:** switch the virtual remote screen to work with the following category of devices
- **PrevCateg:** switch the virtual remote screen to work with the previous category of devices
- **HomeDevices:** launch the Home Devices form

Important! The Hard Buttons assignments can be changed and will function only on the virtual remote screen of your handheld. They do not work from within the Home Devices, Preferences and other screens.



8. IR Settings

Use the IR settings menu for manual tuning of the infrared driver of NoviiRemote. This is required only when trouble-shooting.



To perform this function, open the IR Settings from the menu, and select the proper model of your handheld, then press the OK button. The best way to tune the driver is to press the Detect button. In response the driver detects the model of your handheld and pre-selects one of the check boxes. If the driver choice corresponds to the actual model of your handheld, you may safely press the OK button.

If you are sure that the driver choice is not correct, you may perform manual tuning. But be careful with manual tuning of the driver! The wrong setting may cause NoviiRemote to perform improperly, dramatically decreasing the range, or locking up your handheld. If your handheld locks, please perform a reset of the device.

When using manual tuning, please take into account the following hints:

- If you are sure that your handheld is the Palm i705 model, Kyocera 7135 or Samsung i500, check the first check box and press the OK button.
- If your handheld is one of the Sony Clie devices with an enhanced IR port, check the second check box and press the OK button. At present the following Sony models of NR/T series are known to have the enhanced IR port: NR60, NR70, NR70V, T400, T415, T425, T600C, T615C, T625C, T650C, T665C and T675C.
- If your handheld is not among those listed above, check the third check box "Other Devices" and press the OK button.



9. Preferences for Multiple Rooms

Use Preferences to set up the remote for each room of your house. You can create an easy and quick way of switching all devices in the given room to the correct settings.

NoviiRemote allows you to save the following preferences:

- The names of up to six codebases which you've made hot, for each room you set up in Preferences.
- Custom assignments to hard buttons for each room.

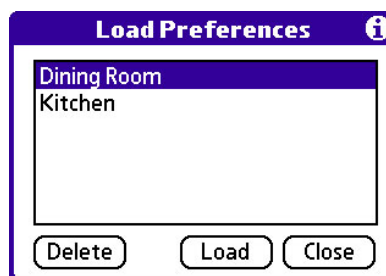
To prepare Preferences for a given room please perform the following actions:

- Launch the Home Devices form, and identify the codebases capable of controlling the home devices located in the given room. Make those codebases hot (in use) by clicking the Hot button. You should see a black dot appear next to the device.
- Next, launch the Hard Buttons form and tune the hard buttons for your device (see Section 7). Try to assign the commands you use most frequently in this room to the hard buttons for ease of use.
- When you have all the setting for the given room entered, launch the Preferences menu, select the Save item from the pull down menu, enter the name of the database where your preferences will be saved, and press the Save button.

TIP:

Most users assign names like Kitchen, Dining Room, etc. It's easy to set up the remote for each room of your house!

Switching between rooms: NoviiRemote allows you to quickly load previously saved preferences for each room, from their respective databases. To load preferences for a room, launch the Preferences menu, select "Load" from the pull down menu, then select the name of the database in the list and click the Load button. (Note: you must first set up your preferences as described in the steps above!)



Use the Delete button to delete Preferences you no longer need.



10. Troubleshooting

If you experience difficulties controlling any home device, try the following:

- First, be certain that you have either selected and tested a pre-loaded codebase which matches your device (Section 1.1), or have created a new codebase in the Home Devices form (Section 5).
- Next, confirm that you have learned the infrared codes for your device, as described in Section 5.
- While learning remote commands, be certain that the infrared ports of the remote and your Palm OS handheld are facing each other.
- Next, verify that you have selected the appropriate codebase, whose name should appear at the top of the Remote interface.
- Try different distances and angles for beaming the infrared signals from your handheld computer to the entertainment device.
- If your home device still does not work with NoviiRemote, next try "Double Learning" the infrared codes. With some home devices, double learning will help make the infrared signals stored in the codebase more precise. See Section 5 above for details.
- Be certain that the batteries in your handheld are not weak. If depleted, replace or recharge the batteries in your handheld and try again.
- Be certain that the distance from your device to the handheld is sufficient for NoviiRemote to work properly. Depending on the model of the handheld and the model of equipment you are trying to control, the maximum range is 5-40 feet.
- If the main user interface does not contain some of the buttons needed to control your device, click the red Arrow in the lower left-hand corner of the interface to enter a second screen, which provides additional functionality.
- If you face problems with your equipment such as switching your TV receiver to channels like 11, 22, 33, etc, if the button Mute does not work properly, or other functions do not work, try re-learning your codebase by selecting ReLearn from the Home Devices Form. Go to the Home Devices form by pressing the Menu button. Next, select the problematic codebase in the list of codebases and press the ReLearn button. Then check the Double Mode box and click "Start Learning" to begin. When learning in Double Mode, the program prompts you to perform the learning steps two times per each button.
- If problems persist, please consult our website www.novii.tv for additional troubleshooting solutions.

Review the Tutorials, FAQs, Online Support and other information available on our web site. If you still can't find answers to your questions, please write to us at: service@novii.com



11. System Requirements

NoviiRemote for Palm OS ®, ver 2.51, released in June 2004:

- Palm OS version 3.5, 4.x, 5.x, 560 KB of free memory for color version of the program, or 420 KB for grayscale version, or 1355 KB for high resolution version.
- Additional memory for databases (called codebases) used to control home devices, at 5-7 KB per codebase.

Compatible Devices:

- palmOne Zire, Zire 21, Zire 31, Zire 71, Zire 72
- palmOne Tungsten C, E, T, T2, T3, W
- palmOne Treo 600 and Handspring Treo devices *
- Palm m500 series, m100 series, i705, IIlc, IIIxe, Palm V and Vx with Palm OS 3.5 or higher installed
- Sony CLIE OS 5 - NX series, NZ series, TG50 **
- Sony CLIE OS 4 - NR series, T series
- Other Sony CLIE devices - SL series, SJ series, N series, etc. *
- Tapwave Zodiac and Zodiac 2
- Garmin iQue 3600
- Kyocera 7135 *
- Handspring Visor Series with Palm OS 3.5 or higher installed
- Samsung SPH-i330*, i500

* **Warning:** The infrared port of some Treo and Sony Clie devices, Kyocera 7135 and Samsung i-330 are slightly underpowered, and effective range may be 1-3 meters. However, for most devices the range is 5-15 meters.

** **Warning:** The program does not yet support the following Sony Clie OS 5 devices: TJ series, UX series, TH55, UK-50. It also does not support devices running Palm OS 3.1/3.3 or lower, e.g. Palm III, Palm IIx, Palm IIle, Palm V, etc.



12. About NoviiMedia

NoviiMedia is engaged in the development of several lines of products for handheld computers. We are committed to delivering high quality solutions to the growing number of handheld owners who use their devices for fun and entertainment.

Check Novii's web site for FAQs, Online Support, Tutorials and other information about our products at:

www.novii.tv

www.novii.com

If you can't find answers to your questions on the web site, please write an e-mail to:

service@novii.com

To receive information about upgrades to this software and additional news from Novii about our products, sign up for the **NoviiNewsletter** on our website:

www.novii.tv/support