

# **Natara Quanto**

Time Measurement Tool for the Palm Computing Platform

## **User Manual**

## **Natara Software, Inc.**

909 E. Ogden Ave., Suite C  
Naperville, IL 60563

<http://www.natara.com>

*Copyright © 2006 Natara Software, Inc. All rights reserved. Reproduction, adaptation, or translation of this manual is prohibited without prior written permission of Natara Software, except as allowed under copyright laws.*

*Natara and Quanto are trademarks of Natara Software, Inc.. All other product names used in this document are trademarks or registered trademarks of their respective owners.*

# Table of Contents

Foreword .....	0
<b>Part I Introduction .....</b>	<b>3</b>
1 Introduction .....	3
2 Installation .....	3
3 Menus and Toolbars .....	6
4 Purchase a License .....	6
5 Requirements & Limitations .....	7
Requirements .....	7
MathLib .....	8
Limitations .....	8
6 Uninstalling .....	8
7 What's New .....	8
<b>Part II Configuration .....</b>	<b>9</b>
1 First Time .....	9
2 Activity Names .....	9
Detail Names .....	10
3 Application Preferences .....	11
Exclude from Stats .....	12
4 Font Size .....	12
<b>Part III Main Views .....</b>	<b>14</b>
1 Current Activity View .....	14
Activity Interrupt .....	15
2 History View .....	16
Activity Details .....	17
Split Activity .....	17
3 Statistics View .....	18
4 Pie Chart View .....	19
<b>Part IV Other Dialogs .....</b>	<b>20</b>
1 Export .....	21
2 Purge .....	21
<b>Part V How Do I ... ? .....</b>	<b>23</b>
1 Delete old records .....	23
2 Backup the activity database .....	23
<b>Part VI Reference .....</b>	<b>24</b>

<b>1</b>	<b>Toolbar Icons .....</b>	<b>24</b>
<b>2</b>	<b>Menu Shortcuts .....</b>	<b>24</b>
<b>3</b>	<b>Contacting Natara Software .....</b>	<b>25</b>
<b>4</b>	<b>Software License Agreement .....</b>	<b>26</b>
	<b>Index</b>	<b>29</b>

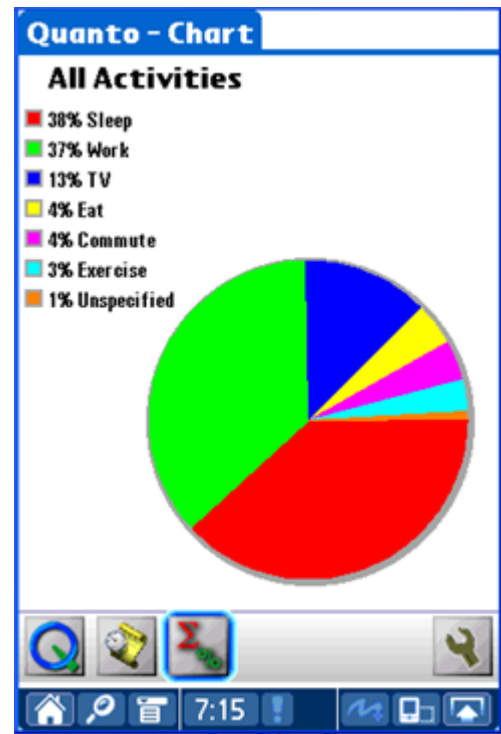
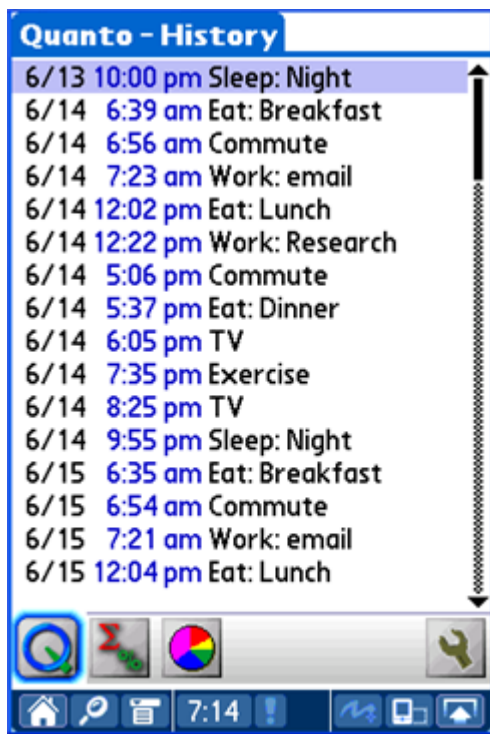
# 1 Introduction

## 1.1 Introduction

This manual describes the features of the Natara Quanto™ time measurement tool for Palm OS handheld devices (PDA).

Improve your productivity or life style by analysing how you spend your time.

- Show your boss (maybe you) why it's hard to get work done on that project.
- With your crazy schedule are you getting enough sleep?
- How is your balance of work and family?



PalmOne Tungsten T5 full screen support

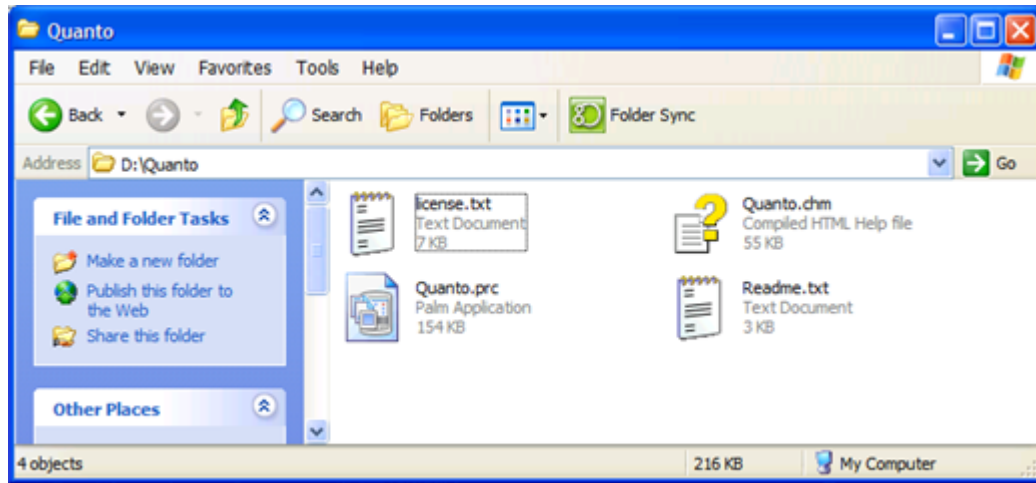
Quanto is provided as a 3 day fully functional trial version. If you find the application useful, please [purchase](#) a license for continued use.

## 1.2 Installation

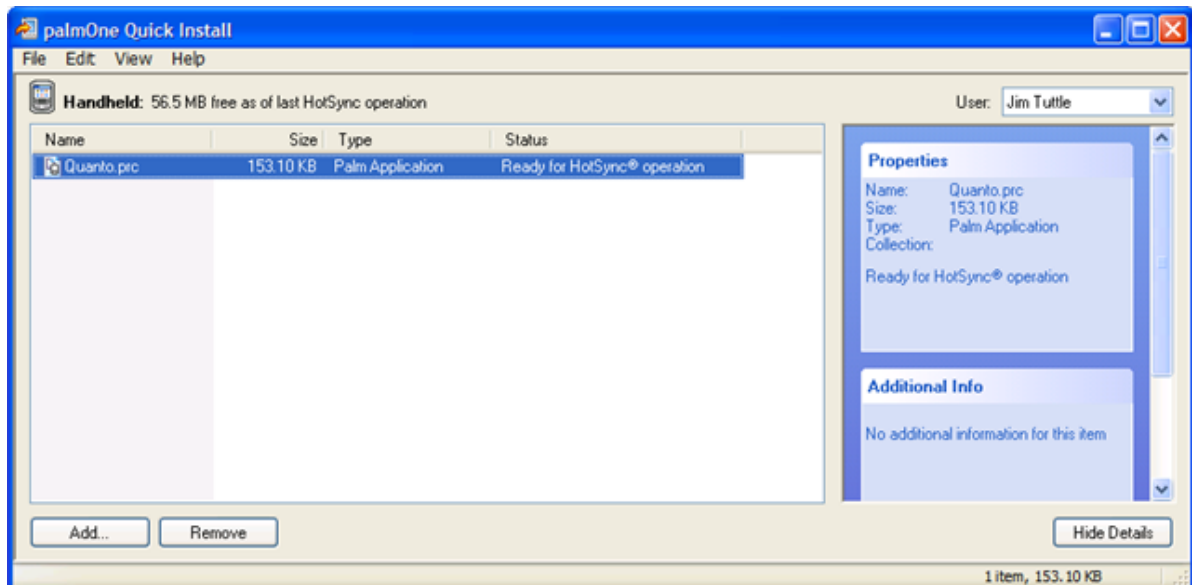
Installing the Natara Quanto time measurement tool onto your handheld PDA device only takes a few steps. The following example shows the steps required when using

a desktop machine running the Windows operating system. Consult the user manual provided with the handheld synchronization software if you use another desktop operating system, for example Mac OS X or Linux, for instructions on installing a Palm OS application file.

Locate the directory where you extracted the Quanto files.



Double-click on the Quanto Palm Application file (extension PRC) to launch the Palm Install Tool or the PalmOne Quick Install depending on your handheld PDA device model. Quanto should be listed as one of the files to be installed.

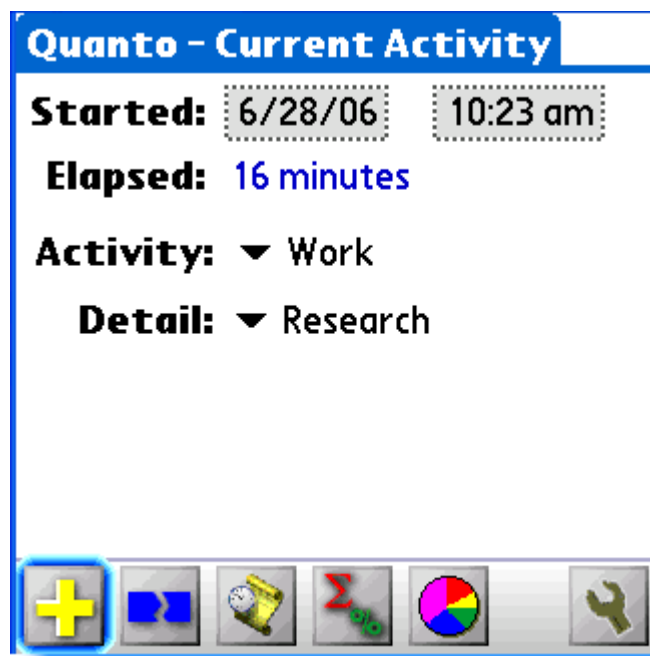


Click on the Done button. Place your handheld PDA device in its cradle and push the button to start a synchronization. When the synchronization completes, tap the home button to display the application launcher. The Quanto icon will be displayed

on the application launch screen.



Tap on the Quanto icon and the application will display the Current Activity view.



## 1.3 Menus and Toolbars

The most commonly used commands are provided as toolbar buttons on the bottom of each screen. The full list of toolbar buttons is provided under the [reference topic](#) of this user manual.

All commands are available on the menus. Depending on your handheld PDA device model, the menu is displayed by tapping the menu button on the silk screen area, tapping a menu button on the status bar, pressing a menu button, or tapping the title bar. Refer to your handheld PDA device user manual if you are unfamiliar with how to access menus on your handheld.



Most commands have menu shortcuts. The shortcuts are shown next to each command on the menus. Refer to your handheld PDA device user manual for instructions on how to invoke a menu shortcut. The full list of shortcuts is provided under the [reference topic](#) of this user manual.

## 1.4 Purchase a License

You can purchase a license for Quanto from the PalmGear website at <http://www.palmgear.com>.

After purchasing a license, you will receive a registration number by email (usually within the hour). Follow the instructions in the email to enter your registration number in the registration number dialog.



### Lost Registration Numbers

Visit the Natar web site [www.natar.com](http://www.natar.com) to request your registration number if you misplace it.

### HotSync User Name Change

If you change your HotSync User name you can continue to use the original registration code by entering the original HotSync User name in the User field.

## 1.5 Requirements & Limitations

### 1.5.1 Requirements

The Quanto handheld PDA device application has the following requirements:

- Approximately 2 MB of disk space for user manual and installation files.

#### For Palm OS handhelds

- Palm OS 5.0 or higher.
- 200 Kilobytes of memory for the application (activity database requires additional memory).
- External memory card required for Export features.
- The PalmOne Tungsten T3 handheld requires additional libraries supplied by PalmOne for full screen support.
- The Pie Chart requires services from the [MathLib](#) library.

#### 1.5.1.1 MathLib

The Pie Chart requires services from the MathLib library. Some handhelds, like the Tungsten E, do not have this library installed by default. The library can be downloaded from <http://www.radiks.net/~rhuebner/mathlib.zip>.

MathLib is not part of this application and you are not paying anything for its use; a copy is simply included with this product download for your convenience. The MathLib.PRC is included in the file MathLib.zip that is part of the Quanto download.

#### 1.5.2 Limitations

Quanto has the following limitations.

- Timing is done with a resolution in minutes.
- The number of activity records is limited to about 32 thousand.

### 1.6 Uninstalling

To uninstall the application from your handheld;

- Go to the application launcher screen on your handheld PDA device.
- Tap the Menu button and select Delete from the App menu.
- Select Quanto from the list of applications and tap Delete



**Note:** Uninstalling the application will also delete the activity database from your handheld PDA device.

### 1.7 What's New

#### Changes in version 1.1.1

- Added a date range preference for the statistics.
- Added Check for Update command to the Options menu.

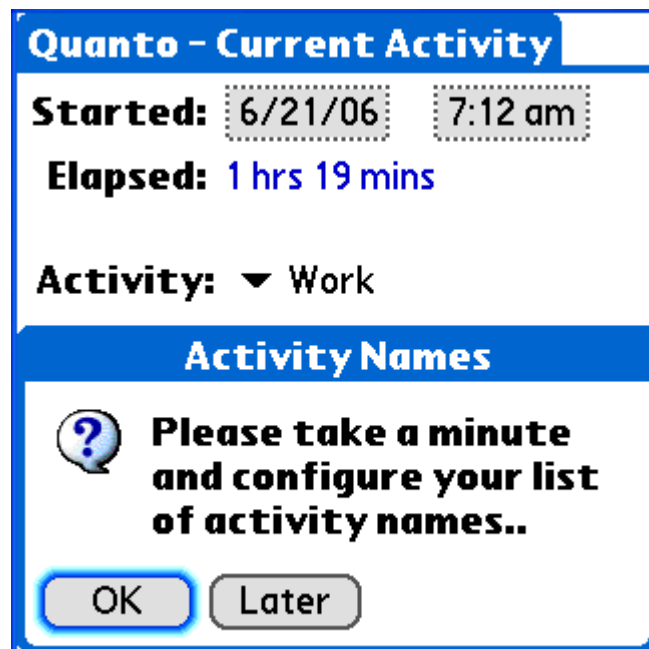
## 2 Configuration

This chapter contains topics on how to configure the application for use on your handheld PDA device.

### 2.1 First Time

The first time you run Quanto on the handheld PDA device it will suggest that you customize your [list of activities](#).

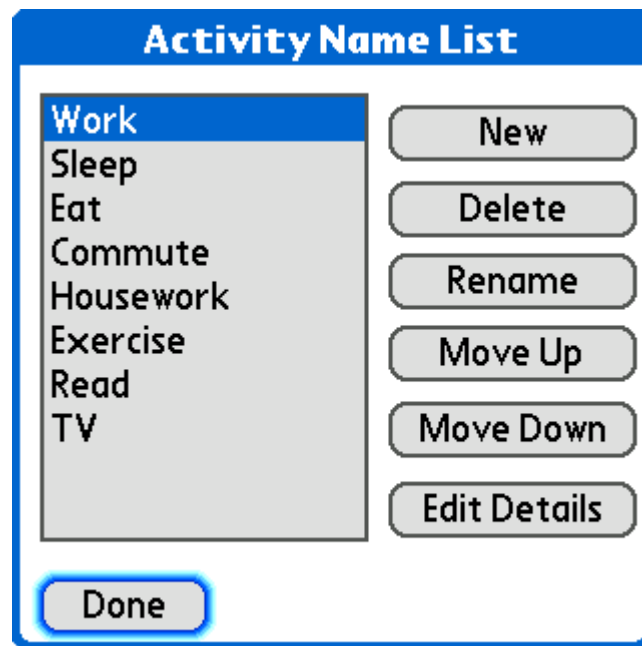
The list of activity names that you use will depend on what aspect of your life you are analysing. Quanto installs with a default set of activity and detail names. By customizing the lists you can get the most out of the application.



### 2.2 Activity Names

Using this dialog you can customize the list of activities that are available for use.

Place the more frequently used activities towards the top of the list to speed the start of new activities.

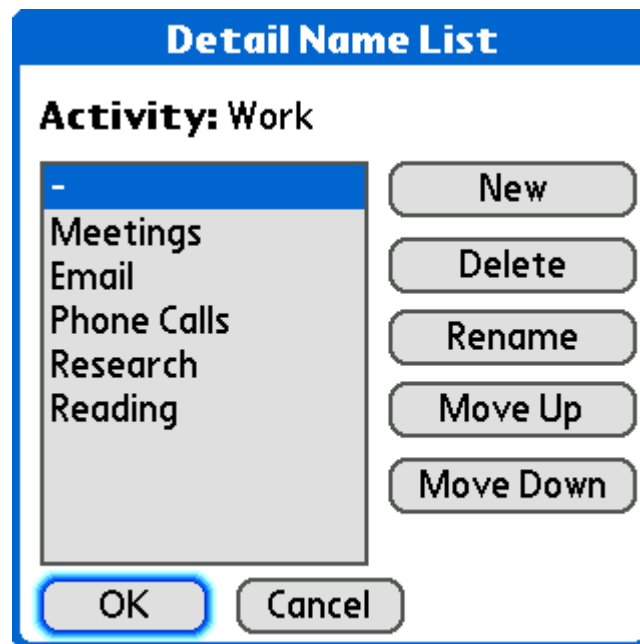


**Note:** Changes to the names in this list does not affect the activity history.

### 2.2.1 Detail Names

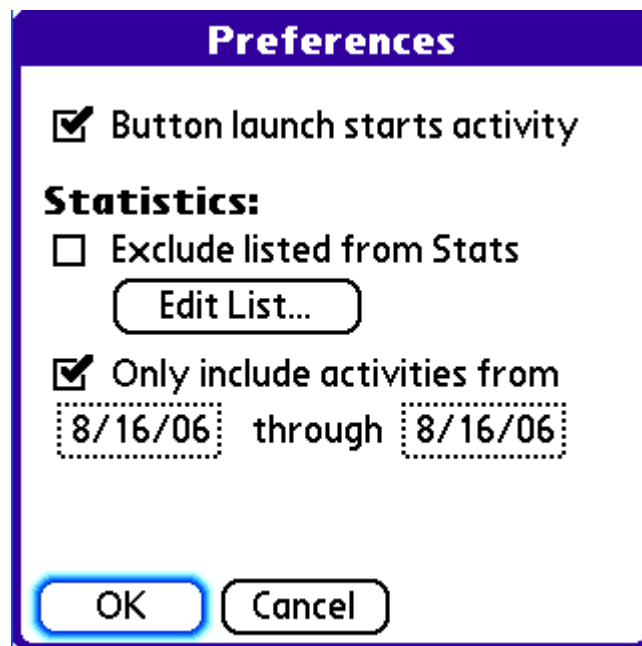
This dialog is used to customize the detail name list. There is a separate detail name list for each activity name.

Place the more frequently used names towards the top of the list to speed the start of new activities.



## 2.3 Application Preferences

This dialog is used to customize the application. Select the Preferences command from the Options menu to display this dialog.



### Button launch starts activity

When this is checked and Quanto is launched using a hard button a new

activity will be started. To use this option you must configure one of the hard buttons to launch Quanto. This is usually done through the Prefs application.

### Exclude listed from Stats

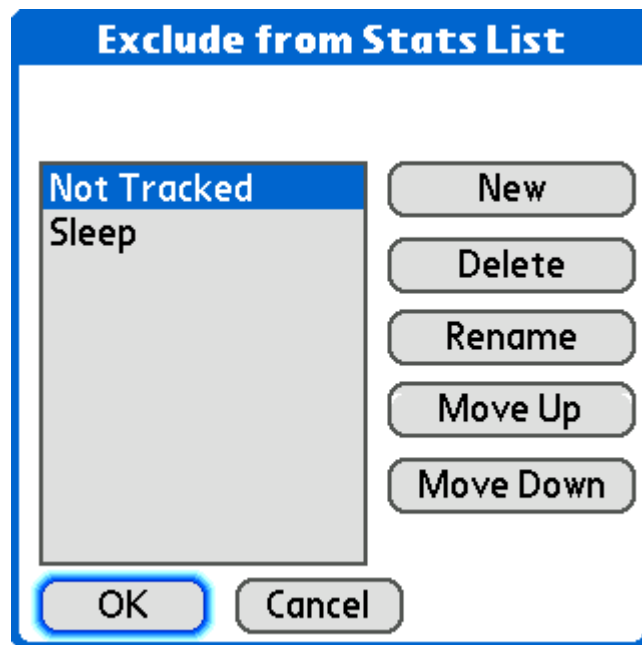
Use this option to exclude some activities from the statistics. For example, you may want a view of "What did I do during my waking hours". Tap on the [Edit List](#) button to enter the activities to exclude.

### Only include activities from

Use this option to limit the time frame used to create the statistics. To include activities from a single day the first and second dates should be the same.

#### 2.3.1 Exclude from Stats

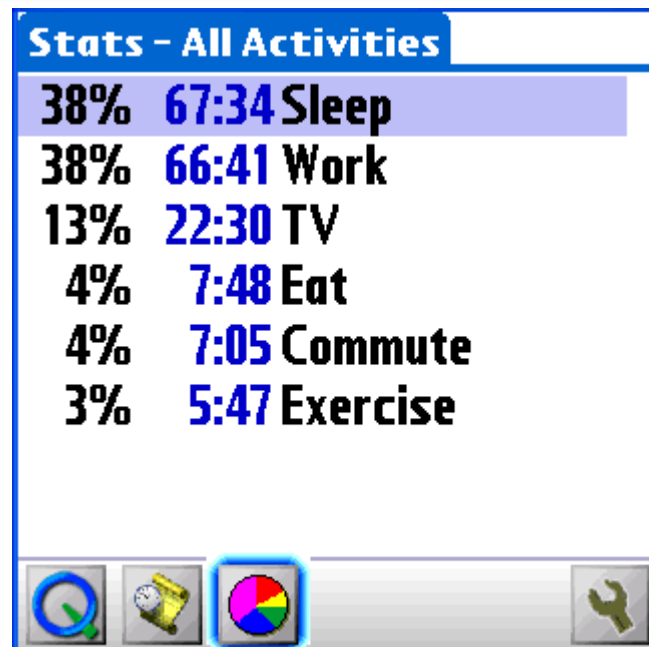
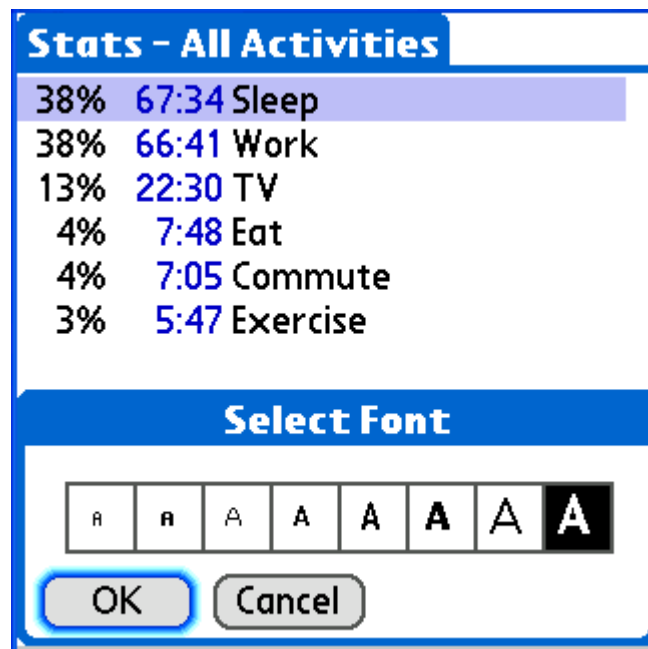
This dialog is used to specify activities that should be excluded from the statistics.



## 2.4 Font Size

On most handheld PDA devices, a smaller font size can be selected to increase the amount of information displayed on the screen. Use the Font command on the Options menu to change the font size.

The History and Stats view font sizes are independent.



**Note:** The number of fonts available is dependent on the handheld PDA device model. High resolution handhelds (320 x 320) usually have a selection of 8 fonts.

### 3 Main Views

This chapter contains topics that describe the 4 main views. Switching between the main views is done by either tapping one of the toolbar icons or selecting the view from the View menu.

The toolbar icons for switching views are:



Display the current activity view.



Display the history view.



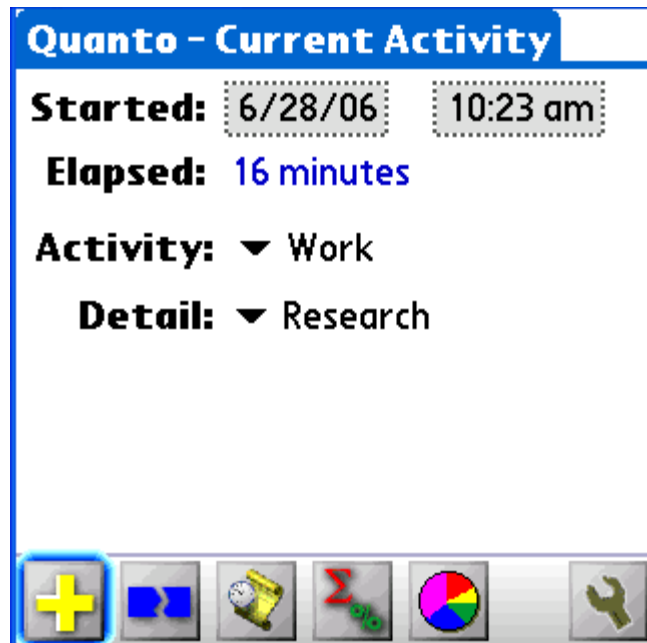
Display the statistics view.



Display the pie chart view.



#### 3.1 Current Activity View

This view displays the current activity.



Tap the Start New Activity toolbar button  to finish this activity and start a new one.



Quanto will make a guess at the activity name and detail based on past history.

Tap the Interrupt toolbar icon  to start the activity interrupt timer. Tap the Resume toolbar icon  when the interrupt is over.

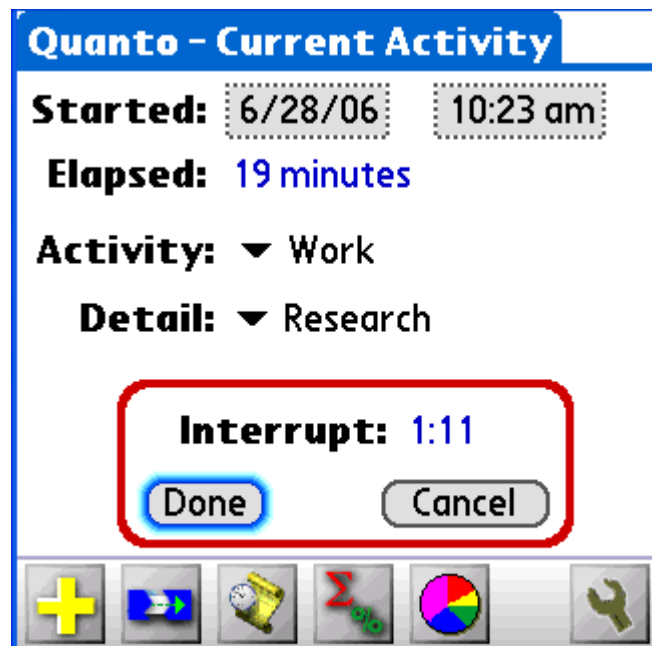
### 3.1.1 Activity Interrupt

It is not uncommon to have a longer duration activity interrupted. For example, a phone call might interrupt the review of a long document. Recording these interruptions may help in analysing your productivity.

One way to capture the interruption would be to start a new activity, and when the interruption was done, start another new activity resetting the original activity name and detail.

Quanto has a shortcut to accomplish this sequence of steps. Tap the Interrupt toolbar button  when an activity is interrupted. A timer will be displayed to show the length of the interrupt. The Interrupt button on the toolbar will also change to show that an interrupt is in progress. When the interrupt is done tap either the Done button or the Interrupt toolbar button . Quanto will perform three actions.

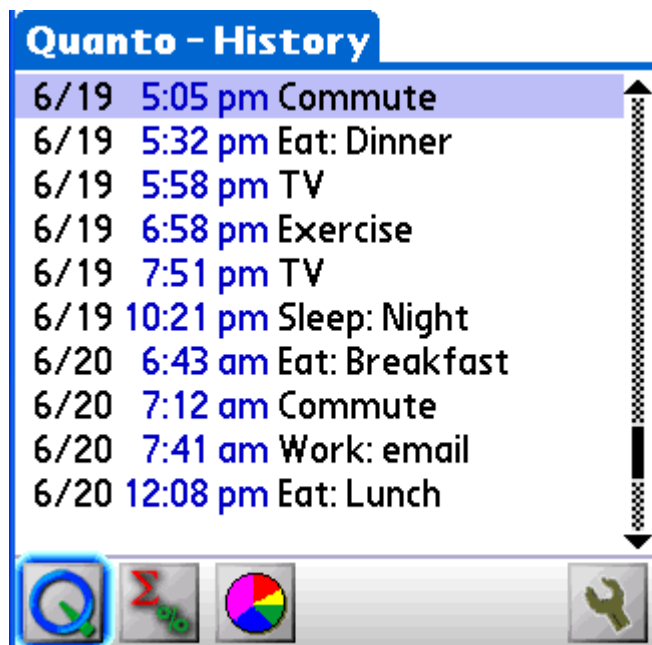
- The original interrupted activity will be given a finish time of when the interrupt started.
- An activity will be added for the interrupt.
- A new activity will be started with the same activity name and detail as the original interrupted activity.



If the interrupt was started by accident, or does not last long enough to matter, tap the Cancel button.

### 3.2 History View

This view is used to review the sequence of past activities. The start time and date of each activity is shown.

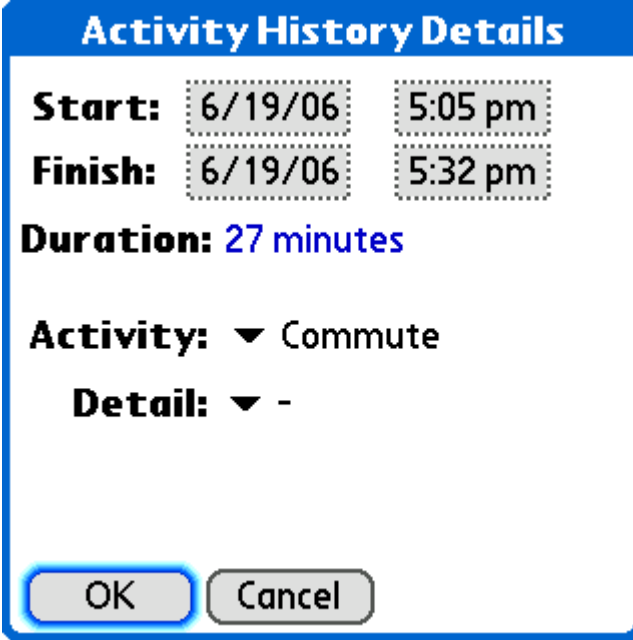


In addition to changing an activity using the [details dialog](#) you can delete or [split](#) an

activity.

### 3.2.1 Activity Details

This dialog shows the details of a single activity. You can change the activity and details selections. You can also change the start and finish times. When you change the start or finish times the activities that precede or follow the activity are updated so that there is no gap or overlap.



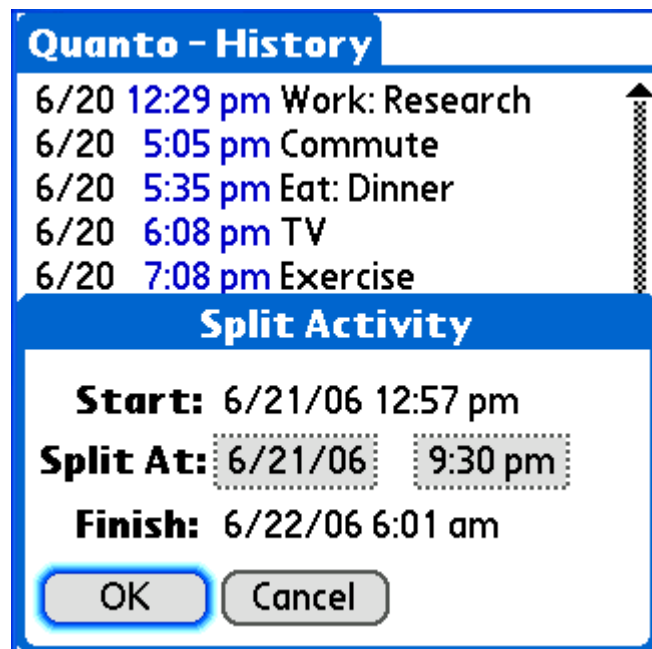
The dialog box is titled "Activity History Details" in a blue header bar. It contains the following fields:

- Start:** A date field showing "6/19/06" and a time field showing "5:05 pm".
- Finish:** A date field showing "6/19/06" and a time field showing "5:32 pm".
- Duration:** A text field showing "27 minutes" in blue.
- Activity:** A dropdown menu showing "Commute" with a downward arrow.
- Detail:** A dropdown menu showing "-" with a downward arrow.

At the bottom of the dialog are two buttons: "OK" and "Cancel".

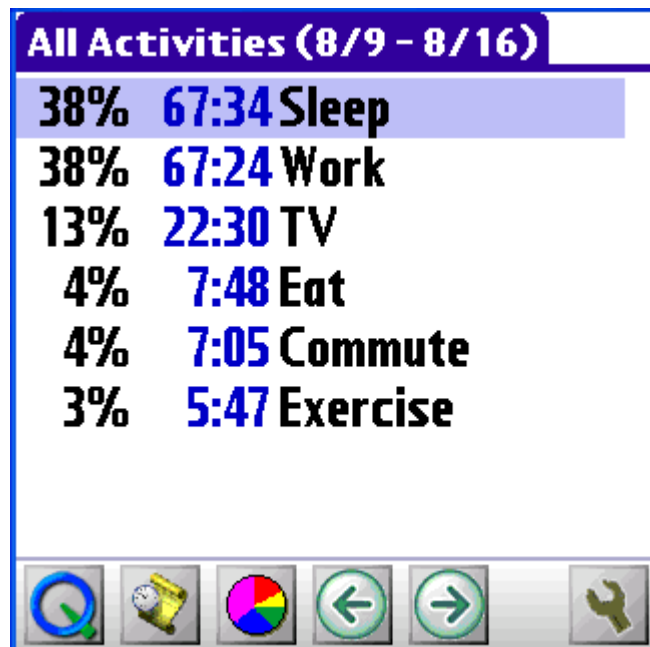
### 3.2.2 Split Activity

This dialog is used to split an activity into two activities. The split at time will be used to set the end time of the first activity and the start time of the second activity. After the activity has been split you can change the activity names to reflect what was done during each time period.



### 3.3 Statistics View

This view displays the total time in minutes and percentage of each activity.



Drill down to show the statistics for the details of a single activity by tapping on a selected activity name or using the select button.

Use the [application preference](#) setting to restrict the activities used to generate the

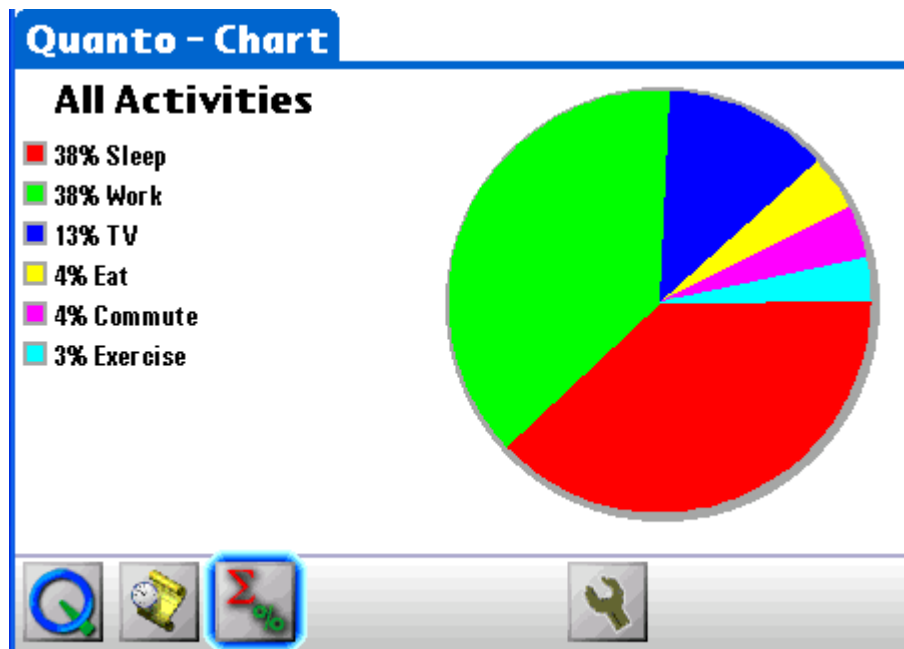
statistics to a single day or date range. The day or date range will be shown on the title and the next and previous buttons will be displayed on the toolbar. The next and previous buttons will move the date range by the length of the range.



**Note:** If you want a view that shows how you spent your 'waking hours' use the [preference](#) to exclude activities that you name.

### 3.4 Pie Chart View

This view displays the statistics in the form of a pie chart.



If you tap on a segment when viewing All Activities the view will drill down into the details of that activity. If you tap on the chart when viewing the details the view will again show All Activities.

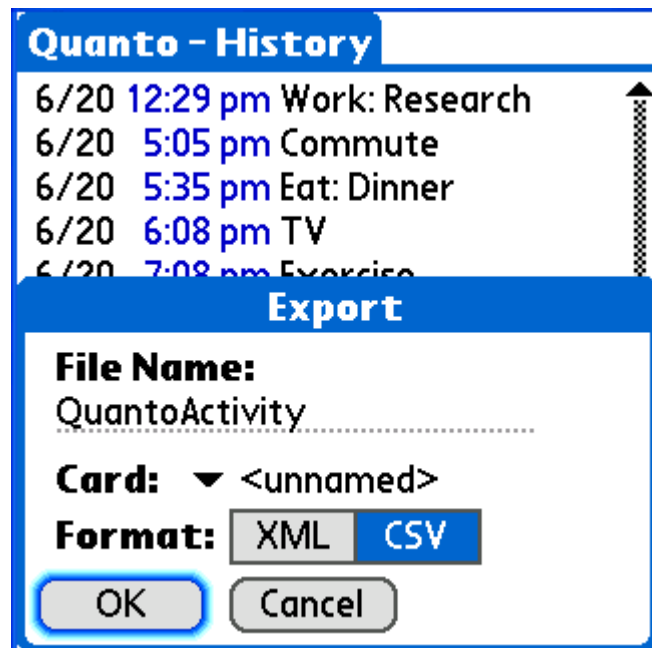
The pie chart will display the same date range of activities as shown on the Statistics View.

## 4 Other Dialogs

## 4.1 Export

This dialog is displayed when exporting the Quanto activity database.

Two export formats are supported; comma separated value (CSV) and XML. The export file is written to the directory "Palm/Programs/Natara/Quanto".

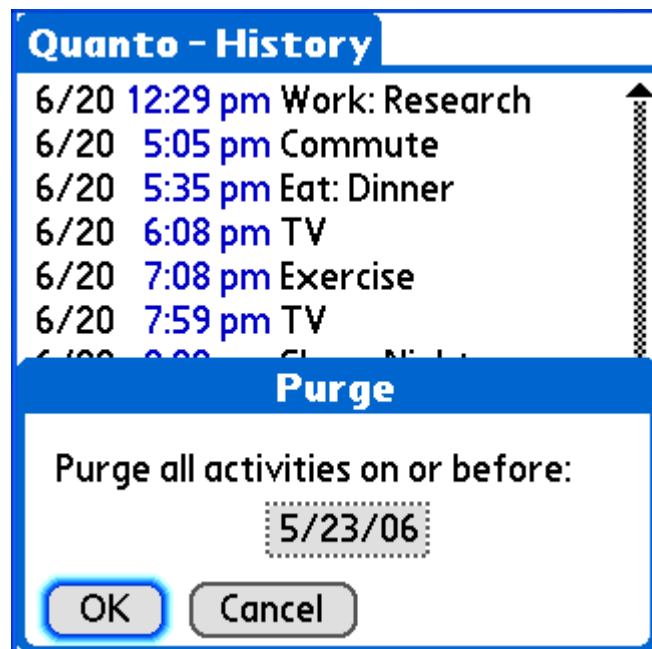


**Note:** The Export command requires an external storage card..

## 4.2 Purge

The Purge command is used to remove old activity records from the database. When OK is tapped all activity records that finish on or before the date will be permanently deleted from the database.

You may want to [export](#) the old activity information to the storage card before deleting it.



## 5 How Do I ... ?

This chapter contains step-by-step instructions for a number of common tasks.

### 5.1 Delete old records

The [Purge](#) command can be used to delete old records.



**Note:** Purged activity history records can not be recovered.

### 5.2 Backup the activity database

The activity database is named "QuantoDB\_NQto". This database will be backed up by the HotSync Manager System conduit to your backup folder under your HotSync Manager user directory when you synchronize the handheld PDA device. For extra protection, the backup folder should be part of your desktop backup.

Changes to the list of activity and detail names are stored in the database named "QuantoActivityDB\_NQto".

## 6 Reference

### 6.1 Toolbar Icons



Display the [current activity](#) view.



Display the [history](#) view.



Display the [statistics](#) view.



Display the [pie chart](#) view.



View and change the application preferences.



Start a new activity.



Interrupt the current activity.



Resume the interrupted current activity.



Move the time period for the statistics to the previous period.



Move the time period for the statistics to the next period.

### 6.2 Menu Shortcuts

The menu shortcuts for Quanto are as follows.

- A View and edit the activity names list.
- B Go to the bottom of the view.

- C Display the current activity view.
- D Delete the selected activity history record.
- E Display the details of the selected activity history record.
- F Select a font.
- G Purge old activity history records.
- H Display the history view.
- L Split the selected activity history into two activities.
- N Start a new activity.
- O Go to the top of the view.
- P Display the pie chart view.
- R View and edit the application preferences.
- S Display the statistics view.
- U Interrupt the current activity.
- X Export the information to the storage card.
- Y Cancel the activity interrupt.

## 6.3 Contacting Natara Software

**Sales questions:** [sales@natara.com](mailto:sales@natara.com)

**Support for registered customers:** [support@natara.com](mailto:support@natara.com)

**Natara web site:** <http://www.natara.com>

**Forums:** <http://www.natara.com/forums> (this is a great place to keep in touch with Natara and other customers!)

**Phone:** (630) 870-1158

**Skype:** natarasupport

**Mail:** 909 E. Ogden Ave.  
Suite C  
Naperville, IL 60563-2885  
USA

**Note:** When reporting problems, be sure to be as specific as possible.

**Include:**

- Which product you are having trouble with.
- What is the make and model of the phone you are using.
- Palm OS version (3.5, 5.0, etc.) of your handheld.
- What desktop operating system ( Windows 2000, XP, Windows ME, etc.)
- Steps to reproduce the problem.

## 6.4 Software License Agreement

### -IMPORTANT-

Read This Carefully Before Installing The Software

**THIS IS A LEGAL AGREEMENT BETWEEN YOU AND NATARA SOFTWARE, INC. BEFORE CONTINUING WITH THE INSTALLATION OF THE PROGRAM, YOU MUST READ, ACKNOWLEDGE AND ACCEPT THE TERMS AND CONDITIONS OF THE SOFTWARE LICENSE AGREEMENT WHICH FOLLOWS. IF YOU DO NOT ACCEPT THE TERMS AND CONDITIONS OF THE SOFTWARE LICENSE, YOU MAY RETURN THE MEDIA PACKAGE AND ALL ACCOMPANYING ITEMS (INCLUDING WRITTEN MATERIALS AND BINDERS OR OTHER CONTAINERS), TO THE PLACE YOU OBTAINED THEM FOR A FULL REFUND; OR YOU MAY WRITE, NATARA SOFTWARE, INC., 909 E. OGDEN AVE. SUITE C, NAPERVILLE, IL 60563.**

### NATARA SOFTWARE LICENSE

**1. GRANT OF LICENSE.** Natará Software, Inc. ("Natará"), grants to you, the end user, a personal, nonexclusive license to use a single copy of this software program, including any updates, additional modules, or additional software provided by Natará in connection therewith (the "Software"), solely for your own use, and solely in accordance with the terms and conditions of this license agreement. You may copy the Software into the memory of any computer, solely as necessary to use the Software in accordance with this license agreement.

**2. INSTALLATION AND USE.** Natará Quanto is licensed to you in one of two potential configurations: (1) Single User License and (2) Evaluation License. You may install and use (in the manner provided) only those configuration(s) for which you have obtained a license. Licenses for Natará Quanto are individual named user licenses. No license may be shared, in any capacity, by more than one individual end user.

**(1) Single User License.** You may install and use a single copy of the Software on a single handheld device.

**(2) Evaluation License.** You may use one copy of the Software on a single handheld device, for a period not to exceed three (3) days. You are acquiring only the limited right to use a single copy of the Software for evaluation purposes. You are not acquiring any rights to the Software itself. After the three (3) day period you may purchase a license for continued use or remove the Software together with all copies, modifications and merged portions in any form.

**3. COPYRIGHT AND COPIES.** The Software (including any copy thereof), is owned by Natará or its suppliers and is protected by United States copyright and patent laws and international treaty provisions. The Software copy is licensed, not sold to you, and you are not an owner of any copy thereof. You may either (a) make one copy of the Software solely for

backup or archival purposes, or (b) transfer the Software to a single hard disk provided you keep the original solely for backup or archival purposes. You may not otherwise copy the Software except as expressly authorized by applicable law, and you may not copy the written materials accompanying the Software. Natara hereby reserves all rights not explicitly granted in this software license agreement.

**4. OTHER RESTRICTIONS.** You may not rent, lease or transfer the Software. You may not reverse engineer, decompile or disassemble the Software, except to the extent expressly authorized by applicable law.

**5. LIMITED WARRANTY AND REMEDY.** Natara warrants the physical media (e.g. diskette(s) or CD-ROM), if any, and the physical documentation, to be free of defects in materials and workmanship for a period of 90 days from the original purchase date. If Natara receives notification within this warranty period of any such defects and such notification is determined to be correct, Natara will, at its sole option and discretion, repair or replace the media or documentation, or provide you a full refund. The foregoing is your sole and exclusive remedy and states Natara's and its suppliers' entire liability arising out of this warranty. This limited warranty is void if the damage or defect has resulted from accident, abuse or misapplication.

**6. NO OTHER WARRANTIES. THE LIMITED WARRANTY ABOVE IS EXCLUSIVE AND IN LIEU OF ALL OTHER CONDITIONS AND WARRANTIES FOR THE SOFTWARE AND DOCUMENTATION. NATARA AND ITS SUPPLIERS MAKE NO OTHER CONDITIONS OR WARRANTIES, EXPRESS, IMPLIED, STATUTORY OR OTHERWISE, AND EXPRESSLY DISCLAIM ALL OTHER CONDITIONS AND WARRANTIES, INCLUDING BUT NOT LIMITED TO IMPLIED CONDITIONS OR WARRANTIES OF MERCHANTABILITY, FITNESS FOR A PARTICULAR PURPOSE, AND NONINFRINGEMENT FOR THE SOFTWARE AND DOCUMENTATION, TO THE FULLEST EXTENT PERMITTED BY APPLICABLE LAW.**

**7. LIMITED LIABILITY. TO THE MAXIMUM EXTENT PERMITTED BY APPLICABLE LAW, IN NO EVENT AND UNDER NO LEGAL THEORY SHALL NATARA OR ITS SUPPLIERS BE LIABLE TO YOU FOR ANY COSTS OF SUBSTITUTE PRODUCTS, OR FOR ANY CONSEQUENTIAL, SPECIAL, INCIDENTAL, PUNITIVE OR INDIRECT DAMAGES OF ANY KIND ARISING OUT OF THE LICENSE OF, USE OF, OR INABILITY TO USE ANY NATARA SOFTWARE OR DOCUMENTATION, EVEN IF NATARA HAS BEEN ADVISED OF THE POSSIBILITY OF SUCH DAMAGES. IN NO EVENT SHALL NATARA'S OR ITS SUPPLIERS' LIABILITY EXCEED THE LICENSE FEE PAID BY YOU. THIS LIMITATION OF LIABILITY AND RISKS IS REFLECTED IN THE PRICE OF THE SOFTWARE LICENSE.**

**8. TERM.** This license is effective until terminated. You may terminate it at any time by destroying the Software together with all copies, modifications and merged portions in any form. It will also terminate automatically upon your failure to comply with any term or

condition of this Agreement. In the event of such termination, you agree to promptly destroy the Software together with all copies, modifications and merged portions in any form.

**9. MISCELLANEOUS.** This is the entire Agreement between you and Natara, and supersedes any prior agreement, whether written or oral, relating to the subject matter of this Agreement. This Agreement is governed by the laws of the State of Illinois, U.S.A., without reference to conflict of laws principles. All disputes arising out of this Agreement shall be litigated or otherwise resolved exclusively in the state of Illinois. If any provision of this Agreement is ruled invalid, such invalidity shall not affect the validity of the remaining portions of this Agreement.

# Index

## - A -

archive 21

## - B -

Backup 23  
buy 6

## - C -

categorize 9  
chart 19  
configuration 9  
CSV 21  
current 14

## - D -

delete 16, 21, 23  
detail 10  
details 17

## - E -

edit 17  
exclude 11, 12  
export 21

## - F -

Font 12

## - H -

history 16  
HotSync User Name 6

## - I -

Icons 24

insert 16  
installation 3  
interrupt 15  
introduction 3

## - L -

launch 11  
license agreement 26  
limitations 8

## - M -

mathlib 8  
menu 6  
menu shortcuts 24

## - N -

names 9  
New 8

## - P -

PDA 3  
percentage 18  
pie chart 19  
PRC 3  
Preferences 11  
purchase 6  
purge 21, 23

## - R -

registration 6  
remove 8, 23  
requirements 7

## - S -

setup 3, 9  
shortcuts 24  
skip 11  
sleep 11  
split 17  
stats 18

storage card 21  
subactivity 10  
support 25

## - T -

toolbar 6, 24  
totals 18  
trial 6

## - U -

uninstall 8

## - X -

XML 21