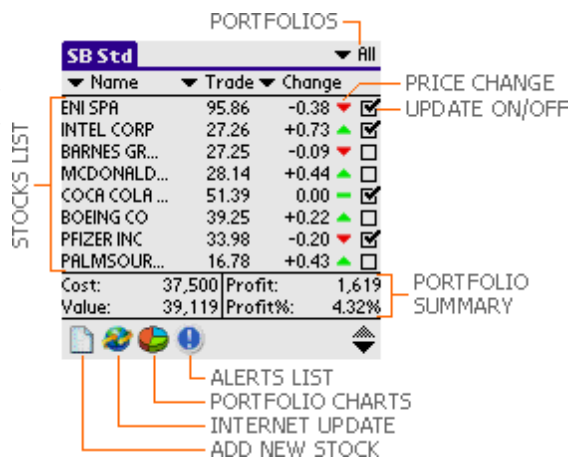




MAIN SCREEN

On the main screen you can view all your stocks from the currently selected portfolio. The list is composed of 5 columns and you are able to change the contents of 1st, 2nd and 3rd column by tapping its header. The 4th column always shows the price change, while the 5th one shows if the stock should be update when the option "Update selected stocks" is used. In order to view or edit the stock details (quotation, charts, alerts etc.) just tap the desired stock.



STOCK DETAILS

In the stock details window you can view and edit information related to the selected stock. In order to make the navigation easier this window is divided into five tabs: Quotation, My Shares, Stock Calculator, Charts, Alerts. To switch between these tabs use a drop-down list situated in a right-top corner of each tab.

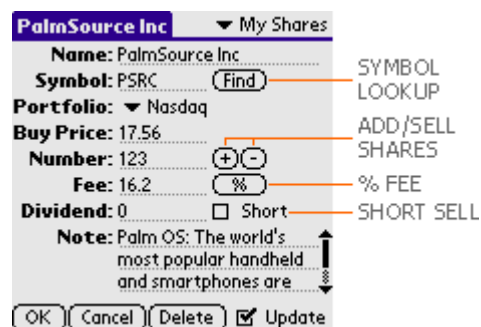
STOCK DETAILS: QUOTATION

The Quotation tab provides you obviously with the quote information downloaded from the Internet during last stocks update.



STOCK DETAILS: MY SHARES

In the My Shares tab you have to enter the stock's symbol, which is for the application the most important parameter. If you don't know it you can use StockBroker's built-in Symbol Lookup function ("Find" button). Moreover you can optionally enter some details about shares that you own. While adding or selling shares it is recommended to use + and - buttons so the application will automatically calculate the Buy Price, Number and Fee values. If your broker charges a



percentage fee then you should tap the button labelled with % symbol and choose the correct percentage value. You can easily specify if your purchase is a short by checking the "Short" checkbox (Profit and Profit % will be then correctly calculated). The update checkbox indicates if the stock should be updated when the "Update selected stocks" option is used. Note that the Dividend field is an absolute dividend amount that you have received for this stock and it will be added to the profit calculations.

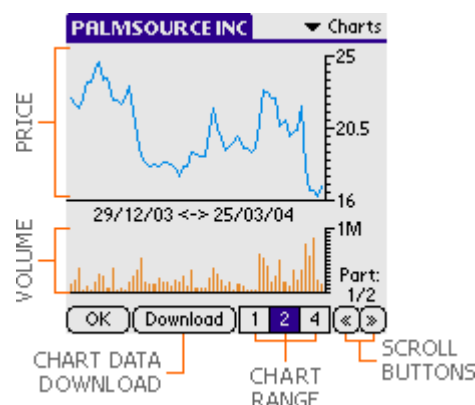
STOCK DETAILS: STOCK CALCULATOR

The Stock Calculator shows statistics about shares that you own.



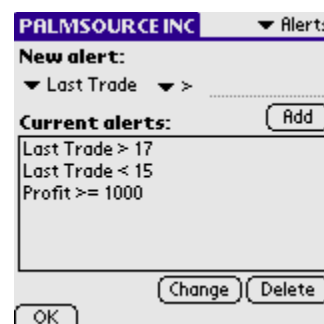
STOCK DETAILS: CHARTS

If you would like to view the stock price/volume chart you have to firstly download the chart data from the time period you are interested in. It is possible to view chart in 1, 2 or 4 months ranges. If there is not enough room on screen for data downloaded by you it will be divided into few parts, you can switch between them with the scroll buttons. Tap somewhere on the chart to view date/price/low/high/volume values from the chosen day.



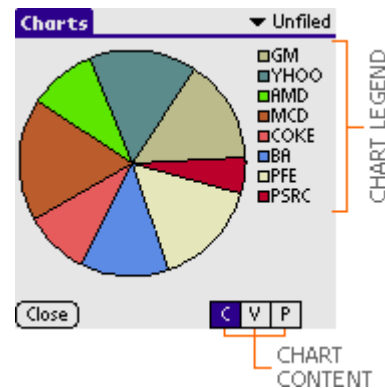
STOCK DETAILS: ALERTS

In the Alerts tab you can define alerts based on stock's last trade, change, profit etc. If one of the defined alerts becomes active, application will inform you about it by playing an alarm system sound (you can enable or disable this in StockBroker's preferences) and changing a colour of the Alerts List button on the main screen.



PORTFOLIO CHARTS

In Portfolio Charts window you can view the pie chart for the currently selected portfolio. You can change the type of displayed data with a push buttons situated in right-bottom corner of the screen (C=Cost, V=Value, P=Profit).



CSV FORMAT

You can export your portfolio to a CSV file located on a memory card (/PALM/Launcher/SB.csv). Below you will find a CSV specification for Stock Broker Pro:

```
Stock Symbol (string);Stock Name (string);Category (number);Buy Price
(number);Volume (number);Fee (number);Short (True/False);Dividend
(number);Update (True/False);Note (string);Chart Data Download
(True/False)
```

Example of 3 stocks (note that 0 is the Unfiled category and that Chart Data Download field is only for the compatibility with Stock Boker Pro):

```
PALM;PALM INC;2;14.7;21;10.76;Ture;0;True;The best PDA devices;False
MSFT;MICROSOFT CP;2;23.72;100;5.9;False;0;True;Software company;True
YRCW;YRC WORLDWIDE;0;45.44;8;5;False;0;True;My notes...;False
```