

1. Basic instructions

Switch5 is a PalmOS 5 preference panel which provides a simple way to switch between recently used applications. Switch5 has two basic operations: (1) switch immediately to the previous application, or (2) select an application from a list of recently launched applications. The screen capture below shows the list of recently launched applications (To Do List, Memo Pad, and Date Book).



Configuration menus: (1) Switch5 Preferences: changes the method (silkscreen, hard key, command toolbar) of activation, (2) Display and Font: changes the display preferences of the list of recent applications, (3) Favorites: permanently add applications to the list of recent applications, (4) Ignore: permanently remove applications from the list of recent applications, and (5) History: edit the list of recent applications.

Limitations. (1) Use at your own risk. It works for me but your mileage may vary :) (2) The list of the most recently used applications is not backed up during HotSync and will be cleared by a reset. (3) Switch5 will need to be manually launched (one time only) if the application was copied from an expansion card. (4) Switch5 only works for PalmOS 5. (5) Switch5 does not support applications on external memory cards. Use TealAlias or PowerRun to support applications on external memory cards. (6) Tungsten T3 is only supported in portrait mode.

Warnings. This software comes without warranty and support.

2. Minimum requirements

Switch5 requires PalmOS 5.x. Switch5 will not work on devices with PalmOS 4.x or below because Switch5 requires certain notifications that was introduced in PalmOS 5.x. Switch5 will not work with PalmOS 6.x or higher (PalmOS Cobalt) because these notifications are not supported in PalmOS Cobalt.

3. Installation

Switch5 can be installed through HotSync, beaming, or copying from an external memory card. Switch5 cannot however be executed from an external memory card.

4. Launching Switch5

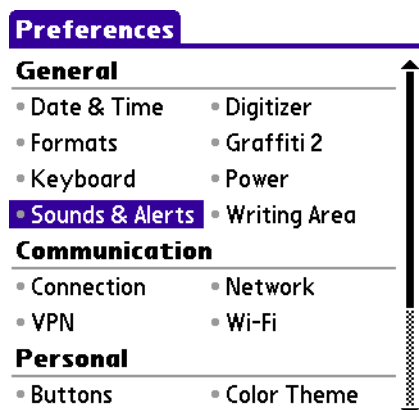
4.1 Install Switch5 if it has not already been installed on your device.

4.2 Go the Launcher or Home/Application screen.



4.3 Select the Prefs application.

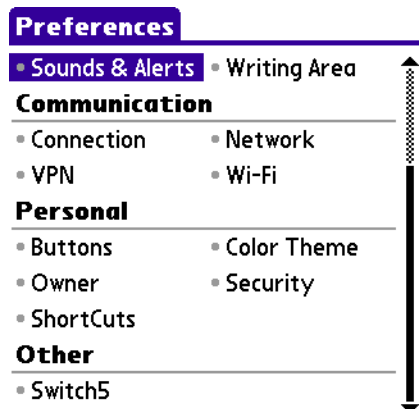
On palmOne devices, the Prefs application displays a list of installed preference panels (Switch5 is near the bottom).



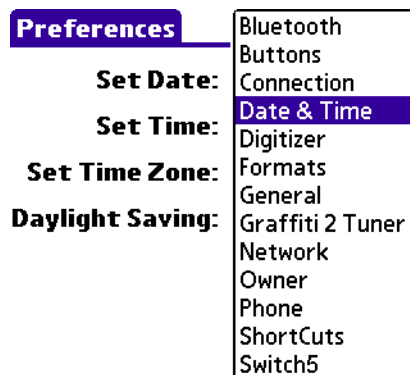
On other devices, the Prefs application launches the last used preference panel.

4.4 Select the Switch5 preference panel.

On palmOne devices, select Switch5 from the list of installed preference panels in the Other category.

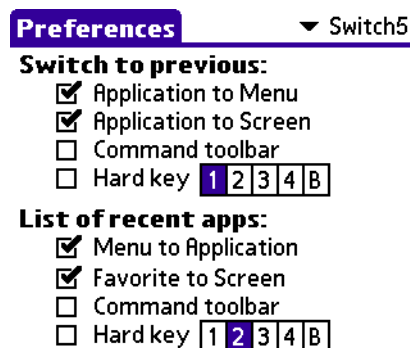


On other devices, select Switch5 from the pulldown list of installed preference panels located in the upper right hand corner.



5. Configuring Switch5

5.1 Switch5 Preferences



5.1.1 Switch to previous

The following four boxes select the different activation methods to switch to the previous application.

5.1.1.1 Application to Menu

Enables a pen stroke from the Applications circle to the Menu circle on the silkscreen area to cause a switch to the previous application. Not used on devices without a silkscreen area like the Treo 600/650. In the screen capture below, the

red arrow is the pen stroke from the Applications circle to the Menu circle on the silkscreen area.



5.1.1.2 Application to Screen

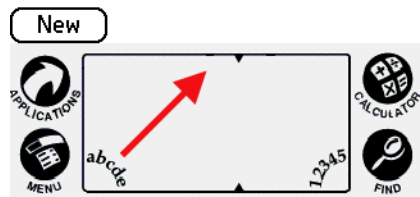
Enables a pen stroke from the Applications circle to the application screen area to cause a switch to the previous application. Not used on devices without a silkscreen area like the Treo 600/650. In the screen capture below, the red arrow is the pen stroke from the Applications circle to the application screen area.



5.1.1.3 Command toolbar

Adds a left arrow icon to the command toolbar. Tapping on this icon will cause a switch to the previous application. The command toolbar itself can be displayed by

doing an upward forward slash Graffiti stroke. In the screen capture below, the red arrow is the pen stroke to display the command toolbar.



Devices without Graffiti (like the Treo 600/650) should install Graffiti Anywhere. In the screen capture below, the left arrow icon is the leftmost icon on the command toolbar.



5.1.1.4 Hard key

Enables a press on a hard key to cause a switch to the previous application. The layout of the hard keys are device dependent. The 'b' key for the 'back' button on Sony Clie devices.

5.1.2 List of recent apps

The following four boxes select the different activation methods to bring up the list of recent applications.

5.1.2.1 Menu to Application

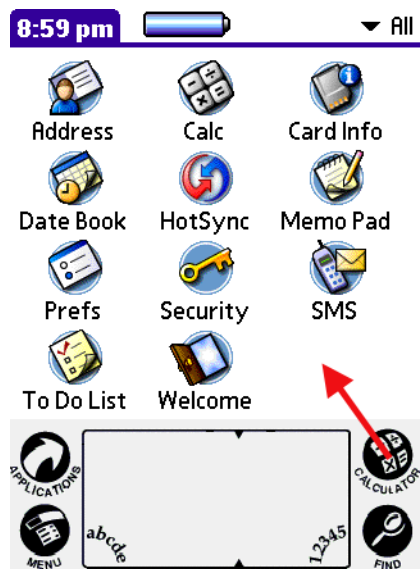
Enables a pen stroke from the Menu circle to the Applications circle on the silkscreen area to cause the list of recent applications to be displayed. Not used on devices without a silkscreen area like the Treo 600/650. In the screen capture

below, the red arrow is the pen stroke from the Menu circle to the Applications circle on the silkscreen area.



5.1.2.2 Favorite to Screen

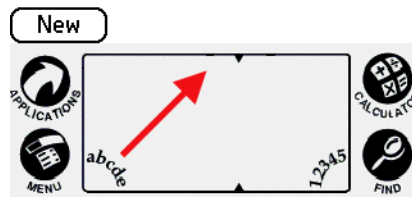
Enables a pen stroke from the Favorite/Calc circle to the application screen area to cause the list of recent applications to be displayed. Not used on devices without a silkscreen area like the Treo 600/650. In the screen capture below, the red arrow is the pen stroke from the Favorite/Calc circle to the application screen area.



5.1.2.3 Command toolbar

Adds a left and up arrow icon to the command toolbar. Tapping on this icon will cause the list of recent applications to be displayed. The command toolbar itself

can be displayed by doing an upward forward slash Graffiti stroke. In the screen capture below, the red arrow is the pen stroke to display the command toolbar.



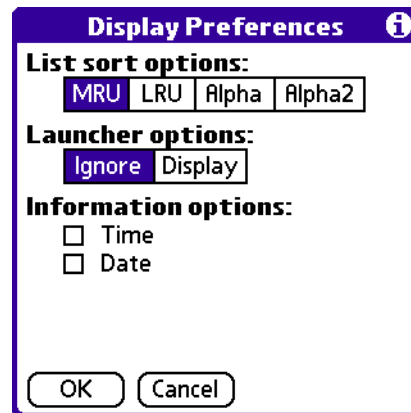
Devices without Graffiti (like the Treo 600/650) should install Graffiti Anywhere. In the screen capture below, the left and up arrow icon is the middle icon on the command toolbar.



5.1.2.4 Hard key

Enables a press on a hard key to cause the list of recent applications to be displayed. The layout of the hard keys are device dependent. The 'b' key for the 'back' button on Sony Clie devices.

5.2 Display Preferences



Display Preferences are found in the Options->Display menu.

5.2.1 List sort options

Control how the list of recent applications will be displayed.

5.2.1.1 MRU

Most recently used. Most recently used applications are at the top of the list.

5.2.1.2 LRU

Least recently used. Least recently used applications are at the top of the list.

5.2.1.3 Alpha

Alphabetical and case sensitive. Applications are sorted alphabetically by application name in a case sensitive manner (upper case before lower case). Applications like pTunes (Pocket Tunes) will be at the bottom of the list as this sort is case sensitive.

5.2.1.4 Alpha2

Alphabetical and case insensitive. Applications are sorted alphabetically by application name in a case insensitive manner.

5.2.2 Launcher options

Controls if the Launcher will be displayed or ignored in the list of recent applications.

5.2.2.1 Ignore

The Launcher will be ignored. This is useful when switching to the previous application. Usually the previous application is the Launcher but typically the application you want to switch to is the one previous to the Launcher.

5.2.2.2 Display

The Launcher will be displayed. This is useful for devices without a silkscreen area where it may be difficult to get back to the Launcher.

5.2.3 Information options

Controls if the time and date should be displayed in the lower right hand corner when the list of recent applications is displayed. Useful on devices without a status bar. The screen capture below shows the time and date information option enabled.



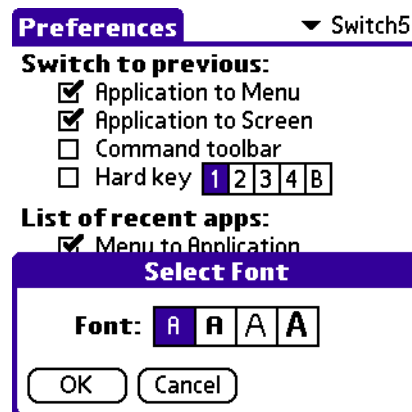
5.2.3.1 Time

Enable the display of the current time. Uses the Format preferences to get the format of the time. Useful for devices without a status bar to quickly display the time.

5.2.3.2 Date

Enables the display of the current date. Uses the Format preferences to get the format of the date. Useful for devices without a status bar to quickly display the date.

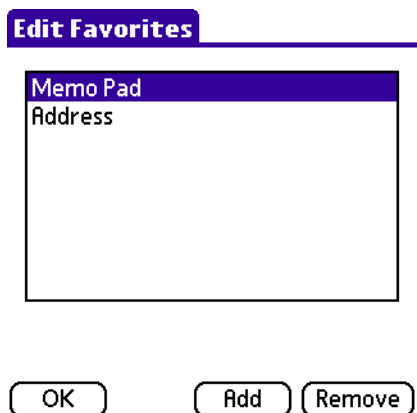
5.3 Select Font



Select Font is found in the Options->Font menu.

Selects a font in which the list of recent application should be displayed. Some devices may have more fonts.

5.4 Edit Favorites



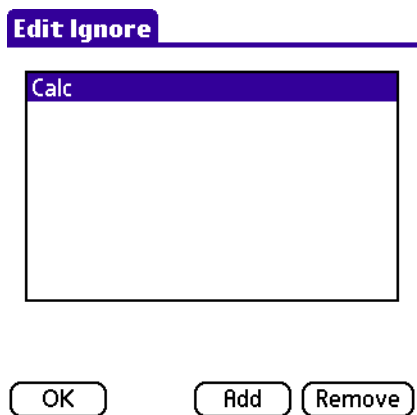
Edit Favorites is found in the Edit->Favorites menu.

Allows up to eight applications to be permanently added to the list of recent applications. In the screen above, the Memo Pad and Address applications will always appear in the list of recent applications.

Select 'Add' to add an application to the favorites list and 'Remove' to remove the highlighted application from the favorites list.

Deleting or replacing an application will remove it from the favorites list.

5.5 Edit Ignore



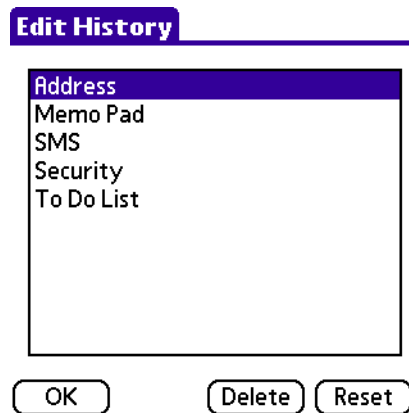
Edit Ignore is found in the Edit->Ignore menu.

Allows up to eight applications to be permanently ignored by the list of recent applications. In the screen above, the Calc application will always be ignored.

Select 'Add' to add an application to the ignore list and 'Remove' to remove the highlighted application from the ignore list.

Deleting or replacing an application will remove it from the ignore list.

5.6 Edit History



Edit History is found in the Edit->History menu.

The last twenty applications are displayed in most recently used order. In the screen above, the Address, Memo Pad, SMS, Security, and To Do List applications were recently used.

Select 'Delete' to remove the highlighted application from the history list and 'Reset' to reset the history list to the favorites list.

Deleting or replacing an application will remove it from the history list.

5.7 About Switch5



About Switch5 is found in the Options->About Switch5 menu.

6. FAQ

6.1 Question: I've installed Switch5 but I don't see it in the Launcher.

Answer: It is not visible in the Launcher since Switch5 is a preference panel. Launch the Prefs application and select the Switch5 panel.

6.2 Question: I have a Treo 600/650. How do I use Switch5 if my device does not have a silkscreen area?

Answer: For your Treo 600/650 you can either use a hard key (if you want to dedicate a hard key for Switch5) or the command tool bar. To use the command tool bar you'll need to first install Graffiti Anywhere or similar application that will open up the command toolbar.

6.3 Question: What's the command toolbar?

Answer: The command toolbar is the set of icons at the bottom of the screen. Typically the command toolbar is opened by doing an upward forward slash stroke in the Graffiti area. If your device does not have a Graffiti area (like the Treo 600/650), you'll need to install Graffiti Anywhere (or similar application).

To use Switch5 with the command toolbar, enable the command toolbar option in Switch preference panel (it is disabled by default). Then two additional icons will appear in the command toolbar. A 'left arrow' icon to switch to the previous application and a 'left and up arrow' icon to display the list of recent applications. The screen below shows these icons in the Memo Pad application (the lock icon is from the Memo Pad application).



7. Revision History

7.1 Version 4.5 (3/8/2005)

- (1) Added support for the Treo 5-way nav keys to scroll through the list of recent applications. (2) Added pdf documentation.

7.2 Version 4.4 (7/9/2004)

- (1) The list of recent applications can now be displayed in case insensitive sort order. Previously the sorting was always case sensitive. This is for applications like Pocket Tunes or Power One whose application names are not capitalized. (2) Preference panels can now be added to the favorite and ignore lists. Previously only applications could be added. (3) Switching to the previous application from a preference panel now works for non-palmOne devices. Previously this didn't work because of the way the prefs application launches its panels.

7.3 Version 4.3 (5/28/2004)

- (1) Added support for the Sony "back" button. Previously only supported the four hard keys. This will not work with all applications since applications can explicitly enable the back button. (2) Added support for the Sony jog dial to scroll through the list of recent applications.

7.4 Version 4.2 (4/11/2003)

- (1) Changed from an application to a preference panel. Switch5 will not be visible in the launcher. Use the preferences application to set any options. (2) Added "ignore" option to permanently remove applications (up to 8) from the recent application list. (3) Added custom command toolbar buttons. Previously was using the system info buttons.

7.5 Version 4.1 (3/9/2004)

(1) Added optional display of time and date on bottom left corner. (2) Adding an application to favorites list will now also adds the application to the history list. (3) Changed the list of recent application timeout to be reset when the highlighted application changes.

7.6 Version 4.0 (11/5/2003)

(1) Added favorites list to permanently add applications (up to eight) to the list of recent applications. (2) Added Tungsten T3 silkscreen activation (portrait only). Uses the traditional button locations regardless of any remapping of the virtual silkscreen buttons. (3) Removed the restriction of only displaying the list of recent applications when the active form is not a menu, popup list, or dialog box. Now the list of recent applications may be displayed at almost any time. (4) Added selectable hard key activation. Note: this option may interfere may with third party extensions that enhance hard key selections. (5) List of recent applications can now be navigated with the page up/page down key events. This allows one handed operation. (6) Added edit history list to erase a single item from the list of recent applications. This replaces the previous clear all history option. (7) Added display preference to optionally exclude the launcher. Previously the launcher was always excluded. This is for Tungsten T users who don't like to open the slider to get to the launcher. (8) The list of recent applications is now initialized to the favorites list at soft reset. (9) Added reset button in the edit history list to reinitialize the list of recent applications to the favorites list. (10) Get the launcher creator code from system preferences instead of using hard coded values for the various launchers. (11) Fixed a memory leak when the display size of the list of recent applications was greater than the actual size of the screen. (12) Fixed a bug where Switch5 could be repeatedly called which would eventually cause a system crash. (13) Fixed a bug where the first stroke or tap after an error dialog was ignored. (14) Removed duplicate application names from the list of recent applications. This is to support some third party expansion card shortcuts that may leave the application in RAM. (15) UI and help description changes.

7.7 Version 3.0 (10/3/2003)

(1) Added command toolbar support (using the system info icons) for switch to previous and display the recent application list. This is to support devices without a silkscreen area. (2) Highlight the currently selected item in the recent application list. This makes picking from the recent application list a lot easier. (3) Use the icon application names (when available) instead of the actual database names in the recent application list. This helps when using non-English applications. (4) Added the option to pick the recent application list font. The default font may be too thin/small on some devices. (5) Added support for TealScript. This will hopefully fix the Fatal Alerts a few users are also experiencing with different third party extensions. (6) Enlarged the silkscreen button coordinates for Tungsten T owners who don't like to open the slider. (7) Fixed a (minor) bug where the Graffiti shift state was not getting properly restored. (8) Use the proper line height (from the system) in the recent application list. (9) Removed ZLauncher from the recent application list.

7.8 Version 2.0 (9/2/2003)

(1) Recent application list no longer erases the entire screen but is drawn on top of the existing screen. (2) Added preferences form with checkboxes to disable each stroke and an option to sort the recent application list alphabetically or by MRU (most recently used) or LRU (least recently used). (3) Added clear history to the options menu. (4) Added support for 160x240 and 320x480 displays and different silkscreen layouts. (5) Enabled hard buttons to bypass the recent application

list. (6) Removed creator codes from database that embed them as the last four characters of the database name. (7) Changed the recent applications list to save and restore the old window bits in an offscreen window instead of redrawing the entire screen. This gets rid of the screen blinking and helps some applications that do not properly redraw their forms. (8) Added support for dual applications, menu and favorite silkscreen areas. This is for devices that have multiple silkscreen buttons while using soft Graffiti.

7.9 Version 1.0 (7/1/2003)

Initial release.