



Palm™ BlueChat 2.0

Handbook

Copyright

© 2002 Palm, Inc. All rights reserved. Graffiti, HotSync, and Palm OS are registered trademarks of Palm, Inc. The HotSync logo, Palm, and the Palm logo are trademarks of Palm, Inc. Palm, Inc. uses the Bluetooth trademarks under express license from Bluetooth SIG, Inc., U.S.A. All other brands are trademarks or registered trademarks of their respective owners.

Disclaimer and Limitation of Liability

Palm, Inc. assumes no responsibility for any damage or loss resulting from the use of this guide.

Palm, Inc. assumes no responsibility for any loss or claims by third parties which may arise through the use of this software. Palm, Inc. assumes no responsibility for any damage or loss caused by deletion of data as a result of malfunction, dead battery, or repairs. Be sure to make backup copies of all important data on other media to protect against data loss.

IMPORTANT Please read the End User Software License Agreement with this product before using the accompanying software program(s). Using any part of the software indicates that you accept the terms of the End User Software License Agreement.

Contents

Palm™ BlueChat 2.0	1
How it works	1
System requirements	1
Installing BlueChat	2
Launching BlueChat	3
Getting Help	3
Starting a BlueChat session	3
Chatting	6
Sending messages	6
Sending frequently used phrases	7
Ending a chat session	8
Configuring BlueChat	8
Blocking chat requests	8
Assigning a new Bluetooth device name to your handheld	9
Changing the font	10
Troubleshooting	10
Index	11

Palm™ BlueChat 2.0

Palm™ BlueChat 2.0 allows you to wirelessly exchange text with other local BlueChat users in real time.

How it works



BlueChat relies on Bluetooth™ technology to allow you to exchange text with other BlueChat users. A Bluetooth-equipped handheld can wirelessly connect with similarly equipped handhelds up to 10 meters (30 feet) away. And unlike beaming, your handheld doesn't have to be pointed at another handheld in order to make a connection.

BlueChat uses the standard Bluetooth discovery process to automatically find all other BlueChat users in range. In addition, BlueChat stores the device names and addresses of the last ten BlueChat users you chatted with, so you don't have to go through the discovery process to find them again.

System requirements

To install BlueChat, your handheld must have at least 200 kilobytes (KB) of free RAM storage available.

To find the amount of RAM storage available:

1. Tap the Home icon .
2. Tap the Menu icon .
3. Tap Info in the App menu.
4. Tap Size.

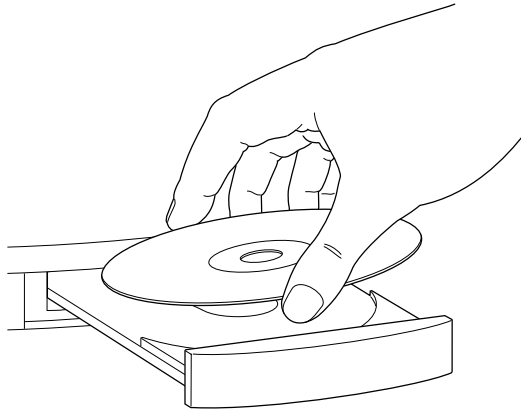
In the line beginning "Free Space" are two numbers. The second number is the total amount of RAM available on your handheld. The first number is the amount of free RAM available. If the first number can be rounded up to 200KB or more, your handheld has enough RAM to support BlueChat. For example, if the first number is 1MB (1 megabyte), your handheld has enough RAM.


Installing BlueChat

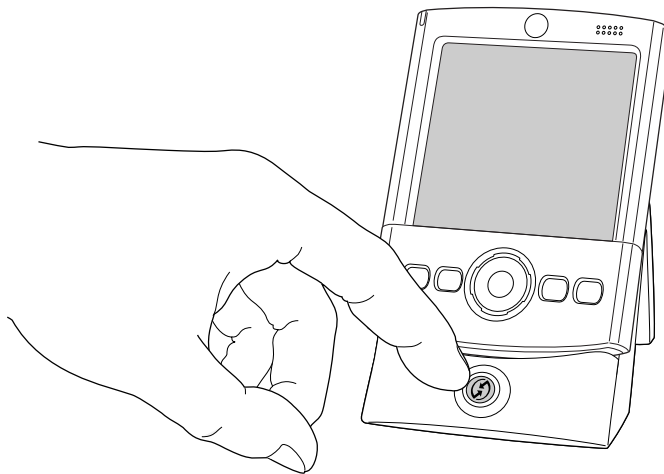
To use BlueChat, you must install the software files located on the Software Essentials CD-ROM.

To install BlueChat (Windows):


1. Insert the Software Essentials CD-ROM into your computer's CD-ROM drive.



2. From the categories listed on the left side of the Install screen click the Communications tab, click BlueChat, and follow the onscreen instructions.
3. Connect your handheld to the cradle/cable and press the HotSync® button ™.



To install BlueChat (Mac computer):

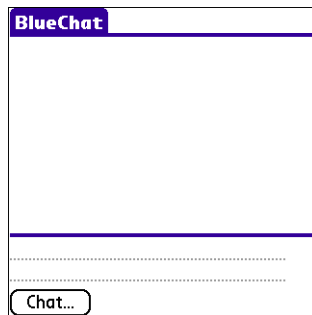
1. Insert the Software Essentials CD-ROM into your computer's CD-ROM drive.
2. Open the Software Essentials folder, open the Communications folder, double-click the BlueChat Installer icon, and follow the onscreen instructions.
3. Connect your handheld to the cradle/cable and press the HotSync button .

Launching BlueChat

Before you start “chatting”, you need to launch BlueChat.

To launch BlueChat:


1. Tap the Home icon .
2. Tap the BlueChat icon .

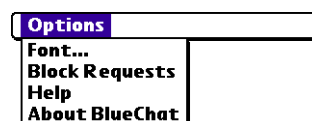


Getting Help

If you need assistance using BlueChat, you can get help.

To access BlueChat help:

1. Tap the Menu icon .
2. Tap Help from the Options menu.



Starting a BlueChat session

To use BlueChat, you must first connect with another user. The user who invites another user to chat is the *host*. The user who is invited is the *partner*.

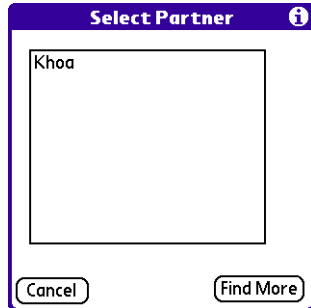
In order to connect with another user, the partner’s handheld must meet the following criteria:

- The handheld must include Bluetooth technology and be within 30 feet of your handheld.
- The Bluetooth preferences on the handheld must be set so that Bluetooth communication is on and the handheld is discoverable.
- The handheld must have BlueChat installed.
- The handheld can’t be running a different Bluetooth application.

To connect with a partner as a host:

1. The first time you use BlueChat, it automatically discovers all potential BlueChat partners in range and displays their names on the Select Partner screen.

If you've already collaborated using BlueChat, tap Chat to display a list of recent partners from previous BlueChat sessions on the Select Partner screen. BlueChat stores the names of the ten most recent partners with whom you've chatted.

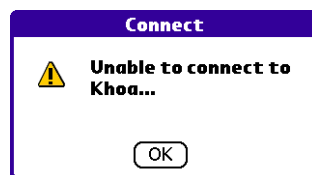


2. Tap the name of the partner with whom you wish to chat. If you do not see the partner with whom you wish to chat, tap Find More to refresh the partner list with all of the potential BlueChat partners within range.

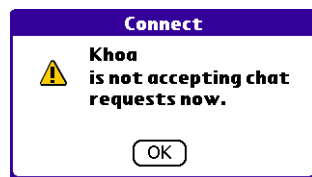


NOTE To stop the connection attempt, tap Cancel. Then tap Chat to display a list of recent partners or to start the discovery process again.

3. The chat request is resolved in one of several ways:
 - If the partner does not have BlueChat installed, has a Bluetooth application other than BlueChat running, or a connection can't be established for some other reason, you'll see the following message:



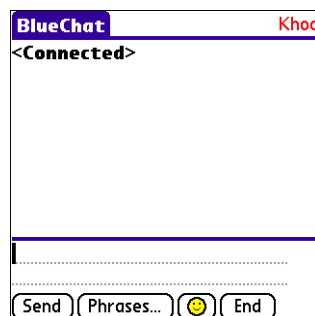
- If the partner has blocked all requests for BlueChat connections, you'll see the following message:



- If the partner declines your invitation, you'll see the following message:

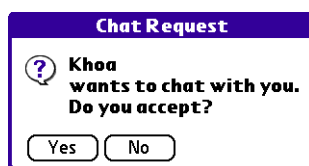


- If the partner accepts your invitation, the "<Connected>" message appears on both of your handhelds. The handheld name of the person with whom you are chatting appears in the upper-right corner of the screen. You're ready to start chatting.




To connect with a host as a partner:

1. When a host invites you to chat, you'll see the following message:

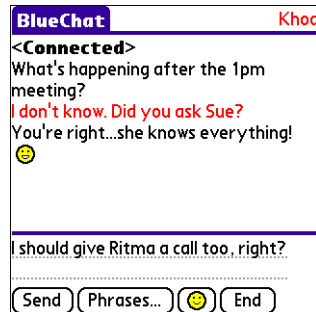


2. Tap Yes to accept the invitation and start chatting or No to decline the invitation.

TIP If you don't want to be interrupted by chat requests, you can block them. Tap the Menu icon , tap Options, then tap Block Requests.

Chatting


Once a successful BlueChat session has started, you use the main screen to exchange text. Your partner's text is shown in red and yours is shown in black.



Sending messages

During a BlueChat session, you send messages back and forth with your chat partner. You can even send messages to each other at the same time. BlueChat simply shows your messages in the order they're received.

To send a message:

1. Enter the text of the message you'd like to send. As you enter text, it appears in the input area. The first letter of your message is automatically capitalized for readability purposes.
2. (Optional) If you'd like to add a graphic to the message, tap the Graphics button , and choose a graphic. No matter when you tap the Graphics button, the graphic will appear at the end of your message when it is displayed.
3. When you are finished entering your message, tap Send.

The message is removed from the input area and appears in the active area of both handhelds.

As you and your partner both continue to send messages, they're appended to the list of messages in the active area. When the active area can no longer contain all the messages, a scroll bar appears so you can scroll back to the older messages in the session.

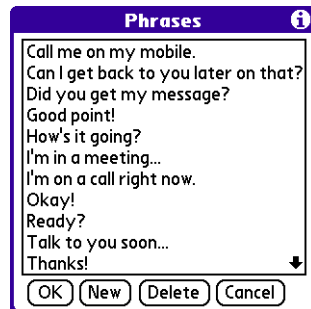
NOTE If your connection has been dropped due to interference, a partner moving out of range, or some other problem, a Lost Connection message appears in the active area of both handhelds and the connection screen appears. Tap Chat to start the connection process again.

Sending frequently used phrases

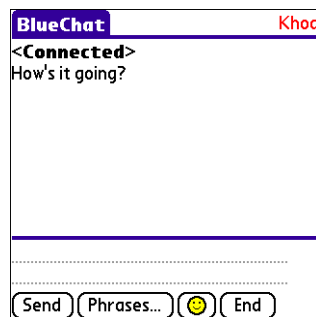
You can send one of BlueChat's stored phrases to speed up the chatting process.

To send a phrase:

1. Tap Phrases.



2. Choose a phrase from the list and tap OK. The phrase appears immediately as a message in the chat session.



You can add new phrases of your own or delete phrases. The phrases dialog box can store up to 40 phrases.

To add a phrase:

1. Tap Phrases.
2. Tap New.
3. Enter the phrase.
4. Tap OK.

To delete a phrase:

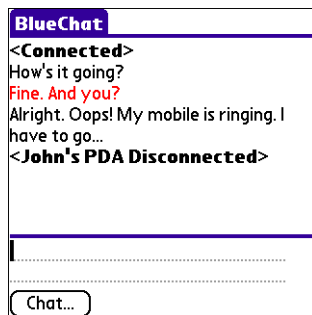
1. Tap Phrases.
2. Tap the phrase you want to delete.
3. Tap Delete.
4. Tap OK.

Ending a chat session

Once you are finished with your conversation, you can end your BlueChat session.

To end a chat session:

- Tap End on the main BlueChat screen. The session stops, a message appears in the active area of both handhelds, and the Chat button appears again.



Tap Chat to start the connection process again.

NOTE You can also just walk away from a chat session to end your participation in it, but this will cause a Lost Connection alert to appear on your partner's handheld.

Configuring BlueChat

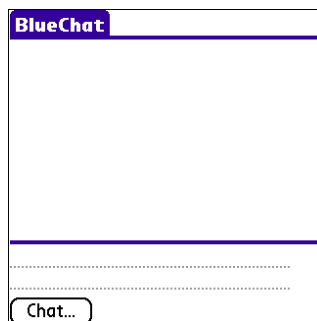
You can block chat requests, assign a new Bluetooth device name to your handheld, or change the onscreen font.

Blocking chat requests

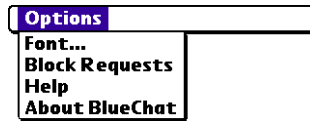
If you don't want to be bothered by chat requests, you can block them.

To block all chat requests:


1. Tap the Menu icon .



2. Tap Block Requests from the Options menu.



To stop blocking chat requests:



1. Tap the Menu icon .
2. Tap Allow Requests from the Options menu.

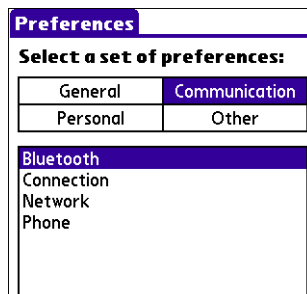
Assigning a new Bluetooth device name to your handheld

You can change the name that identifies your handheld to other BlueChat users by changing the name your handheld is known by in all Bluetooth applications.

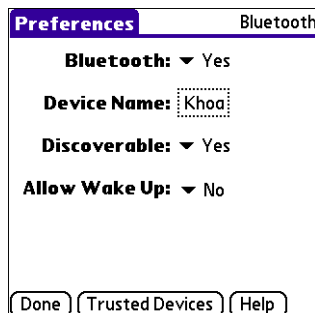
Note that this procedure will not change the HotSync name of your handheld, only how it is identified and discovered in BlueChat and other Bluetooth applications.

To name your handheld:

1. Tap the Home icon .
2. Tap the Preferences icon .
3. Tap Communication and then tap Bluetooth.



4. Tap the Device Name field, enter a new name for your handheld, and then tap OK.

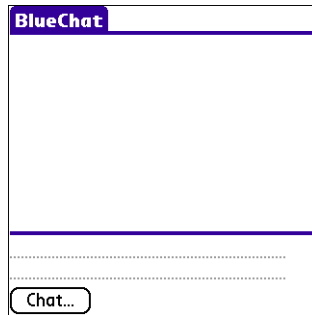


Changing the font

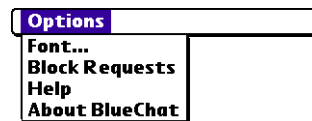
You can change the font size and style of text messages according to your personal preferences.

To change the font of text messages:

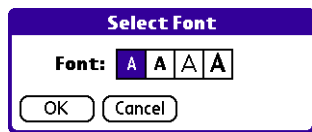
1. Tap the Menu icon .



2. Tap Font from the Options menu.



3. Tap the desired font, and then tap OK.



Troubleshooting

Problem	Solution
I get a message that says I lost the connection with my partner.	Either the distance between your partner and yourself has grown too large or an intervening object has broken your connection. Start the connection process again.
I can't discover or connect to any other partners even though they are within range.	Objects between Bluetooth users can obstruct connections. Try moving so the pathway between you and your chat partner is clear. Also, make sure your partner has set their Bluetooth preferences so that Bluetooth technology is on and their handheld is discoverable.

A

- Active area 6
- Adding a new phrase 7

B

- Blocking chat requests 8

C

- Chat requests
 - accepting 5
 - blocking 8, 9
 - making 4
- Chat session
 - ending 8
 - starting 3
- Color of messages 6
- Connected message 5
- Connecting
 - with a host 5
 - with a partner 4
- Connection requirements 3

D

- Deleting a phrase 7
- Device name 9
- Disconnected message 8
- Discovering partners 4

E

- Ending a chat session 8
- Entering a message 6

F

- Font size, changing 10
- Frequently used phrases 7

G

- Graphic, adding to a message 6

H

- Handheld Bluetooth name 9
- Help for BlueChat 3
- Host 3

I

- Input area 6
- Installing 2

L

- Launching 3
- Lost Connection message 6

M

- Message
 - adding a graphic to a message 6
 - color 6
 - sending 6
 - smileycon 6

P

- Partners
 - definition 3
 - discovering 4
 - recent partner list 4
- Phrases
 - adding 7
 - deleting 7
 - number you can store 7
- Prerequisites for BlueChat 1

R

RAM size 1

Range of BlueChat connection 1

Requirements to make a connection 3

S

Sending messages 6

Session

 ending 8

 starting 3

Size of text, changing 10

Smileycon, adding to a message 6

Starting BlueChat 3

Stored messages 7

System requirements 1

T

Troubleshooting 10