

Unit Converter
Version 1.4.2
By Process Ace Software

Installation and User Guide



August 27, 2004

LICENSE AGREEMENT	2
Single User License	2
Corporate License	2
CONTACT INFORMATION AND SUPPORT	3
Contacting Process Ace Software	3
Product Support	3
INSTALLATION ONTO YOUR Palm OS® DEVICE	4
Files	4
Installation Procedure	4
PROGRAM INFORMATION AND LIMITATIONS	5
RUNNING THE APPLICATION	6
Basic Operation	6
Menu Bar	6
<i>Edit</i>	7
<i>Options</i>	7
Steel Pipe Properties	7
Preferences	8
<i>Splash Screen</i>	8
<i>Output Formatting</i>	8
<i>Customizing Unit Categories</i>	8
<i>Help</i>	9
Tips	9
About	10
Graffiti® Shortcuts	10
Using Hacks on your Palm OS® Device	10
Troubleshooting Guide	11
Index	12

Copyright © 2003-2004, Process Ace Software

This User Guide along with the software that it describes are copyrighted (all rights reserved). No reproduction of this document in whole or in part is allowed without the written consent of Process Ace Software.

LICENSE AGREEMENT

Single User License

PLEASE READ THIS LICENSE CAREFULLY BEFORE USING THE SOFTWARE. BY USING THE SOFTWARE, YOU ARE AGREEING TO BE BOUND BY THE TERMS OF THIS LICENSE.

The application, **Unit Converter version 1.4.2**, is licensed to you by *Process Ace Software*. The software is protected by United States copyright laws, by laws of other nations and international treaties. This License allows you to use the Software on a single product using the Palm operating system and make one copy of the Software for backup purposes only. You may also transfer all your license rights in the Software, the backup copy of the Software, the related documentation and a copy of this License to another party, provided the other party reads and agrees to accept the terms and conditions of this License.

****IMPORTANT DISCLAIMER****

Under no circumstances including negligence shall *Process Ace Software* be responsible for any damages that result from the use of this software.

If your jurisdiction does not allow the limitation or exclusion of liability for incidental or consequential damages, IN NO EVENT SHALL PROCESS ACE SOFTWARE'S TOTAL LIABILITY TO YOU FOR ALL DAMAGES, LOSSES AND CAUSES OF ACTION EXCEED THE AMOUNT PAID BY YOU FOR THE PURCHASE OF THIS APPLICATION.

Corporate License

If you are interested in acquiring a Corporate License for any of our products, please contact us at:

contact@processacesoftware.com

CONTACT INFORMATION AND SUPPORT

Contacting Process Ace Software

If you have any questions about our products, or if you would like to discuss a corporate license or volume discount you can contact us at:

contact@processacesoftware.com

or visit our web page at:

<http://www.processacesoftware.com/>

Product Support

Unit Converter comes with free support and updates for the life of the product. We currently offer support via email or through our Yahoo! user-group. We try our best to answer all enquires within 24 hours.

For email support, please contact us at:

contact@processacesoftware.com

Or join our Yahoo! user-group via the following link:

http://www.processacesoftware.com/contact_process_ace_software.html

Note that the email address you provided when purchasing the product is the one used to notify you of updates. Contact us if your email address has changed to ensure the accuracy of our client list.

INSTALLATION ONTO YOUR Palm OS® DEVICE

Files

The following files are included in the download file for both the demo and registered versions. You must HotSync® them onto your PDA for *Unit Converter* to work correctly:

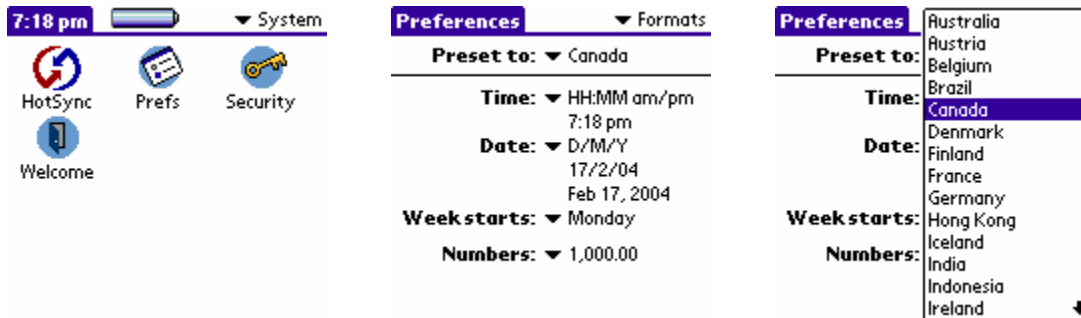
- MathLib.prc - Mathlib version 1.1
- NSBRuntime.prc - NS Basic Runtime version 4.3.0 (NOTE: This program requires version 4.3.0 or later to function properly)
- NSBSystemLib version 2.01 – Shared library for cut, copy, paste and undo commands (WARNING: Using an earlier version of NSBSystemLib will cause fatal errors on Palm Tungsten T3 devices)
- Converter.prc – Unit Converter application

Installation Procedure

1. **If you have Unit Converter version 1.1.0 on your device you need to delete it prior to loading version 1.4.2.** To do this:
 - a. Tap the “Home” button to place you in the Application launcher
 - b. Tap the menu button (or the top of the form) and select the “App” menu choice
 - c. Select “Delete” from the drop-down menu.
 - d. Using the “Delete” form tap “Converter” to highlight it in the list then tap the “Delete” button followed by “Yes” and “Done”.
2. Create a file folder then copy all of the files from *ConvertReg.zip* to this new folder.
3. Click the install icon within Palm Desktop, select “Add” then locate the new folder that you created.
4. Add Mathlib, NSBRuntime, NSBSystemLib and Converter to the installation list. Please note that MathLib, NSBRuntime and NSBSystemLib **MUST** have “Handheld” specified as the “Install To:” destination. ***Installing MathLib, NSBRuntime or NSBSystemLib to an expansion card will cause a fatal error when you attempt to use the application.***
5. After choosing “Done”, press the HotSync® button on your cradle to install the files.
6. An icon labelled *Converter* will show up in the *All* and *Unfiled* categories.

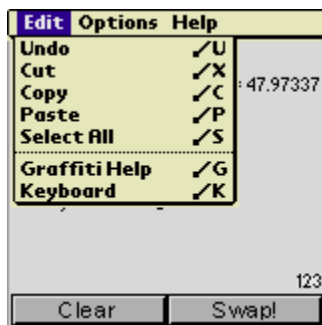
PROGRAM INFORMATION AND LIMITATIONS

Unit Converter by Process Ace Software supports the European number convention (i.e., using a "," instead of a "." for the decimal point). The program determines which convention to use based on the Country setting you have selected for your device.

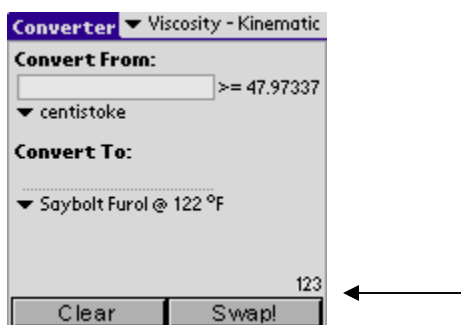


Please Note: Except for devices with a virtual Graffiti® pad (i.e., the Palm Tungsten™ T3), Unit Converter does not support using the Keyboard when invoked from the Graffiti® pad area. As a work-around there are two alternate methods for calling up the Keyboard.

Method 1 – From the menubar



Method 2 – Using the “123” button above the Swap! button



RUNNING THE APPLICATION

Basic Operation

From the Main Form (displayed after program start-up):

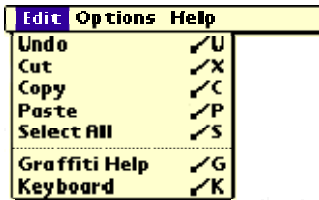
1. Choose the units category from the popup located to the right of the program title.
2. Tap the "Convert From" popup and choose the units you want to convert from.
3. Tap the "Convert To" popup and choose the units you want to convert to.
4. Enter a number in the box provided and the result is auto-calculated.
5. If you want to switch the convert from and convert to units simply tap the "SWAP" button at the bottom of the screen.

Limits flag: Note that for some density and kinematic viscosity selections a warning will appear to the right of the "Convert From" entry box. The result for the conversion will remain blank until you are within the limit that is specified.

Menu Bar

By tapping the form title at the top of the screen a number of menu selections appear. Details about these options and preferences are given in the next section of this user guide.

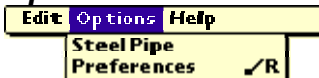
Edit



The following functions are available using the Edit menu item:

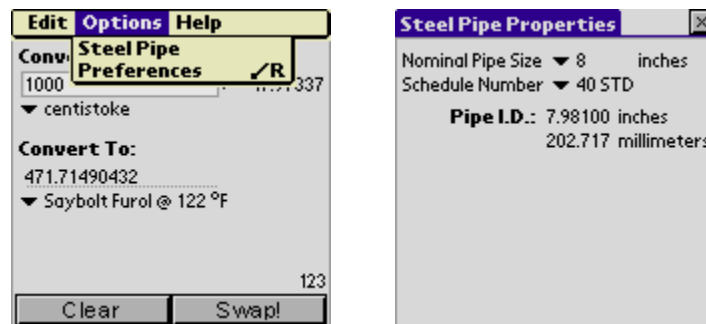
- Undo – undo the last cut or paste operation
- Cut – standard cut operation
- Copy – copy selection
- Paste – paste the “cut” or “copy” selection
- Select All – will select the entire field that currently has the focus (or has been “tapped”)
- Graffiti® Help
- Keyboard (note: must have a flashing cursor in a data entry field for this to work)

Options



Steel Pipe Properties

Tapping Steel Pipe from the Options drop-down list will take you to the Steel Pipe Properties form. Here you can choose a nominal pipe size and schedule number to allow the program to find the inside diameter.



Tapping the X button at the upper right hand side of the Steel Pipe Properties form will return you to the Converter form.

Preferences

Splash Screen

For faster start-up of the application select “NO” to the question asking if you want to see the splash screen at start-up of the application.

Output Formatting

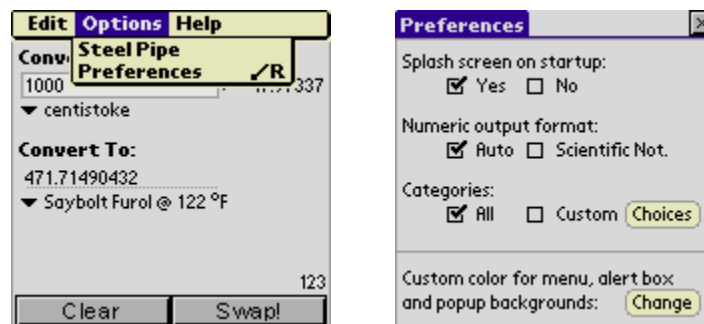
Unit Converter provides you with two options for displaying the calculated results, “Auto” and “Scientific Not”.

When “Auto” is selected, results will normally be in fixed format and will automatically switch to scientific notation in order to maintain a minimum of six significant figures. If “Scientific Not.” is selected, the output will always be in scientific notation. Auto-format is the default when the program is first loaded onto your device.

Customizing Unit Categories

When Unit Converter is first loaded onto your device 47 conversion categories are available. To make it easier to locate the categories you are interested in you can replace the standard menu with a custom menu.

Tap the menu-bar at the top of the screen and select Preferences from the Options drop-down list.



On the Preferences form, check the Custom checkbox then tap the Custom Menu Choices button. Page through the five pages of categories unchecking the ones that you don't want to see in your custom list.

Categories (1) 1 2 3 4 5 X

- ☒ Acceleration
- ☒ Angle
- ☒ Area
- ☒ Capacitance
- ☒ Computer Data
- ☒ Concentration (molar)
- ☒ Conductance
- ☒ Density
- ☒ Electrical Charge
- ☒ Electrical Current
- ☒ Electrical Potential

Categories (2) 1 3 4 5 X

- ☒ Electrical Resistance
- ☒ Energy and Work
- ☒ Enthalpy (mass basis)
- ☒ Enthalpy (molar basis)
- ☒ Entropy (mass basis)
- ☒ Entropy (molar basis)
- ☒ Flow (mass basis)
- ☒ Flow (std vapor and molar basis)
- ☒ Flow (volumetric basis)
- ☒ Flux of Light
- ☒ Force

Categories (3) 1 2 4 5 X

- ☒ Fuel Consumption
- ☒ Heat Capacity (mass basis)
- ☒ Heat Transfer Coefficient
- ☒ Illuminance
- ☒ Length
- ☒ Liquid Flowrate/Area
- ☒ Luminance
- ☒ Mass
- ☒ Power
- ☒ Pressure
- ☒ Pressure Drop per Unit Length

Categories (4) 1 2 3 5 X

- ☒ Radioactive Dose (absorbed)
- ☒ Radioactive Dose (equivalent)
- ☒ Radioactivity
- ☒ Scale (length)
- ☒ SI Prefixes
- ☒ Specific Volume
- ☒ Surface Tension
- ☒ Temperature
- ☒ Thermal Conductivity
- ☒ Torque
- ☒ Velocity

Categories (5) 1 2 3 4 X

- ☒ Viscosity - Absolute
- ☒ Viscosity - Kinematic
- ☒ Volume

Tapping the X button at the corner of the screen on either the Preferences or Categories forms will return you to the main Converter form. Also, anytime you wish to use the full list of categories simply return to the Preferences form and check “All”. Your custom list is retained if you want to use it again in the future.

Help

Edit Options **Help**

Tips ✓ H

About

Tips

Tapping the menu-bar on the Converter of Steel Pipe Properties forms and selecting Tips from the Help drop-down will take you to a help screen providing tips related to that form.

Please Note: A list of frequently asked questions (FAQ) for all of our applications can be found on our website:

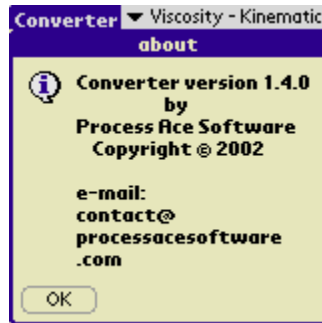
www.processacesoftware.com/faq.html

We also offer free support for all licensed users for the life of the product at:

contact@processacesoftware.com

About

Tapping “About” pops up the following information form:



Tap “OK” to return to the program.

Graffiti® Shortcuts

The following menu shortcuts are available for this product:

- /C - Copy
- /G - Graffiti® Help
- /H - Tips (built-in help files)
- /K - Keyboard
- /P - Paste
- /R – Preferences
- /S – Select All
- /U - Undo
- /X – Cut

Using Hacks on your Palm OS® Device

Hacks are applications that modify the functionality of the operating system. All of our applications are fully compatible with unmodified Palm OS®. However, if you are running a hack, you may experience problems. If you do, you must disable the hack before running our application.

Troubleshooting Guide

Problem

Solution

My Tungsten T3 crashes with a “Fatal” error when my device powers down with Unit Converter running.

Verify that you have NSBSystemLib version 2.01 and NSBRuntime version 4.3.0 installed on your device.

I get a “Problem reading from database ConvertDb” error on start-up.

This error is due to another application (also called Converter) being installed on your device. Delete “Converter” from your handheld then reinstall our application.

See page 4 of this user guide for instructions on how to delete an application from your device.

I get a “Fatal” error:

- On start-up
- or
- When the Splash Screen appears
- or
- When I use a menu

These type of errors are due to one of the following:

1. A “hack” (i.e., some third party launcher programs) being installed on your device. These programs modify Palm OS, sometimes with unpredictable results.

Unit Converter will work properly with unmodified Palm OS. Disable the hack to verify if this is the problem.

2. NSBRuntime, NSBSystemLib or MathLib being installed on a memory card instead of on the handheld itself. These files must be installed **ONLY** on the handheld.

Index

About, 10
Basic operation, 6
categories, 4
Categories forms, 8
Contact Information and Support, 3
Contacting Process Ace Software, 3
Copy, 7
copyright, 1, 2
Corporate License, 2
Custom menu, 8
Cut, 7
Disclaimer, 2
Edit, 7
email support, 3
expansion card, 4
FAQ, 9
formatting, 8
free support, 3
frequently asked questions, 9
Graffiti Shortcuts, 10
Graffiti® Help, 7
Hacks, 10
Help, 9
Installation, 4
Installation Procedure, 4
Keyboard, 7
Limitations, 5
Limits flag, 6
MathLib, 4
Menu Bar, 6
NSBRuntime, 4
NSBSystemLib, 4
Options, 7
output, 8
output formatting, 8
Paste, 7
Pipe properties, 7
Pipe Properties, 7
Preferences, 8
Preferences form, 8
Product Support, 3
Running the Application, 6
Select All, 7
Single User License, 2
Splash Screen, 8
Tips, 9
Troubleshooting, 11
Undo, 7
Unit categories, 8
Unit Converter application, 4
user-group, 3
web page, 3
Yahoo! user-group, 3