

# **WordWizard**

**by Webvisia LLC**

## **User Guide**

[www.webvisia.com](http://www.webvisia.com)

© Copyright Webvisia LLC, 2002

All rights reserved. This manual and the programs referred to herein are copyrighted works of Webvisia LLC

The information in this document is subject to change without notice.

Webvisia LLC accepts no liability for loss or consequential loss from misuse or any defect or failure of the programs howsoever arising.

© 2002 Webvisia LLC, WordWizard and WordWizard Logo are trademarks or registered trademarks of Webvisia LLC in the U.S. and/or other countries. All rights reserved. 3Com, the 3Com logo, Palm Computing and HotSync are registered trademarks, and PalmIII, Palm IIIx, Palm V, the Palm III logo, the Palm IIIx logo, the Palm V logo and the Palm. Computing platform logo are trademarks of Palm Computing, Inc, 3Com Corporation or its subsidiaries. Acrobat and PDF are trademarks of Adobe. All other brands and product names may be trademarks or registered trademarks of their respective holders.

Version 4.01  
January 2004  
English

## **LICENSE AGREEMENT**

\*\*\* Please read this entire agreement \*\*\*

This End-User License Agreement (the "Agreement") is a legal agreement between you ("Licensee"), the end-user, and Webvisia LLC ("Webvisia") for the use of the WordWizard software product ("Software").

By using this Software or any part of it, you are agreeing to be bound by the terms of this Agreement.

If you do not agree to the terms of this Agreement do not install this Software.

## **COPYRIGHT**

Both United States copyright law and international treaty provisions protect this Software.

## **LICENSE AND DISTRIBUTION**

The evaluation copy of this Software is free of charge for unlimited period of time. You must pay the license fee and register your copy to continue to use the Software and remove the reminder.

The evaluation copy is fully functional except for the reminder that slows on defined count of predictions. You're allowed to make as many copies of this evaluation version (in UNMODIFIED form) as you wish to distribute.

## **RESTRICTIONS**

You may not nor permit anyone else to de-compile, reverse engineer, or disassemble, modify or create derivative works based on the SOFTWARE or the documentation in whole or in part. You may not use the Software for any commercial purpose or public display, performance, sale or rental. You may not use the Software to perform any unauthorized transfer of information (e.g. transfer of files in violation of a copyright) or for any illegal purpose.

## **NO WARRANTIES**

This software and any related documentation is provided "as is" without warranty of any kind.

Webvisia LLC specifically disclaims all warranties, expressed or implied, including but not limited to implied warranties of fitness for any particular purpose and of merchantability.

## **LIMITATION OF LIABILITY**

In no event will Webvisia LLC be liable to you for any damages, including but not limited to any loss of data, lost profits, lost savings, commercial damage or other incidental or consequential damages arising out of the use or inability to use this program directly or indirectly, or for any claim by any other party.

## **Contacting Webvisia LLC**

There are several ways to get in touch with us here at Webvisia LLC. E-mail is the preferred form of communication, but whatever works for you is fine. If you have any questions, commands, suggestions or compliments, please don't hesitate to contact us.

E-mail: [support@webvisia.com](mailto:support@webvisia.com)

World Wide Web: <http://www.webvisia.com>

## Reporting Bugs

If you find a bug in our software, it would be helpful if you reported the bug to us. To report a bug, please e-mail us with Bug Report Request in the subject line. In your e-mail, include the following information:

What type of PalmPilot you are using (i.e. Tungsten T).

The software name and version number (i.e. WordWizard 4.01).

The error number and the exact contents of the error message.

A brief description of how we can recreate the error.

Your name and e-mail address so we can contact you when the bug is fixed.

It is best to report bugs by e-mail, so that the programmers have a written record of the information they need to solve the problem. As soon as we receive your e-mail, we will examine the problem, and fix it. Because our programmers are busy creating software, it can take a while for them to reply, but they will release a new version of the software that fixes the bug as soon as they can.

Database	Description	Kb
WordTrEng.pdb	English non-topical word treasure.	151
WordTrEngExt.pdb	English non-topical extended word treasure	333
WordTrEngTech.pdb	English technical word treasure	158
WordTrGer.pdb	German non-topical word treasure	101
WordTrGerExt.pdb	German non-topical extended word treasure	663
WordTrFr.pdb	French non-topical word treasure	289
WordTrIta.pdb	Italian non-topical word treasure	110
WordTrRuTech.pdb	R Russian technical word treasure	374
WordTrNo.pdb	Norwegian non-topical word treasure	133
WordTrDutch.pdb	Dutch non-topical word treasure	141
WordTrSpa.pdb	Spanish non-topical word treasure	179
WordTrSwe.pdb	Swedish non-topical word treasure	198

## System Requirements

Palm OS 5.0 or higher  
282 KB free memory

## Registering WordWizard

**WordWizard** is a downloadable shareware. Its registered copy costs \$9.95. The demo version is with limited features. For example, you are not allowed to use the following features - Put space after words, Predict on backspace, Disable history as well the Auto text.

After purchasing the product, you will receive an unlock key and on registering the product you will be able to use the whole program's features.

You can buy/register WordWizard at

[www.palmgear.com](http://www.palmgear.com)

To register this program first tap on the Menu silkscreen button. Then, select Help, and tap Registration. Finally, enter your Registration Key in the space provided.

**To register this program you have to purchase it first. Please go to [www.palmgear.com](http://www.palmgear.com) to buy it. After receiving your registration key type it in the space provided.**

**Registration Key**

| .....

**Ask me later**   **Register**

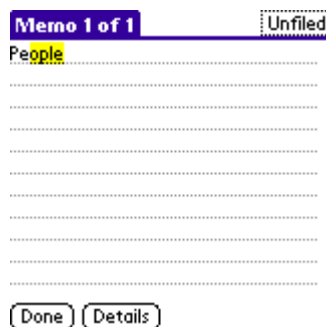
To install WordWizard, please upload on your device both .prc files – Wordwizard.prc and Fep.prc as well as the corresponding word treasure that you would like to work with – for example WordTrGer.pdb.

# WordWizard – Program Description

## Welcome

**WordWizard** is an extension of PalmOS, which greatly improves the speed of the text writing by Graffiti and all kind of keyboards (software and hardware). The dialogue program gives you the opportunity for different settings of the extension, including activation and deactivation. Like most PalmOS extensions **WordWizard** shows its full capacity when working within another application (MemoPad, DateBook or any other program with text processing). That is why under '**WordWizard**' below the extension is considered. The setting dialogues are called 'dialogue program'.

After uploading the program on your device a graffiti indicator will appear on the screen. It is a small dot – red or green depending on the present state of the application. Once activated, **WordWizard** tracks the symbol input in each edit field located in any PalmOS application. On a basis of already entered symbols it predicts the word you would like to write. The predicted part of the word is highlighted in yellow as it is shown in the picture below.



When you enter the next letter/symbol the highlighted part of the word disappears and the symbol takes its place. The predicted word can be accepted by writing down a special hotkey (default is 'return' - look chapter '**Select hotkeys**' from '**MENU Description**' below) or simply by tapping the 'return' key on the PDA's keyboard. To ignore the predicted word and to accept only the symbols that you have written you have to tap the 'space' button once if the typed word is the last one in a sentence or twice to enter a space after the written word.



Predictions can be made in the following way. When you write down a special hotkey (the default one is 'tab' - look chapter '**Select hotkeys**' from '**MENU Description**' below), a "popup" list will appear in the bottom part of the screen, it shows different suggestions that correspond to the part of the word you have entered so far.

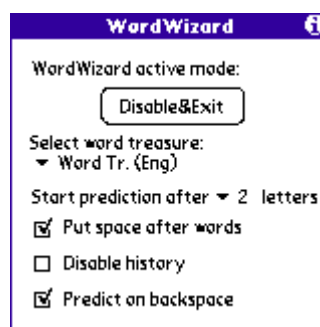
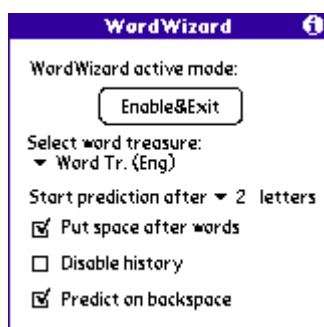
The word selected from this list is considered as an acceptance of the prediction and the word entered in the field is expanded to the full word. Tapping out of the list closes it without acceptance of the prediction. The next input of a tab acts as a usual tabulation.

Predictions are made on the basis of two word collections – “**Word treasure**” and “**History**”. See below for details.

**Hint:** Pay attention to the predictions because if you miss the right word, you will have to write it whole. **WordWizard** remembers what it has already predicted and do not give the same prediction again until you start a new word..

## Activating/Deactivating

The activation/deactivation of **WordWizard** is done by the “**Enable&Exit**”/ “**Disable&Exit**” button from the dialogue program. When the program is activated a green dot will appear on the graffiti area whereas if it is deactivated – the dot will be red.



## Word treasures

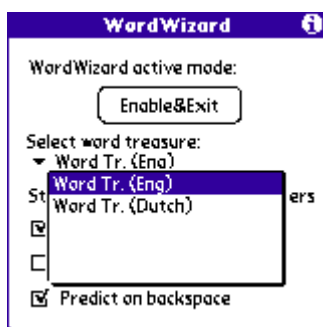
### What is a Word treasure?

“**Word Treasure**” is a database, containing constant count of words, which is distributed by **Webvisia** as a separate .pdb file. The words in a **Word treasure** are arranged by the frequency of their usage in a multitude of texts. Most of the **Word treasures** are topical – business, technical, legal and so on. Different languages are supported – English, German, French, and so on.

### Selecting active Word treasure

Several **Word treasures** can be installed on the handheld device but only one of them can be active at one and the same time. To choose the active **Word treasure** tap on the arrow next to “Treasure” and select the corresponding treasure from the pop up list (look at the picture below).





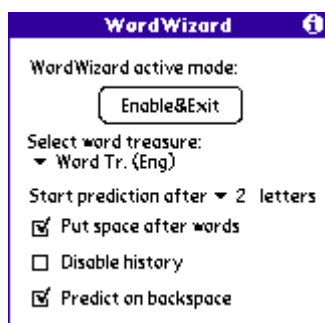
## History

### What is “History”?

The “**History**” is a self-training database, in which up to 1000 recently used words are stored, no matter if they are included in the **Word treasure** or not. The “**History**” has many advantages in word predicting and it is a good mean for improving the prediction algorithm. If you use a given rare word frequently by the means of the “**History**” the prediction of it will be faster.

### Enable/Disable “History”

The “**History**” is a very useful feature because it can remember names and digits (it remembers even words like “atrehg1buy”), but decreases the efficiency of **WordWizard** as a spell-checker, so you may have to switch this feature off. (In fact **WordWizard** is not a typical spell-checker, but it helps you to write correctly.)

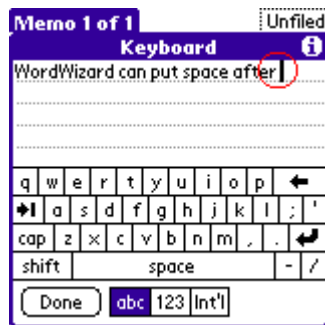


### Clear “History”

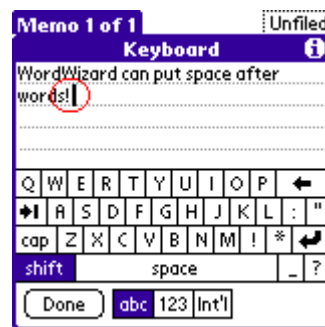
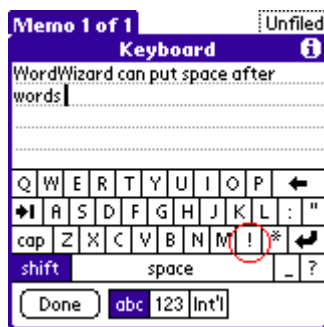
Sometimes it happens that **WordWizard**’s “**History**” remembers a misspelled word. As the “**History**” has a priority over the **Word treasure**, **WordWizard** will always predict the wrong spelled word before the right one. One solution to this confusing situation is to disable the “**History**”, but that leads to loosing of functionality. It’s better just to clear the “**History**” database. See **Menu description** chapter bellow for details.

## Put space after words

In most cases the written word is followed by a separating space – an obligatory character to write. When the option **Put space after words** feature is activated, **WordWizard** will save you this repeating action by putting a space behind the accepted prediction automatically.



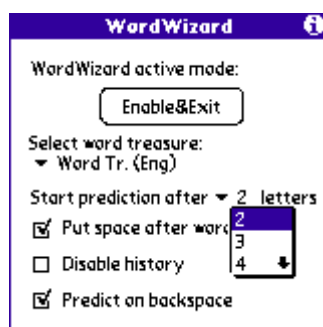
**WordWizard** puts a space after words no matter if the word is the last one in the sentence or not. If you want to input a full stop, a question mark and so on – the last space has to be deleted.



## Start prediction after 'n' letters

**WordWizard** enables the user to set up the number of letters/symbols, which have to be entered before the program starts its prediction algorithm.

If you choose 4, **WordWizard** will begin to give suggestions after entering the fourth symbol.



## Predict on backspace

When the option **Predict on backspace** is checked, this feature forces the extension to predict not only when you enter a letter, but when you delete one too. This is very useful when a letter is mistaken. Users that are not very familiar with Graffiti handwriting will appreciate this advantage.

## AutoText

The **AutoText** allows you to define an abbreviation and the corresponding text that it shall be replaced with and when you write this abbreviation and the special hotkey WordWizard will automatically expand it to the replacement text (look chapter ‘**Select hotkeys**’ from ‘**MENU Description**’ below). The Abbreviation recognition algorithm is case-sensitive so be careful to write the abbreviation exactly like you have defined it.



From:	To:
USA	United States of ...
GB	Great Britain

OK New

The **AutoText** can be enabled or disabled by tapping on the corresponding checkbox shown on the picture bellow.

To define an abbreviation go to **Menu | Options | AutoText** and tap on **New** button. Specify the abbreviation's text in the **From (abbreviation)** field and the replacement text in **To (replacement text)** field. Note that spaces, enters and tabs are not allowed in the abbreviation's text (in replacement text they are allowed).

**Hint:** Use up and down arrow Graffiti symbols to jump between the fields of **New/Edit AutoText** forms.



From:	To:
USA	United States of ...
GB	Great Britain

OK New



From (abbreviation):  
GB

To (replacement text):  
Great Britain

Done Cancel Delete



From (abbreviation):  
USA

To (replacement text):  
United States of America

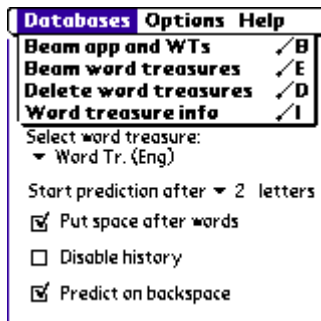
Done Cancel Delete

Tapping on a row from the table in **AutoText** dialogue opens the selected abbreviation for edition.

**Hint:** Typing a letter while **AutoText** dialogue is active is considered as a start of a new abbreviation edition. A **New AutoText** dialogue will appear and the **From (abbreviation)** field will start with the typed letter.

## MENU Description

### Databases:

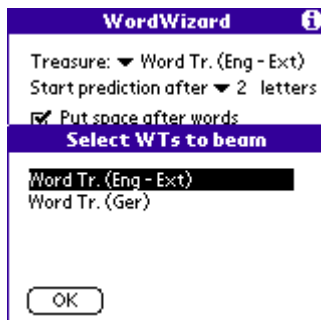


### Beam app and WTs:

### Beam “Word treasures”:

These two menu items give the opportunity to beam the application as well as the treasures directly to another device.. We recommend using the “**Beam app and WTs**” if there is no **WordWizard** on the other device. The other way is to beam the program from the system launcher and after that to use “**Beam Word treasures**”.

The both menu items display a dialogue window where you can choose the word treasures to be beamed:

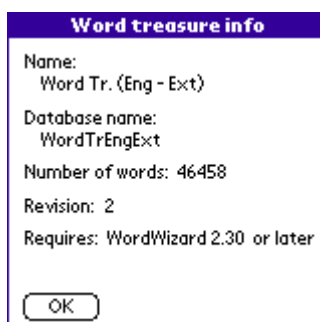


You can choose more than one-word treasures. (“**Beam app and WTs**” does not display this dialogue if there is only one word treasure on the device).

### Delete “Word treasures”:

Gives you the opportunity to delete separate **Word treasures**.

**Word treasure info** – gives information about the active **Word treasure**.



**Name** - identify the database.

**Database name** - the name of the .pdb file.

**Number of words** – shows the number of the words in the database;

**Revision** – shows how many revisions of the database are made.

**Requires** – the minimum required version of **WordWizard** to operate with this database.

## **Options**

### **AutoText:**

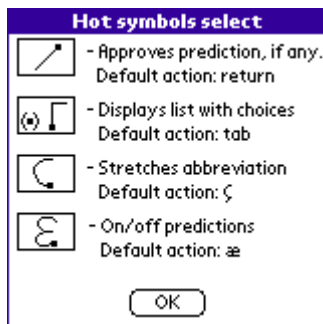
Displays a dialogue that enables the abbreviation definition.

### **Clear history:**

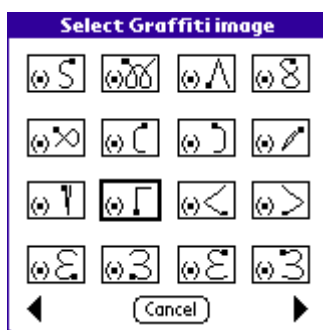
Clears the history database. It is useful when wrong spelled words are stored in the database.

### **Select hotkeys:**

Enables the selection of hotkeys for accepting of predictions, displaying the list with predictions and stretching abbreviation.



Tapping on the picture or the explanation text opens a dialogue with all choices:



## **Help**

### **Help:**

Provides some tips for using the program more efficiently and give explanations of the settings.

### **Registration:**

Displays the registration form or an alert if the program is not registered yet.

### **About WordWizard:**

More about the **WordWizard** dialogue.

## **The End**

Well, that's all for now. Enjoy your time with **WordWizard**!

**Webvisia LLC**

**[www.webvisia.com](http://www.webvisia.com)**