



# **ZLink User Manual**









**By ZZTechs**



## **ZLink User Manual**

Thank you for using ZLink, we strongly recommend that you read this manual before using ZLink:

ZLink can create a launchable link for applications and documents in RAM or on the expansion card, SAVING Memory!

	ZLink User Manual.....	i
<b>Application Description</b> .....		1
<b>Requirements</b> .....		1
<b>Installation/Registration</b> .....		1
<b>What kind of application/document can create Link?</b> .....		2
<b>User Interface</b> .....		3
•	Free Space of RAM/Card display and Tabs .....	3
•	To select an expansion card in a multi-slot device.....	3
•	Functionality in each column .....	4
•	Tool Bar buttons .....	4
	Information.....	4
	Create Link.....	5
	Move Back .....	5
	Beam .....	5
	Delete .....	6
	Launch.....	6
	Filters .....	6
•	MENU.....	7
♦	Delete Link .....	7
♦	Update Link .....	7
♦	Preferences .....	7
■	File Type.....	7
■	DB Type .....	8
■	Hide link when card removed.....	9
■	Use Buffer .....	9
<b>How to navigate the User Interface</b> .....		9
<b>Create a link for an applications/documents in RAM</b> .....		10
<b>Create a link for an application/document on an expansion card</b> .....		12
<b>Create a phone link</b> .....		12
<b>Create a link for a batch of files on expansion card</b> .....		13
<b>Additional functionality</b> .....		15
•	What to do after an expansion card name has changed.....	15
•	The Preferences information of a link and its associated database .....	15



• How to update application that moved to expansion card? .....	15
<b>Release History</b> .....	16
<b>Disclaimer and Legal Stuff</b> .....	16
<b>Contact Us</b> .....	16



ZLink is an application that helps you create a link for applications and documents that are installed in RAM or on an expansion card. ZLink let you take advantage of an expansion card to free up internal memory. It can also create a telephone link; you can dial the telephone number by activating the phone link. (This function works on a phone device only.)

### **Application Description**

- ZLink can create a link for applications (including Application, Panel and DA) stored on device (including on an expansion card or in RAM). Applications stored in RAM will be moved to the expansion card along with the link created.
- You can create a link for applications/documents under any expansion card directory. (Except the ZLink directory)
- Supports create a link for a specific database (e.g. E-book, image) stored on the device (including RAM/ROM) and expansion card.
- Supports create links for file (MP3, Jpeg, Mpeg, TXT etc) stored on expansion card to open music, image, video and text quickly.
- Supports create a link for a batch of files under any directory on an expansion card.
- Supports create a phone link.
- You can use a different icon for each link. Supports Zlauncher Iconset.
- Supports buffer. With the buffer, you can open frequent used links quickly, and extend the life of your battery and expansion card. You can specify the size of the buffer.
- Supports multi-slot devices and navigate to different expansion cards on the same time device at the same time.
- Hide link when expansion card removed.

### **Requirements**

- Your handheld must be running Palm OS4.0 or higher.
- Full Color support from 4-bit color to 16-bit color depth. (except monochrome)
- High-resolution/density supports: Sony Hi-Res (320x320 and 320x480), Palm Hi-Res (320x320 and 320x480).
- Supports Palm OS 5
- Supports multi-slot devices. (Up to 4 expansion slots)
- Does not support Bluetooth for the moment.

### **Installation/Registration**

- Installation: Extract ZLink.prc from the downloaded package, and synchronize it onto your device.
- Registration:
  - Step1: Open ZLink, and select Option – About/Register from the drop down menu.
  - Step2: Select the Register button from the pop up dialog.
  - Step3: Enter the registration code in the blank space.



Step4: Tap on the Register button. You will see a pop up dialog telling you that the registration code is correct, assuming it is.

### **What kind of application/document can create Link?**

- ZLink can create a link for applications (including Application, Panel and DA) stored on device (including on an expansion card or in RAM). Applications stored in RAM will be moved to the expansion card along with the link created.
- Supports create a link for a specific database (e.g. E-book, image) stored on the device (including RAM/ROM) and expansion card.

Supports files listed below:

HandStory Clip	iSilo Doc	Txt doc (Creator is TEXTt)
WordSmith Doc	Splash Photo	Palm Photo
Documents To Go (v. 6.005 or above)		

Supports files listed below (On an expansion card):

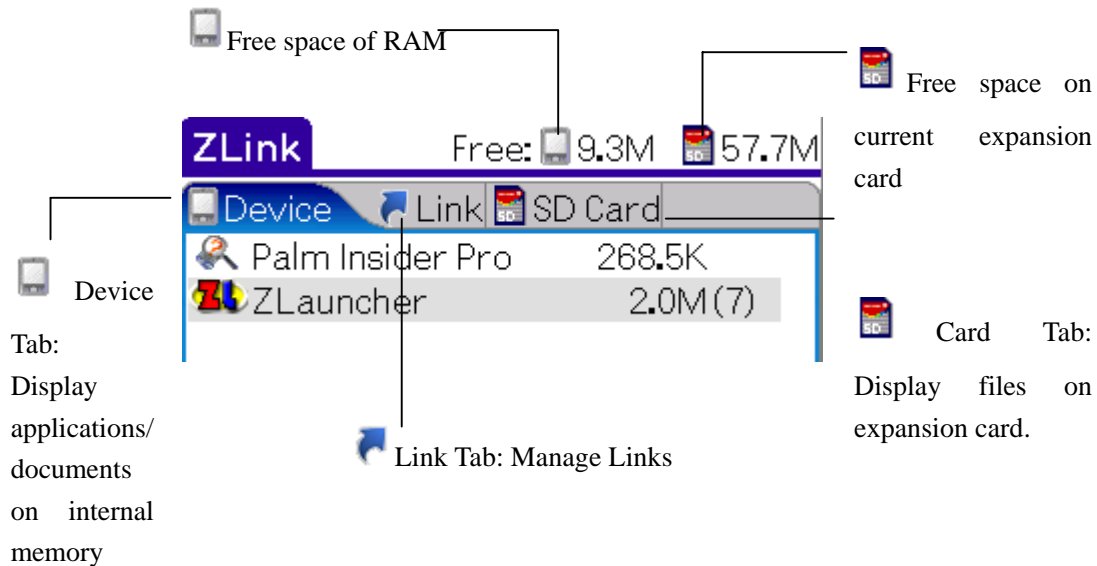
.TXT	.MP3	.WMA	.AVI
.WAV	.ASF	.MPG	.MPEG
.JPG	.GIF	.BMP	.PNG
.DOC	.XLS	.PPT	.HTM/.HTML
.XML	.CSV	.RTF	.PDF
.RM(Audio only)			

ZLink can open files only if the corresponding application is installed. For instance, you only can open a link (iSilo Doc only) if you have iSilo installed.

You can assign a specified application to open a link.

## User Interface

- Free Space of RAM/Card display and Tabs

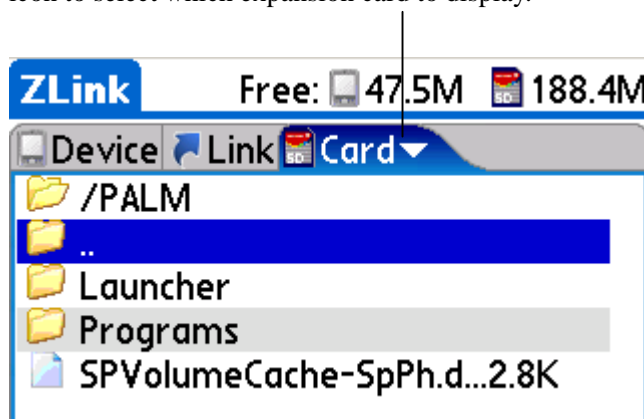


Tap on the Tab icon to toggle from tab to tab.

The card tab will appear when an expansion card inserted. The title of the expansion card tab will be the same as the title of the expansion card.

- To select an expansion card in a multi-slot device

The arrow symbol on the card tab, which mean there are two or more expansion cards inserted. Tap on the arrow icon to select which expansion card to display.



The expansion card icon will show which expansion card has been selected:

- The first expansion card
- The second expansion card
- The third expansion card

ZLink will refresh the screen when the expansion card change.



- Functionality in each column

Free: 9.4M 58.1M

Device Link SD Card

Icon	Item Name	Size
Network icon	Network	37.2K
Owner icon	Owner	3.3K
Palm Insider Pro icon	Palm Insider Pro	268.5K
Phone icon	Phone	20.9K
Prefs icon	Prefs	6.2K
Security icon	Security	12.8K
ShortCuts icon	ShortCuts	5.3K
To Do List icon	To Do List	65.4K (1)
Welcome icon	Welcome	713.7K
ZLauncher icon	ZLauncher	2.0M (7)

Icons types:  
◆ This item is from ROM

The size of this application and its databases

Associated databases and files of this application

Icon of application/document/file

Icon Name

Device Link SD Card

Icon	Item Name	Size
Palm Insider Pro* icon	Palm Insider Pro*	268.6K (2)

Icons types:  
✓ This link is buffered

- Tool Bar buttons



### Information

Displays the associated database and information about the current item (Including type, creator and time). On the link tab, this button will become an Edit Link button. For example:





Change the icon by tapping on the icon.

You can do it with any Link.

Modify the name of this Link

Find: Switch to Link and its associated database/file.

Done: Back to the user interface without saving any setting you changed.

Save: You need to press this button to save any changes for the link.

Move: Supports to moving an associated database of a link from an expansion card to RAM.

Add: Supports adding an associated database to this link. (Note: Links created by applications installed on an expansion card are not support.)



### Create Link

Create Link. Please refer to [Create link for applicaion/document on RAM](#) and [Create link for file on expansion card](#).



### Move Back

Moves the selected Link and its associated database back to RAM and then deletes the Link.



### Beam

- ◆ User can select any of the following methods when the item to be beamed is a link to an application:
  - Beam application
  - Beam related database

■ Beam link



**Delete**

On the *Device* tab, pressing *Delete* will delete the selected database/application (including related databases).

On the *Link* tab, pressing *Delete* will delete only the Link. If the associated file of link is still stored in the RAM, you still can re-create a link for it. If the associated file of link is on an expansion card, you can recover it by option *Update Link*.



**Launch**

Operate or open the selected item.



**Filters**

Filters allow you to display only specified files.

On the *Device* tab:

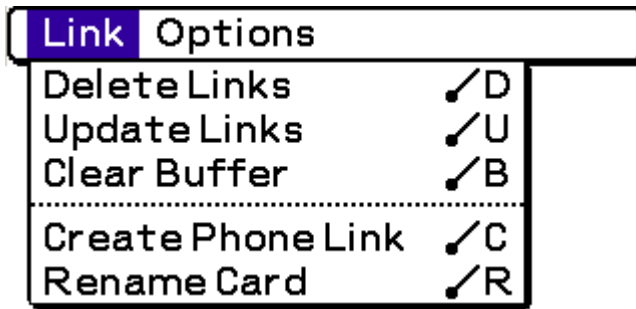
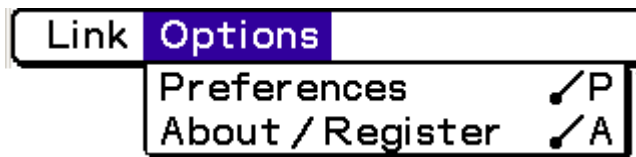
Options	Display
All	Display all applications on the device that are able to create a Link.
Application	Display applications in RAM
DA	Display DA applications
Panel	Display Panel applications
ROM Apps	Display applications in ROM
Special DB	Display the specified document. (e.g. E-book, image)

On the *Link* tab:

Options	Display
All	Display all Links
Device	Display phone links and Links not created from and expansion card.
Card Name	Display Links created from the expansion card with the specified names.



- MENU

*Delete Links**Update Links**Clear Buffer**Create Phone Link**Rename Expansion card**Preferences**About/Register*

- ◆ *Delete Link*

Delete links from internal memory or expansion card. This operation deletes only the link; it will not delete its related database and file. You can recover a deleted link by using *Update Link*. (Note: Links not created by an application installed on an expansion card cannot be recovered.)

- ◆ *Update Link*

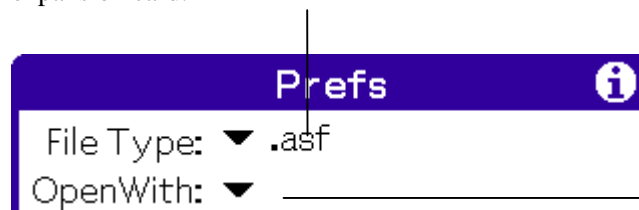
You need to insert the expansion card containing the application that created the link. When you select this option ZLink will update the links to the device.

- ◆ *Preferences*

You can assign database opening method, buffer size, etc. here. With this option, you can specify an application to open a database or file; hide a link when an expansion card is removed, and specify the size of the buffer.

- File Type

Select File types that allow creating a link from an expansion card.



Assign an application to open this file.

Select *File Type* first, then select an application to open the file in *OpenWith*.

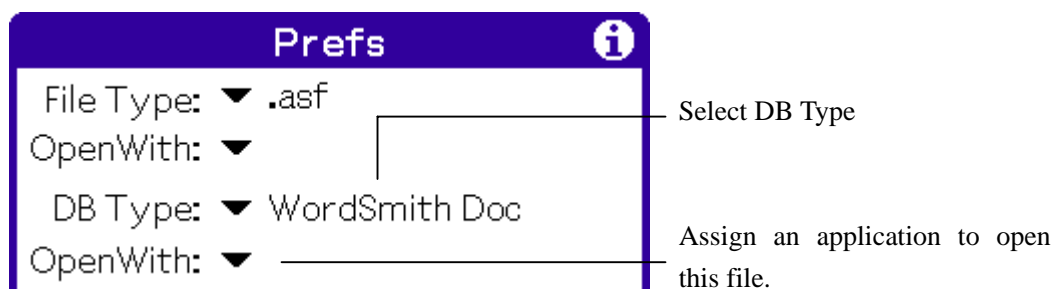
Note:

With the OpenWith option, you can select only the application that you installed.

Supports the following application and file types:

Application	File Type
Web	.htm .html
Documents To Go (v.6.005 or above)	.doc .xls .ppt
ZreaderLite	.txt
TCPMP player	.mp3 .mp4 .mpeg .mpg .wav .avi .asf .jpg
Real Player	.rm
PTunes	.mp3 .wma
MMPlayer	.mp3 .mpeg .avi .wav
AcidImage	.jpg .gif .bmp
AcidImage Pro	.jpg .tif .gif .bmp
RescoViewer	.jpg .gif .bmp
Grx View	.jpg .jpeg .gif .png .bmp
SplashPhoto	.jpg
Palm Media	.jpg .jpeg .bmp .gif .asf .mpeg .mpg
PalmPDF	.pdf
OfficeSuite	.doc .xls .ppt .xml .csv .rtf .txt

#### ■ DB Type



Select DB Type first, and then assign an application to open this file in OpenWith.

Note:

With the OpenWith option, you can select only an application that you installed.

Supports the following applications and DB types:

Application	DB Type
HandStory	HandStory Clip, Txt doc,



iSilo	iSilo Doc, Txt doc
WordSmith	WordSmith Doc
ZReaderLite	Txt doc
SplashPhoto	SplashPhoto, Palm Photo

- Hide link when card removed

This option allows you to hide a link when an expansion card is removed.

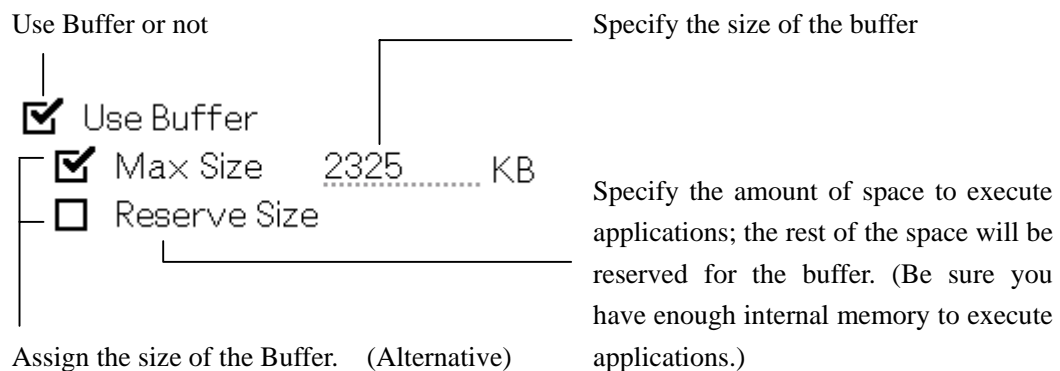
#### ☒ Hide link when card remove

If this option is checked, ZLink will hide the link automatically when the expansion card is removed.

With the expansion card uninstalled, the font under Link tab will become gray.

- Use Buffer

This option allows you to buffer a frequently used application stored on an expansion card. It also can extend the life of battery & expansion card. User can specific the size of buffer.

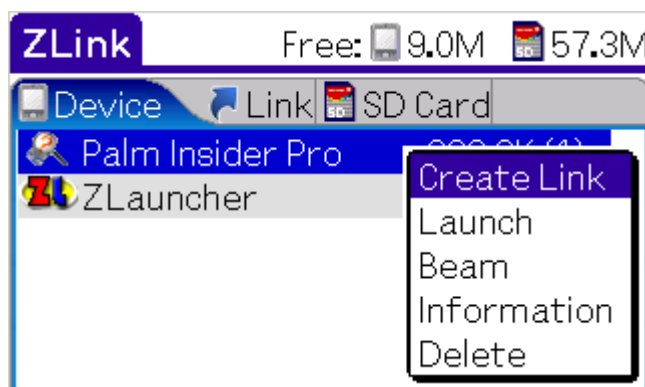


## How to navigate the User Interface

- Tap on an item with the stylus and edit it by selecting buttons on the Tool Bar.
- Fully support for a 5-way navigator and Jog Dial.
  - ◆ With a FocusRing supported device, you can cruise the tab and application/file/document in a list using the 5-way navigator/Jog Dial. Then press the center button to select the function.
  - ◆ With a device that does not support FocusRing, you can toggle the tab via by pressing the Left/Right button.
- ZLink support dragging and dropping an application/document/file to the Tool Bar button to edit the item.

- You can tap and hold on an application/document/file with the stylus and select options from the pop-up menu to edit the item.

Example:



The pop up menu including all options for this item.

Different items include different options.

- Quick Find: Input the initial letter of an item name in Graffiti to find the item.

### Create a link for an applications/documents in RAM

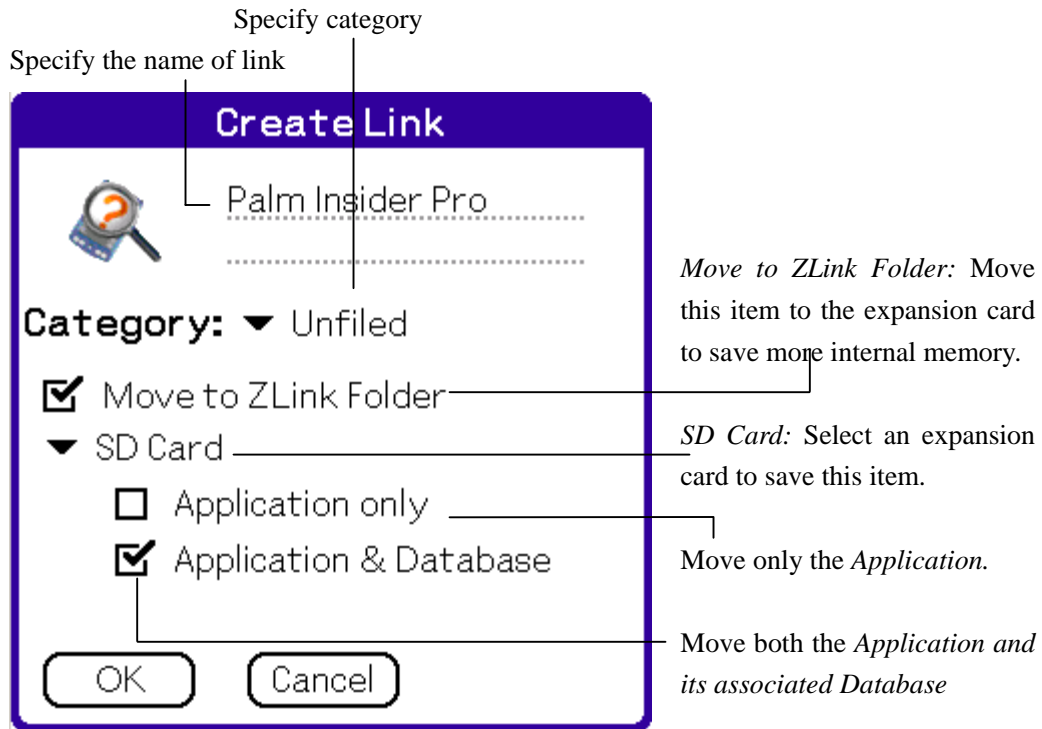
#### Step 1

On the *Device* tab, select an item and tap on the Create link button to create a link for this item.



**Step 2**

Specify the name and category of the created link.


**Step 3**

Tap the OK button to create the Link. You will see the progress indicator when you launch a link as well as information such as the file that is being imported or exported and the number of files.

**Note:**

- ◆ **You will receive a hint if the selected item cannot be moved.**
- ◆ **When you launch a link that was created by an application/database stored on an expansion card, ZLink will copy the corresponding application back to RAM and active it. It will not be activated directly from the expansion card.**
- ◆ **When you launch a link that was created by a related file on an expansion card, ZLink will open the file directly via the corresponding application.**
- ◆ **You can select category only existed in built-in launcher.**

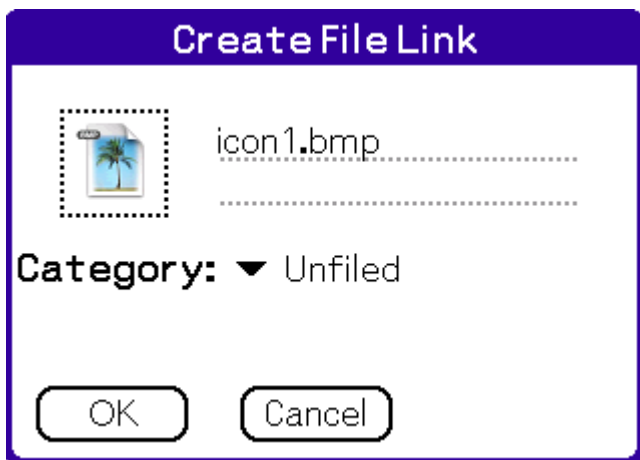
If you switch to the Link tab, you will see the created links. You can launch the link inside

**Create a link for an application/document on an expansion card****Step 1**

On the expansion card tab, select the item and tap on the Create link button on the Tool Bar.

**Step 2**

Specify a name for the link, icon and category



Specify a name for the link in the blank space

Tap on the icon rectangle and specify an icon for the link. ZLink supports Zlauncher Iconsets.

Select a category from the *Category* List.

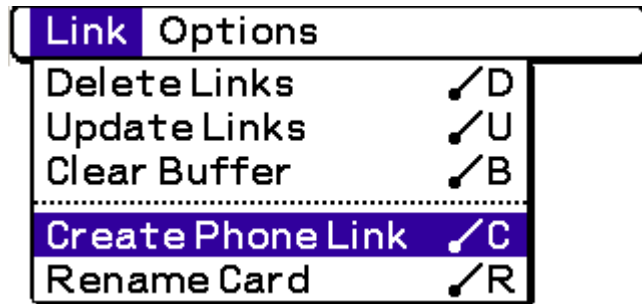
**Step 3**

Tap on the OK button to create the Link

**Create a phone link****Step 1**

Select *Create Phone Link* from the pull down menu.



**Step 2**

Select an icon for the Link.

A screenshot of a dialog box titled "Create Phone Link". The dialog box has a blue header bar. Below the header, there is a dashed box containing a blue icon of a person with a telephone handset. To the right of the icon is a text field labeled "Name" with a dotted line underneath it. Below the "Name" field is another text field labeled "Number:" with the value "12345678" and a dotted line underneath it. Below the "Number:" field is a dropdown menu labeled "Category:" with a downward arrow and the text "Unfiled". At the bottom of the dialog box are two buttons: "OK" and "Cancel".

Specify a name for the Link.

Enter a telephone number

Select a category

**Step 3**

Tap on OK to create the phone Link

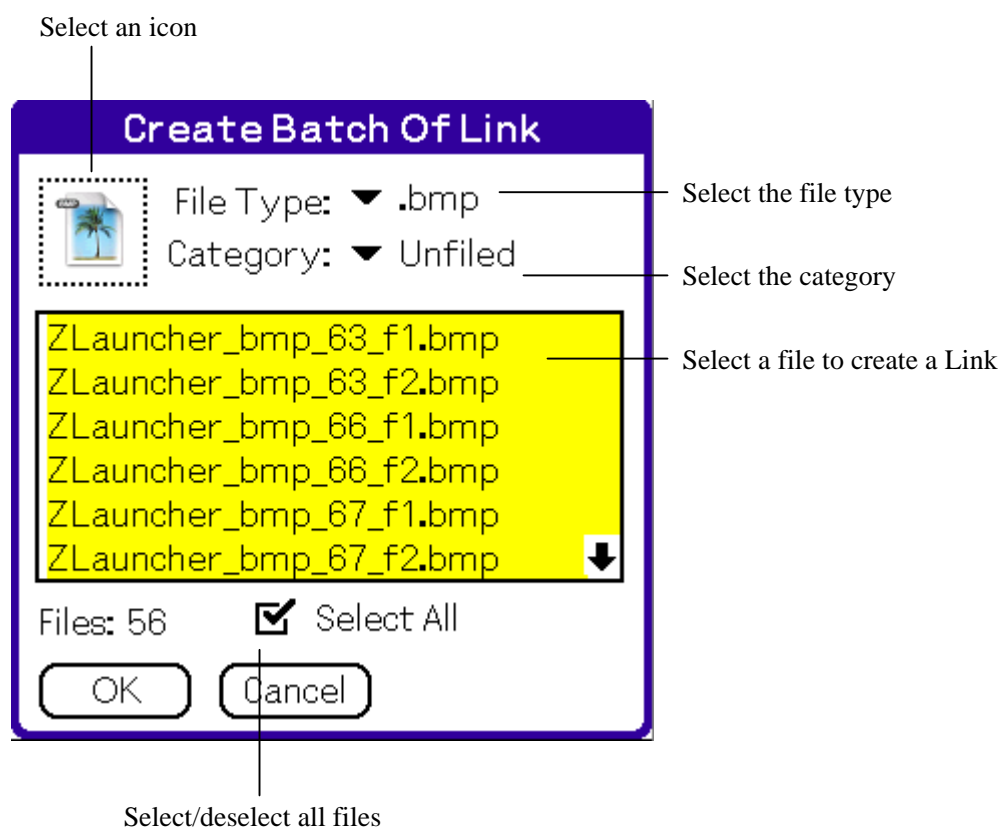
**Create a link for a batch of files on expansion card****Step 1**

On the Expansion card tab, you can select a specific expansion card if you have more than two expansion cards inserted. Tap on the arrow symbol and follow the expansion card icon to select the expansion card you want. Then select a directory and tap & hold on it to create links (ZLink will create a link for each item in this directory).



## Step 2

Select a file and specify an icon for the links.



**Step 3**

Tap on OK to create the link. The name of the Link will be same as the name of the original file.

**Note:**

- ◆ You can create a link only for specified file types.  
For more details, please refer to [what kind of application/document can create a Link](#).

**Additional functionality**

- What to do after an expansion card name has changed

If you change an expansion card name outside ZLink, select *Link - Update Link* from the drop down menu to update the link, since the Link is created by the expansion card name.

- The Preferences information of a link and its associated database


The Preferences information of a link and its associated database will be moved to the expansion card along with the Move operation. It will be copied to the Save Preference of the system when you launch the created link. It will be deleted from the Save Preference of the system once you exit the link.

- How to update application that moved to expansion card?

Application that has link created and stored on expansion card can follow below steps to update, if you need to install the upgrade version:

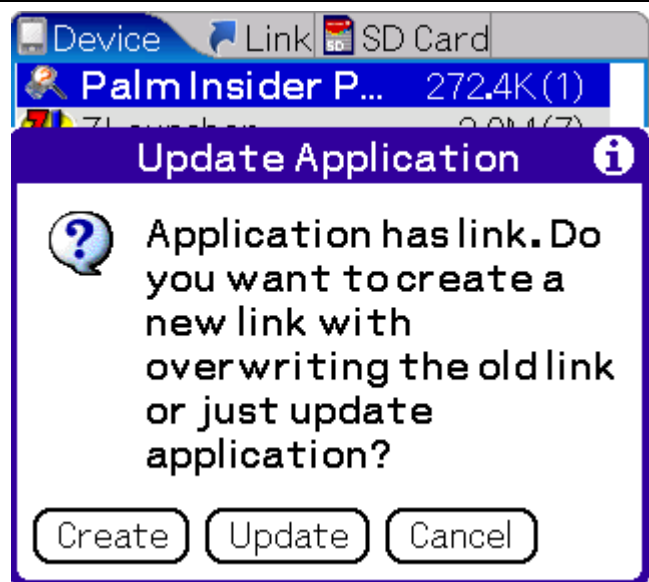
Step 1: Install the latest version of application on your device as usual.

Step 2: Open ZLink. On the Device tab, the title of new application will be show as

bold fonts. Select it and press Create Link  button.

Step 3: You can select those buttons from the pop up dialog.

- Create – Create a new link. New application will be moved to expansion card and cover the old one. The link of the old application will be covered by the new one. (With the new link created, the name and icon of the old link will change along with this operation.)
- Update – The new application will be move to expansion and cover the old one. The link created by the old application will change nothing. With pressing the Update button, you can select option Update related databases from the pop up dialog.



### Release History

1.0 -

First release was on 03/12/2006

### Disclaimer and Legal Stuff

This software is shareware. You may distribute it without modifications and not for profit-making purposes.

We take no responsibility for any loss of data or other failures.

Once you run this program, it is assumed that you have accepted the above terms.

**Please contact us if you want to modify ZLink or use it for commercial purposes.**

### Contact Us

If you have any problems with or advices about ZLink, please let us know. Thank you!

**Guangzhou Zhangzhe Technology Co., Ltd**

Website: <http://www.zztechs.com>

E-mail: [zlink@zztechs.com](mailto:zlink@zztechs.com)

Copyright (C) 1999-2006 by Guangzhou Zhangzhe Technology Co., Ltd., All rights reserved.