



Copyright 2004-2006 Paragon Software (Smart Handheld Devices Division)
Dolgoprudny, Moscow region, Russia

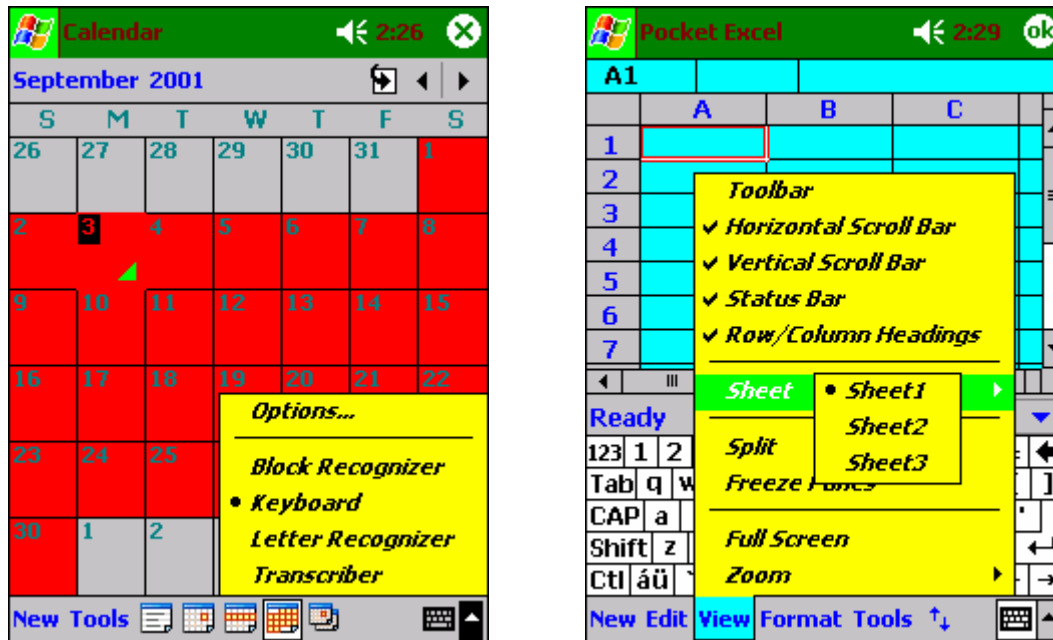
The CETuner utility for Windows Mobile 5.0 devices

Contents:

About the utility	2
Demo version limitations	2
Installation.....	2
How to use the utility.....	3
GUI (Graphical User Interface)	3
Size.....	4
Sip (Software Input Panel).....	4
Fonts.....	5
Theme	6
Utility menus.....	6
Uninstallation.....	6
Customer support service.....	7

About the utility

The CETuner utility is a perfect way to tune UI of your pocket device, as you want! CETuner allows you to change background of operating system windows, font size and font style, window sizes and many other parameters.



Set a large system font on your device to take care of your eyes while reading. Or set a small system font to show much more textual information on the screen.
The utility is designed for Windows Mobile 5.0 devices.

Demo version limitations

Using the demo version of the program you may change only three elements of the operating system in the Current configuration. Other configurations are not available in the demo version. Export and import options are not available too.

Installation

The CETuner installation is executed from a desktop computer. To install CETuner on your device please do the following:

1. Connect your pocket device with the desktop computer using ActiveSync.
2. On your desktop computer start the utility installation file CETuner.exe by double click on it.
3. Follow the instructions of the installation program.
4. After the end of the installation open Start > Programs. There you will see the icon of the utility.



How to use the utility

The utility allows you to tune UI (user interface) of your pocket device, as you want. All available settings are placed on 5 tabs:

GUI – Graphical User Interface

Size – sizes of UI elements

Sip – Software Input Panel

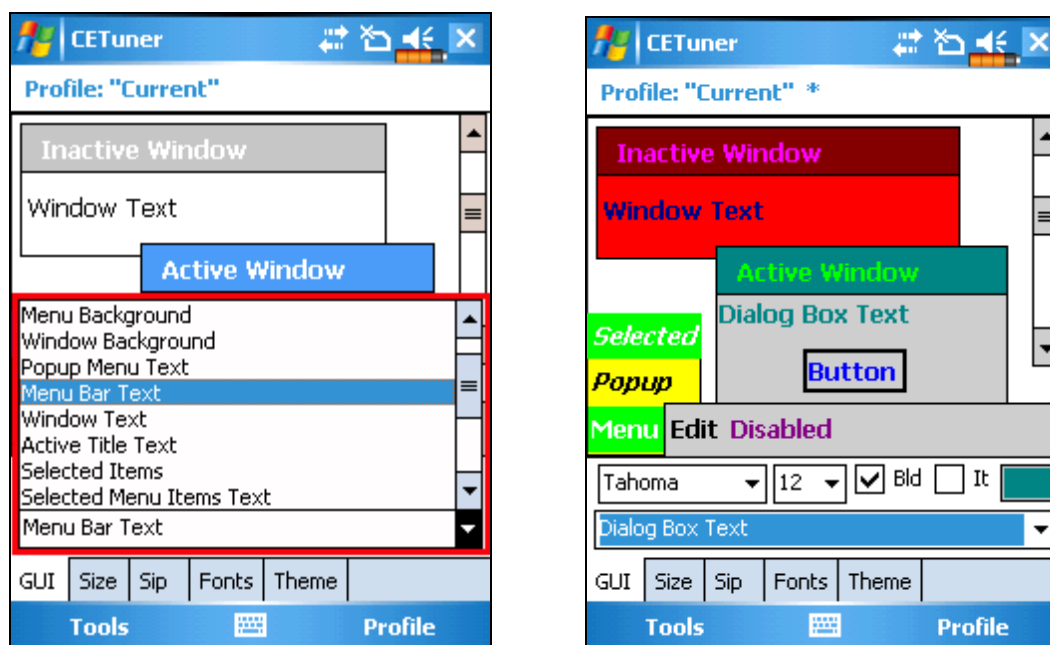
Fonts – fonts used by the operating system

Theme – settings of the Today screen.

Please find a detailed description of each tab below.

GUI (Graphical User Interface)

To change appearance of an UI element you should choose this element in a popup list and then set a new color or a new font for it.



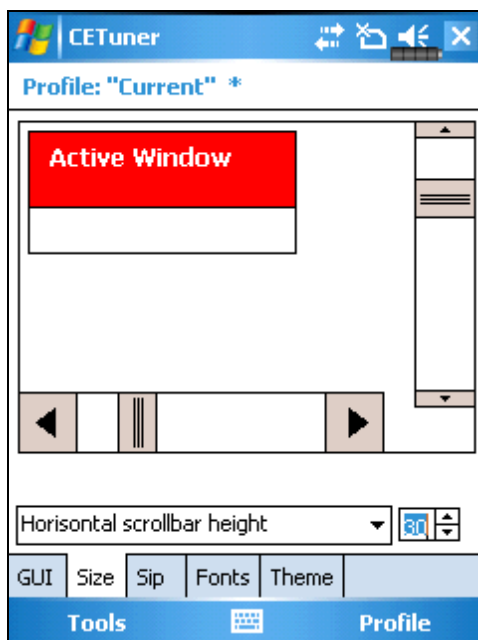
If you have made all the changes you wanted, open the Tools menu and choose the Apply item. After reset all the changes will take effect.

There are several standard configurations (color schemes) in the operating system. You can choose any of them without any changes or you can change any configuration at first and then apply it to your device. To choose a configuration you should open the Configuration menu. The list of available configurations will appear on the screen. Before the name of the current configuration you will see a tick. Choose a configuration. Title of the chosen configuration will be shown in title bar of the main window. If you make some changes in the configuration, you will see the * sign after the configuration name in the title bar. The changes made by you will take effect after you tap Tools > Apply.

Size

On the second tab you can change sizes of some UI elements: size of window title bar, sizes of vertical and horizontal scroll bars.

To make some changes you should choose an element from a popup list and change its size (the edit field on the right of the popup list). The changes made by you will take effect after you tap Tools > Apply.

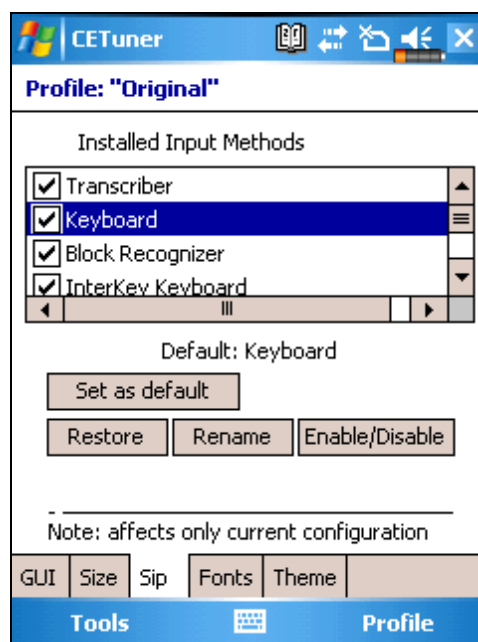
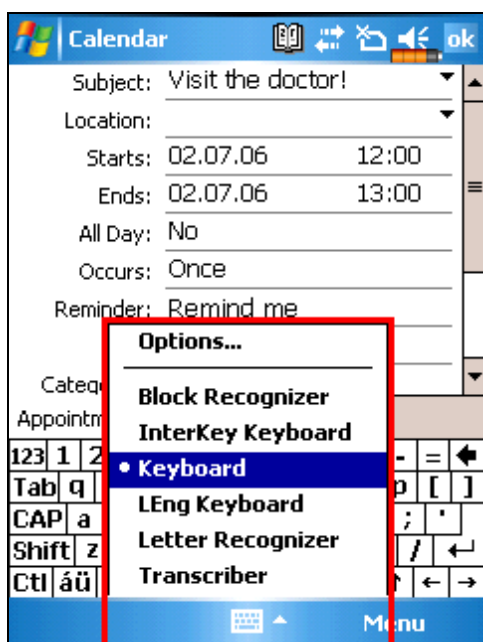


Sip (Software Input Panel)

There are some input methods to input information on a mobile device: Block Recognizer, Letter Recognizer, Transcriber, keyboard and input methods corresponding to additionally installed software (for example, LEng, InterKey, InterPen).

You can change settings of the Input Method panel on the Sip tab:

- Set exactly which input methods should be shown in the Input Method panel (put a tick before an input method you want to be shown in the Input Method panel)



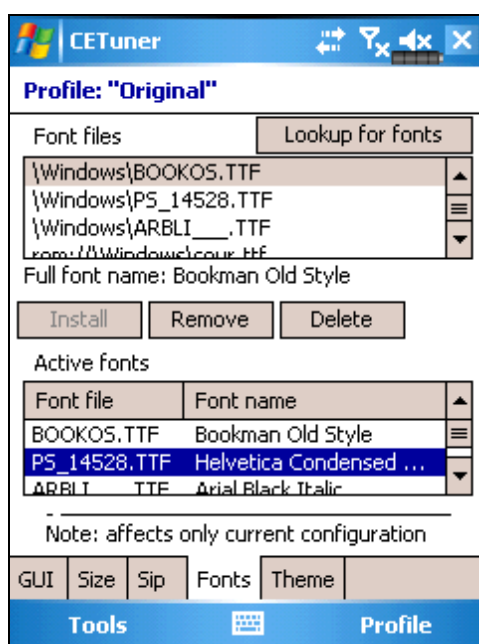
- Set which input method should be used as default (select an input method you want to be used as default and tap the Set as default button)

ATTENTION: if you have changed the default input method (keyboard is the default input method in the operating system), some applications may begin working incorrectly!

- Rename any of available input methods.

The changes made by you will take effect after you tap Tools > Apply.

Fonts



The elements on the Fonts tab have the following functionality:

In the Font files frame you can see the list of all font files found in your device. You can also see where every font file is stored – ROM, Flash Card and so on. If you tap the button Look for fonts, the CETuner program will search for font files stored anywhere on your device, in other words the list in the Font files frame will be refreshed. There is the Full font name field under the Font files frame. In this field you can read full name of the font selected in the Font files frame.

In the Active fonts frame you can see font files that are stored in the Windows folder. These font files may be used by the operating system. To make any of available fonts active, select it in the Font files frame and tap the Install button. The selected font file will be moved to the Windows folder and the operating system will be able to use it.

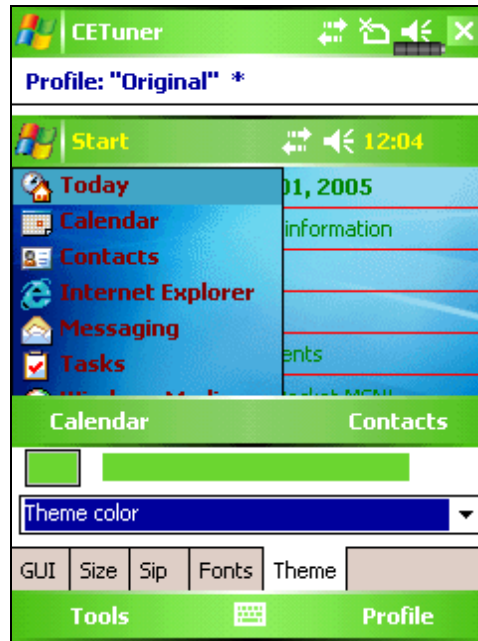
If you want to remove a font from the active fonts list, select it in the Active fonts frame and the Remove button. The selected font file will be moved to a special folder of CETuner.

If you want to completely delete a font, select it in the active fonts list and tap the Delete button.

The changes made by you will take effect after you tap Tools > Apply. After reset you will be able to use the new font you installed while working with text.

Theme

On the Theme tab you can tune the appearance of the Today screen: choose elements of the screen from a popup list and set new colors for them. The changes made by you will take effect after you tap Tools > Apply.



Utility menus

There are two menus in CETuner: Tools and Configuration. The Configuration menu allows you to look through all available configurations. The Tools menu allows you to save, delete, and rename any configuration. You can also import any configuration into a file (for example, to transfer the configuration to another device) or export configuration from a file (use the menu items Import and Export).

ATTENTION: Settings from the tabs Sip and Fonts cannot be saved in any configuration or imported/exported in a file. If necessary you should do all the Sip and Fonts settings on every separate device.

Uninstallation

ATTENTION: If you remove the program, the configuration you had before the uninstallation will remain on your device. Therefore if you want to return to the original state of your device after the uninstallation, you should at first choose the Original configuration and apply it to your device.

To completely uninstall CETuner from your device, tap Start > System > Add/Remove Programs. Then choose the CETuner line and tap the Remove button.

Customer support service

Finally Support knowledge Base is available for our customers! You can find there detailed answers for frequently asked questions about all programs of Paragon Software (SHDD) (Language Extender, the SlovoEd and MultiLex dictionaries, the InterKey utility, the Can't Stop Solitaires Collection game and so on). Visit Support Knowledge Base while you are waiting for a reply from customer support service or visit it before writing to support team. We suppose you will find there the necessary information on your problem.

Welcome to Support Knowledge Base!

<http://support.penreader.com>

We also invite you to visit our site <http://pocket-pc-software.penreader.com> . You can find here information about the other Pocket PC software and download free demo-versions.

Customer Support Service:

Tel: +7 (495) 789-67-17

(Working time of customer support service line is 11.30 - 19.00 Moscow time on weekdays)

Dear customers!

We will be glad to receive your offers and comments.

They help us to improve our programs quality.

Thank you very much in advance for your comments and ideas!



**Copyright 2004-2006 Paragon Software (Smart Handheld Devices Division)
Dolgoprudny, Moscow region, Russia**