

MxList

for Pocket PC
Version 1.2

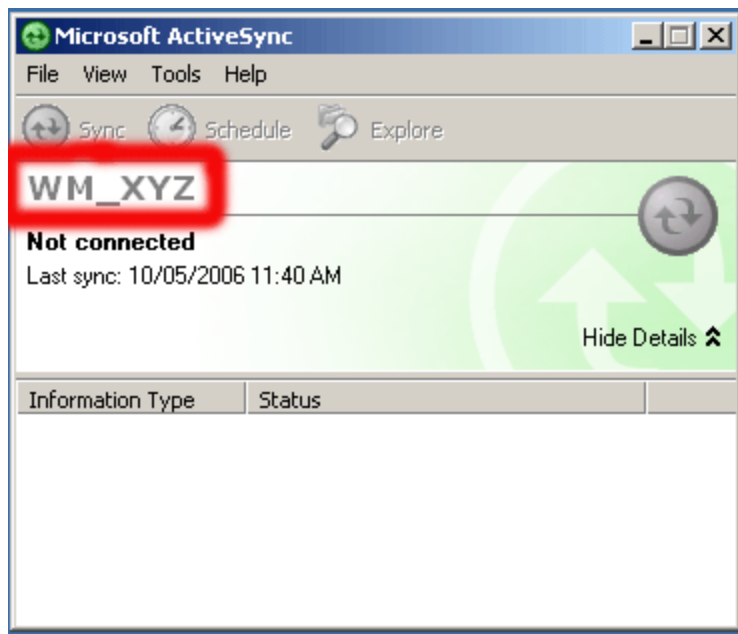
User Guide

Product of :-

3GR Technologies

For Installation information & Sales/Support contacts refer the Read Me file.

Registration



In the above example 'WM_XYZ' is the ActiveSync ID & the Serial # is 1210016331668308934.

- ? [Introduction](#)
- ? [List of features](#)
- ? [About MxList](#)

Introduction

MxList is especially useful for steps in a process you do frequently. Use this as any kind of list ex: instructions, tasks, shopping etc. Special features for Shopping list create another useful way to use MxList.

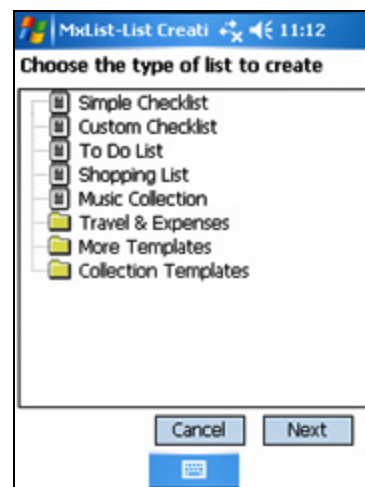
List of Features

Making and Modifying Lists:

Once you've created your list the list properties window will open to modify your list. Select appropriate one from it and press Next to move on. The column list will display and you can insert new column, rename it and also you can change the order of the column in this wizard. Set up the columns which you want to use.

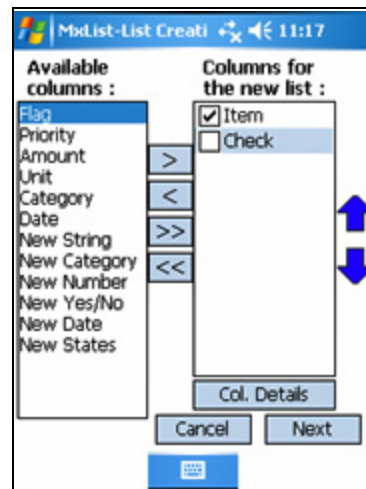
Wizard – Step 1

When you create a New List, a New List Wizard will appear on your screen. This Wizard allows you to select a type of list you want to make from the list of Templates.



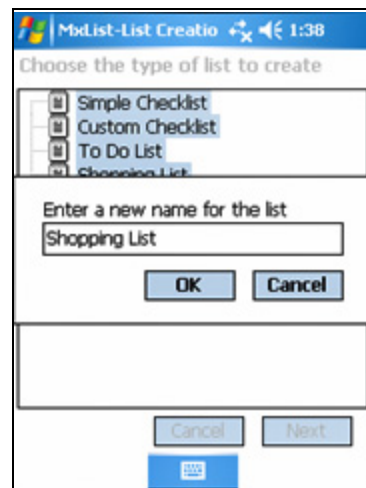
Wizard – Step 2

This allows you to choose which columns will be displayed for this list. Choose Columns from Available. The order of the column determines that it will appear when the list is displayed.



Wizard – Step 3

Type a name for the List you have created and tap on the OK button.



Flag column check box will be used for Shopping List. This function is useful for certain items that you need to display while shopping. Once you've entered your items you flag that item whenever you think of something to add on that list. You could make a list of all places where you want to stop and shop. Then, when you go to the store, you've shopping list which you've decided earlier. Whenever you are leaving for work, you can easily see the places where you want to shop. When you Sort the list item order, check order list to retain it. If this is not checked the order will be changed to new sorted order when you sort. You can change the order of the column in sort list.

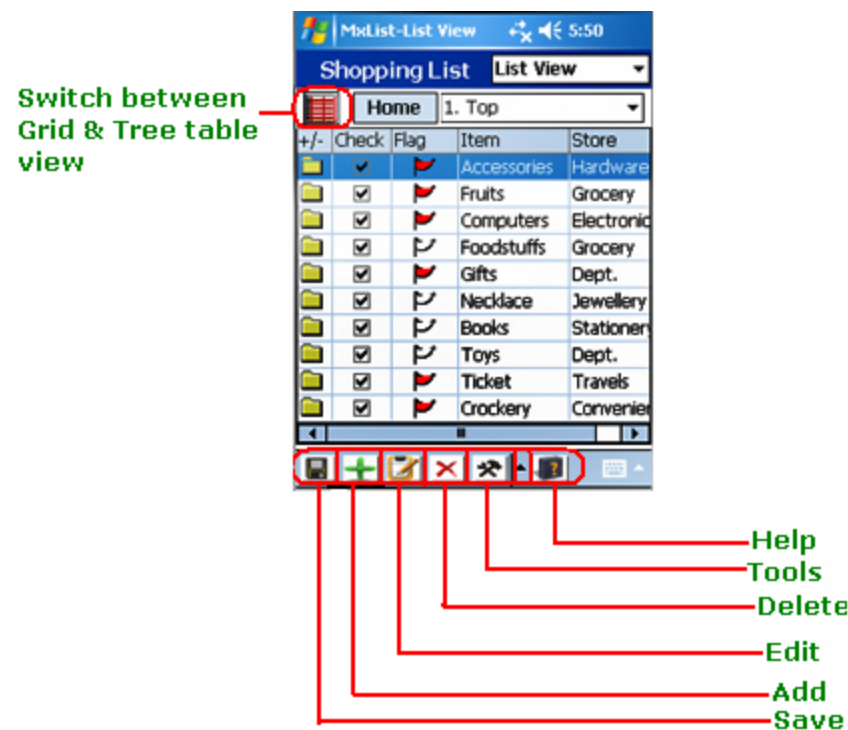
List Of Columns:

| o | Column Name | Column Type |
|----------|--------------------|--------------------|
| 1 | CHECK | YES/NO |
| 2 | FLAG | IMAGE |
| 3 | PRIORITY | INTEGER |
| 4 | AMOUNT | CURRENCY |
| 5 | UNIT | CATEGORY |
| 6 | ITEM | STRING |
| 7 | CATEGORY | CATEGORY |
| 8 | DATE | DATE |
| 9 | DUE | DATE |
| 10 | STORE | CATEGORY |
| 11 | TITLE | STRING |
| 12 | ARTIST | CATEGORY |
| 13 | CAT | CATEGORY |
| 14 | FORMAT | CATEGORY |
| 15 | NEED | YES/NO |
| 16 | EXPENSES | CATEGORY |
| 17 | AMOUNT | CURRENCY |
| 18 | PAYMT. | CATEGORY |
| 19 | CAT. | CATEGORY |
| 20 | FLIGHT NO. | STRING |
| 21 | TICKETS | STATE |
| 22 | TOPIC | STRING |
| 23 | ACTION | STRING |
| 24 | WHO | CATEGORY |
| 25 | WEB | STRING |

| No | Column Name | Column Type |
|-----------|--------------------|--------------------|
| 26 | END | DATE |
| 27 | CONTACT | CATEGORY |
| 28 | PAID | YES/NO |
| 29 | SENT | YES/NO |
| 30 | FEEDBACK | STATE |
| 31 | WHERE | CATEGORY |
| 32 | INDEX | NUMBER |
| 33 | GENRE | CATEGORY |
| 34 | YEAR | CATEGORY |
| 35 | LABEL | CATEGORY |
| 36 | CATALOG | STRING |
| 37 | HAVE | YES/NO |
| 38 | TRACKS | NUMBER |
| 39 | REGION | CATEGORY |
| 40 | DIRECTOR | CATEGORY |
| 41 | RUNTIME | STRING |
| 42 | AUTHOR | CATEGORY |
| 43 | ISBN | STRING |
| 44 | PUBLISHER | CATEGORY |
| 45 | PLATFORM | CATEGORY |
| 46 | SERIES | CATEGORY |
| 47 | ISSUE NUMBER | NUMBER |
| 48 | ISSUE EXTENSION | STRING |
| 49 | CONDITION | CATEGORY |
| 50 | VALUE | STRING |

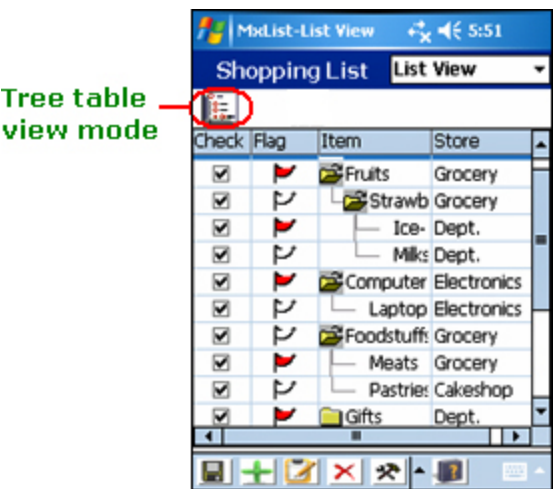
You can edit an existing column's properties by selecting the column. All columns have a Name property, so the column properties will always includes a Name field. The window you can see will depend on the type of column. MxList predefines the following columns and its types:

List View Mode



In List View you can insert data by selecting New on the bottom of the screen. You can add information to your List and when you select the data which you have inserted it will become an Parent item to your List mode and with changes in an indent level, and the new information which you have entered will become Child of that Parent Item.

Tree Table View Mode



When you tap on Toggle button which appears on left side on the screen, you can see the “Folder Icon” sign next to the text which you have entered. When you tap on “+” sign you can see the Tree Table View on the screen. When you again tap on Toggle button, the Tree Table View will collapse to List View.

Tree View Mode



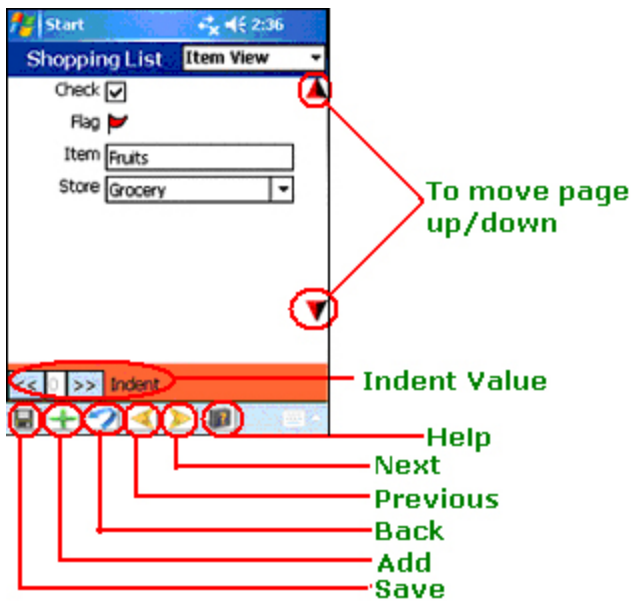
This window displays **Parent/Child** relationship.

OR

You can say it's an **Branch & Leaves** relationship. When you've completed with the Item View Window information, you can see those information which have been changed with the changes in Indented level in this mode. With an increase or decrease of an indented level you can maintain Parent/Child (Or to say Branch/Leaves) relationship.

Even Child can become its own Parent when it creates new information within. If you've more than one level of indentation in your list, a parent column will be created for each level. i.e. Parent 1, Parent 2 and so on. The purpose of the parent column is to hold the necessary information for restoring the original hierarchy.

Item View Window:

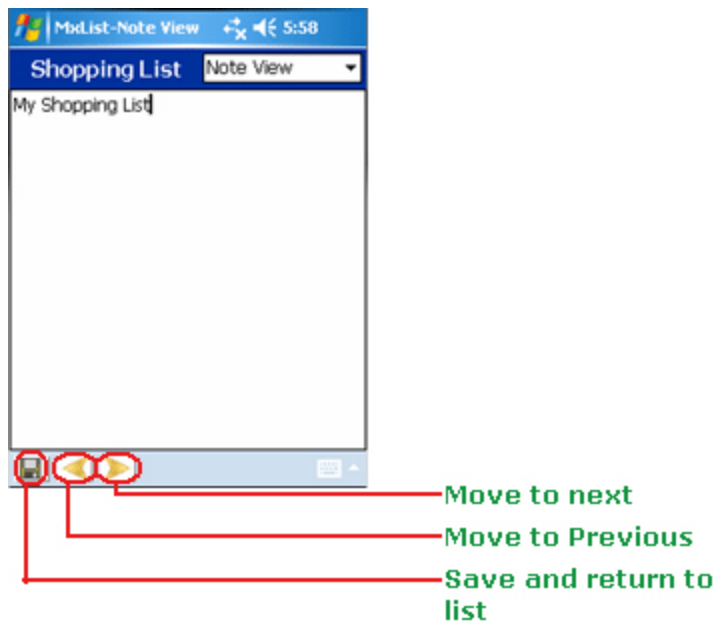


Before getting started with Item View Mode select the columns which you want in your list. By using Item View Window, you can add items to your list. You can insert information for more than one new list items. You can immediately start adding new information into field.

To create hierarchy of items in your list you can use indented items. This hierarchy of items only displays the columns which you've configured to show in your list. This window also allows you to change an item's indent level. Indent level of "Zero" determines that item is not indented. An indented item gives it a Parent/Child relationship to the item above it. The Parent item will be preceded by "+" sign and the Child item will be preceded by sign.

When you are entering a new item's information, tap Done to save the item. If you tap on New Item, the item will be saved but the item view mode will remain open and all fields will be cleared. This allows you add another new information. You can see all the columns which you've created while inserting information in Item View Window will also appears when you display List View Mode. Item View makes viewing and editing your list items more convenient.

Note View



This let you add additional information to a list item. Use Note View for instructions or for details about an item.

List of Columns



Use the arrow buttons to move the columns up & down for changing the order they are displayed.

Duplicate Items



Select any item in the list, then tap on Duplicate Items and you will have same copy of that Item.

Delete Checked Items



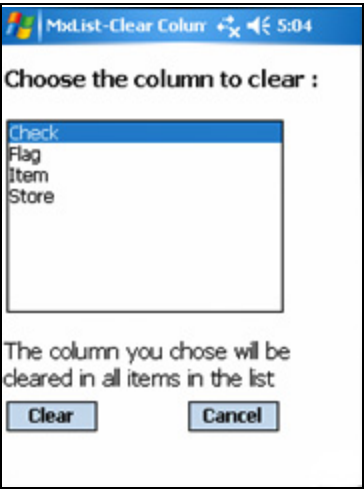
This will Delete all the checked items in the list which've predefined Yes/No column. If you've checked an Parent item to Delete, Child item will also Delete simultaneously.

Delete Selected Items



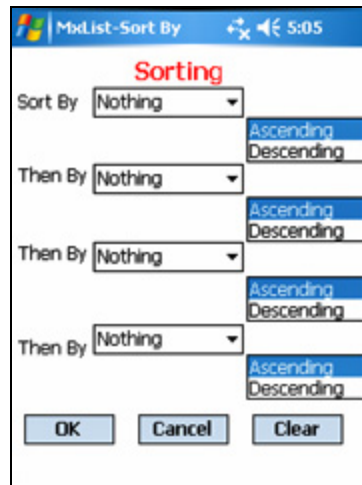
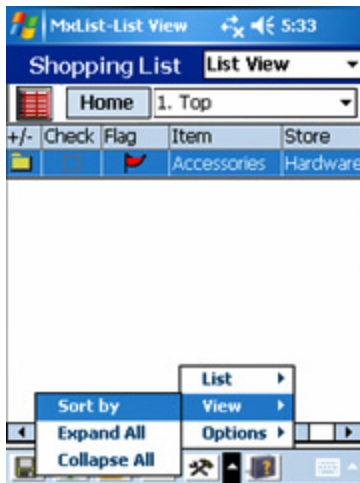
This will Delete only those items which've selected to remove from the list. If you have selected an Parent item to Delete, Child item will also be Deleted.

Clear Columns



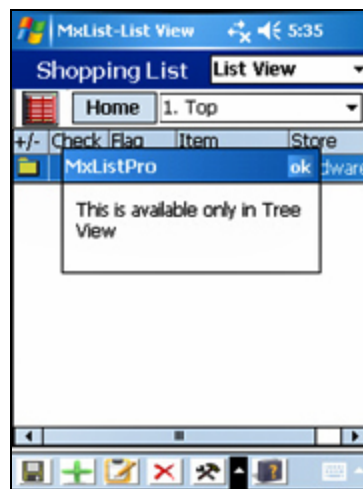
Columns you choose will be set to default in all the records in the list.

Sorting



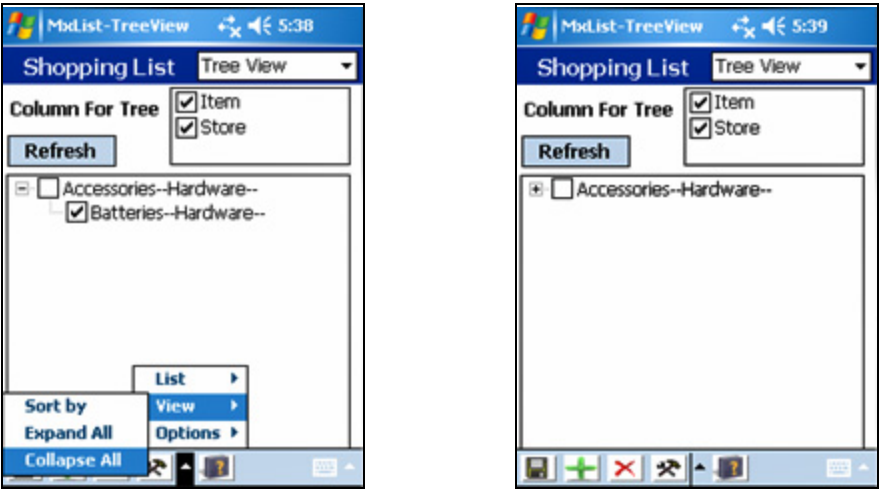
It allows you to choose the column or columns to sort by. You can choose only 3 columns to sort by and you can sort by each column in Ascending or Descending order. When you sort a list in Ascending or Descending order, Child item of that selected item will follow their Parent item to its New position in the list. This Child item will be sorted within the newly positioned Parent item.

Expand All



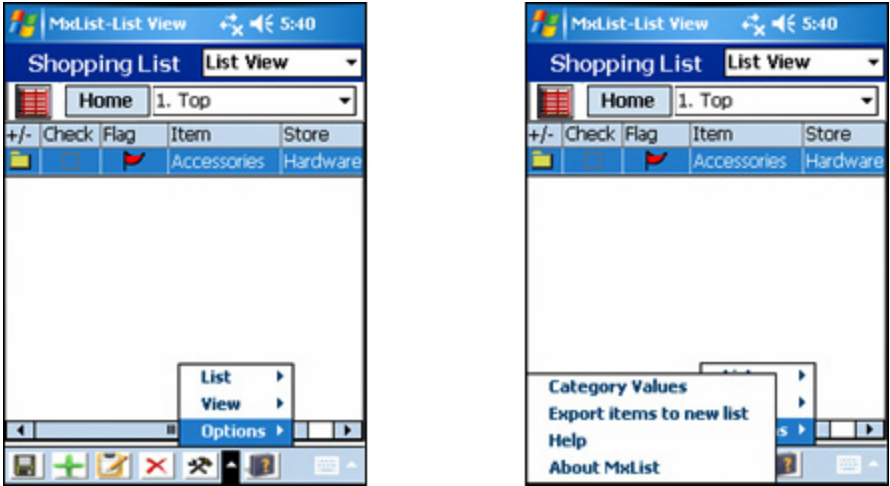
This function you can only use in Tree View Mode. When you select Tree View to display the items it will only displays Parent items on screen. To see the Tree View, select Expand All.

Collapse All

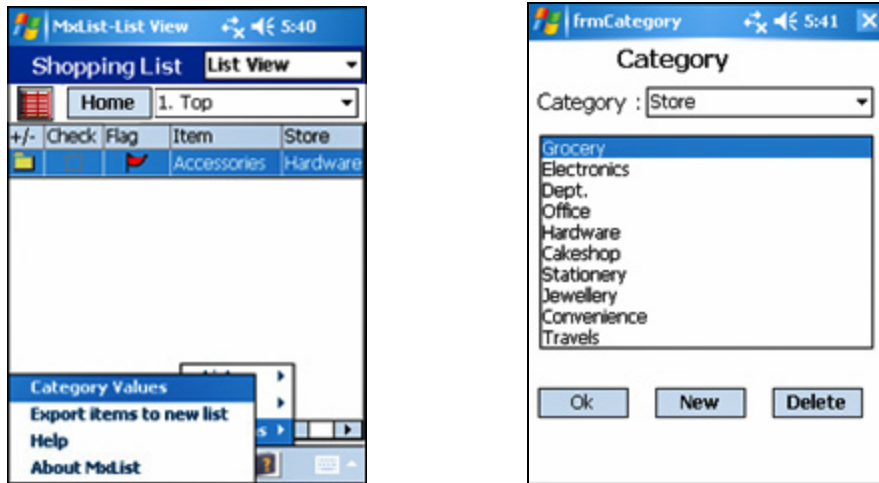


This function you can use after using the function of Expand All. By tapping on Collapse All the Tree View will be collapsed.

Options

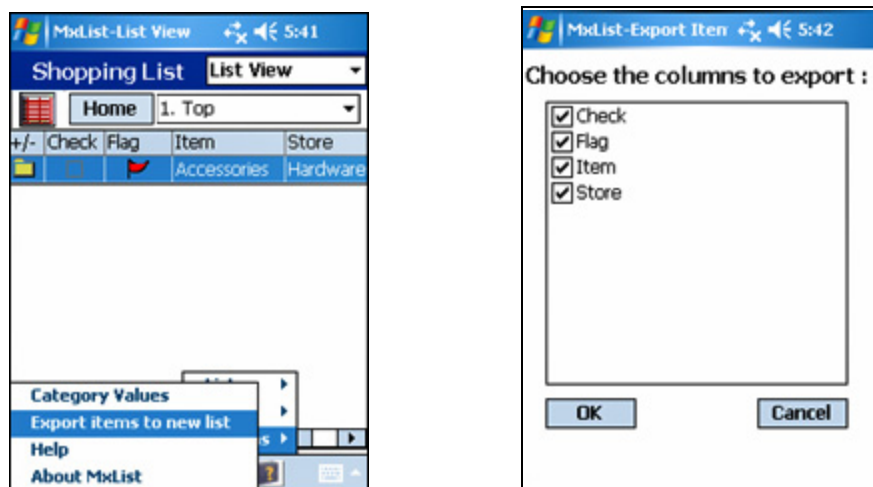


Category Values



By default, all new values entered for a category are added to that column's list of category values. You can edit each category list of values if you want to add or delete values you don't need. To do this, select category column and tap on New to edit new values in it.

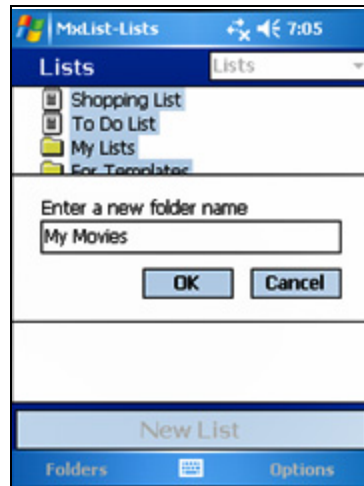
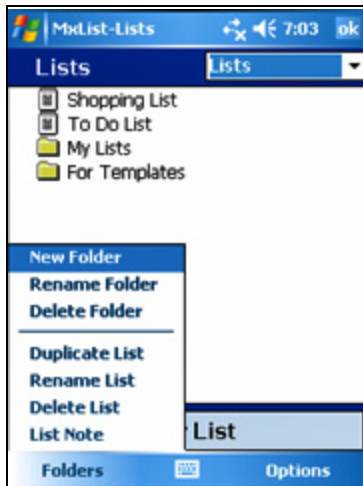
Export Items to New List:



When you select items to Export it to the New list, it will ask you to select the columns which you want to Export. Select the columns and when you tap on Export Items to New list, it will ask you to enter New Name for the list.

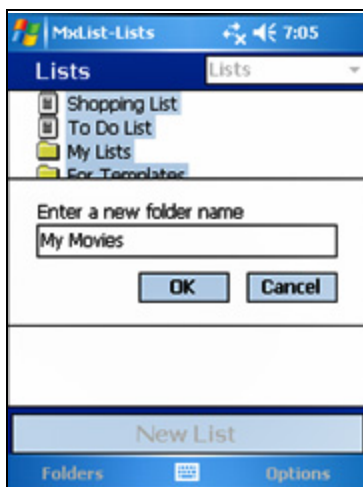
Folders

New Folder



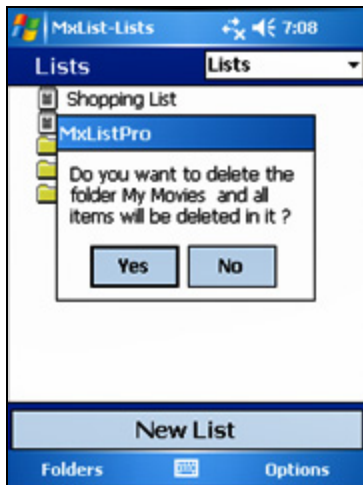
To create a Folder, select New Folder from Folder menu. When you tap on New Folder, it'll ask you to enter a New Folder Name. By creating Folders you can group of lists which are related together.

Rename Folder



By deleting the existing name of the Folder, you can Rename the Folder's Name.

Delete Folder



By tapping on Delete Folder, You can delete the entire Folder which you don't need.

Duplicate List

When you tap on Duplicate List, it will ask you to enter a new list name. You can enter the same name of list and you will get the Duplicate List.

Rename List

When you tap on Rename List it will ask you to enter a new List name. Enter new list name.

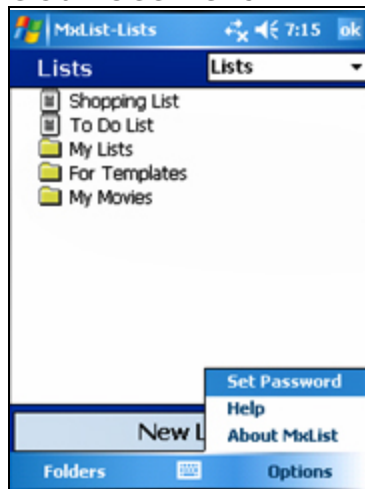
List Note



You can maintain your information in detail in List note.

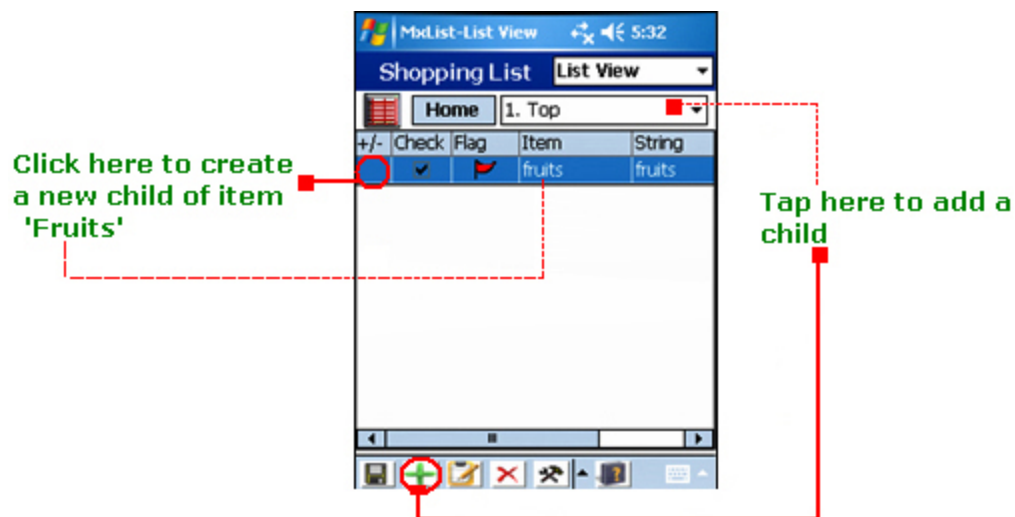
Options

Set Password



You can set password for your list. When you tap on Set Password it will ask you to Enter password and again re-confirm the Password. This helps you to hide your details of the existing List.

Add a New Child



Create Templates from List

First select the list which you want in Templates. You can create New Name for the Templates.