

2dial Voice Plugin User-Manual

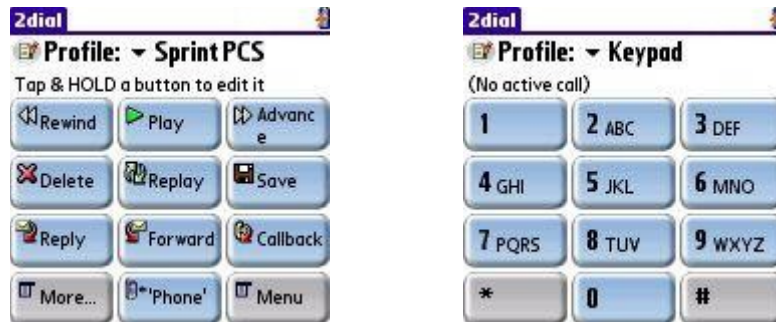
General

2dial is built to automate handling of calls to/from automated phone systems, such as IVRs, voicemail systems, etc.

It displays a screen of 12 buttons, which you can program with various commands (digit sequences) and/or PIN numbers, etc.

So when you are on a call, you do not need to listen to lengthy voice menus, or remember the different touch tone presses required for operations, but in stead visually see on the screen of your Treo the various commands, and just tap the button to execute them.

This user-manual assumes you have read the **2dial User-Manual** and understand the way to operate 2dial.



Voice-It plugin

Starting at version 1.07 of 2dial, we have added **voice command** capabilities into the application, using the **Voice-It** libraries. When enabled, you can train voice commands for every button in a profile, so that you can activate the various commands via your microphone (either built-in, or the headset).

Further more – this feature can be active even not while in a call, so you can actually use 2dial to do **voice-dialing**. You can set 12 commands per profile, so you can either voice-dial 12 favorite contacts (or you can use the default profile to launch 12 sub-categories like "Family", "Work" ... - allowing voice-dialing of 144 contacts).

Whenever voice detection is activated - either manually by pressing the Treo side button, or the headset button, or automatically when a call is connected and a 2dial profile is auto-activated – you will hear a prompt "Please say your command". Then you can simply say the voice prompt you trained any button for, and that button will be selected.

Installing & registering

To enable the voice command feature, you need to install the **Voice-It** libraries. To do this – install the three (3) files included in the "VoiceIt" sub-directory of the ZIP file onto your device. The files are: VoiceLib.prc, VoiceLibFilter.prc and VoiceLibSupport.prc .

Important: using Voice-It libraries requires purchasing an additional license.

Once you install the library files, you will see a new option added to the main menu: "**Voice-It preferences...**". Select that option to configure and register the voice plugin:

To register the voice plugin, you should purchase a license. Send us the string displayed at the S/N field, and you will receive a registration code. Enter this at the "Code" field.

Note: Once you install the library files, they will be fully functional for 10 days, so you can evaluate the use of the voice-command feature before purchasing a license.

Configuration



You can also use the "Voice-It preferences" screen to set the voice detection sensitivity, and the volume used when recording your commands while training them.

Other configuration options are added to the "General preferences" page:



"Start with headset button" will launch 2dial when you press the headset (either wired or Bluetooth) button. 2Dial will be launched with the default profile, and voice-command detection will automatically turn on.

"Start with side button" will launch 2dial when you press and HOLD the Treo 650 side button (again – voice-command detection will automatically turn on). If you are already in 2dial – pressing the side button will toggle voice-command detection on/off.

"Talk to me" will cause 2dial to play prompts via the speakers, instructing you what to do next. You can also set the volume of these prompts.

Per-profile configuration

In 2dial's profile configuration dialog, there is a 3rd tab for voice-detection:

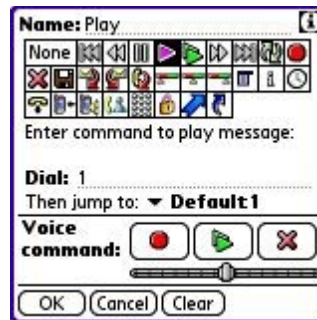


Use this tab to enable/disable voice detection for the specific profile.

Important: If voice detection is enables for a profile, an option is added at the bottom of the middle tab ("Auto-activate" tab) - "Start voice rec. after X sec." - check this option on to automatically start voice-commands detection X seconds after a profile is launched for a connected call by 2dial.

Per-button configuration - training

When voice-detection is enabled for a profile, you can train a voice command for every button in the profile. To do that, three buttons are added to every button configuration dialog:



Select the **Record** button to record a voice command. Once done, you can select the **Play** button to hear your recording, and **Delete** to erase it.

To increase the accuracy of the voice-command recognition, you can record multiple passes of the same command for every button. When you select **Play**, you will see all the recordings you made, and will be able to playback them.

You can change the recording volume with the slider below.