

AccessPlus™ for the Palm OS

Version 2.0

Users Guide



Table of Contents

1	INTRODUCTION	3
2	INSTALLATION	5
3	USER INTERFACE	6
3.1	Icon Definitions	6
3.2	Database Management	7
3.2.1	Database (Home) View	7
3.2.2	Database Properties	8
3.2.3	Search in a Database	9
3.3	Table Management	10
3.3.1	Table View	10
3.3.2	Table Properties	11
3.3.3	Table Design	12
3.3.4	Table Design Details	13
3.3.5	List Design	14
3.3.6	Calculation Design	15
3.3.7	Condition Design	16
3.3.8	LoopUp Design	17
3.3.9	Query Design	18
3.4	Record Management.....	19
3.4.1	Record List View	19
3.4.2	Record Edit View	21
3.5	Preferences.....	22
3.6	Register AccessPlus.....	23
3.7	About AccessPlus	24
4	ACCESSPLUS CONDUIT	25
5	HOW TO CONTACT US	26

1 Introduction

AccessPlus				All
Icon	Database Name	Tab.	rw	
	OSCAR_AWARDED_MOVI.	1	rw	
	INTERNET_ACRONYMS	1	rw	
	FORTUNE_500_COMPAN.	1	rw	
	ANNIVERSARY_GIFTS	1	rw	
	AMERICAN_AREATELCODE	1	rw	
	AIRLINEPHONE	1	rw	
	US_PRESDENTS	1	rw	

Record List		No Query
ACRON..↑	Means	
AAMOF	As A Matter Of Fact	
ABT	About	
ADN	Any Day Now	
AFAIC	As Far As I'm Concerned	
AFAICT	As Far As I Can Tell	
AFAIK	As Far As I Know	
AFAYC	As Far As You're Concerned	
AFAYK	As Far As You Know	

AccessPlus™ is a relational database management application designed for use on Palm OS devices. With AccessPlus™, you can create and manage various databases, and query different data records. It helps users to track and manage a large amount of data. AccessPlus™ also allows users to synchronize user data directly with Microsoft Excel, Microsoft Access, and other ODBC and SQL data sources.

Major Features of AccessPlus:

- AccessPlus allows you to create your own databases, tables, fields, and records. The following database operations are supported: categorization, open, copy, search, add, delete, edit, beam.
- AccessPlus allows you to create multiple tables within each database. The following table operations are supported: categorization, open, add, delete, edit.
- AccessPlus supports the following field types: Int16, UInt16, Int32, UInt32, Float, Double, Date, Time, DateTime, Text, Memo, Icon, Primary Key, Checkbox, List, BLOB (binary large object), Image, Calculation, Conditional, LookUp.
- AccessPlus allows you to view all or some of the records in each table. It allows you to define multiple queries to select desired records for display. Sorting of the search result is also supported. Each query can be defined using a SQL statement or by using a query editor.
- AccessPlus allows you to add, view, and edit each record. You can sort, view and edit each field in the table. You can also use the title bar to drag and adjust the width of each column, to change sort direction, or to customize column content. Both horizontal and vertical slider bar are supported for easy viewing for large tables.
- AccessPlus supports relational design: One table can be joined to another to display related information. This is supported by using Foreign Keys and Database LookUp fields.
- AccessPlus supports Expression and Conditional Expression fields for simple calculation using record values or constants.
- AccessPlus provides user-friendly screens to reduce graffiti entry to a minimum: Date Selector, Time Selector, Expression Builder, Query Designer, Table Designer, Record Editor and more.
- AccessPlus provides password protection to secure sensitive data.
- AccessPlus supports two-way synchronization with Microsoft Access. Support for other ODBC and SQL data sources will be added in the future.
- AccessPlus supports storing the databases in both internal memory and external VFS cards.
- AccessPlus supports Palm and Sony high-density displays and high-resolution fonts and bitmaps. AccessPlus supports Dynamic Input Area and landscape and portrait display modes used by Palm Tungsten T3/T5 and Sony UX 40/50.

AccessPlus is shareware and it is priced at \$19.95 per copy. You can try it for free, but if you decide to keep it, you must purchase a registration code from us. Your evaluation license will be valid for 15 days. If you decide to keep AccessPlus after the evaluation license is expired you must purchase a registration code from us. The registration code would unlock your software and enable it for unlimited use. Registered users will receive free software upgrades from us for one year. We also provide registered users free technical support for one year. You can order AccessPlus from our web site at:

<http://www.smartcell.com>

2 Installation

Follow the steps below to install AccessPlus on PC:

- First make sure that you have .NET Framework 1.1 on your desktop. You can check to see if you already have the .NET Framework installed by clicking Start on your Windows desktop, selecting Control Panel, and then double-clicking the Add or Remove Programs icon. When that window appears, scroll through the list of applications. If you see Microsoft .NET Framework 1.1 listed, the latest version is already installed and you do not need to install it again. If you don't have it installed, you can use Microsoft Window Update to install it:

<http://v4.windowsupdate.microsoft.com/en/default.asp>

- Uncompress all files in the ZIP file containing AccessPlus to a folder on your PC.
- Open folder "PC" and double click on the executable file. This will start the installation process for AccessPlus. Please follow the instructions given by the installation program to complete the installation process.
- If you have any problem during HotSync, you can uninstall AccessPlus and remove all files under the following folder (or the folder you installed it to)

C:\Program Files\SmartCell Technology\AccessPlus\

Then reinstall AccessPlus following the steps above.

Follow the steps below to install AccessPlus on Macintosh:

- Uncompress all files in the ZIP file containing AccessPlus to a folder on your Macintosh.
- Open folder "Mac" and use your Palm Desktop Install Tool to install AccessPlus.prc, MathLib.prc, and the sample databases.
- Perform a HotSync operation to transfer the AccessPlus application and the sample databases (PDB files) to your Palm OS device.

If you are installing AccessPlus to a Palm Tungsten T3 device, you also need to install the following PRC files:

<http://www.smartcell.com/Product/AccessPlus/AppSlipRotate.prc>

<http://www.smartcell.com/Product/AccessPlus/StatusBarLib.prc>

3 User Interface

3.1 Icon Definitions

Icon	Name	Purpose
	Query	View or Edit Query
	Edit	Edit an item (database, table, record, etc.)
	Open	Open an item (database, table, record, etc.)
	Delete	Delete an item (database, table, record, etc.)
	Beam	Beam a database
	New	Create a new item (database, table, record, etc.)
	Copy	Copy an item (database, table, record, etc.)
	Cut	Cut an item (database, table, record, etc.)
	Paste	Paste an item (database, table, record, etc.)
	Home	Return to the home (database) view
	Return	Return to the last window
	Properties	Properties of an item (database, table, record, etc.)
	First	Go to the first item in the list
	Last	Go to the last item in the list
	Previous	Go to the previous item in the list
	Next	Go to the next item in the list
	Find	Search for an item
	Find Next	Continue the current search
	OK	OK to perform the operation
	Cancel	Cancel the operation
	Stop	Stop the current operation

3.2 Database Management

3.2.1 Database (Home) View



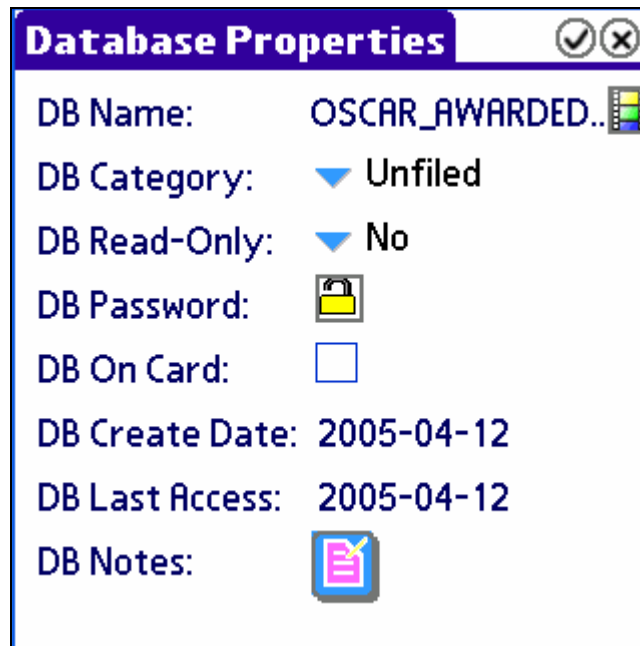
Ic...	Database Name	Tab.	rw
	OSCAR_AWARDED_MOVI.	1	rw
	INTERNET_ACRONYMS	1	rw
	FORTUNE_500_COMPAN.	1	rw
	ANNIVERSARY_GIFTS	1	rw
	AMERICAN_AREATELCODE	1	rw
	AIRLINEPHONE	1	rw
	US_PRESDENTS	1	rw

The database view shows a list of current databases with icon, name, the number of tables, and Read/Write attribute for each database.

By using the toolbar at the bottom of the screen, you can create a database, open a database, delete a database, duplicate a database, view and edit database properties, beam a database, and search for records matching a given keyword in a database.

You can also use the popup selector on the right hand side of the title bar to select the database category for display. You can categorize your databases so that you can group similar databases in a category for easy viewing.

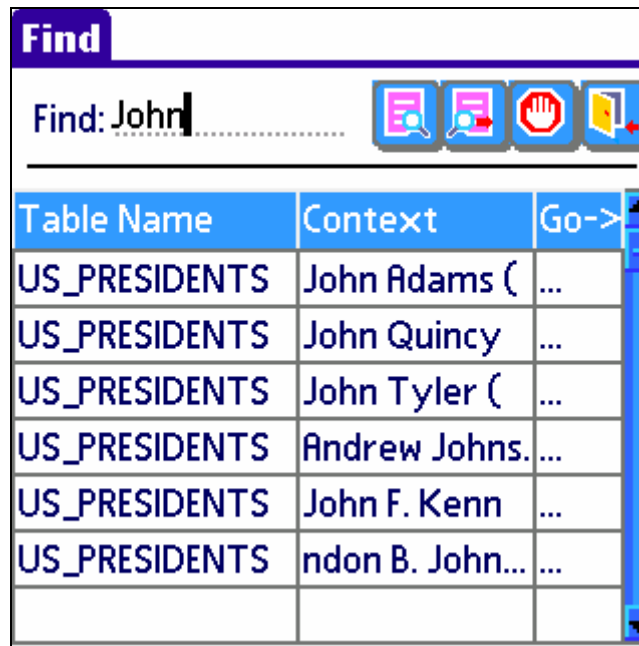
3.2.2 Database Properties



The Database Properties window allows you to view and change the following properties of a database: icon, category, read/write attribute, password, storage options (internal or memory card), creation date, last access date, and database notes. Tap on the “OK” button if you want to save your changes, and tap on the “Cancel” button otherwise.

Please note that synchronization with desktop program is supported only if the database is stored in internal memory. If you want to synchronize a database stored on your memory card with a Microsoft Access database on your desktop, you must move this database back to the internal memory of your Palm device.

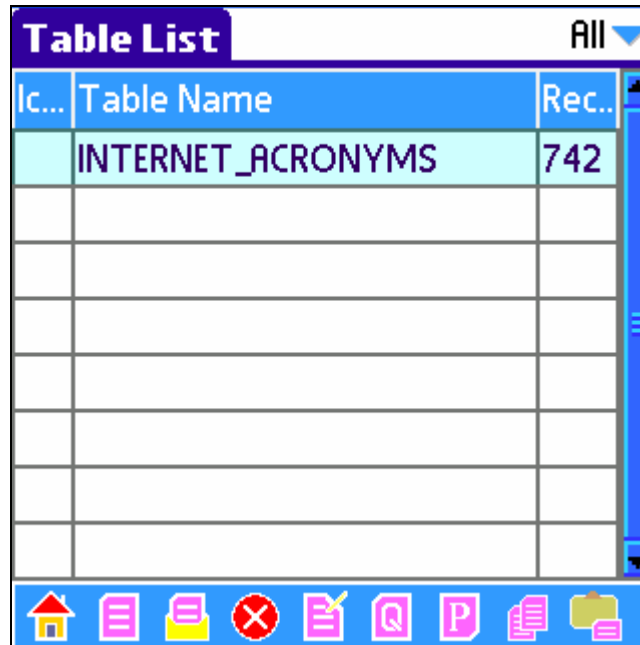
3.2.3 Search in a Database



To search for records in a database that contain a given keyword, tap on the “Find Icon” in the database view and tap on the database to search. In the “Find” window enter the keyword and tap on the “Find” icon. The search will then start and a list of records that contain the keyword will be displayed. If the list contains the record you want, tap on the “Go->” column to open the record. If you cannot find the desired record in the current result, tap on the “Find Next” icon to search for more results. You will be informed when there are no more records to search. You can also stop a search operation if it takes too long.

3.3 Table Management

3.3.1 Table View



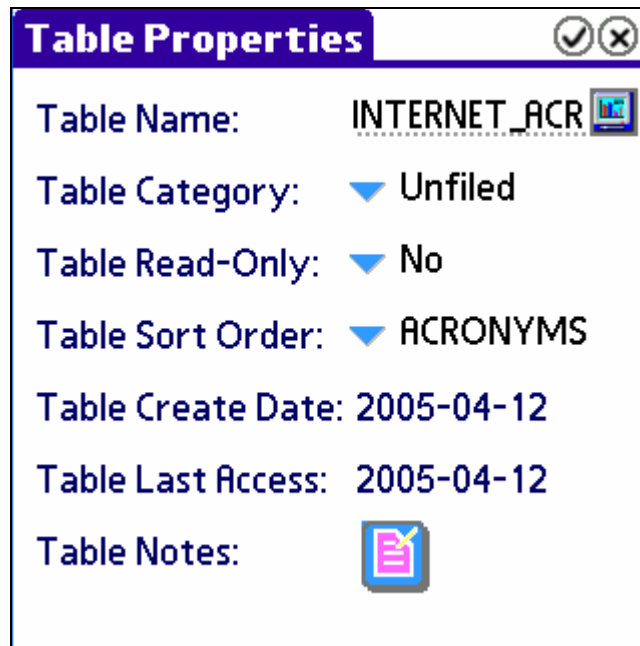
Ic...	Table Name	Rec..
	INTERNET_ACRONYMS	742

The table view shows a list of tables in the database with icon, name and the number of records for each table.

By using the toolbar at the bottom of the screen, you can create a table, open a table, delete a table, edit a table (table design), view and edit queries, view and edit table properties, and copy and paste a table.

You can also use the popup selector on the right hand side of the title bar to select the table category for display. You can categorize your tables so that you can group similar tables in a category for easy viewing.

3.3.2 Table Properties



The screenshot shows a dialog box titled "Table Properties" with a purple header bar containing a checkmark and a close button. The dialog lists the following properties for a table named "INTERNET_ACR":

- Table Name: INTERNET_ACR (with a small icon to the right)
- Table Category: ▼ Unfiled
- Table Read-Only: ▼ No
- Table Sort Order: ▼ ACRONYMS
- Table Create Date: 2005-04-12
- Table Last Access: 2005-04-12
- Table Notes: (with a notepad icon to the right)

The Table Properties window allows you to view and change the following properties of a table: icon, category, read-only attribute, sort order, creation date, last access date, table type, and table notes. Tap on the "OK" button if you want to save your changes, and tap on the "Cancel" button otherwise.

3.3.3 Table Design

Table Design		
Field Name	Field Type	Details
ACRONYMS	Text	PK
Means	Text	PN

Table design is the process of defining the structure of a table: the number of fields, the name of each field, and the data type of each field. The following field types are supported by AccessPlus: Int16, UInt16, Int32, UInt32, Float, Date, Time, DateTime, Text, Memo, Icon, Primary Key, Checkbox, List, BLOB (binary large object), Image, Calculation, Conditional, LookUp.

To add a new field, tap under the Field Name column and enter the name of the new field. Then you need to set its type and its attributes (Details). To delete a field, first select the field from the list, then tap on the “Delete” icon on the top-right corner of the screen (the rightmost icon).

A primary key field is required for each table. Using a primary key in the database allows better database organization and faster search speed. For an integer based primary key, you can set the primary key to automatically increment each time a new record is created. You can also set the initial value and step value of the automatic increment. In some cases you may need to use multiple primary keys in the same table and this is supported in AccessPlus.

You can also set a field to be a foreign key. A foreign key is a primary key field in another table in the same database. To specify the foreign key, you must select the source table and source field. If you want the foreign key to be also the primary key, use “Foreign Key (PK)”.

3.3.4 Table Design Details

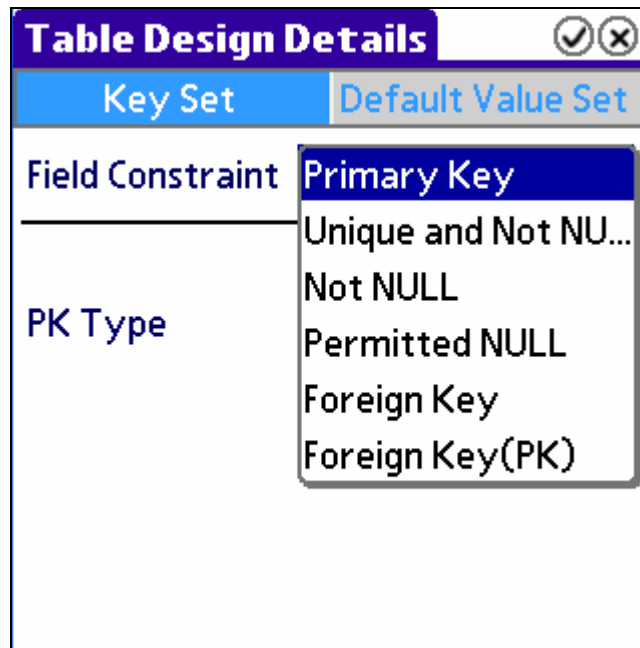


Table Design Details	
Key Set	Default Value Set
Field Constraint	Primary Key
	Unique and Not NU...
	Not NULL
	Permitted NULL
	Foreign Key
	Foreign Key(PK)
PK Type	

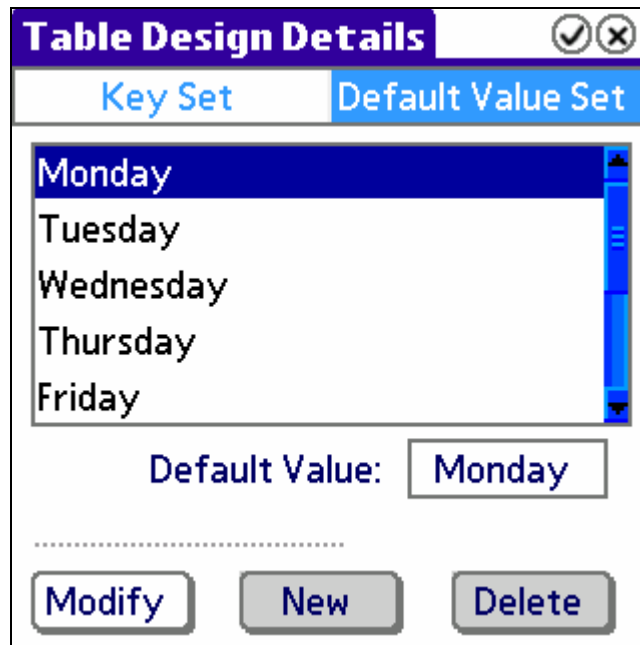
In the Table Design Details form, you can specify the field constraint of a field: Primary Key, Unique and Not NULL, Not NULL, Permitted NULL, Foreign Key, or Foreign Key (Primary Key).

For a primary key field, you can select from the following three methods of primary key generation:

- Not NULL: the primary key is specified by the user for each record and it must be unique for each record
- Auto Increment: the primary key is automatically incremented by the program for each new record
- Reuse: the primary key is automatically assigned by the program by using the smallest unused key value

Auto-Increment is the default key generation method and it is recommended for most databases.

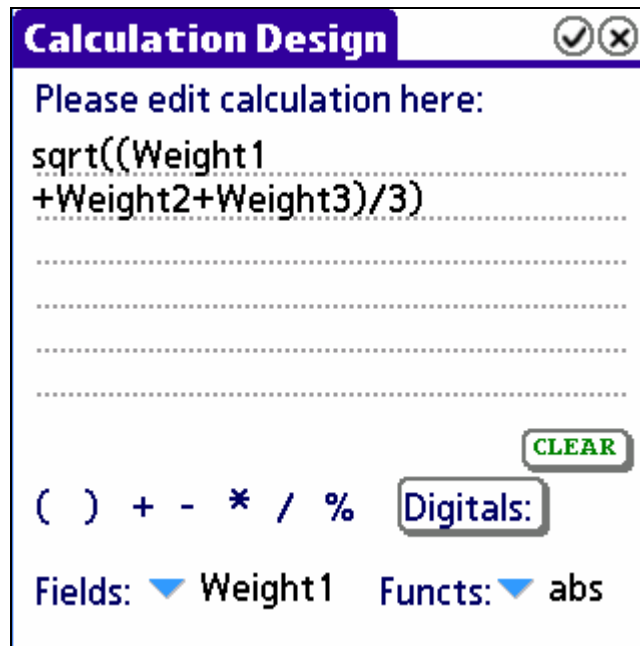
3.3.5 List Design



The dialog box is titled "Table Design Details" and has a close button (X) in the top right corner. It contains two tabs: "Key Set" and "Default Value Set". The "Key Set" tab is active, showing a list of days of the week: Monday, Tuesday, Wednesday, Thursday, and Friday. The "Default Value Set" tab is also visible. Below the list, there is a "Default Value:" label and a text box containing "Monday". At the bottom of the dialog, there are three buttons: "Modify", "New", and "Delete".

A list field type is used to select a value from a set of predefined values. To define a list field type, you must specify all possible values and the default value for the list. To add a new value to the list, tap on "New" and enter the value, then tap on "Modify" to add the value. To delete a value, tap on the value and then tap on "Delete". To change the default value, simply tap on the value you want. Tap on "OK" when you are done with your changes.

3.3.6 Calculation Design



Calculation Design [✓] [✕]

Please edit calculation here:

sqrt((Weight1
+Weight2+Weight3)/3)

.....

.....

.....

.....

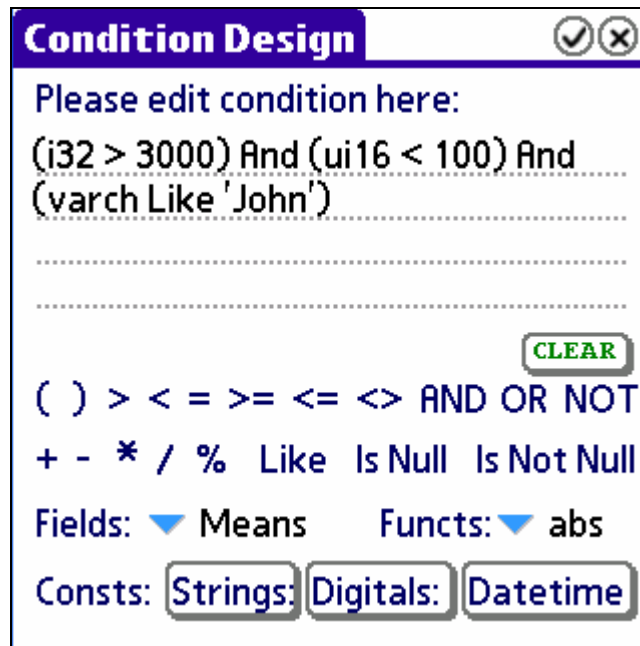
[CLEAR]

() + - * / % [Digitals:]

Fields: ▼ Weight1 Funct: ▼ abs

A calculation field allows you to compute an expression that is based on the values of other fields and constants. To define a calculation field, you can enter the expression directly in the "Calculation Design" window or use the buttons and pop selectors to create the expression. You can use the following simple operations: +, -, *, /, and %, as well as the following functions: abs, ran, sin, asin, cos, acos, tan, atan, pow, sqrt, len, lcase, ucase, ltrim, rtrim, now, dateadd, datesub, datespan, date2char, Int2char, char2Int, float2char, char2float, currency2char, and char2currency. If a field name contains white spaces, you must enclose it with brackets '[' and ']' when referencing it in the expression.

3.3.7 Condition Design



Condition Design [✓] [✕]

Please edit condition here:

(i32 > 3000) And (ui16 < 100) And
(varch Like 'John')

.....

.....

[CLEAR]

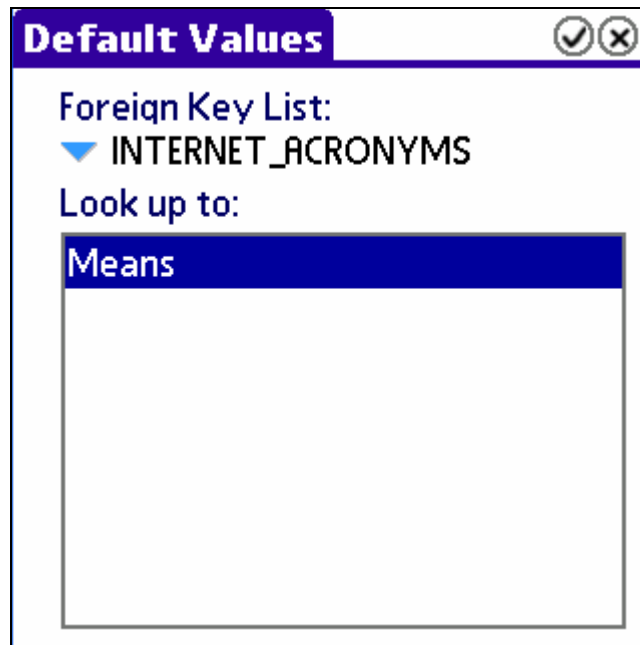
() > < = >= <= <> AND OR NOT
+ - * / % Like Is Null Is Not Null

Fields: ▼ Means Funct: ▼ abs

Consts: [Strings] [Digitals] [Datetime]

A condition field is a conditional expression based on the values of other field types and binary operations. To define a condition field, you can enter the expression directly in the “Condition Design” window or use the buttons and pop selectors to create the expression. You can use the following simple operations: >, <, =, >=, <=, AND, OR, NOT, +, -, *, /, %, Like, Is Null, Is Not Null, as well as the following functions: abs, ran, sin, asin, cos, acos, tan, atan, pow, sqrt, len, lcase, ucase, ltrim, rtrim, now, dateadd, datesub, datespan, date2char, lnt2char, char2lnt, float2char, char2float, currency2char, and char2currency. The syntax of the expression follows the format of standard SQL query statement. If a field name contains white spaces, you must enclose it with brackets '[' and ']' when referencing it in the expression.

3.3.8 LoopUp Design



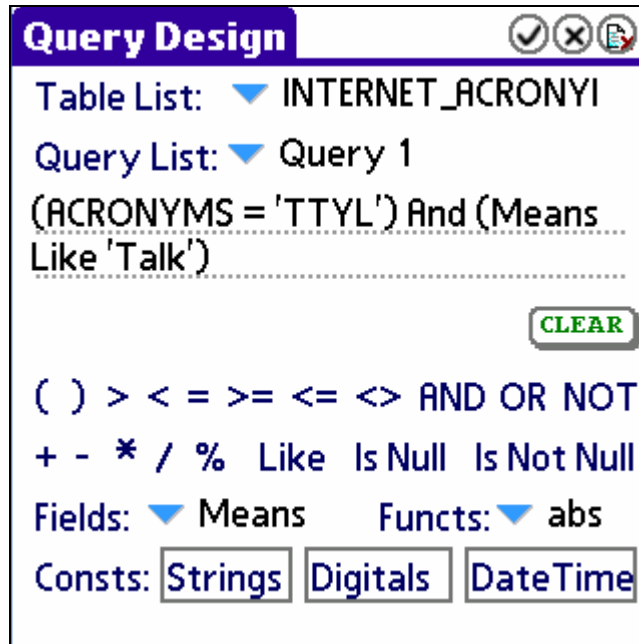
A database LookUp field allows you to access a field from a different table as if it is part of the current table. To define a database LookUp field, you must define a foreign key first (i.e., the foreign key field is the primary key field in the other table). To define a LookUp field, first select the foreign key, then select the field from the "Look up to:" list. The LookUp field can have a different name as the original field. You can define multiple LookUp fields in a table.

Once a LookUp field is defined, you can perform any operations on it as if it is located inside this table (even though it is actually stored in the source table).

There are a few limitations on tables that are referenced by other tables:

- If a table is referenced by other table(s) (i.e., at least one of its fields is used either as a Foreign Key field or as a LookUp field in another table), it cannot be deleted unless all tables that reference this table are deleted.
- If a table is referenced by other table(s) and its table structure is modified (i.e., a new field is added or an existing field is deleted) on Palm or Desktop, you must delete the table manually on the other side before the change can be synchronized to the other side.

3.3.9 Query Design



Query Design

Table List: ▼ INTERNET_ACRONYM

Query List: ▼ Query 1

(ACRONYMS = 'TTYL') And (Means
Like 'Talk')

CLEAR

() > < = >= <= <> AND OR NOT
+ - * / % Like Is Null Is Not Null

Fields: ▼ Means Funcs: ▼ abs

Consts: **Strings** **Digitals** **DateTime**

A query is a search that returns only records that satisfy the condition specified in the query. To define a query, you can enter the condition directly in the “Query Design” window or use the buttons and pop selectors to create the expression. You can use the following simple operations: >, <, =, >=, <=, AND, OR, NOT, +, -, *, /, %, Like, Is Null, Is Not Null, as well as the following functions: abs, ran, sin, asin, cos, acos, tan, atan, pow, sqrt, len, lcase, ucase, ltrim, rtrim, now, dateadd, datesub, datespan, date2char, Int2char, char2Int, float2char, char2float, currency2char, and char2currency. The syntax of this conditional expression follows the format of standard SQL query statement. If a field name contains white spaces, you must enclose it with brackets '[' and ']' when referencing it in the expression.

You can define multiple queries for each table. You can also add and delete queries from the current query list. In the Record List view window, once a query is selected, the list will be updated to contain only records that are returned by the query.

3.4 Record Management

3.4.1 Record List View

Record List		No Query ▾
ACRON..↑	Means	
AAMOF	As A Matter Of Fact	
ABT	About	
ADN	Any Day Now	
AFAIC	As Far As I'm Concerned	
AFAICT	As Far As I Can Tell	
AFAIK	As Far As I Know	
AFAYC	As Far As You're Concerned	
AFAYK	As Far As You Know	

Once you open a table, a list of records in the table is displayed. The list shows all records that are in the result set of the selected query. You can change the query to apply to the list by tapping on the popup list at the right hand side of the menu bar. If "No Query" is selected, all records in the table are displayed. You can use the horizontal and vertical scroll bars to browse through the record list

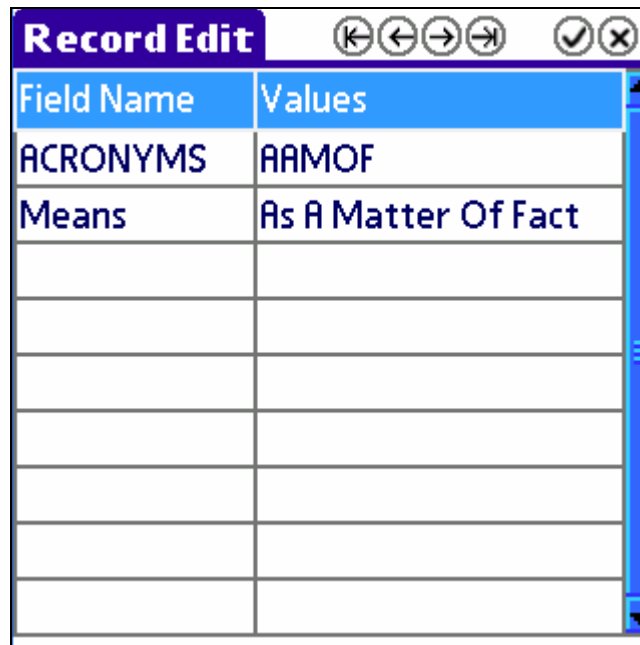
Record List		No Query ▼
ACRON..	Ascending	
AAMOF	Descending	
ABT	About	
ADN	Any Day Now	
AFAIC	As Far As I'm Concerned	
AFAICT	As Far As I Can Tell	
AFAIK	As Far As I Know	
AFAYC	As Far As You're Concerned	
AFAYK	As Far As You Know	



You can change the width of each column by tapping and dragging the vertical separators on the title bar. You can also select the field to display in the column and select the column to sort (and sort direction) by tapping on the title bar, as shown in the above picture. Tapping on “...” will bring up a popup list that would let you choose the field to display for the selected column.

You can also use the toolbar at the bottom of the screen to create a new record, to edit a record, to delete a record, or to return to the last view or the home view.

3.4.2 Record Edit View

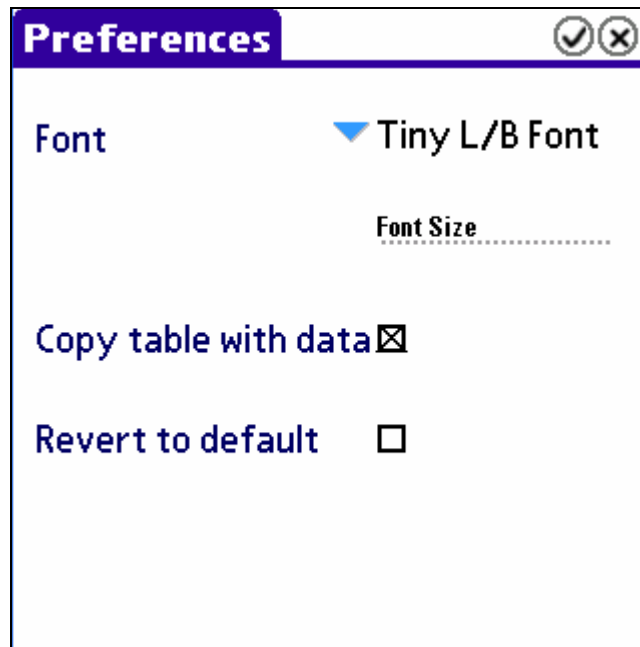


The screenshot shows a 'Record Edit' window with a toolbar at the top containing navigation icons (first, previous, next, last) and confirmation/cancellation icons (checkmark, X). Below the toolbar is a table with two columns: 'Field Name' and 'Values'. The table contains the following data:

Field Name	Values
ACRONYMS	AAMOF
Means	As A Matter Of Fact

When you open a record or create a record, the “Record Edit” window is open. In this window you can view or edit the field values of the selected record. You can use the toolbar at the top of the screen to go to the first, the last, the previous, and the next record. After you have finished editing the field values, tap on the “OK” icon to save your changes, or tap on the “Cancel” icon to return without saving the changes.

3.5 Preferences

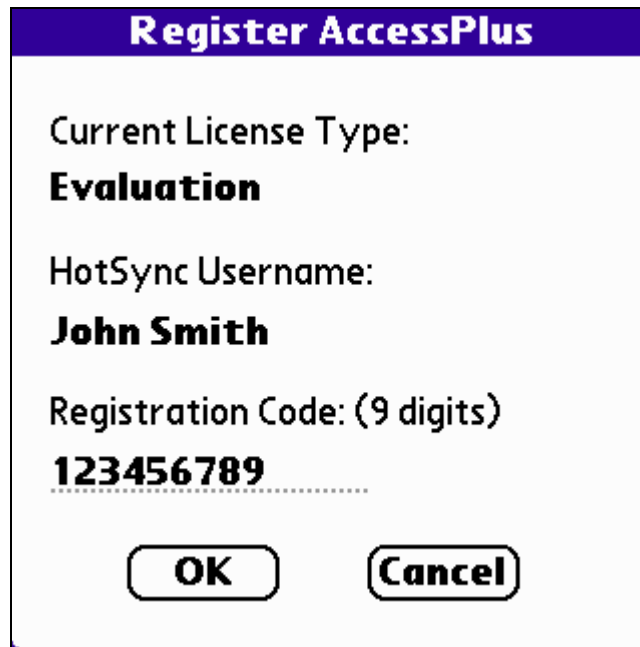


In the "Preferences" window you can select the font to use in various lists used in the application. A sample text field under the "Font Type" popup list shows the exact size of the font. Eight font types are available for high-resolution displays (320 by 320 or 320 by 480), and four font types are available for standard-resolution displays (160 by 160).

In the "Preferences" window you can also specify whether records should be copied when a table is copied. If the "Copy table with data" option is checked, all records in the table are copied along with the table structure. Otherwise, only the table structure is copied.

The "Revert to default" feature allows you to reset the display format (column order, column width) for all database tables. You should check this options only if you cannot no longer adjust the display settings manually.

3.6 Register AccessPlus

A screenshot of the "Register AccessPlus" dialog box. The title bar is purple with the text "Register AccessPlus" in white. The main area is white and contains the following text: "Current License Type:" followed by "Evaluation" in bold; "HotSync Username:" followed by "John Smith" in bold; and "Registration Code: (9 digits)" followed by "123456789" in bold. Below the registration code is a dotted line. At the bottom are two buttons: "OK" and "Cancel".

Register AccessPlus

Current License Type:
Evaluation

HotSync Username:
John Smith

Registration Code: (9 digits)
123456789
.....

OK **Cancel**

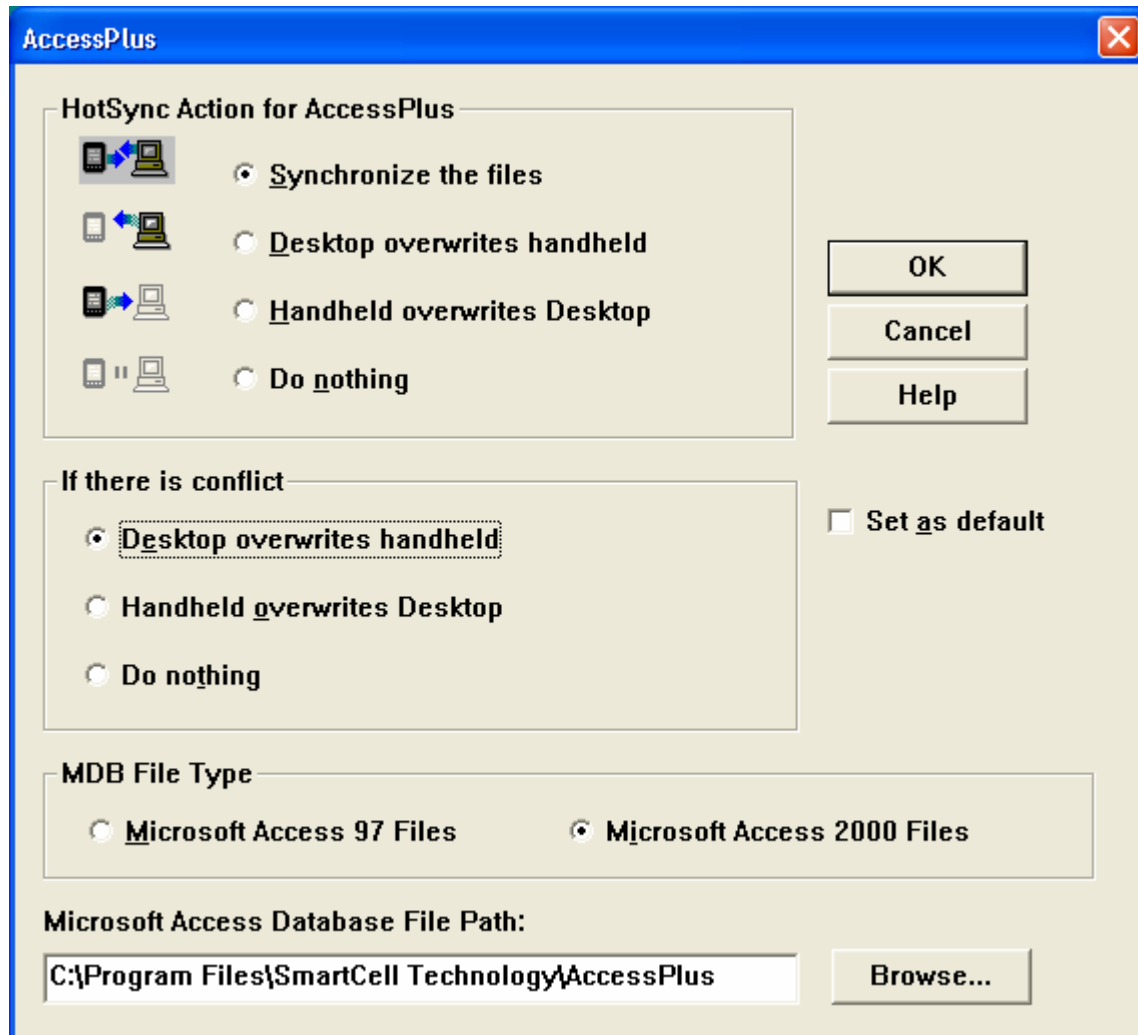
This option brings up the Register AccessPlus dialog. The Register AccessPlus dialog shows the current license type, the HotSync user name, and the 9-digit Registration Code. To register, enter you 9-digit registration code and tap on OK. If the code is correct, a confirmation message will be shown and your copy of software is then fully functional. Please note that the registration code would not work if the HotSync Username you provide us when you place the order does not match the HotSync Username shown in this window.

3.7 About AccessPlus



This option brings up the About AccessPlus dialog. The About AccessPlus dialog shows the copyright and version information of the AccessPlus application.

4 AccessPlus Conduit



The AccessPlus conduit for Windows supports two-way synchronization between AccessPlus and Microsoft Access 97, 2000, 2002 or 2003. You can start the AccessPlus conduit setup window by clicking the right mouse button over the HotSync icon, then select "Custom", select Access, and Click on "Change...". In the conduit set up window you can choose how to synchronize Palm device data and desktop database data. You can select the Microsoft Access (MDB) file format to use (Microsoft Access 2002, 2003 file formats are compatible with Microsoft Access 2000 file format). You can also select the directory that contains the Microsoft Access files. All MDB files under this directory will be synchronized with AccessPlus databases on the Palm device during the HotSync process.

Please note that synchronization with desktop program is supported only if the database is stored in internal memory. If you want to synchronize a database stored on your memory card with a Microsoft Access database on your desktop, you must move this database back to the internal memory of your Palm device.

5 How to Contact Us

Web Site

Visit our web site at <http://www.smartcell.com> for general information and software upgrades.

Questions about Your Order

Send email to sales@smartcell.com.

Technical Support

Send email to support@smartcell.com.

Comments, Suggestions, and Bug Report

Send email to feedback@smartcell.com.

Mailing Address

SmartCell Technology, LLC
45 Southern Hills Dr.
Aliso Viejo, CA 92656
USA
FAX: (949)305-4657

Appendix A - SmartCell Technology LLC Software License Agreement

By installing this software you accept all the terms and conditions of the following agreement.

This SmartCell Technology, LLC Software License Agreement accompanies the AccessPlus(TM) (version 2.0) software product and related explanatory materials ("Software"). The term "Software" also shall include any upgrades, modified versions or updates of the Software licensed to you by SmartCell Technology, LLC.

1. USE OF THE SOFTWARE

- You may use the Software in connection with a single computer system and for the number of users and purpose specified by SmartCell Technology, LLC. You may distribute the Software in the format as received from SmartCell Technology, LLC provided that no modifications are made to the Software.
- You may not distribute the License Information in any form, any copy, or any part of it to anyone else; you may not permit the use of the Software or License Information by more than the specified number of users; you may not sell, loan, rent, assign, lease or sub-license the Software or License Information or any copy or any part of it to anyone else; you may not modify, adapt, translate, reverse engineer, decompile, disassemble or otherwise attempt to discover the source code of the Software; you may not remove any copyright notice, trade mark, legend, logo or product identification of the Software or License Information.

2. COPYRIGHT AND TRADEMARK RIGHTS

The Software is owned by SmartCell Technology, LLC and its suppliers, and its structure, organization and code are the valuable trade secrets of SmartCell Technology, LLC and its suppliers. The Software also is protected by United States Copyright Law and International Treaty provisions. You may use trademarks only insofar as required to comply with Section 1 of this Agreement, in accordance with accepted trademark practice, including identification of trademark owner's name. Such use of any trademark does not give you any rights of ownership in that trademark. Except as stated above, this Agreement does not grant you any intellectual property rights in the Software.

3. UPGRADE

Upgrades of the software will be made available to you without charge by SmartCell Technology, LLC within the first twelve months after you purchase the software. Free upgrades are not available after this twelve months maintenance period.

Requests to change any registration information such as Palm HotSync Username and registration code are subjected to review by SmartCell Technology, LLC. New registration information would be given only if there is proof that errors have been made in the purchase process. SmartCell Technology, LLC reserves the right to reject such requests if no proof is given. No changes can be made to the registration information after the twelve months maintenance period.

4. LIABILITY

SMARTCELL TECHNOLOGY, LLC AND ITS SOFTWARE SUPPLIERS, DISTRIBUTORS AND DEALERS MAKE NO REPRESENTATIONS OR WARRANTIES WHETHER EXPRESS OR IMPLIED (BY STATUTE OR OTHERWISE) RELATING TO THE PERFORMANCE, QUALITY, MERCHANTABILITY OR FITNESS FOR A PARTICULAR PURPOSE OF THE SOFTWARE OR OTHERWISE AND ALL SUCH REPRESENTATIONS AND WARRANTIES ARE HEREBY SPECIFICALLY DISCLAIMED AND EXCLUDED.

YOU ALONE ARE ABLE TO DETERMINE WHETHER THE SOFTWARE WILL MEET YOUR REQUIREMENTS AND THE ENTIRE RISK AS TO ITS PERFORMANCE IS WITH YOU AND, SHOULD THE SOFTWARE PROVE DEFECTIVE, YOU ALONE MUST ASSUME THE ENTIRE COST OF ALL NECESSARY SERVICING, REPAIR OR CORRECTION AND ANY INCIDENTAL OR CONSEQUENTIAL EXPENSES. IN NO EVENT WILL SMARTCELL TECHNOLOGY, LLC, ITS SOFTWARE SUPPLIERS OR DISTRIBUTORS BE LIABLE FOR (1) DIRECT, (2) INDIRECT, (3) SPECIAL, (4) INCIDENTAL OR (5) CONSEQUENTIAL DAMAGES (INCLUDING LOSS OF PROFITS OR BUSINESS) RESULTING FROM ANY DEFECT AND OR/USE OF THE SOFTWARE, EVEN IF SMARTCELL TECHNOLOGY, LLC HAS BEEN ADVISED OF THE POSSIBILITY OF SUCH DAMAGE, WHETHER DUE TO SMARTCELL TECHNOLOGY, LLC'S NEGLIGENCE, BREACH OF CONTRACT, MISREPRESENTATION OR OTHERWISE.

NOTWITHSTANDING THE ABOVE, IF THERE SHOULD ARISE ANY LIABILITY ON THE PART OF SMARTCELL TECHNOLOGY, LLC BY REASON OF THE LICENSING OR USE OF THE SOFTWARE OR OTHERWISE, WHETHER DUE TO SMARTCELL TECHNOLOGY, LLC'S NEGLIGENCE, BREACH OF CONTRACT, MISREPRESENTATION OR OTHERWISE SUCH LIABILITY SHALL UNDER NO CIRCUMSTANCES EXCEED THE PRICE PAID BY YOU FOR THE LICENSE TO USE THE SOFTWARE OR AT THE ELECTION OF SMARTCELL TECHNOLOGY, LLC THE COST OF REPAIR OR REPLACEMENT OF THE DEFECTIVE SOFTWARE BY SMARTCELL TECHNOLOGY, LLC.

YOU SHALL INDEMNIFY SMARTCELL TECHNOLOGY, LLC AGAINST ALL CLAIMS BY THIRD PARTIES (OTHER THAN CLAIMS ALLEGING BREACH BY THE SOFTWARE, AS SUPPLIED, OF A THIRD PARTY'S COPYRIGHT, PATENT OR OTHER INTELLECTUAL PROPERTY RIGHTS) ARISING FROM THE POSSESSION OR USE OF THE SOFTWARE BY YOU OR ANYONE USING IT WITH YOUR CONSENT.

Some states or jurisdictions do not allow the exclusion or limitation of incidental, consequential or special damages, or the exclusion of implied warranties or limitations on how long an implied warranty may last, so the above limitations may not apply to you.

5. GOVERNING LAW AND GENERAL PROVISIONS

This Agreement will be governed by the laws of the State of California, U.S.A., excluding the application of its conflicts of law rules. This Agreement will not be governed by the United Nations Convention on Contracts for the International Sale of Goods, the application of which is expressly excluded. If any part of this Agreement is found void and unenforceable, it will not affect the validity of the balance of the Agreement, which shall remain valid and enforceable according to its terms. You agree that the Software will not be shipped, transferred or exported into any country or used in any manner prohibited by the United States Export Administration Act or any other export laws, restrictions or regulations. This Agreement shall automatically terminate upon failure by you to comply with its terms. This Agreement may only be modified in writing signed by an authorized officer of SmartCell Technology, LLC.

6. NOTICE TO GOVERNMENT END USERS

The Software and Documentation are "Commercial Items," as that term is defined at 48 C.F.R. .101, consisting of "Commercial Computer Software" and "Commercial Computer Software Documentation," as such terms are used in 48 C.F.R. 2.012 or 48 C.F.R. 27.7202, as applicable. Consistent with 48 C.F.R. 2.012 or 48 C.F.R. 27.7202-1 through 27.7202-4, as applicable, the Commercial Computer Software and Commercial Computer Software Documentation are being licensed to U.S. Government end users (A) only as Commercial Items and (B) with only those rights as are granted to all other end users pursuant to the terms and conditions herein.

Copyright (c) 2002, SmartCell Technology, LLC
All rights reserved.