

The BlueRemote User Guide

Karoly Lorentey

Copyright © 2006 Karoly Lorentey

Contents

1	Introduction	1
2	Requirements	1
3	Installing BlueRemote on Your Palm Device	2
3.1	Archive Contents	2
3.2	Installing the PRC file	2
4	Setting Up a Connection to Your PC	2
4.1	Connecting to Microsoft Windows XP	4
4.1.1	Microsoft Windows XP SP2 Bluetooth Stack	5
4.1.2	WIDCOMM Bluetooth Stack	9
4.1.3	BlueSoleil Bluetooth Stack	13
4.2	Connecting to Apple Mac OS X	17
4.3	Connecting to GNU/Linux	17
4.4	Reconnecting a Previous Connection	18
5	Controlling the Keyboard	20
5.1	Using On-Screen Buttons to Control the Keyboard	20
5.1.1	The Alpha Screen	22
5.1.2	The Numeric Screen	22
5.1.3	The Cursor Screen	23
5.1.4	The Function Screen	23
5.2	Using Graffiti to Control the Keyboard	24
5.3	Using Your Device's Builtin Keyboard	24
6	Controlling the Mouse Pointer	24
7	Configuring BlueRemote	26
7.1	The Preferences Dialog	26
7.2	Advanced Preferences	27
8	Registering BlueRemote	29
9	Support Information	30
10	Version History	30
11	Software License Agreement	31
12	Legal Notices	32

Tables

1	Treo keyboard combinations.	25
---	----------------------------------	----

1 Introduction

Thank you for downloading BlueRemote! BlueRemote turns your Palm device into a standard Bluetooth mouse and keyboard.

- Make your presentations impactful by switching slides while freely moving around! Don't be tied to your notebook!
- Enhance your couch potato factor by controlling your PC's DVD player without getting up from your sofa!
- Improve your musical taste by switching MP3 tracks from your kitchen on the PC in the living room!
- Impress your friends and loved ones with your magical remote control abilities!

Works out of the box.

BlueRemote works with most operating systems, including Microsoft Windows XP, Mac OS X and GNU/Linux. There is no need to install special drivers on the PC: BlueRemote works fine with the standard drivers that come with your system!

Emulates a full PC keyboard.

Tap on on-screen buttons, use Graffiti input or use your device's built-in keyboard to enter any key on a standard PC keyboard.

Familiar and convenient touchpad-like mouse interface.

Use your touchscreen just like a notebook's touchpad, or use your five-way navigator to move the mouse pointer on the PC.

Enhanced support for the Treo built-in keyboard.

Enter shortcuts such as Control-C, Alt-F, or even the mighty Control-Alt-Del directly on your Treo keyboard! Works on all OS 5.x Treo devices, including the new Treo 700p.

Free Ten-Day Evaluation Period.

Try before you buy! BlueRemote is free to try for ten days, after which you will need to purchase a registration code.

2 Requirements

BlueRemote requires a device running Palm OS 5.x (Garnet) and at least 150KB of available memory. A device with a QWERTY keyboard is recommended for maximal convenience, although BlueRemote is fully usable without one.

You can verify your Palm OS version in the *Info...* screen of your system launcher.

To connect to your PC, it must have a Bluetooth radio device. If your PC does not have built-in Bluetooth support, you can pick up a USB Bluetooth dongle at your local hardware store.

3 Installing BlueRemote on Your Palm Device

3.1 Archive Contents

The BlueRemote ZIP file contains the following files:

BlueRemote.prc

The BlueRemote program file.

BlueRemote.html

BlueRemote documentation in HTML format.

BlueRemote.pdf

BlueRemote documentation in PDF format.

doc/*

Pictures and other documentation files.

3.2 Installing the PRC file



Use the Palm Quick Install tool that came with your Palm device to install the file `BlueRemote.prc`.

The Palm Quick Install Tool can be run as a separate program or from its icon in the Palm Desktop. Instructions on how to use Palm Quick Install are in your device manual.

4 Setting Up a Connection to Your PC

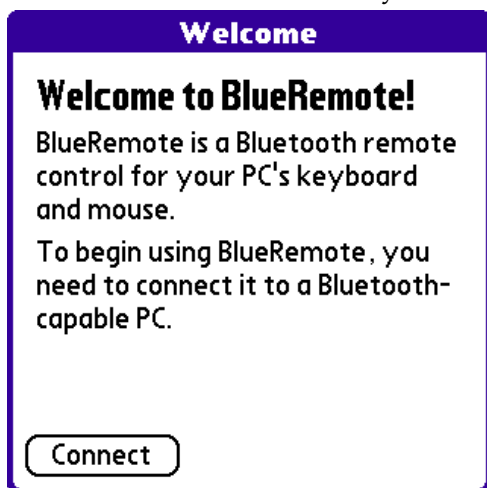
To use BlueRemote, you have to connect it to a PC. The one-time connection process has to be initiated from the PC, using its Bluetooth software drivers. In this section we show you how to connect BlueRemote to some popular Bluetooth drivers on several operating systems.

Note that BlueRemote does not come with its own set of PC drivers, but uses the standard Bluetooth device drivers that come with your PC operating system. By emulating a standard Bluetooth mouse and keyboard, BlueRemote is able to control the widest variety of Bluetooth systems, including those that we can't write device drivers for.

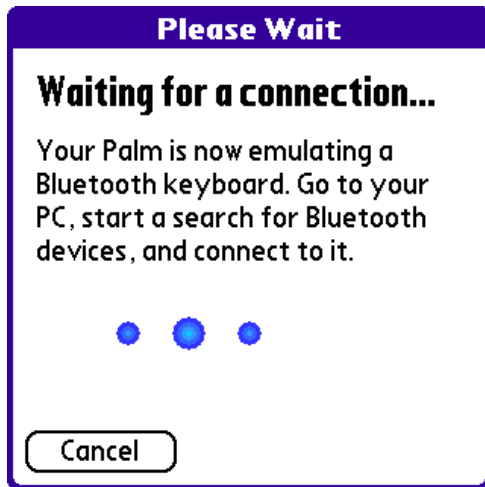
Connecting BlueRemote creates a permanent link between the Palm device and the PC. It is therefore normally unnecessary to repeat the manual connection process after a Palm reset or a PC reboot. Once it has been connected to a PC, BlueRemote will automatically try to reconnect to it on startup.



Tap on BlueRemote's icon in the system launcher to start BlueRemote.



On first startup, BlueRemote automatically prompts you to create a new connection. Tap *Connect*.



Your Palm device is ready to accept connections from your PC. The dots should be animated while the device is looking for connections. You will now have to connect to BlueRemote from the PC you want to control.

To continue, select the operating system that you want to control with BlueRemote:

- [Microsoft Windows XP](#)
- [Apple Mac OS X](#)
- [GNU/Linux \(BlueZ Bluetooth Stack\)](#)

If you don't see your system on the above list, please consult the documentation that came with the PC. If your device understands the standard Bluetooth HID profile, it is likely BlueRemote will work with it.

4.1 Connecting to Microsoft Windows XP

Windows XP has several Bluetooth driver implementations from various vendors. Each of them has its own way of connecting to BlueRemote. In this manual, we show step-by-step instructions to connect BlueRemote with three popular Bluetooth implementations. First, we have to decide which driver is installed on your PC.



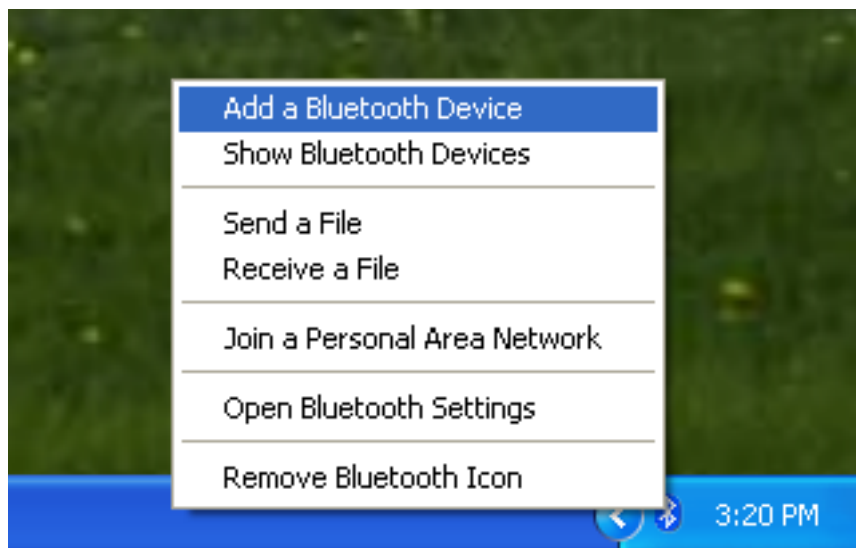
Please locate the Bluetooth icon in your system tray's notification area, and right click on it with your mouse.

To continue, click on the picture below that is most similar to the popup menu you get.

Microsoft Windows XP SP2 WIDCOMM Bluetooth Stack BlueSoleil Bluetooth Stack

If your popup menu resembles none of the images above, you probably have a Bluetooth stack we did not test with BlueRemote. BlueRemote will likely still work with your PC, but you will have to consult the Bluetooth section of your PC documentation to learn how to set up the connection.

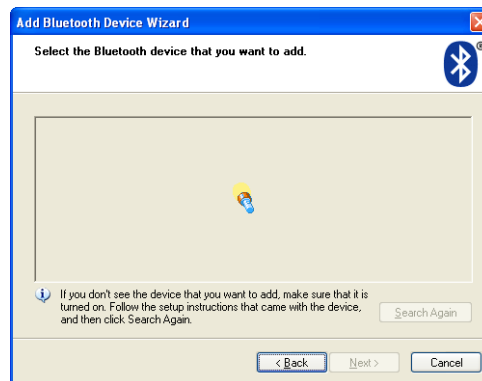
4.1.1 Microsoft Windows XP SP2 Bluetooth Stack



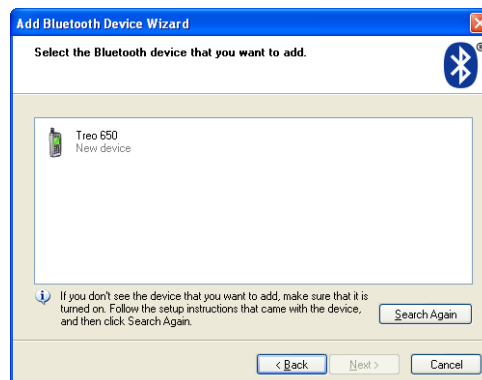
Select *Add a Bluetooth Device* from the Bluetooth popup menu.



The *Add Bluetooth Device Wizard* appears. Select *My device is ready to be found*, and click *Next*.



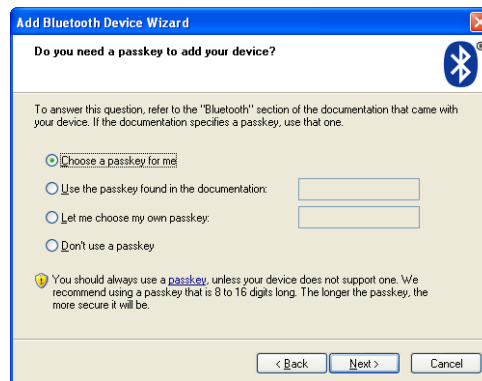
The wizard will start searching for nearby Bluetooth devices. Please wait until the search is complete.



Your Palm device should show up in the result. If it doesn't, click *Search Again* until it appears in the list.



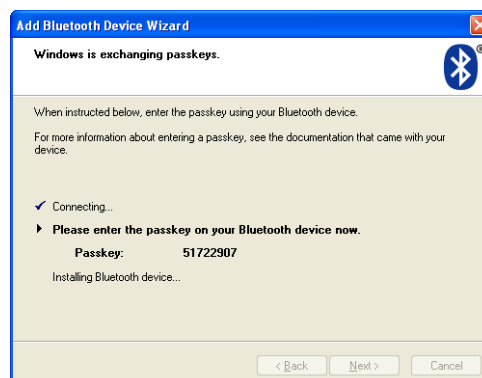
Select your device and press *Next*.



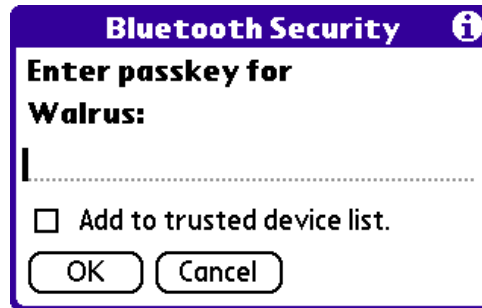
If you have not yet paired your Palm device with your PC, the *Add Bluetooth Device Wizard* will now begin the pairing process.

The pairing process sets up a secure connection between your Palm and PC, so that this complex manual connection process won't have to be repeated the next time you want to use BlueRemote.

Select *Choose a passkey for me* and click *Next*.



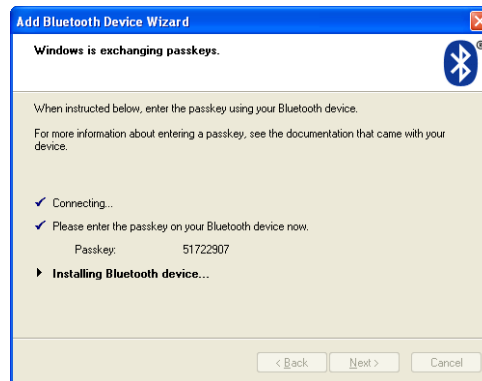
Windows will show you the passkey to enter on the Palm device.



Your Palm device should prompt you with the dialog shown above.

Enter the passkey shown on your PC in the text field. If you are sure you entered all the digits correctly, check the *Add to trusted device list* checkbox and tap *OK*.

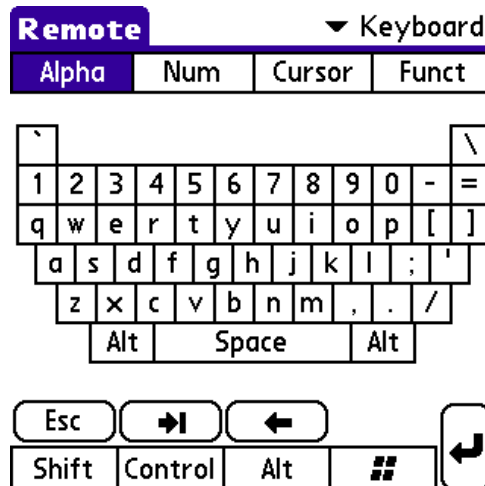
Your Palm will close the pairing dialog and return to the *Waiting for a connection* form.



The wizard automatically begins installing the necessary drivers to use BlueRemote. During this process, you may see several dialogs momentarily appearing on your screen. Wait until they disappear.



Once the wizard has finished connecting to BlueRemote, it will report the successful connection to you. Click *Finish* to exit the wizard.

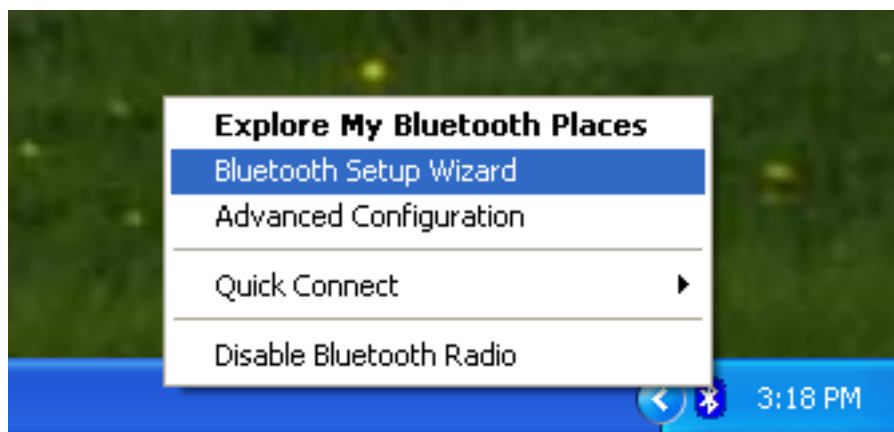


Meanwhile, the Palm device reports that it had connected to your PC, and the *Waiting for a connection* dialog is replaced by the *Alphanumeric Keyboard* screen.

You are now ready to start controlling your PC with BlueRemote.

Tip To skip the rest of the installation instructions and continue with learning how to use BlueRemote, jump ahead to the [Controlling the Keyboard](#) section.

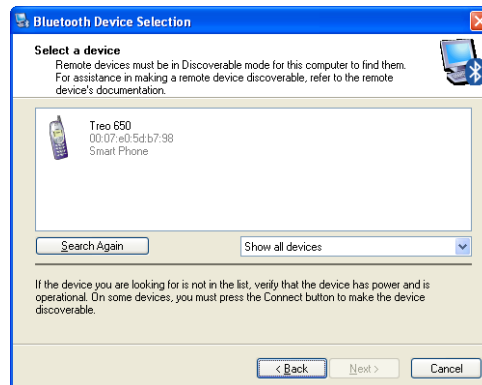
4.1.2 WIDCOMM Bluetooth Stack



Select *Bluetooth Setup Wizard* from the Bluetooth popup menu.



On the first screen of the Bluetooth Setup Wizard, select *I want to find a specific Bluetooth device and configure how this computer will use its services*. Click *Next*.



You get a list of nearby Bluetooth devices. Your Palm device should appear on the list. If it doesn't, hit *Search Again* until the display is updated. If this does not help, try turning off and on your PC's Bluetooth radio and restarting the procedure. Make sure BlueRemote is displaying its *Waiting for a connection . . .* screen during this process.

When your Palm device appears on the list, select it and click *Next*.



During this process, occasionally your Palm device will display some messages below the blue dots. These messages indicate the status of the connection to reassure you that the process is progressing.

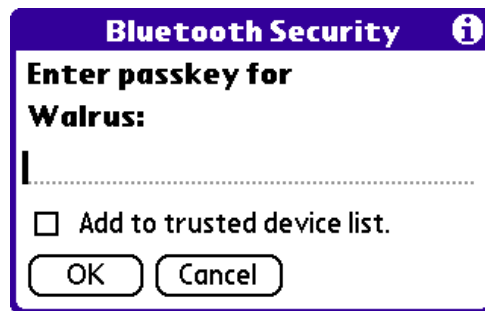


If you have not yet paired your Palm device with your PC, the Bluetooth Setup Wizard will now begin the pairing process.

The pairing process sets up a secure connection between your Palm and PC, so that this complex manual connection process won't have to be repeated the next time you want to use BlueRemote.

To start pairing, you have to choose a PIN code (also called a *passkey*). Choose a number of your choice; any number will do. (Note that once the pairing process is done, the PIN code is discarded. It is not necessary for you to remember it after the connection has been set up.)

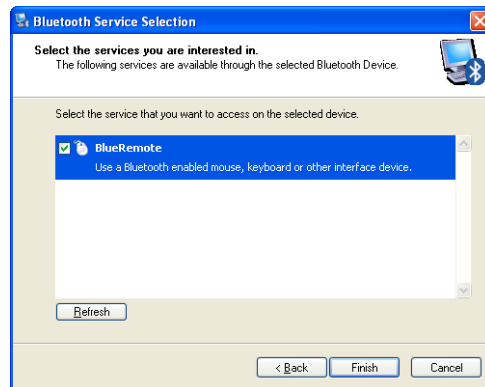
Type in the PIN code of your choice, and hit *Initiate Pairing*.



Your Palm device should prompt you with the dialog shown above.

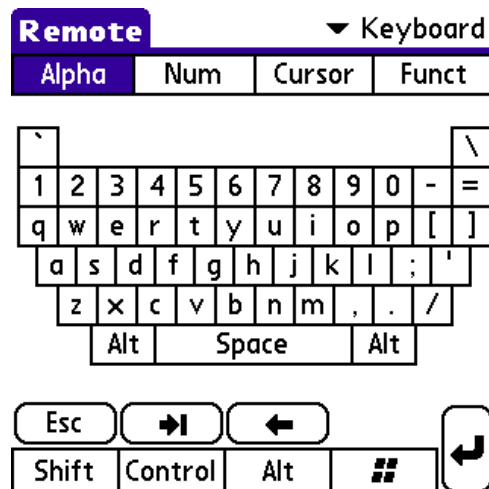
Enter the same PIN code you entered on your PC in the text field. If you are sure you entered all the digits correctly, check the *Add to trusted device list* checkbox and tap *OK*.

Your Palm will close the pairing dialog and return to the *Waiting for a connection* form.



Return to your PC which should now display a list of services available on your Palm device. Select BlueRemote (the only entry in the list), and click *Finish*.

Your PC will now automatically install the drivers necessary to connect to a Bluetooth peripheral. During this process, you may see several dialogs momentarily appearing on your screen. Wait until they disappear.



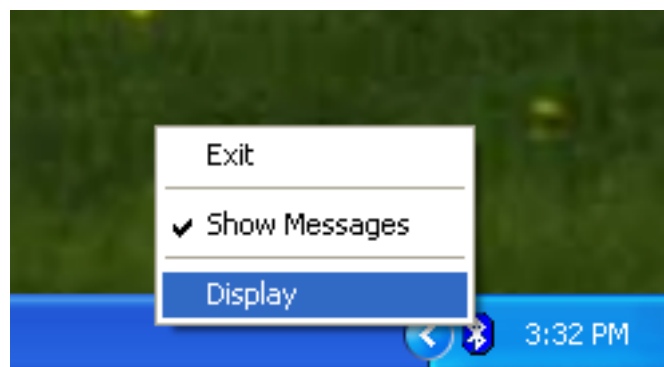
Meanwhile, the Palm device reports that it had connected to your PC, and the *Waiting for a connection* dialog is replaced by the *Alphanumeric Keyboard* screen.

Once your PC completes the installation process, BlueRemote is ready to control your PC.

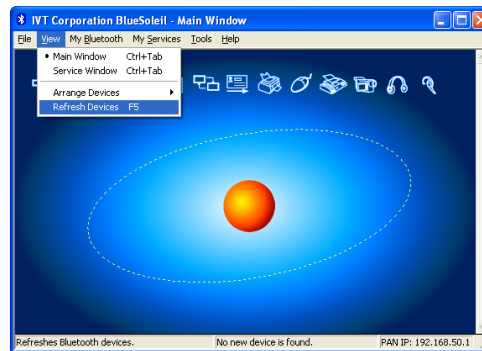
Tip

To skip the rest of the installation instructions and continue with learning how to use BlueRemote, jump ahead to the [Controlling the Keyboard](#) section.

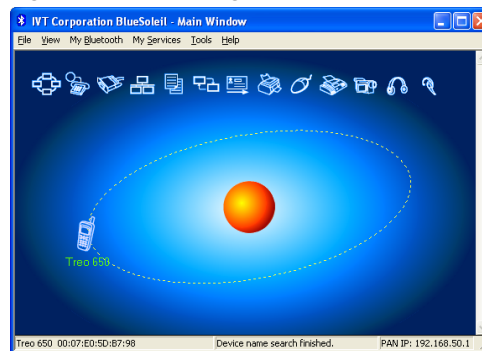
4.1.3 BlueSoleil Bluetooth Stack



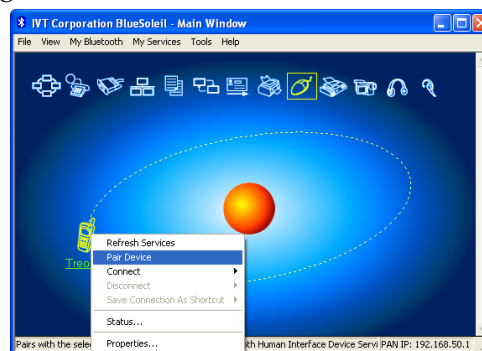
Select *Display* from the Bluetooth popup menu.



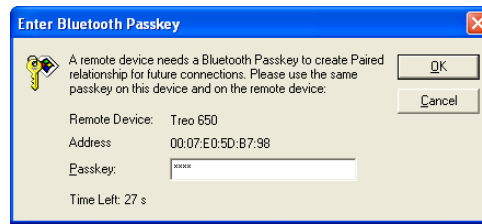
You get the Main Window of BlueSoleil. It probably won't show your Palm device yet, so refresh the display by pressing **F5**, or selecting *Refresh Devices* from the *View* menu.



Your Palm device should show up on the ring around the orange center representing your PC. If it doesn't appear, hit **F5** again until it does.



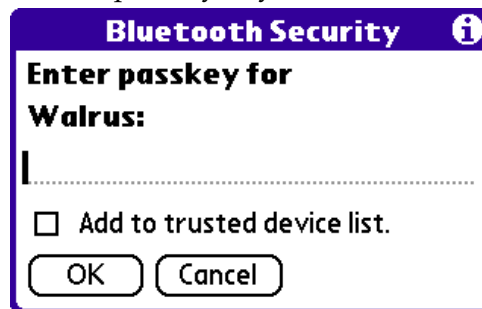
To begin the pairing process, right-click on your device and select *Pair Device*.



The pairing process sets up a secure connection between your Palm and PC, so that this complex manual connection process won't have to be repeated the next time you want to use BlueRemote.

To start pairing, you have to choose a passkey. Choose a random number; any number will do. (Note that once the pairing process is done, the passkey is discarded. It is not necessary for you to remember it after the connection has been set up.)

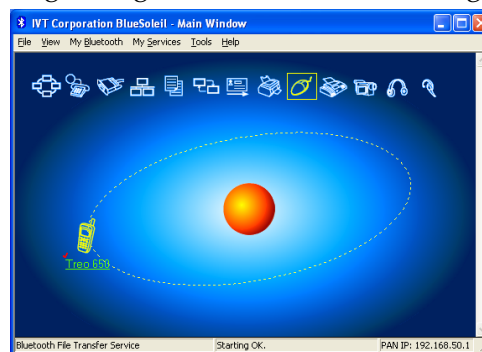
In the dialog that appears, enter the passkey of your choice, and hit OK.



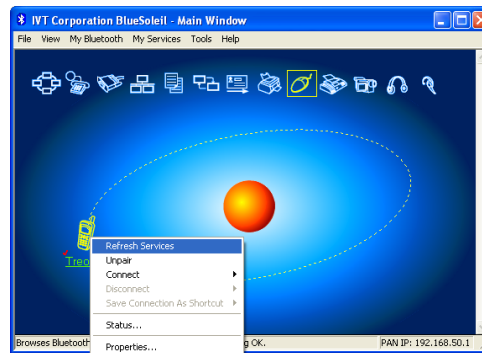
Your Palm device should prompt you with the dialog shown above.

Enter the same passkey you entered on your PC in the text field. If you are sure you entered all the digits correctly, check the *Add to trusted device list* checkbox and tap OK.

Your Palm will close the pairing dialog and return to the *Waiting for a connection* form.

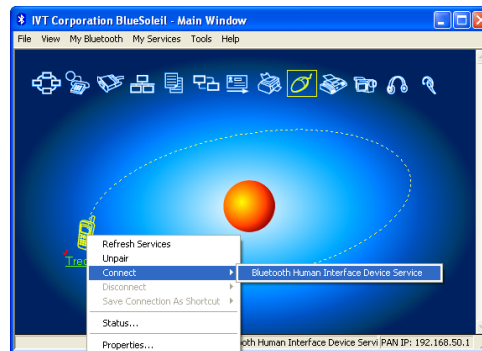


BlueSoleil confirms that the pairing process completed successfully by displaying a little red mark beside the name of your device.

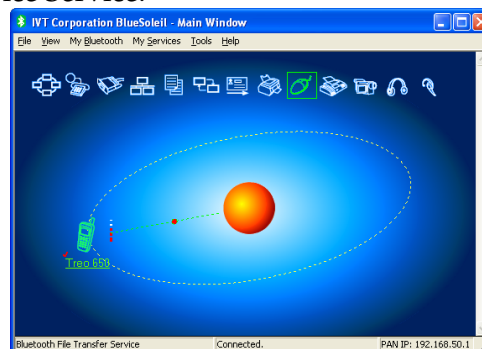


Note how the little mouse icon above the device ring is highlighted with a yellow frame. This means that BlueSoleil has recognized that your Palm device is a Bluetooth peripheral.

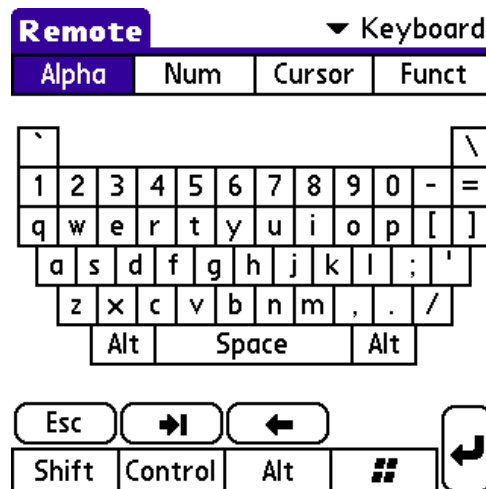
If the mouse icon is not highlighted, right click on your device and click *Refresh Services*.



Now connect to your device by right clicking on the device icon and selecting *Connect -- Bluetooth Human Interface Device Service*.



Your PC will now automatically install the drivers necessary to connect to a Bluetooth peripheral. Once the process has finished, BlueSoleil will update its display to show that the device has been connected.



Meanwhile, the Palm device reports that it had connected to your PC, and the *Waiting for a connection* dialog is replaced by the *Alphanumeric Keyboard* screen.

Once your PC completes the installation process, BlueRemote is ready to control your PC.

Tip

To skip the rest of the installation instructions and continue with learning how to use BlueRemote, jump ahead to the [Controlling the Keyboard](#) section.

4.2 Connecting to Apple Mac OS X

You can connect BlueRemote to your Mac using the Bluetooth Setup Assistant. The assistant is located in the Utilities folder. Please consult your system manuals for detailed instructions.

Tip

To skip the rest of the installation instructions and continue with learning how to use BlueRemote, jump ahead to the [Controlling the Keyboard](#) section.

4.3 Connecting to GNU/Linux

To use BlueRemote to control Linux, you will have to use a recent version of the [BlueZ Bluetooth stack](#). We have tested BlueRemote with BlueZ 2.25 and 3.1, but later versions should work equally well. BlueZ should already be included in your Linux distribution, although the package may not be installed by default.

With the BlueZ stack, you will be able to control both the Linux text console and X server input.

To get the full feature set of BlueRemote, we suggest to use the latest kernel patches available from <http://www.bluez.org/patches.html>. BlueRemote will connect to your PC in a limited *Boot Protocol* mode unless the kernel patches are installed. Some features of BlueRemote may not work in Boot Protocol mode.

Once BlueZ is installed on your PC, you can connect to BlueRemote using the `hidd` command-line utility. You will have to know the Bluetooth address of your Palm device, which you can get using the `hcitool` utility. You will have to become root in order to add a new HID device to your system.

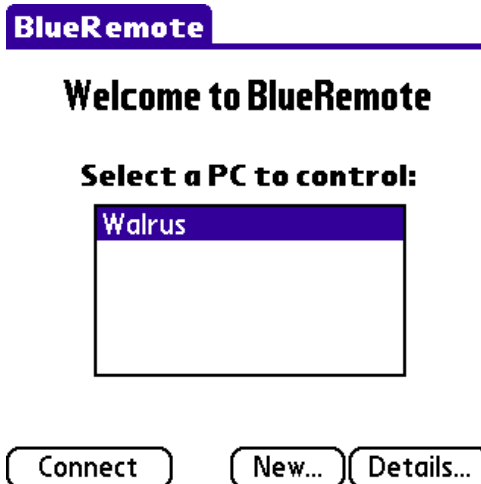
```
# hcitool scan --flush
Scanning ...
    00:07:E0:3D:B2:91      Treo 650
# hidd --connect 00:07:E0:3D:B2:91
#
```

Note that the `hidd` utility does not print anything on the terminal on success.

Linux will remember that you have connected BlueRemote and it is therefore not necessary to repeat this process after a reboot.

4.4 Reconnecting a Previous Connection

Once connected, your PC and BlueRemote will remember their connection, and will let you reconnect them without repeating the pairing process. To support this, BlueRemote automatically attempts to restore the last connection on startup. If this fails, or you manually disconnect BlueRemote, you will be presented with the screen below.



From this screen, you can select any of the previously connected PCs. Tap *Connect* to reconnect to the selected PC.

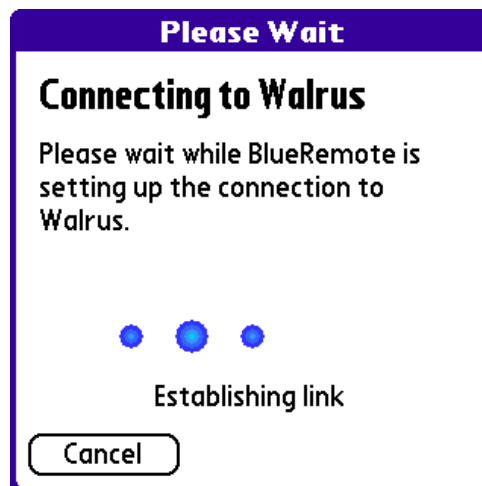
If you want to connect to a new PC, simply tap *New* and the connection process will start again.

Tapping on the *Details* button will show you detailed information about the currently selected PC, like its Bluetooth address, or the last time you connected to it.



You can use the *Delete* button to delete the connection currently displayed in the *Details* form.

When you tap *Connect* on the PC selection screen, the *Connecting to* screen will appear with the familiar blue dots.



This time, however, it won't be necessary for you to go to your PC and go through a series of dialog boxes: in most cases the reconnection will automatically succeed in a few seconds.

Sometimes BlueRemote might report that the reconnection failed. In this case, you have to reconnect the devices by repeating the manual connection process above.

5 Controlling the Keyboard

In this section and the next, we describe the heart of BlueRemote: the control screens that you will use to control the keyboard and mouse pointer of your PC.

BlueRemote emulates a standard 104-key PC keyboard. You can press keys on the PC by any of the following three methods:

- Tapping on the on-screen buttons presented by BlueRemote.
Some infrequently used keys are only available by this method.
See [Section 5.1](#).
- Drawing Graffiti characters in the input area of your device (if available).
See [Section 5.2](#).
- Using the built-in QWERTY keyboard of your device (if available).
This is perhaps the most convenient input method.
See [Section 5.3](#).

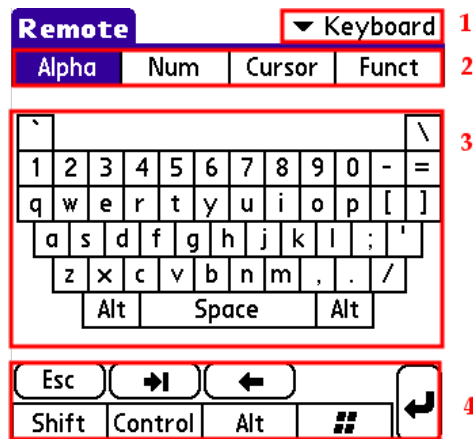
Note that while the key captions shown by BlueRemote correspond to a US keyboard layout, the actual letters and symbols that appear on your PC depend on the keyboard layout that is currently set. (This is a limitation of the Bluetooth HID protocol that is implemented by BlueRemote.) While this may sometimes cause confusion, it also allows you to enter accented national characters or special symbols that are not normally found on a US layout.

5.1 Using On-Screen Buttons to Control the Keyboard

The 104 keys on a standard US PC keyboard layout would not fit comfortably on the screen of your Palm device. Therefore, we distributed them on four separate screens in BlueRemote: *Alpha*, *Numeric*, *Cursor* and *Function*.

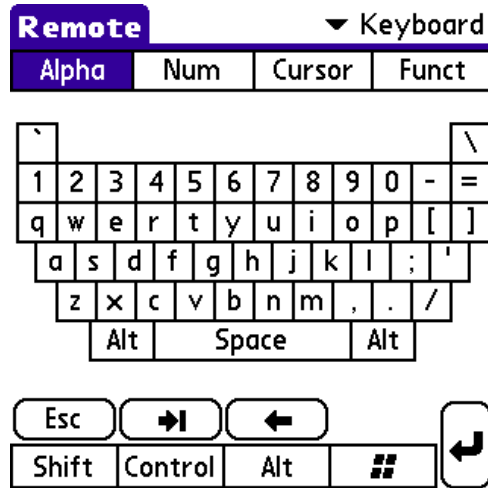
To switch between screens, use the push buttons displayed at the top of each screen, or, if you prefer, press the second hard key to cycle between screens.

When you first connect to a PC, BlueRemote displays the *Alpha* screen shown below. We will use this screen to demonstrate the elements common to all screens in Keyboard Mode.



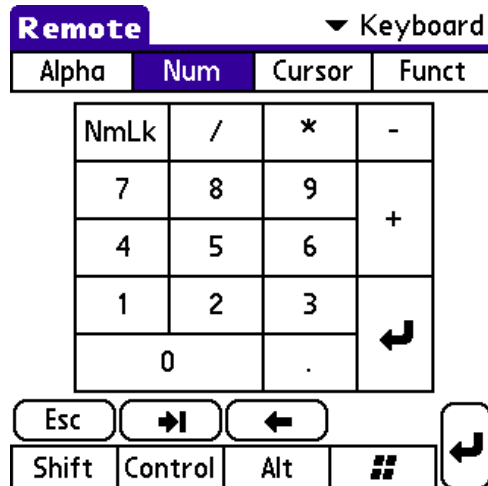
1. You can use the mode selection pop-up list to switch between controlling the keyboard and mouse. You can also toggle between these modes by pressing the first (leftmost) hard button on your device.
2. To switch between different screens in the keyboard mode, tap on the selection buttons. For more efficient access you can use the second hard button to cycle between these screens.
3. The main area shows the keyboard buttons available on the specific screen you are on. This area is different for each screen available in Keyboard mode.
4. The bottom area is common between all Keyboard screens and shows a selection of the most frequently used buttons and all available keyboard modifiers. From left to right, the top row consists of the **Escape**, **Tab** and **Backspace** buttons. The bottom row contains special “sticky” toggle buttons for the modifier keys. The rightmost button spans both rows: it’s **Enter**.

5.1.1 The Alpha Screen



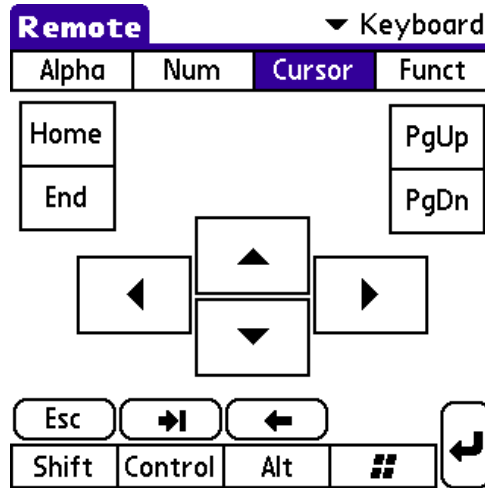
The *Alpha* screen lets you enter letters of the alphabet, digits, and punctuation symbols. It also has both **Left Alt** and **Right Alt** modifier keys, to let you enter special characters on international keyboard layouts.

5.1.2 The Numeric Screen



The second screen in Keyboard mode shows the keys on the numeric keypad. The **NumLock** key (marked **NmLk**) is drawn with a blue background when the **NumLock** LED is enabled.

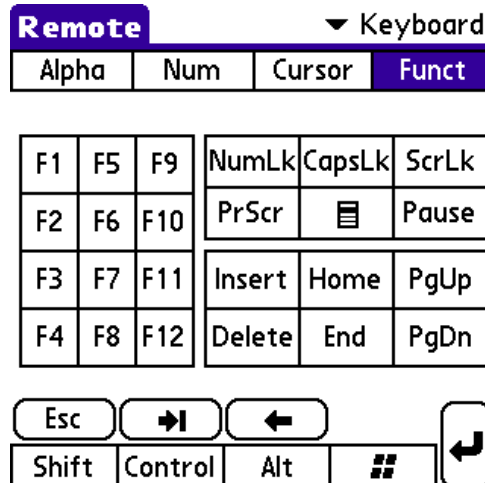
5.1.3 The Cursor Screen



The third screen in Keyboard mode is for navigation. Besides the four arrow keys, it also includes **Home**, **End**, **PageUp** and **PageDown**. Note that all these keys are repeating buttons: when you hold your pen on them, they send keyboard presses continuously in regular intervals.

If your device has a 5-way navigator, you can also use it to control the arrow keys. The center button is for the **Enter** key.

5.1.4 The Function Screen



The fourth and final screen in Keyboard mode is for function keys. Beside the twelve numbered keys from **F1** to **F12**, it also contains the set of special keys normally found above the arrow keys on a PC keyboard. **Caps Lock** (labeled **CapsLK**) and **Scroll Lock** (marked **ScrLk**)

is also shown here, along with a copy of **NumLk** from the keypad. Beside toggling the lock status, these three keys also indicate the current state.

The button between **PrintScreen (PrScr)** and **Pause** is the **Task** button.

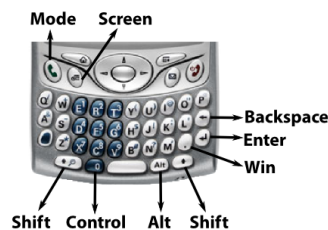
5.2 Using Graffiti to Control the Keyboard

If your device has a Graffiti input area, you can draw letters, numbers and symbols there as usual.

BlueRemote automatically converts symbols and punctuation characters to the corresponding keystroke on a US keyboard layout. For example, if you enter the \$ symbol, BlueRemote will send Shift-4 to the PC. Remember that BlueRemote expects a US keyboard layout; if you use another layout, then the symbols that appear on your PC may be different from what you entered on your Palm.

5.3 Using Your Device's Builtin Keyboard

If your device has a builtin keyboard, you can use it to control your PC's keyboard. The keyboard layout is demonstrated below on a Treo 650 device. Other devices have similar layouts.



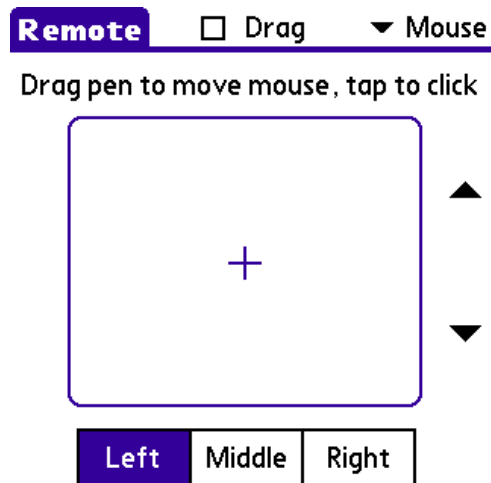
Note that the **Option** key retains its original meaning so that you can input numbers, punctuation and other symbols in the familiar way. However, BlueRemote redefines the other modifiers to emulate standard modifiers on a PC keyboard. See [Table 1](#) for a list of keyboard mappings.

6 Controlling the Mouse Pointer

BlueRemote emulates a standard three-button PC mouse with a scrolling wheel.

<i>PC key</i>	<i>Treo key</i>
Up Arrow	5-way Up
Down Arrow	5-way Down
Left Arrow	5-way Left
Right Arrow	5-way Right
Enter	Enter or 5-way Center
Shift	Shift
Alt	Alt
Control	0 (zero)
Win	. (period)
Tab	Option-Space
Escape	Option-Backspace
Page Up	Option-Up
Page Down	Option-Down
Home	Option-Left
End	Option-Right
0 (zero)	Option-0
. (period)	Option-.

Table 1 Treo keyboard combinations.



You can use the large rectangular area just like a touchpad on a notebook computer: drag your finger or stylus across it to move the pointer, and tap to click with the currently selected mouse button.

You can select which mouse button your next tap will click with the buttons below the touchpad area. To support the most frequent usage case, the middle and right buttons automatically switch back to the left (default) button after you click.

To drag with the mouse, check the *Drag* checkbox, position the pointer to the place where you want to start dragging, and tap to press and hold the mouse button. Now move the pointer where you want to stop dragging, and tap again to release the button.

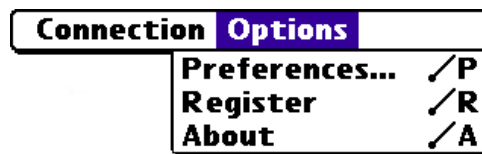
You can use the triangular arrows to the right of the touchpad to scroll with the wheel.

In Mouse mode the 5-way navigator is redefined to control the mouse pointer. The center key clicks with the left mouse button.

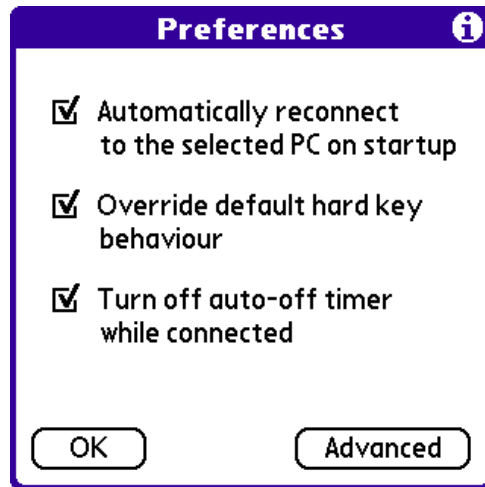
If your device has a side key, you can use it to click with the left mouse button. The volume keys (if available) control the scrolling wheel. (Note that these keys also work in Keyboard mode.)

7 Configuring BlueRemote

7.1 The Preferences Dialog



The *Options--Preferences...* menu item displays the *Preferences* panel that you can use to configure some aspects of BlueRemote's behaviour.



Automatically reconnect to the selected PC on startup

If you want BlueRemote to automatically reconnect to the last PC on startup, enable the first checkbox.

Override default hard key behaviour

If you would like BlueRemote to override the default behaviour of the hard keys on your device, enable the second checkbox. Note that some of BlueRemote's advanced functionality will be inaccessible unless you enable this option.

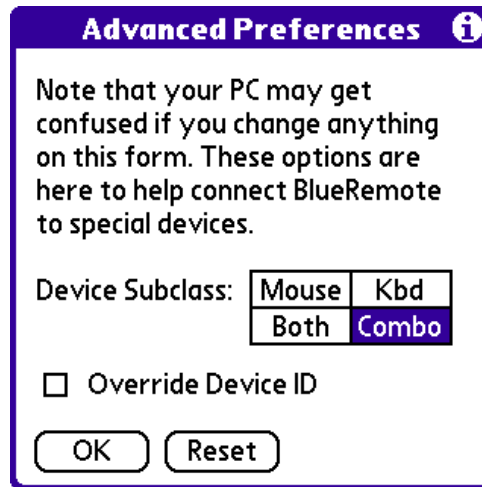
Turn off auto-off timer while connected

If you want BlueRemote to disable your device's auto-off timer while a connection is active, set the third checkbox. You can still press the power button to manually turn off your device. Note that enabling this option may drain your batteries if you leave BlueRemote unattended.

All three options are enabled by default.

7.2 Advanced Preferences

The *Preferences* panel includes a button labeled *Advanced*. By tapping on this button, you get to the *Advanced Preferences* panel.



Device Subclass

The Device Class is a parameter of Bluetooth devices that gives a rough approximation of the type of the device. For Human Interface Devices, the device subclass indicates if the device is a keyboard, a mouse, or some other peripheral type.

BlueRemote includes the device subclass value in its service descriptor record. The value of this parameter doesn't normally matter, but some Bluetooth software may require a specific value here to be able to connect to BlueRemote. If you have trouble connecting BlueRemote, experimenting with the Device Subclass setting may work around the problem.

BlueRemote advertises the *Combo* subclass by default.

Override Device ID

By overriding the Bluetooth Device ID, BlueRemote is able to make your Palm device look like a real Bluetooth peripheral to other devices.

This usually makes it easier to connect your Palm as a peripheral, but it might make it harder to use the Bluetooth connection for anything else than remote control. Therefore, this setting is disabled by default. When the option is disabled, your Palm will still look like a Palm via Bluetooth; it will advertise its peripheral capabilities by the standard service discovery protocol.

If you have trouble connecting BlueRemote to a particular device, try setting this option. Note that the override is only active while BlueRemote is running.

Reset

The *Reset* button restores all settings on the *Advanced Preferences* panel to their default values.

8 Registering BlueRemote

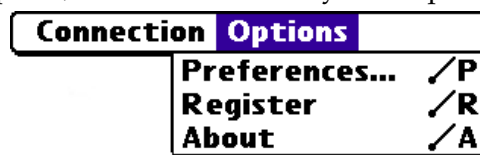
Sometimes when you start up BlueRemote, it greets you with a request to register it.



You are free to try BlueRemote for ten days without registering it. If you want to use it longer, please purchase a registration code at <http://palmgear.com/?xyz=124035>. If you register BlueRemote, you will be able to use it as long as you like, and if a new version of BlueRemote is released, we will provide you with free upgrades for at least one full year.

Your registration code will be 8 characters long and it will consist of a mixture of digits and upper-case letters. **LK8CVB61** is an example of a registration code. Note that the code is tied to your HotSync id; if you later change your HotSync id, your code will not work. In this case, please contact us at support@fnord.hu and describe the problem: we will likely be able to supply you with a replacement code. (Note that we can only give you a limited number of replacement codes.)

Once you obtain a registration key, select *Options--Register* from BlueRemote's menu. If your copy of BlueRemote has expired, it will automatically start up with the registration screen.



The registration form displays your HotSync ID and prompts you to enter your registration code. Make sure you enter the code exactly as it was sent to you.

Enter Registration Code

To obtain a registration code, visit
<http://palmgear.com/?xyz=124035>

HotSync ID:
Lapos

Registration Code:

Thank you for your support!

Register Cancel

If the registration code you entered matches your HotSync id, you will be presented with a Thank You form, and BlueRemote becomes unlocked.

You can verify your registration status and view your registration code at any time by selecting *Options--Register* from the menu.

Thank you for registering BlueRemote!

9 Support Information

If your copy of BlueRemote has expired, please visit <http://palmgear.com/?xyz=124035> and purchase a registration code. See [Section 8](#) for details of the registration process. If a new version of BlueRemote is available, you can download it at the same address.

If you have a problem with BlueRemote, please don't hesitate to write to us at support@fnord.hu. We will do our best to answer every problem and fix every bug you find. Please include in your message the version number of BlueRemote (available in the *Options---About* menu item or in the system launcher, the exact make and model of the Palm device you use, and the operating system you wanted to connect to.

Thank you for very much for using BlueRemote. We hope it suits your needs well.

10 Version History

This section lists the user-visible changes in each public release of BlueRemote.

Version 1.2 (July 26, 2006)

Fixed old-style 5-way navigation on the PC selection form.

Fixed fatal alert ("Chunk over-locked") on BlueRemote's 15th startup.

Version 1.1 (July 20, 2006)

Fixed a bug in which turning off the device at certain points during the execution of BlueRemote would later cause the device to freeze requiring a soft reset.

Version 1.0 (July 15, 2006)

Initial release of BlueRemote.

11 Software License Agreement

This is a legal agreement between you, the end user, and Karoly Lorentey (the "DEVELOPER"). The software programs and documentation ("the SOFTWARE") provided by Karoly Lorentey are licensed to the original customer. Please read this license agreement. Using the SOFTWARE indicates that you accept these terms.

GRANT OF LICENSE:

(A) TRIAL VERSION: the DEVELOPER grants you the nonexclusive right to use the SOFTWARE for a period of no more than ten (10) days, to run consecutively from the date of first use.

(B) FULL VERSION: In exchange for the payment of a registration fee, the DEVELOPER grants you the perpetual nonexclusive right to use the SOFTWARE on a single Palm OS handheld computer. If the SOFTWARE is installed on more than one handheld computer, you must pay an additional registration fee for each copy.

COPYRIGHT: The SOFTWARE is owned by the DEVELOPER and is protected by United States copyright laws and international treaty provisions.

LIMITATIONS: the DEVELOPER retains title to and ownership of the SOFTWARE and the patents, copyrights, trade secrets and other proprietary interests therein. You may not make alterations or modifications to the SOFTWARE. The SOFTWARE may not be sublicensed, rented or leased. Both the license and your right to use the SOFTWARE terminate automatically if you violate any part of this agreement.

TERMINATION: This license is effective until terminated. You may terminate this license at any time by destroying the SOFTWARE and related documentation. The DEVELOPER may terminate this license agreement if you fail to comply with the terms of this license agreement. Upon termination you must destroy the SOFTWARE and related documentation.

DISCLAIMER OF WARRANTY: THE SOFTWARE AND RELATED DOCUMENTATION ARE PROVIDED "AS IS" AND WITHOUT WARRANTY OF ANY KIND. TO THE MAXIMUM EXTENT PERMITTED BY APPLICABLE LAW, THE DEVELOPER DISCLAIMS ALL WARRANTIES, EITHER EXPRESS OR IMPLIED, INCLUDING BUT NOT LIMITED TO IMPLIED

WARRANTIES OF MERCHANTABILITY AND FITNESS FOR A PARTICULAR PURPOSE AND ANY WARRANTY AGAINST INFRINGEMENT, WITH REGARD TO THE SOFTWARE. THE DEVELOPER DOES NOT WARRANT THAT THE FUNCTIONS CONTAINED IN THE SOFTWARE WILL MEET THE REQUIREMENTS, OR THAT THE OPERATION OF THE SOFTWARE WILL BE ERROR-FREE, OR THAT DEFECTS WILL BE CORRECTED. SOME STATES DO NOT ALLOW THE EXCLUSION OF IMPLIED WARRANTIES, SO THE ABOVE EXCLUSION MAY NOT APPLY TO YOU.

LIMITATION OF LIABILITY: The entire liability of the DEVELOPER shall be limited to the amount paid by the customer for the SOFTWARE. To the maximum extent permitted by applicable law, the DEVELOPER and its licensors, distributors, dealers, or suppliers are not liable for any indirect, special, incidental, or consequential damages (including damages for loss of business, loss of profits or investment, or the like). Some states countries do not allow the limitation and/or exclusion of liability for incidental or consequential damages, so the above limitation or exclusion may not apply to you.

ENTIRE AGREEMENT: This Agreement contains the entire agreement and there are no other promises or conditions in any other agreement whether oral or written.

Karoly Lorentey

lorentey@fnord.hu
Teleki Laszlo ter 3. 3/I/6.
1083 Budapest
HUNGARY

12 Legal Notices

Palm OS is a registered trademark of Palm Trademark Holding Company, LLC.

Palm, Treo, Tungsten, LifeDrive and Zire are trademarks or registered trademarks of Palm, Inc.

Graffiti is a registered trademark of PalmSource, Inc.

Bluetooth is a trademark of Bluetooth SIG, Inc., U.S.A.

Microsoft and Windows are registered trademarks of Microsoft Corporation.

Apple is a trademark of Apple Computer, Inc.

Linux is a trademark of Linus Torvalds.

WIDCOMM is a trademark of WIDCOMMinc.

BlueSoleil is a trademark of IVT Corporation.

All other brands, trademarks and logos appearing in this document are the trademarks and logos of their respective owners.