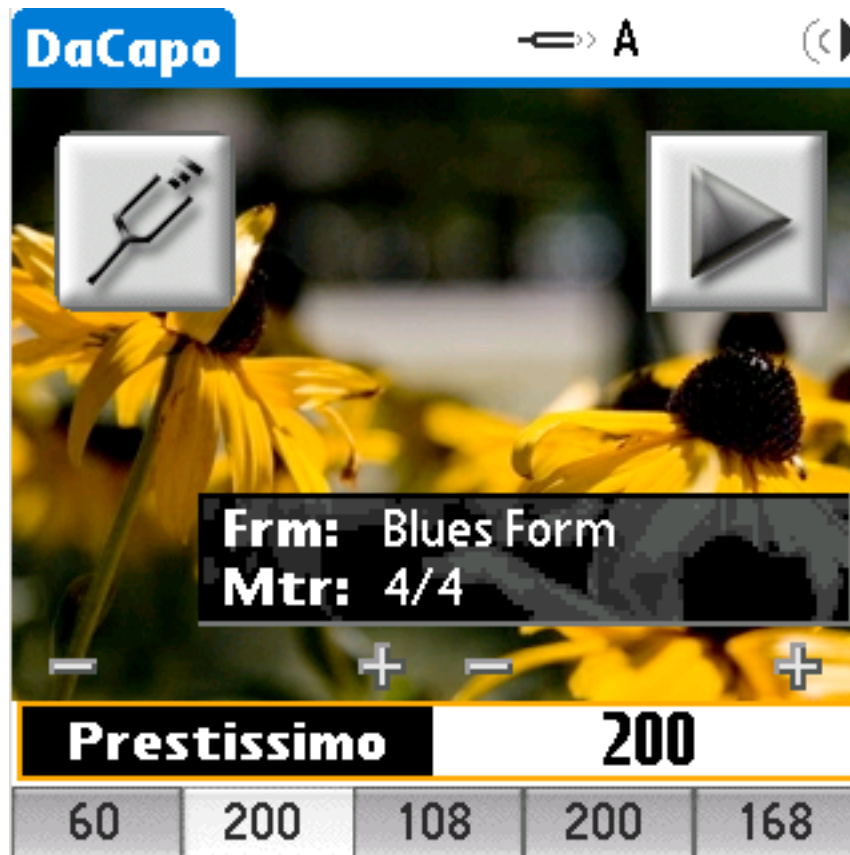




Welcome to DaCapo



Contact: tech and other support:
Our website:
Support site:

support@rogame.com
<http://www.rogame.com>
<http://support.rogame.com>

Copyright © 2007 RoGame Software

Intro

DaCapo is a metronome application conforming to classical metronome layout and its settings. This makes it very usable for classical training, classroom situations and any flavor of modern music. It painstakingly reproduces the range of the classical metronome, but also offers settings by tempo in Italian, e.g. *moderato*. Since this application runs on a handheld device with a touchscreen, much attention has been paid to one-handed usability, as a player might have a bow or plectrum in the other hand. Big buttons and a very simple main screen are the result. Easily available from the main screen are a start/stop button, a tuning pitch button and five fully configurable presets.

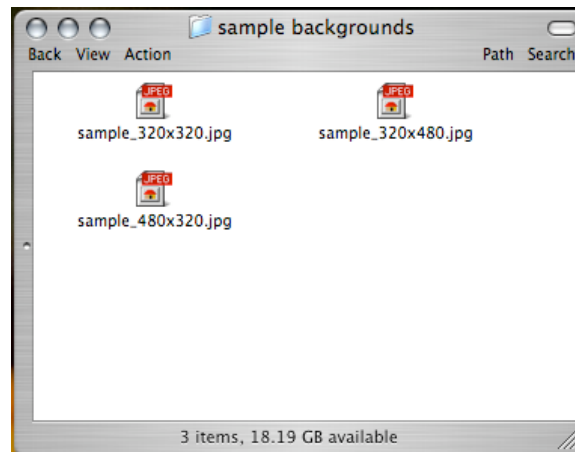
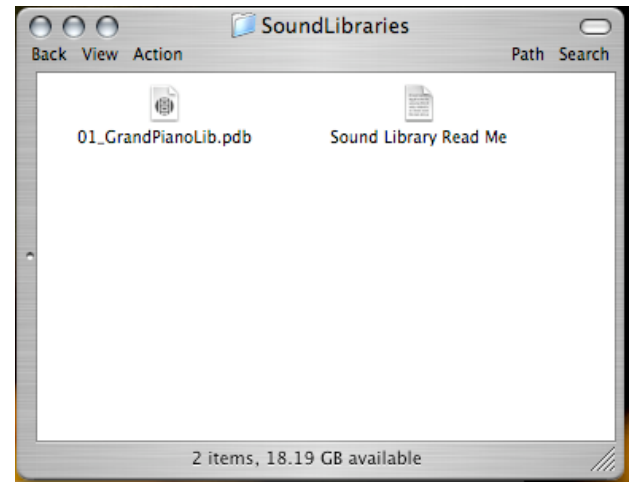
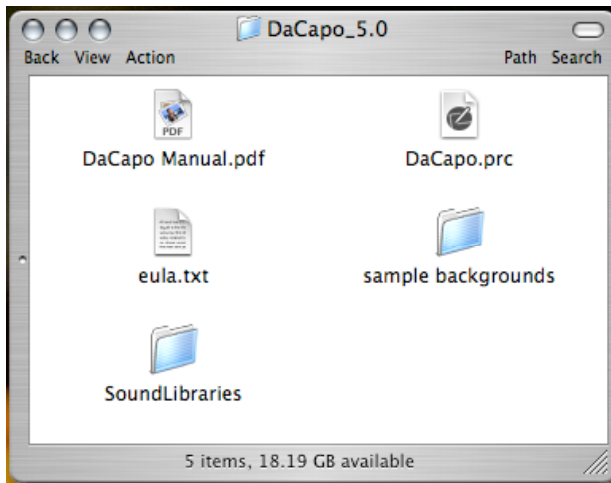
Under the surface DaCapo offers many very advanced possibilities that are implemented using technology not available to the classical gravity driven metronome or even the quartz metronomes that appeared in the late 80s.

DaCapo can play sampled sounds on most current devices. These are actual drum samples that can be configured in different ways like song forms. Song forms are important for the musician practicing current music forms like Rock, Blues, Jazz, Country, Folk, Rap and many more. With DaCapo one has the ability to not only mark the beat, but also the measure and the form of a particular piece of music and the application includes a song form wizard that can pre-select common song forms like the Blues Form, ABA, AABA, etc. This can be done for each of the presets individually and if the wizard doesn't provide what is needed, one can customize a song form to his or her needs.

Another nice touch is the tap input capability. This allows for tapping along with a song and determining the bpm (beats per minute) the song is played in. One can then decide to load a preset with that information and utilize it for practicing.

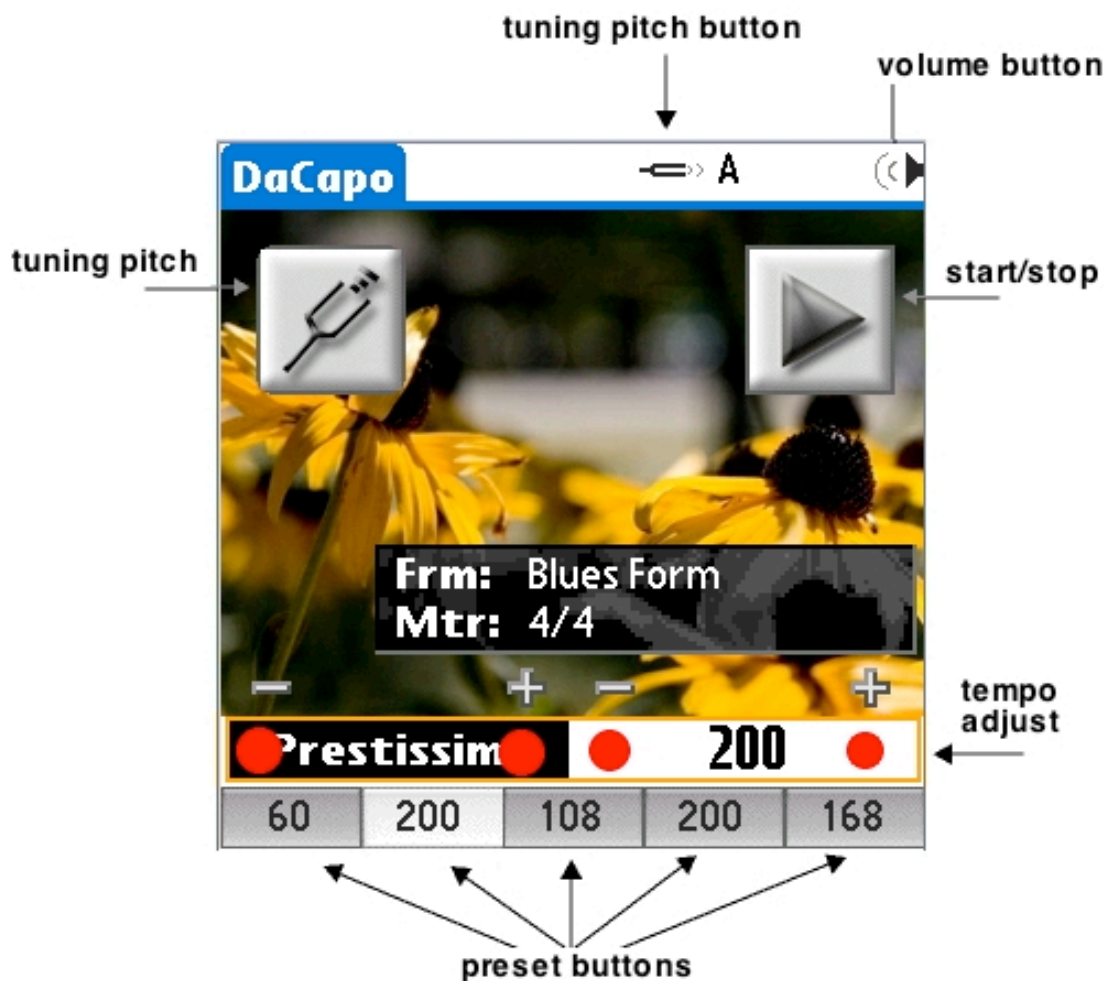
DaCapo has been adopted by lots of musicians, music students, high schools, universities and just plain music enthusiasts as the best choice of a metronome that you can carry with you.

Installation



To run DaCapo on your handheld you must install the file DaCapo.prc from the main folder (top left). To use the Grand Piano sound library (for tuning) also install the file 01_GrandPianoLib.pdb from the folder SoundLibraries (top right). The latter enables you to use piano sounds as tuning pitch, but a device with Palm OS 5.0 and higher is necessary for that. The sample backgrounds folder contains jpgs to guide you in the creation of your own background images and can also be installed. Use the sample_320x320.jpg image for Treos or the sample_320x480 for tall devices like the Tungsten E.

Basic Operation



The Start button starts and stops the metronome at the speed of the current preset. On most devices you can also use the center button of the 5-way pad. Using the up and down arrow keys speeds up or slows down the speed in increments set in Preferences. The left and right arrow keys circle through the presets.

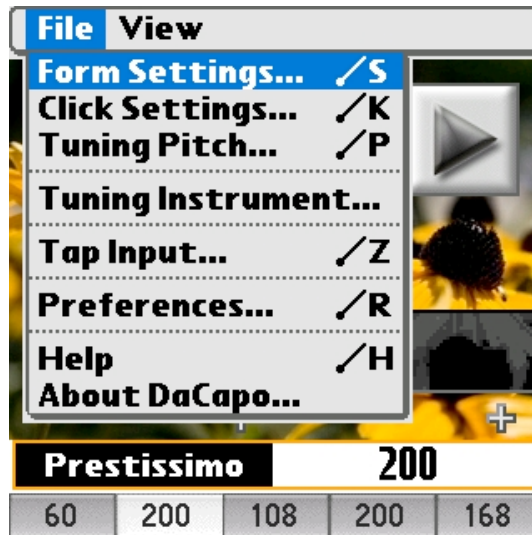
The red circles in the graphic above right under the plus and minus signs are used to speed up or slow down. Tapping the area under the leftmost red circle will slow down by Italian speed description from Prestissimo to Presto. Tapping the area under the second red circle from the left (also in the Italian speed button) would result in Larghissimo, the slowest speed, as the tempi are circled. Tapping below the plus or minus signs in the BPM button to the right (beats per minute) has a similar effect. Tap the right-hand side of the button to speed up, tapping the left-hand side to slow down.

Presets

Most of DaCapo's settings apply to a preset. Five preset buttons are available from the mainscreen and are used to switch between these. To see presets in action just change the tempo. The tempo changes in the tempo button and simultaneously in the preset button. This concept is important as most of the editing operations that can be found under the File menu have the same effect. When you edit the click or the song form for example, you will in fact be editing the preset that is selected at that time. The other presets remain unchanged.

For Form Settings, Click Settings and Tuning Pitch there is an option called "use for all presets". A bit of a misnomer, this setting acts like an additional 6th setting that overrides all individual settings. With it you can as an example set the tuning pitch to A for all presets. If you later un-check the "use for all" option all original settings return for each preset. This can be done for Form and Click Settings as well and independent of each other.

The File Menu



The file menu hosts all editing options available for the individual presets. While tempo adjustments can be done directly from the main screen, there are settings here that require a little more interface and dedicated editing screens.

Form Settings

Preset 2

Song Form: ▼ 8 Measures
Meter: ▼ 4/4

☐ use for all presets

Done

Preset 2

Song Form: ▼ Custom Form

☒ Beat
☒ Measure: ▼ 4 beats
☒ Form: ▼ 8 measures

☐ use for all presets

Done

The third menu item from the File Menu is the song form editor. As shown above (left) there are several form options and meters to choose from (meters not shown). Selecting the “Click Only” item will result in no song form and a uniform click for all beats. All other form selections with exception of “Custom Form) will mark the form with beat, measure and form markers.

If more flexibility is needed the “Custom Form” option can be used. Beat measure or form marker can be turned off or on here and beats per measure and number of measures can be set directly. Again - all of these settings apply only to the current preset.

Click Settings

Preset 2

Click: Pitch Sampled

Pitch: ▼ C

☐ use for all presets

Done

Preset 2

Click: Pitch Sampled

Sampled Sounds:

Beat: ▼ sticks
Measure: ▼ clap
Form: ▼ hihat open

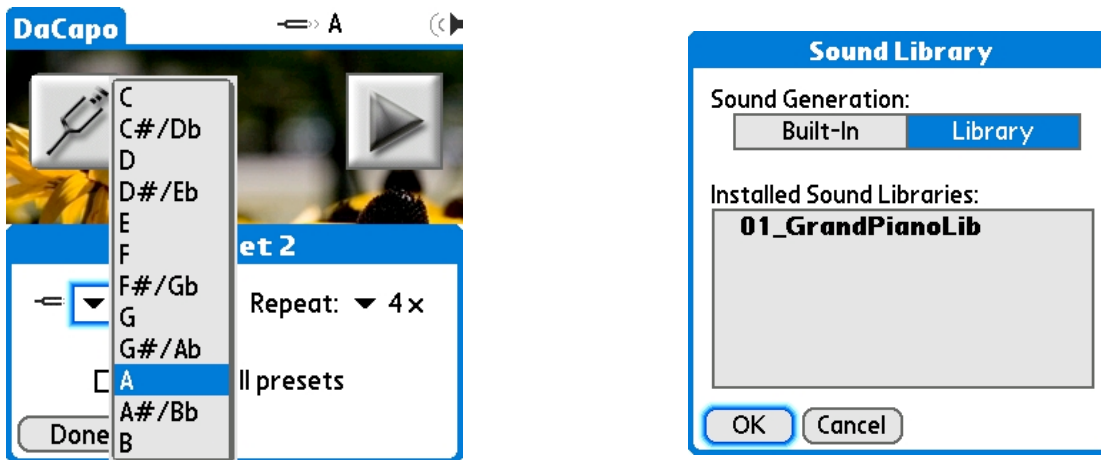
☐ use for all presets

Done

There are two different kinds of click sounds available with DaCapo – pitched sounds and sampled sounds. Pitched sounds are available on all Palm OS devices. The only setting that can be adjusted for these sounds is the pitch. Sampled sounds are available on most Palm OS devices running at least Palm OS 5.0 or higher. As seen above, these sounds can be selected from a popup menu and can be used to mark the beat, measure and form. The beat is here the regular click as when using a classical metronome. Measure and form markers depend on the song form settings. In a 12 measure Blues form with the settings shown above every first beat per measure would be played with the “clap” sound and the first beat of every first measure per form (every 12 measures) would be played using the “hi-hat open” sound. All other (regular) beats are played using the “sticks” sound.

If a regular click is needed throughout the song, these settings can be overridden in the song form screen (s.b.).

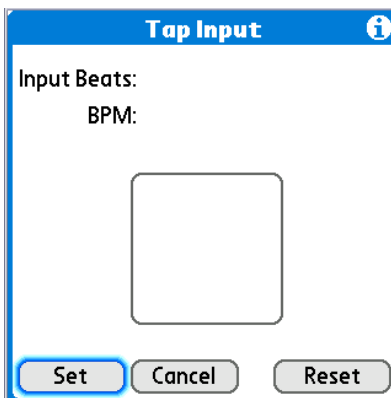
Tuning Pitch



To set the tuning pitch played by the tuning button on the main screen, select the “Tuning Pitch...” menu item from the File menu. The tuning form shown above (left) will appear and allow setting the tuning pitch for the current preset. As a shortcut, the tuning button in the menubar can be used to the same effect. As most settings, the tuning pitch is set for each preset. From the Repeat menu you can select how many times the pitch is to be played once the button was tapped.

The instrument to play the tuning pitch can be chosen by selecting the menu item Tuning Instrument from the File menu. The SoundLibrary 01_GrandPianoLib ships with DaCapo and other libraries are available.

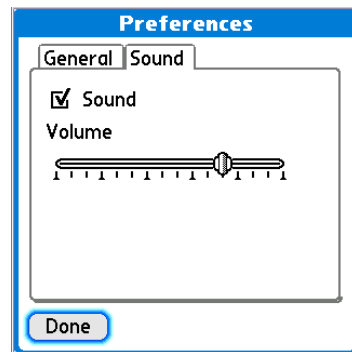
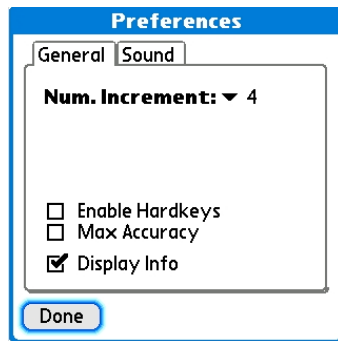
Tap Input



The Tap Input screen allows to tap along with a piece of music, determine its speed and then load the current preset with that speed. It is best to use a stylus for tapping the button in the center of the screen. When starting to tap the speed will adjust to the tapping. The “Reset” button should be used if after a while the speed changes appear to be fairly minimal, but the speed of the sound has not been matched yet.

Tapping the “Set” button will load the current preset with the tapped speed.

Preferences

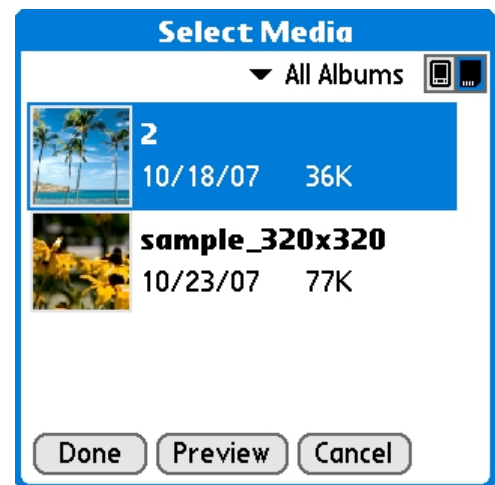
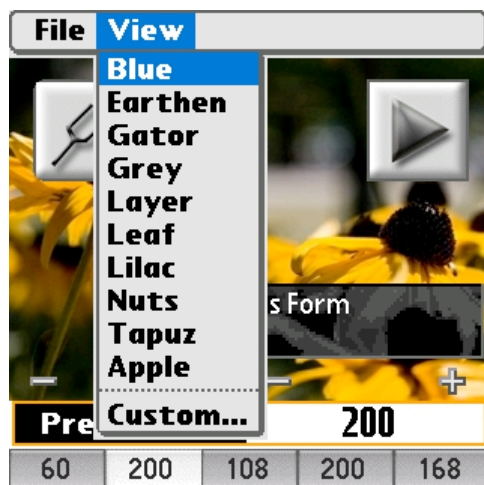


There are general and sound preference tabs (s.a.). In general preferences one can adjust the amount of bpm (beats per minute) the metronome adjusts to when tapping the speed button on the main form once. For older devices one can also enable hard keys here for start/stop and finally there is the “Max. Accuracy” option. The latter forces DaCapo to allow less background processing and is generally not needed.

Display Info allows to show or hide the info box on the main screen. Due to processor speed the latter may take some time on pre-OS-5 devices and one might decide to rather not display it at all.

The sound preferences are simply an on/off switch for sound in general and a volume control.

The View Menu



The first 10 menu items are pattern choices for the main screen’s background and available on all devices. For devices that have image capability the last menu item offers to place an image as background with the image browser (left). Sample images are included in the distribution. If you want to create your own images on the desktop with your band’s logo maybe, the resolution should be 320x320 pixels for Treos (square

displays) and 320x480 pixels for larger handhelds with DIA (i.e. the T5 or LifeDrive). Please note that some clipping will occur at the bottom of the screen where the preset and tempo buttons are located.

Concluding

We hope you enjoy this program and find it useful. If you have suggestions or find anything wrong you can always email us.

support@rogame.com

www.rogame.com

© 2007 RoGame Software

Contact:	tech and other support:	support@rogame.com
	Our website:	http://www.rogame.com
	Support site:	http://support.rogame.com

Copyright © 2007 RoGame Software