

# Lexi

Learn on the Palm PDA

Lexi for PalmOS v3.5  
LexiCreator for Windows v1.4

October 2004

<http://lexi.agrino.org>

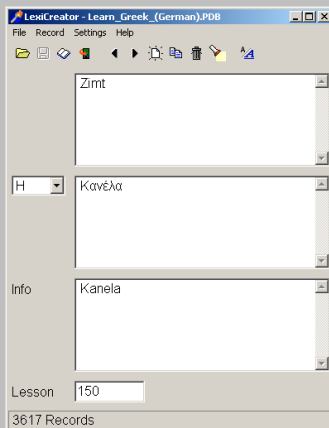
# Contents

<b>Contents .....</b>	<b>2</b>
<b>Introduction .....</b>	<b>3</b>
<b>File.....</b>	<b>4</b>
Open a file.....	4
Create a file.....	4
Edit file properties.....	4
<b>Record.....</b>	<b>5</b>
Create a record.....	5
Modify a record .....	5
Find a record .....	5
Other record handling operations.....	5
<b>Quiz .....</b>	<b>6</b>
Start a quiz.....	6
Running a quiz .....	6
Stop a quiz.....	6
<b>Statistics.....</b>	<b>7</b>
Overall statistics .....	7
Results for the last quiz.....	7
<b>Options .....</b>	<b>8</b>
Font .....	8
Languages (PiLoc support) .....	8
Preferences.....	8
<b>Collaboration.....</b>	<b>9</b>
<b>Internals.....</b>	<b>10</b>
Files.....	10
Limitations.....	10
<b>LexiCreator for Windows.....</b>	<b>11</b>
Convert text files .....	11

# Introduction



**Lexi** is the free flashcard program that helps you to study any topic, anywhere, at your pace. You may use it to memorize vocabulary, or to practice any other subject that can be written as a pair of question and answer on flashcards. The program stores your quiz results and uses them to re-ask you the questions you missed the answer and to compile the most difficult quizzes. This makes sure that learning with Lexi is as effective as possible.



**LexiCreator** is the free desktop program to create and modify databases for Lexi, and to import existing data.

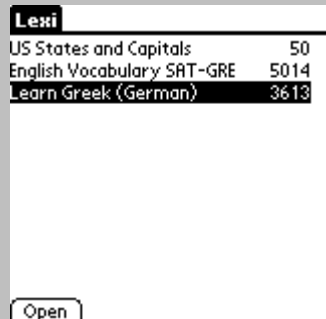
Lexi and LexiCreator are freeware by  
Peter Mosimann, Effretikon, Switzerland.

<http://lexi.agrino.org>  
[peter.mosimann@freesurf.ch](mailto:peter.mosimann@freesurf.ch)

# File

## Open a file

To open a database, select it first, then tap the <Open> button.



## Create a file

To create a file, first tap the menu button.



Tap <New> in the <File> menu, then enter a file name.

After you tap <OK>, the file is created and shown on the file list.

Open it as explained above.

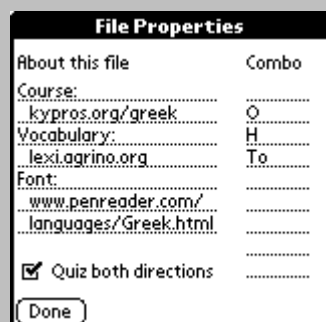


## Edit file properties

To open the properties record select the file name on the file list, then tap the Menu button and select <File> <Properties>.

The properties record contains the following information:

- In the field on the left side you enter any information about the file you think is valuable.
- In the field on the right side you enter the values to choose from in the dropdown combo field. For examples the articles (genders) of a foreign language. If you enter nothing here, the dropdown list won't be displayed at all.
- The checkbox at the bottom controls if question and answer can be swapped during quizzes.



# Record

## Create a record

To create a new record tap the Menu button and select <Record> <New>.

In the upper field you enter the question, or the word in your native language.

In the lower field you enter the answer, or the word in the foreign language.

Select the gender from the dropdown list (if appropriate). If the dropdown list isn't there, then that's because you have not entered values for it (see File Properties.)

To enter additional information you tap the <More> button. Afterwards tap the <Done> button.

To store a record immediately you would tap the <Menu> button and select <Record> <Save>. If you don't, the program will ask you if you want to save before you lose your changes.

## Modify a record

Just tap into the text and change it.

## Find a record

Hit the <Find> button, and enter the text or lesson number to search for.

When you tap the <Next> button, Lexi will search for the next occurrence of the text you entered.

Note for PiLoc users (see Options/Languages later on): the Find dialog uses the codepage of the field you last tapped.

## Other record handling operations

You can also

- Duplicate the current record.
- Delete the current record.
- Mark for next quiz: This resets all the quiz results for the current record, which indirectly forces Lexi to compile the record into the next quiz.



# Quiz

## Start a quiz

To start a quiz, tap on the <Quiz> button.

The first time you tap on this button, there is no quiz available yet. You will be asked to specify what quiz to compile:

- Enter the lesson numbers to choose the records from.
- Enter the quiz size.

Tap the <OK> button to compile and start the quiz.

Usually when you tap the <Quiz> button there is already a quiz. You will get some statistics on how you performed in the current quiz (for an explanation of the results refer to the statistics chapter). And you will be asked what to do:

- Compile a new quiz. The current quiz results will be stored, the quiz itself will be dumped, and you will be prompted to enter lesson numbers and quiz size for a new quiz (as shown above).
- Continue last quiz. The current quiz will be continued where it was stopped.
- Restart last quiz. The current quiz results will be stored, and the quiz will start as if it was a new quiz.

While compiling, Lexi selects records based on two criteria:

- right to wrong ratio
- time elapsed since last quiz.

The same formula is used during a quiz.

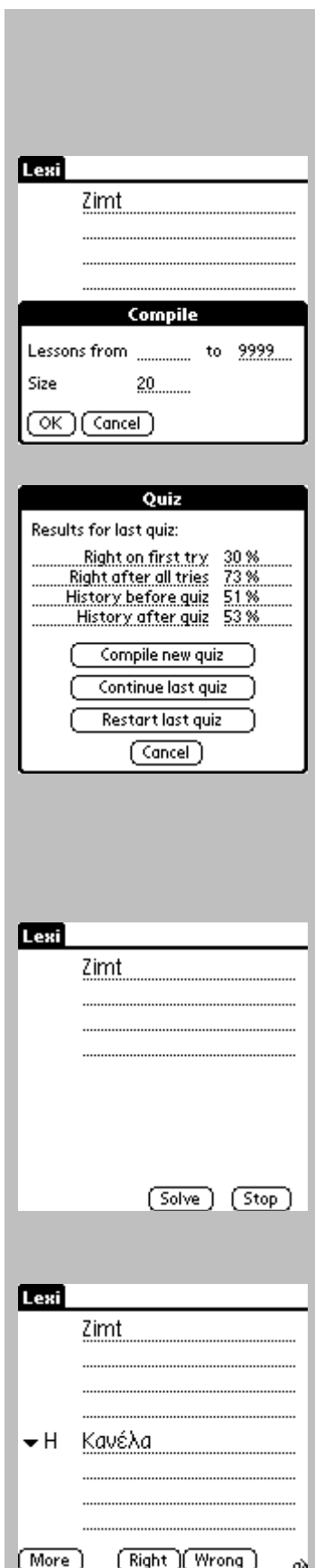
## Running a quiz

After you have started the quiz, Lexi shows you a question (or an answer). Think about the answer, then get the solution by tapping on the <Solve> button.

When you think your answer is right, tap on the <Right> button, otherwise tap on the <Wrong> button. If your answer was right, but you think you needed too much time, press the <Wrong> button.

## Stop a quiz

To stop the quiz tap on the <Stop> button. It is visible when a question is shown.



# Statistics

There are two places where you get statistics. There is an immediate statistic for the current quiz when you tap the Quiz button, and there is an overall statistic for the whole file when you select <Record> <Statistics>.

Disclaimer: These statistics are by-products of your learning process. They are not the result of a test. Don't expect them to tell you how good you know your subject. This would need thorough testing.

## Overall statistics

In the menu, select <Record> <Statistics>.

Statistics			
by last learnt:		by percent right:	
2004/1	852	80-85%	8
2003/12	833	75-80%	19
2003/11	1471	70-75%	563
2003/10	369	65-70%	1491
2003/9	192	60-65%	1179
2003/8	9	55-60%	409
		50-55%	52
		45-50%	4
		worse	1
		average	64%
Close			

- **By last learnt**  
Shows in which month the records were last learned or repeated. For the topmost month, this is also the number of records that were learned or repeated in that month. For the other months, the number of records decreases while you repeat records. This statistic gives you an idea of how recently you repeated the records.
- **By percent right**  
Shows the distribution of your records' quiz results – which percentage of your answers you considered right. This statistic gives an impression of
  - how difficult the records are
  - how rigorous you judge your answers.

These figures hardly change, as Lexi does its best to find the most difficult questions, which you will fail to answer over and over again.

## Results for the last quiz

You get the statistics for the current quiz when you tap the Quiz button. The figures mean:

- **Right on first try:** percentage of correct answers when the question was first asked at the beginning of this quiz.
- **Right after all tries:** percentage of correct answers since last compilation or restart.
- **History before quiz:** percentage of correct answers the records in this quiz had before compilation.
- **History after quiz:** percentage of correct answers the records in this quiz have now.

Quiz statistics are reset when you compile and when you restart a quiz.

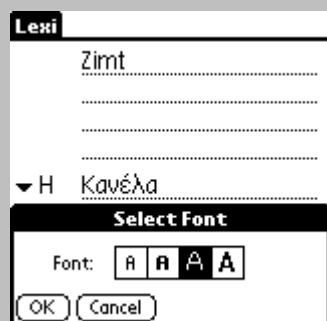
Quiz	
Results for last quiz:	
Right on first try	30 %
Right after all tries	73 %
History before quiz	51 %
History after quiz	53 %
Compile new quiz	
Continue last quiz	
Restart last quiz	
Cancel	

# Options

These settings are stored between Lexi sessions.

## Font

To change font sizes tap the <Menu> button, then select <Options> <Font>.



## Languages (PiLoc support)

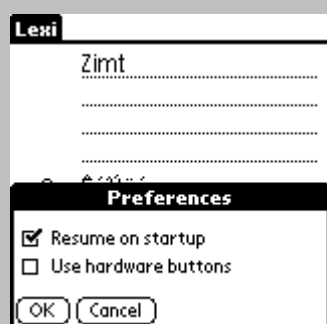
With PiLoc installed, you can assign two different PiLoc fonts to the upper (question, native) and the lower (answer and combo, foreign) fields. You can buy languages for your PDA from Paragon software (<http://www.penreader.com>). If you have no localization kit installed or a localization kit other than PiLoc, Lexi will use your system default codepage for both the upper and lower fields.



## Preferences

**Resume on startup:** Lexi returns to where it was when you left it the last time (open the most recently open file, show the most recently shown record, ask the most recently asked question).

**Use hardware buttons:** Run quizzes and browse without using a pen. Hardware button mapping:



### <Date Book>

More  
Compile  
Solve  
More  
Done

### <Address>

Prior  
Continue  
Stop  
Right  
Mark

### <To Do>

Next  
Restart  
  
Wrong

### <Memo Pad>

Quiz  
Cancel



# Collaboration

Lexi is intended for collaboration. You may share your databases with others, or you may install databases that others have created. There are two ways to pass files from one PDA to another:

- Beam a database directly from your PDA.
- Take a database from the backup directory of your desktop PC, pass it to somebody else, who then installs it to his PDA. (Important note: Every database has two companion files. For example, "French.pdb" has "French\_p.pdb" and "French\_c.pdb". When you give a file to somebody else, you only give "French.pdb".)

There is no sophisticated synchronization mechanism in Lexi. Installation and beaming of a database overwrites the data on the target system completely. All changes that were made to the file on the target device are lost. Only the quiz and the quiz results stay untouched.

To make sure not to lose any data, the following "collaboration scenarios" are possible:

- You are the author: Create your own database - and share it with others.
- Somebody else is the author: You install the database. Don't maintain it yourself. Install maintenance releases of the same database as they become available.
- You become the author: Install the database once. From then on, maintain it yourself. There is no way back, as further updates would overwrite your modifications.
- Incremental collaboration: You are a group of authors, and authorship changes constantly. There can be only one responsible author at the same time. Make sure you all know who's turn it is to maintain the database. The one who takes over authorship makes sure he/she has the most recent file, enhances it, then shares it with the others, and passes responsibility to the next author.

Please note that after the installation of a large number of new records (think of hundreds or thousands) your PDA might show the message "Verifying..." for several minutes. This is usually a one-time annoyance.

# Internals

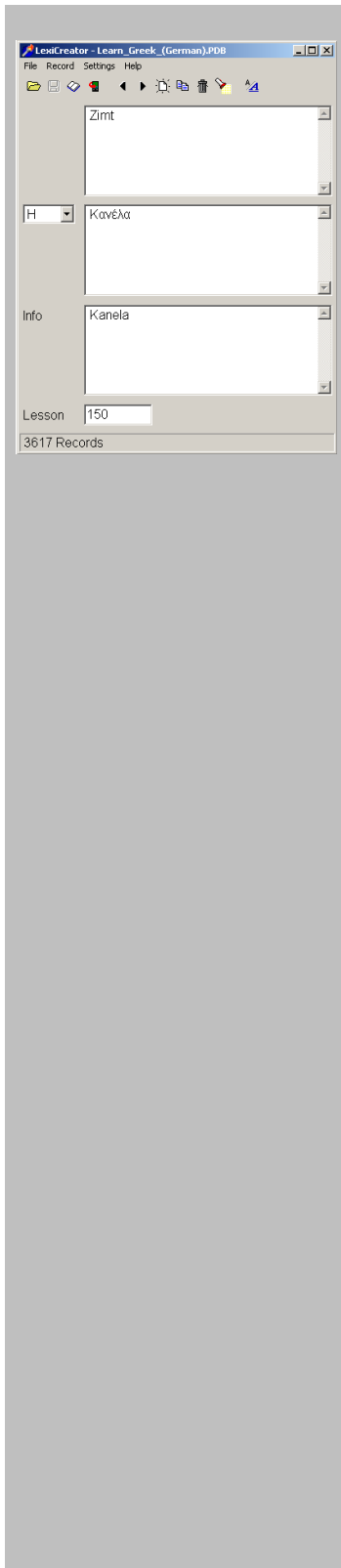
## Files

Every database has three files. For example:

- French.pdb contains the vocabulary itself. It's the only file you should give to somebody else.
- French\_p.pdb contains your quiz results. This is where Lexi stores when and how often you replied correctly and incorrectly to which question in a quiz.
- French\_c.pdb contains your current quiz.

## Limitations

- Number of databases: 100
- Number of records in a database: 64K
- Length of each text field: 500 characters
- Number of lessons in a database: 9999
- Number of records in a quiz: 99



# LexiCreator for Windows

LexiCreator is the Windows version of Lexi. You can use it to

- create new databases
- modify existing databases
- convert text files to databases (and vice versa).

But you can't run quizzes with the Windows version.

LexiCreator reads and writes Lexi databases in pdb format from your backup directory. To copy a new or modified database to your PDA you need to install it using the Palm Install Tool. There is no synchronization between Palm and Desktop beyond backup and installation.

## Convert text files

Open your text file in LexiCreator, then save it as a Palm database. The fields in the source file can be separated by any character: tabulator, semicolon, comma, or anything else. A carriage return / line feed is expected at the end of each record. The fields of each record are expected in the following order:

- lesson number
- question
- combo (article, gender, etc.)
- answer
- info (pronunciation, etymology...)

Empty fields are ignored. Maximum field size see Lexi limitations. \n in text fields marks a line break.

Please note: every time you convert a text file to a Lexi database, this is a brand new database to Lexi, even when it has the same name as a database that already exists on your PDA. If you install it to your PDA, Lexi will probably drop your past quiz results. So you shouldn't use LexiCreator to copy databases back and forth constantly between your Palm and your Spreadsheet for example. You should only use LexiCreator to change your existing Lexi databases on the PC.