

multiClock

Manual

Copyright © 1999/2003



Visit our homepage at
www.palmadd.com
for the latest version and other applications.

Send any comments to support@palmadd.com

multiClock is distributed as shareware!

You may use this application with all features for a 30 days trial period. If you find the program useful and continue to use it, you are required to register. The registered version does not display the reminder screens.

The registration fee is only US\$ 10

Please register at
PalmGear.com

SUPPORT THE SHAREWARE CONCEPT!

Introduction

Thank you for trying multiClock.

multiClock is a multi-function digital alarm clock. It displays the time in large, easy to read digits. Some of the features include easy to use

- three programmable alarms with selectable snooze function, different alarm types, 10 different alarm sounds, auto-snooze and auto-off feature
- support of all system time (12H, 24H) and date formats
- a 2nd time zone display with 23 predefined time zone names and editable display name
- graphical moon phase display, age of moon and date of next full moon
- day countdown timer
- volume adjustments
- color support (on color devices)
- supports Palm OS™ 5 High Density (320x320) and Sony CLIÉ™ High Resolution (320x320)
- runs on any Palm Computing® handheld with at least Palm OS™ 3.0 (including Palm III series, Sony CLIÉ™, Handspring™ Visor™, IBM WorkPad) and is Palm OS™ 5 compatible

Installation

Before you can install multiClock on your Palm you will need to decompress the downloaded zip file. Use a decompression utility to unpack the file. We recommend StuffIt Expander which is available for Microsoft Windows™ and Mac OS™. To download StuffIt Expander, visit Aladdin Software (www.aladdinsys.com).

Once you have decompressed the zip file, you need to schedule the application for HotSync in order to transfer it to your Palm. The easiest way to accomplish this is with the "Install Tool" that comes with the Palm desktop software.

Install the appropriate file for your device:

<i>multiClock.prc</i>	for standard resolution devices running Palm OS 3.0 or higher (Palm III, Palm IIIc, Palm V, Handspring Visor, Palm Zire) requires about 35K of free memory
<i>multiClockHR.prc</i>	for high resolution color devices (Palm Tungsten, Sony CLIE) requires about 75K of free memory



If you are using Palm Desktop 3.x or 4.x for Windows:

- Start the 'Install Tool'
- click on the "Add..." button
- select the file(s) to install



If you are using Palm Desktop 2.1 for Macintosh:

- Start the 'HotSync Manager'
- Go to the 'HotSync' menu and select

'Install...'

- Click on the 'Add to List' button
- Select the file(s) to install.

Next time you put your Palm in its cradle and select 'HotSync', the selected file(s) will automatically be installed.

For additional information on how to install applications, please consult your Palm™ Handbook.

Usage

The Main Screen

Once multiClock has been installed, tap on its icon to launch it. If you have an unregistered copy an information screen is displayed every time you start the application.



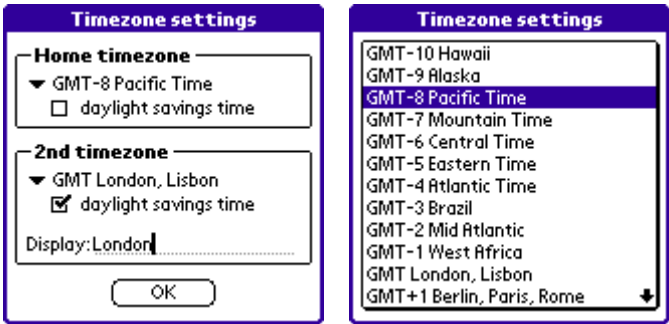
Tapping the arrow in the upper right corner of the screen will enter the Desk Clock Mode. Tap the arrow again to return to normal mode.



→ Important

After starting the application the first time, set up the correct time zones.

Time Zone Settings



Home time zone

Select the correct time zone relative to GMT for your home location from the list of predefined time zones. Use the checkbox to indicate that daylight savings time is being applied. The home time zone is used to calculate the moon phase.

2nd time zone

Select the 2nd time zone from the list of predefined time zones and enter the name you like to display in the main window. Use the checkbox to indicate that daylight savings time is being applied.

Alarms

MultiClock has three independent alarms. To set up an alarm, click one of the three alarm button at the bottom of the screen.

Set Alarm 1

8 : 00 AM PM

Su Mo **Tu** We Th Fr Sa

☐ one time only

Type: ▼ Normal Alarm

Message:
Alarm 1

Rings: ▼ 3 Pause: ▼ 1s

Sound: ▼ Alarm

OK Cancel Test

<i>Time & Weekdays</i>	To change an alarm time in the settings dialog, tap on any digit and use the up or down arrow to increase or decrease the number. To toggle between AM and PM tap on the AM/PM indicator. The alarm times are relative to local time (home time). You can select any weekdays for the alarm. Example: To exclude weekends from a daily alarm select the weekday Monday to Friday and deselect Saturday and Sunday.
<i>'one time only' Checkbox</i>	If the "one time only" checkbox is set, the alarm will only occur once regardless of other settings.
<i>Type</i>	<u>Normal Alarm</u> A popup window is displayed and the alarm sound is played. If "normal alarm" is selected, different alarm sounds with adjustable pause and repeats can be played. Press the Test-Button to hear the selected sound settings.

	<p><u>Silent Alarm</u> A popup window is displayed without sound. This is useful for situations where the sound will be disturbing.</p> <p><u>Lock Device</u> The device is locked at the alarm time. No screen output and no sound.</p> <p><u>Beep Beep</u> Only two short beeps without displaying anything.</p> <p><u>Sound Only</u> No message will be displayed. Note: Snooze is deactivated when using this option.</p>
Message	Type a message to display.
Rings	<p>Select the number of rings for the selected sound. Available values are: 1, 2, 3, 4, 5, 10, 20, 30, 50</p> <p>➔ Attention: Selecting huge values can drain your batteries!</p>
Pause	<p>Select the pause between the rings. Available values are: none, 1s, 2s, 3s, 4s, 5s. To repeat the alarms, turn on 'auto-snooze' in the preferences dialog.</p>
Sound	Select one of the installed midi sounds.

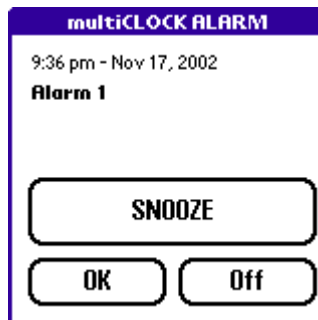
The checkbox left to the alarm time in the main window must be checked to enable the alarm. You can activate or deactivate any alarm at any time. If you change the time of any alarm the checkbox is enabled automatically.

Tap on the time display in the main window to display the next scheduled alarm:



When an alarm is triggered, a dialog with three buttons will appear. Press

- **Ok** ... to close the dialog.
- **Off** ... to turn the device off.
- **Snooze** ... to closes the dialog and set a new alarm depending on the snooze time specified in the Preferences.



The alarm sound can be stopped by tapping the screen or by pressing the up or down hardware button.

Phase of the Moon

Age: The current age of the moon.

Full: The date of the next full moon.



The phase and age of the moon display uses an approximation method to reduce the code size. This approximation is not 100% accurate and the real phase and age can differ up to one day.

Volume Settings

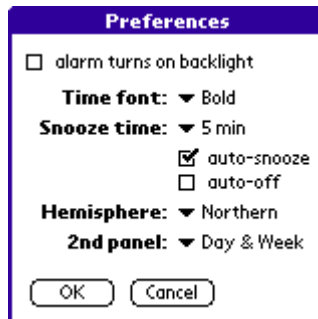


Use this dialog to adjust the volume of the sounds. Select 0 for no sound, 1 for quiet sounds, 8 for loud sounds. There are three volume settings:

Alarm	the volume of the alarm sound
System	the volume of the system sounds (errors, warnings, clicks, ...)
Master	the master volume for ALL sounds

Press the "Test" button to check the changed volume for the alarm sound or any other system sound.

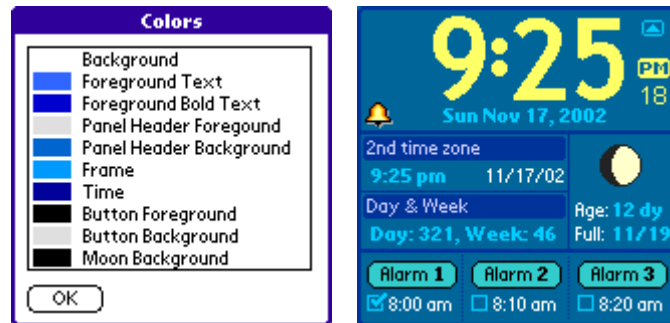
Preferences



<i>alarm turns on backlight</i>	If checked, the backlight is automatically turned on if an alarm is triggered. This option is not available on all devices.
<i>Time font</i>	Select the standard bold font or a digital clock font for the time display.
<i>Snooze time</i>	Select the time for the snooze function, i.e. the time after an alarm is repeated if you press "Snooze" or for the repeating alarm.
<i>auto-snooze</i>	Selecting auto-snooze repeats the alarm after the selected snooze time automatically.
<i>auto-off</i>	If auto-off is checked, the device turns itself off after the alarm sound has been played.
<i>Moon phase hemisphere</i>	Select the hemisphere for the moon phase display.
<i>2nd panel</i>	Select if the voltage, the day countdown timer, Swatch Internet Time or the day & week number is displayed in the second panel.

Colors

To change the colors of multiClock, select 'Colors...' from the menu. You will see a list of different items and the current color for each item.



To change a color, select an item and a color selection dialog will appear. After tapping the Ok Button the new color scheme is used.

Registration

Palmadd applications for Palm™ handhelds are distributed as shareware. You can use the applications with all features for a trial period of 30 days. The applications do not expire but when you continue using them and you're 100% satisfied you have to register. The registered versions have no shareware reminder screens and all updates will be free for registered users.

Please register at PalmGear.com (www.palmgear.com). The registration fee for multiClock is only

US\$ 10



www.palmgear.com

PalmGear

830 Crescent Centre Dr Suite 460 Franklin
TN 37067, USA

Sales: 615.261.4324

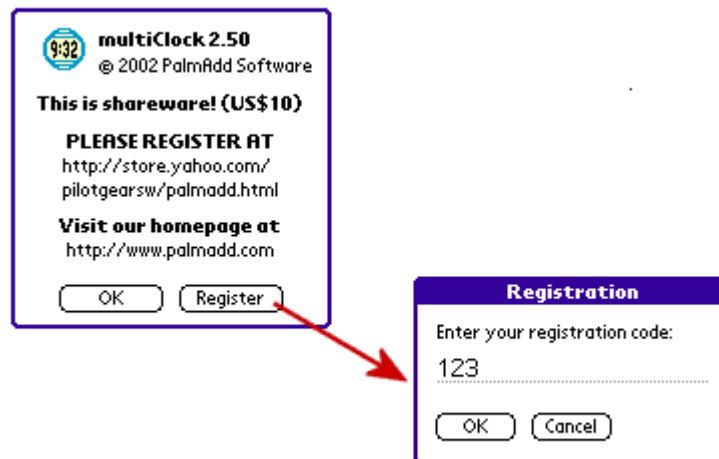
9 a.m. - 5 p.m. (CST) M-F

software-orders@palmgear.com

How to Unlock the Application

Once you have purchased the full version, you will receive an unlock code:

- Start the application on you handheld by tapping its icon.
- Tap the 'Register' button on the about screen or choose 'Registration' from the menu.
- Make sure that the Text entry line is active, which is indicated by a flashing cursor. If it is not, click on the text entry line first.
- Enter the key.
- Press the 'Ok' button. If the unlock key is accepted you will get a message from the program. If not, make sure you have entered the unlock key properly.



Contact

If you have comments, suggestions or problems the best way to contact us is through email at

support@palmadd.com

Please include the following information when contacting technical support:

- please use "multiClock" for the subject
- your name and email address
- the program that has the bug and the version number of the program
- the handheld vendor and model that you are using and the Palm OS™ version number
- a brief description of the problem
- an explanation of how we can replicate the error

Disclaimer

You may copy and distribute this shareware package but you may not distribute any of the files separately. You may not disassemble, decompile, reverse engineer, modify or translate the application and/or manual without permission.

The software is provided "as is", and without any warranty, expressed or implied, as to non-infringement, merchantability or fitness for any particular purpose. The user accepts full responsibility for any damage, consequential or otherwise resulting from its use.

This software is distributed as shareware. Palmadd Software grants you a non-exclusive license to evaluate the software. After evaluating the software, you are required to remove the software or buy an unlock code. Once registered, you may continue to use the software. The registered version of the application or the unlock code, given at the time of purchase, may not be sold or given to others.

Palm, the Palm logo, Palm OS, Palm Computing, Graffiti, HotSync, and the Palm Platform Compatible Logo are registered trademarks of Palm, Inc. All other brands and product names may be trademarks or registered trademarks of their respective holders.

Sony, CLIE, and Memory Stick are registered trademarks of Sony Inc.

Handspring and Springboard are registered trademarks of Handspring Inc.