

NetSelect Beta Version for PalmOS

Switch between Network entries

Minimum PalmOS 3.1

Installation

You can install NetSelect as a Hack or standalone Verion.

If you are using a hackmaster please install
netselect-hack.prs.

Otherwise netselet.prc

A short introduction about hacks:

<http://www.dseifert.com/hacks>

Beta Version License

You use this Beta version on your own risk!

You can use this beta for two weeks without any limitations.

**At the end of this period you can win one of 20 versions
as a beta tester.**

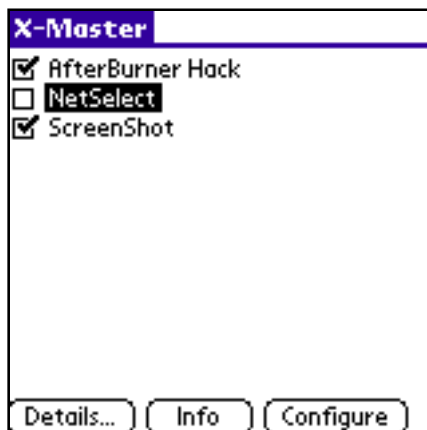
Requirements:

- **minimum one feedback with:**
 - **which palm do you use?**
 - **which OS?**
 - **Error report**
- **which hackmaster do you use?**
- **how often do you use NetSelect?**

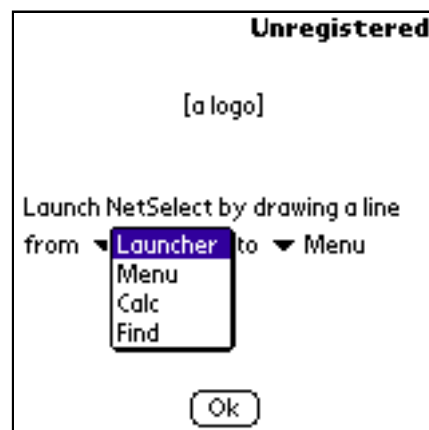
Optional:

- **Suggested price**
- **Note (between 1 and 6, 1 = very good)**

NetSelect Beta Configuration



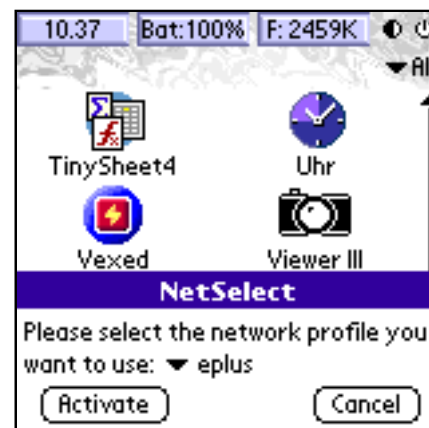
1.
Open NetSelect or your hackmaster and choose configure.



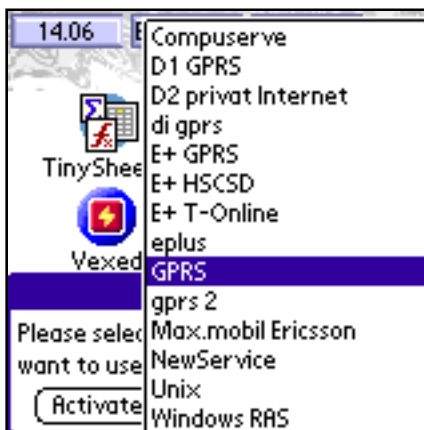
2.
Configure your stroke to activate NetSelect.



3.
Launch NetSelect with your configured stroke from any application (e.g here from menu to calculator).



4.
NetSelect is launched with the network entry which is active at the moment.



5.
Choose your network entry from the popup list. Klick Activate to switch to the choosen entry.
Ready to go!

Attention

It is important you have valid entries on your palm. Each network entry belongs to a connection entry. These settings have to be correct.

Support

support@79bmedia.com

License

With the installation you agree to our license.
For further information read the [license.txt](#).