



Welcome to SilkScreen



Contact: tech and other support:
Our website:
Support site:

support@rogame.com
<http://www.rogame.com>
<http://support.rogame.com>

Written by Arthur Roofs
Copyright © 2003-5 RoGame Software



Welcome to SilkScreen

This program lets you perform all of the functions normally associated with the bottom part of a Palm device - the silkscreen - in the main display area. That includes the icons as well as Virtual Graffiti directly on the display area. It also serves as an application launcher and has many other useful features. Please, be advised that SilkScreen **requires Palm OS 5**.

Generally Speaking

SilkScreen reserves tiny spaces in the four corners and at the edges of the display. By tapping in these spaces certain operations can be performed in any application if SilkScreen is enabled (it is also possible to exclude applications from this functionality). These tap areas are shown as dark rectangles in SilkScreen but are **invisible in other programs!** There are the four tap corners and several tap bars. There are many things to discover though and we will start by walking you through the interface one panel after the other. You get to each panel by tapping its tab. The four panels are named: Base, Keys, Graffiti and Apps.

The Base Panel



This is where you switch SilkScreen on or off and always the first thing you see when you launch SilkScreen. Note the dark rectangles in the corners and at the bottom. This is where you tap. Again – these areas are invisible in other applications!

Corners

As you can see in the middle, each corner has a check box to the left of its description and a popup menu to the right. Unchecking a corner makes it inactive and the menu selection to the right determines its action. When a tap area is inactive, the dark rectangle will disappear.

The round action indicators display an icon representing the action for each tap corner or the icon of an application to be launched. The actions shown in the picture below are available for each corner:



Let's take a look at these one by one.

SilkScreen Actions

Menu Action

This used to be and still is sometimes the venerable menu icon on devices with a silkscreen area. It will display the menubar of any application that has one.

Home Action

This used to be the home icon on a silkscreen and tapping it always gets you back to the designated applications launcher.

Favorite

This is a silkscreen icon that appeared only on a couple of Palm handhelds and allowed one to launch a “favorite” application. To set this one would have to go to the “Buttons” panel of the Prefs application. If your device has a favorite icon and can be configured in Buttons, this might be useful to you.

Find

This used to be located in the bottom right corner of a silkscreen and brings up the Find dialog.

Command

This brings up the Command Bar on your handheld (s.b.).



SnapBack

This launches the application that was active before the current one. It is very useful if you do some work in two applications and need to go back and forth a lot. The designated application launcher is excluded from this functionality, because in most cases you don't want to go back there.

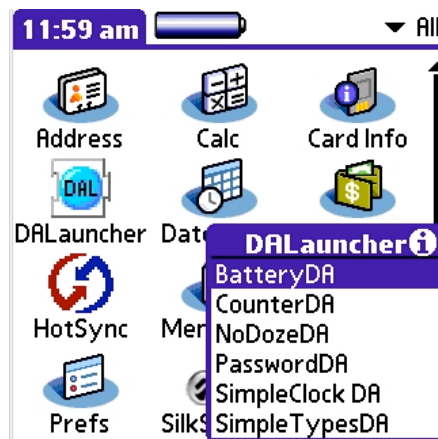
Graffiti

This action will toggle the Virtual Graffiti state. It is a good idea to always also have a hard key action for Virtual Graffiti.

DAs

SilkScreen comes with DALauncher by Yamada Tatsushi and five DAs from RoGame Software. If you install and enable DALauncher, you can select DAs as a corner or hard key action. Please note that DALauncher

has its own manual which is located in “dal50 Folder”. You are strongly encouraged to read it.



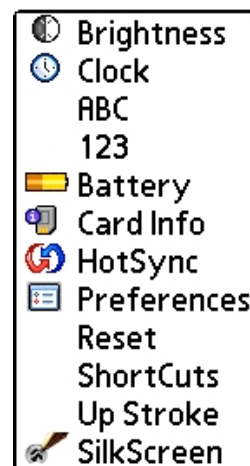
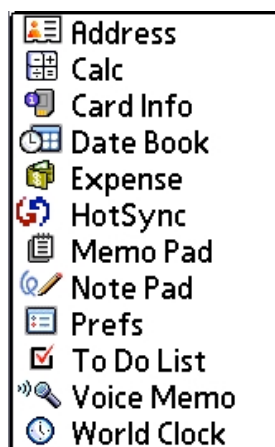
Apps Menu

This will trigger the applications menu at the left half of your screen. The applications and utilities menus can be scrolled with the up and down buttons on your device and also respond to the more modern five-button pads. You can scroll in both directions which is useful if you trigger the menu and want to launch an application whose name begins with a z. Simply scroll up.

By default SilkScreen has the DateBook key set up to trigger the applications menu when pressed briefly. The ToDo key triggers the SilkScreen (utilities) menu. When you trigger these there is no selection until you start scrolling down or up. If you just want the menu to go away and have a five-button pad just press the left or right button. To select press the button in the middle.

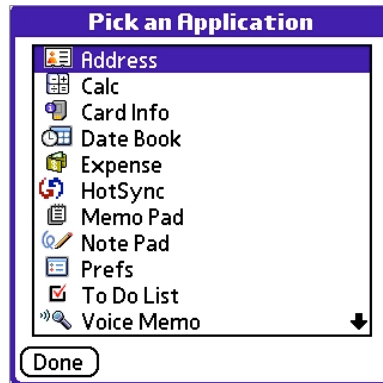
Utilities Menu

This triggers the utilities menu on the right part of the screen. It includes some useful shortcuts.

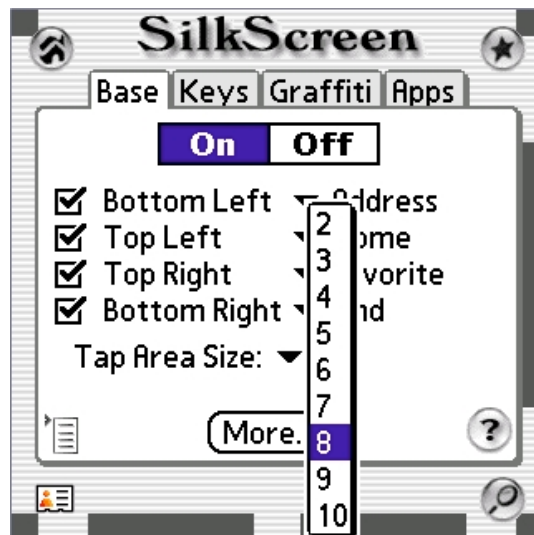


Applications...

This pops up the Applications Picker which you can see in the picture below. The application you pick here will be launched when you tap on that corner. To indicate your choice a small icon of the application will also appear in that corner of the Base panel.



More Base Panel



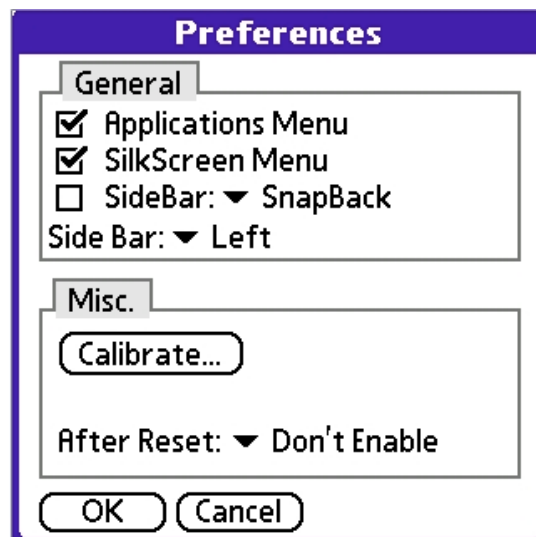
Now things make a little more sense maybe. As you can see, the bottom left corner is designated to launch the Contacts application and otherwise we have the typical setup usually found on a regular TungstenIT silkscreen with the home icon at the top left corner, the favorite icon at the top right and the find icon at the bottom right. In the picture above you can also see the Tap Area Size menu popped and there is an additional tap area at the right edge. The latter is called the SideBar and can be configured in Preferences (s.b.). The other two tap areas we haven't discussed are the two lengthy bars at the

very bottom. These always do the same. The left one triggers the applications menu (s.a.) and the right one triggers the SilkScreen menu (or utilities menu). There are instances though where you might not want these and that is where the More button comes into play. It gets you to the Preferences dialog. We'll get to that in a little bit.

Other than that there is a menu icon in the lower left part of the screen. SilkScreen has menus, albeit not many. This button makes it somewhat easier on some devices to get to them. Specifically so, if you have no action configured to show the menu.

The last control on this panel is the question mark. It will get you to the right page of the online help and is available on all panels. If you want to read the entire help file – it is not very long – you can use the menu button and chose Help from the Options menu.

Preferences



Every application has a Preferences dialog and so does SilkScreen. Here are some options that you will not need all the time. First the General panel:

General

Here you have switches (checkmarks) to disable the applications menu and the SilkScreen menu. Those are always triggered by the lengthy rectangles at the

bottom of the SilkScreen application. You might decide you don't want these and could always trigger the menus from a corner or a hard key.

Then there is the sidebar. It can be enabled by checking the box and can be assigned the exact same actions that are available for the corners (s.a.).

Additionally you may chose to have this one appear on either side of the screen. In the figure above we chose the right side.

Misc.

Two options here. If you feel that it is very hard to hit the tap areas right on, you can recalibrate the digitizer of your device by tapping the Calibrate... button.

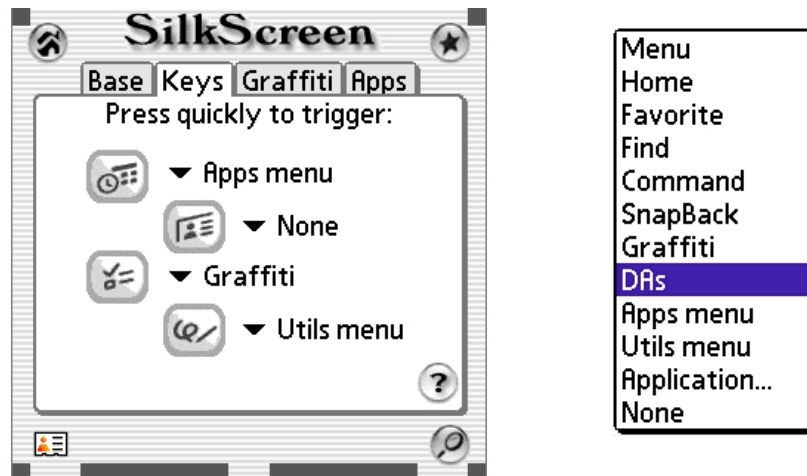
This is the very same thing you did when you first received your handheld.

Once you're done SilkScreen will re-launch itself automatically.

The options available under After Reset are basically do and don't ;) It is up to you what you want to do here. If you experience problems, this should be the first thing to turn off.

Well – that takes care of the Base panel and we are ready to move onto the next one, the Keys panel.

The Keys Panel



SilkScreen allows to to perform additional actions when pressing the hard keys on your device. The way to do it is to press very briefly for an action defined by SilkScreen. That way the regular function of that key is still the same when you hold the key down a bit longer. The actions you can perform with the hard keys Are the same as the ones available for the corners (s.a.) with the addition of the last entry "None". If you don't want a key to perform an y additional actions, select None from the menu.

It is usually a good idea to have one hard key configured to toggle Virtual

Graffiti if you use SilkScreen's Virtual Graffiti at all.

The Graffiti Panel



SilkScreen allows you to use what we call Virtual Graffiti on your device. That means that you can write directly on the display area of your device instead of the silkscreen area only. This comes in really handy if you have a Tungsten and don't want to expand the device only to write a name or such. In order to enable Virtual Graffiti you must toggle it to on and once you're done you'll switch it off again. This can be done by triggering the Graffiti action via a tap area or a hard key.

Here are some pointers as to how this works:

- Virtual Graffiti switches itself off automatically when you launch another application.
- You can designate an application to automatically enter into Virtual Graffiti mode in the Apps panel
- If you want to tap a button or select another text input field while you are in Virtual Graffiti, just tap and hold for a half second. Experiment a little with this. It is a very useful feature.

On this panel you'll find some configuration options. If you check Echo, the movements of your stylus on the screen will be drawn in the color you see on the right half of the picture. Tapping the orange rectangle will bring up a color picker, so you can pick another color if you like. Some devices can use CrossOver. That means a character started on the left half of the screen will become capitalized if it crosses into the right half of the screen. On devices with Graffiti2 this is not necessary as all characters drawn in the middle third are capitalized.

The Thick Line option does exactly that – it echoes the movements of your stylus in a thicker line than if not checked.

The indicator shows you whether Virtual Graffiti is active.

The Apps Panel



SilkScreen's Apps panel offers you some options to configure how the applications menu is displayed and allows to tweak things a bit generally. Let's take a look at the list of applications shown above. The list has five columns that show:

1. Whether an application is enabled for SilkScreen functionality. This is important for games and such where you want maximum performance. Disabling that application (tap the Enable button and make sure the checkmark disappears) will tell SilkScreen not to work in the background. Obviously you won't have access to any of the menus, corner or hard keys actions in that case. Should you ever suspect a conflict between SilkScreen and another application, you might want to disable that application as well.
2. The second column has no other function than to indicate whether an application resides on a memory card. If so, you will see a little memory card icon in this place.
3. The third column indicates the Favorite status of an application. If you take a look just below the applications list in the picture above you will find the label Show: with a popup menu to the right of it. The popup can be set to All – as in the picture – or to Favorites. If Favorites is selected only the applications that show a little heart in the third column will be displayed in the applications menu.
4. The fourth column indicates the AutoGraffiti status which you can toggle with the AutoGraf button. The little G indicates that the application will automatically launch in Virtual Graffiti mode. It doesn't matter whether you use SilkScreen to launch it or not.
5. Well – the last column is just the application's name ;)

On some devices you will also see a control not in the graphic above. It is a checkbox called ROM. If you uncheck it, only applications **not** built into your device's ROM memory will appear in the applications list.

Launching Applications on the Treo 650



The side button which is located under the volume control on the Treo 650 (bottom of the white field above and next to Apps Menu) can be used to trigger the applications or the SilkScreen menus. In either case when a menu is visible, the volume controller scrolls the menu and a second pressing of the side key then selects the highlighted menu item. In this way SilkScreen's application launcher can be driven one-handedly.

Special Note for Treo 600/650 users

Yes - your Treo has Graffiti and you can use it with SilkScreen. Here is a quick "how to":

- Start SilkScreen and set it to ON
- Go to the Keys tab and select Graffiti from the popup menu for one of the hard keys
- Try it right then and there - pressing the key very briefly should switch on Graffiti and you should be able to write on the screen, although with no effect for now.
 - Once you verified that Virtual Graffiti works in SilkScreen, again briefly press the button to turn it off and go to the MemoPad/Memos application
 - Tap the New button to open a new text file and then very briefly again press the hard button you have previously selected to toggle Virtual Graffiti. Start writing.

Some Gotchas:

- The Treo600 has Graffiti2 - not Graffiti!

So there is no upstroke for shift. Instead an upstroke triggers a so-called punctuation shift, which means the device will wait until you enter an appropriate response. Tons of people have reset their Treos and worse, because they believed Graffiti was broken.

READ THE MANUAL FOR MORE INFORMATION REGARDING GRAFFITI2.

DAs - DALauncher

DALauncher is included in the distribution as an *optional* installation. It is a program that can be used in conjunction with SilkScreen. This is *not* for Newbies. If you don't already know what a DA is, please, don't install! A manual for DALauncher is included in the folder "dal50 Folder". Please note that some of the DAs found in the Sample DAs folder will only work on Japanese devices. The DAs found in the folder "RoGame DAs" should work on all devices. RoGame Software does not make or support DALauncher - so don't send us any email ;)

Dynamic Input Area (DIA)

Several newer devices have a so-called dynamic input area. The Tungsten 3 for example. SilkScreen is designed to work well with these devices and allows you to take full advantage of an expanded screen. If you haven't done so in the past, however, it is necessary that you upload the two prc files found in T3_DIA_Compatibility_prcs.zip to your device. Please read the accompanying information carefully and HotSync both applications at the same time.

Removing /Uninstalling SilkScreen

Before removing SilkScreen make sure to disable the application by tapping the Off button on the main screen. Preferably use Destaller Pro or Destaller Lite.

Concluding

Well – that about covers this little ReadMe. As you can see, there are a lot of options and possible settings with SilkScreen. Don't feel that you have to make use of them all at once. Select the ones useful to you – even disable some things ;)

We had a great time creating this application and believe that it can be very useful. We might, however, not have thought of everything or maybe there is a feature you'd like to see in a future release. If so, let us know ;)

support@rogame.com

www.rogame.com
© 2003 RoGame Software

Contact:	tech and other support:	support@rogame.com
	Our website:	http://www.rogame.com
	Support site:	http://support.rogame.com

Written by Arthur Roolfs
Copyright © 2003-5 RoGame Software