



**QuizApp v 2.0 User Guide**

**AdroitMobile Software**

## Copyright Notice and Terms of Use

© 2000 AdroitMobile Software, a subsidiary of PDA Verticals Corporation. All rights reserved.

### QuizApp v. 2.0 User Guide

This manual, as well as the software described in it, is furnished under license and may only be used in accordance with the terms of such license. The information in this manual is furnished for informational use only, is subject to change without notice, and should not be construed as a commitment by AdroitMobile Software or PDA Verticals Corporation. AdroitMobile Software and PDA Verticals Corporation assume no responsibility or liability for any errors or inaccuracies that may appear in this documentation.

You may make and distribute unlimited copies of this documentation and the QuizApp application, provided that you copy and distribute therewith copies of the electronic end user license agreement, the application installer exactly as provided by AdroitMobile Software, copyright and other proprietary notices included with the QuizApp application, and the following attribution statement "QuizApp © 2000 AdroitMobile Software, a subsidiary of PDA Verticals Corporation. All rights reserved."

AdroitMobile Software, and PDA Verticals Corporation are trademarks of PDA Verticals Corporation.

Written and designed at AdroitMobile Software, 11415 NE 128<sup>th</sup> Street, Suite B, Kirkland, WA 98034, USA.

# Table of Contents

<b>Introduction</b>	4
<b>Getting Started: Installing Kaplan-To-Go</b>	5
<b>System Requirements</b>	6
<b>Using Kaplan-To-Go</b>	7
Starting the Program	7
Selecting a Module	7
Beginning a Quiz	8
Building a Custom Quiz	8
Taking a Quiz	9
Viewing Results	11
<b>Additional Features</b>	12
Using the Search Function	12
Beaming Kaplan-To-Go and Kaplan-To-Go modules	13
<b>Contact Information</b>	14
Technical Support	14
Feedback	14

# Introduction

## What is QuizApp?

QuizApp is the leading learning and trivia platform for PDAs. With support for both multiple choice and flashcard modules, you can prepare for a test, brush up on trivia, or take a quiz anytime, anywhere.

## Available Modules

### QuizApp.com

QuizApp.com (<http://www.quizapp.com>) is the community dedicated to the creation and distribution of QuizApp modules. Be sure to check QuizApp.com regularly for new QuizApp modules.

### Looking for something that's not on QuizApp.com?

Have a suggestion for a module that is not available? E-mail us at [modules@quizapp.com](mailto:modules@quizapp.com) with your idea.

## Getting Started: Installing QuizApp

Once you have downloaded QuizApp, installing the software onto your PDA is easy – just follow the four easy steps below.

- Step One: Install the software that comes with your PDA
- Step Two: Unzip the file
- Step Three: Select the files you want to install
- Step Four: HotSync your PDA to install the files

### Step One: Install the software that comes with your PDA

1. In order to install software onto your PDA, you must have already installed the software that came with your PDA onto your computer.
2. If you haven't installed this software yet, put the CD that came with your PDA into your CD-ROM drive.
3. Follow the onscreen instructions provided by the manufacturer to install the software.

### Step Two: Unzip the file

1. Once you have the software installed, the next step is unzipping the file that you downloaded. Because files can take a while to download from the Internet, we have used WinZip to zip the files together to speed the download and make it more convenient.
2. To unzip the file, you must have WinZip installed on your computer. If you don't have WinZip, you can download and install it free from <http://www.winzip.com>.
3. Once you have WinZip installed, start WinZip by double-clicking on the icon or selecting it from your Start → Programs menu.
4. If the WinZip Wizard appears on your screen, continue by selecting WinZip Classic in the bottom left corner of that box. If not, proceed to the next step.
5. Select Open Archive from the File Menu.
6. Browse your computer to find the file that you downloaded, select that file, and click open.

### Step Three: Select the files you want to install

1. You will see a list of filenames in this window. The filenames that end in .prc and .pdb are the files that you will need to install on your PDA. To install these files, double click on each file to bring up the Palm Install Tool.
2. If you only HotSync one PDA to the computer you are using, proceed to the next step. If you HotSync more than one PDA to the computer you are using, a drop down menu will appear asking you to select which PDA you would like to install this file on. Select the username from the drop-down menu and hit OK.

3. You should now be looking at the Install Tool window. Verify that the file you double-clicked on is listed in the window and click Done.
4. Repeat steps 1-3 for each file that you want to install onto your PDA.

### **Step Four: HotSync your PDA to install the files**

1. Once you have double-clicked on all the files you want to install on your PDA and verified that they are listed in the Install Tool window, click Done to close the Install Tool window (if you haven't done so already).
2. To install the files, HotSync your PDA by placing your PDA in the cradle or connecting the HotSync cable and pressing the HotSync button.
3. Once the HotSync is complete, verify the files are on your PDA by looking in the applications screen.

## **System Requirements**

To install and use QuizApp on your PDA, you will need:

- Palm OS 3.0 or higher
- Approximately 200 KB of RAM

# Using QuizApp

## Starting the Program

1. To start QuizApp, go to the Applications launcher by tapping on the silkscreen Home button in the top left of the Graffiti area of your PDA.
2. You should now see icons representing all the applications you have installed on your Palm. Tap on the QuizApp icon (see Figure 1) to launch the application. If you don't see the application, tap the upper right corner of the screen and make sure that All is selected, then look again.



Figure 1: Tap the QuizApp icon

## Selecting a Module

1. Once you have launched the application, you will be taken to the main screen for QuizApp. On this screen, you will see two drop down menus and a list of modules that you will use to select your module. The drop-down menus allow you to select criteria that will determine which modules are shown in the list.
  - a. Select Review: This drop down allows you to choose whether to show all modules, only flashcard modules, or only multiple-choice modules (see Figure 2a).
  - b. Select a Category: This drop down allows you to choose whether to show all modules or only modules in specific categories (see Figure 2b).
  - c. Select a Module: This list displays the modules that you have installed on your PDA and can be filtered according to the choices you make in the above menus (see Figure 2c).

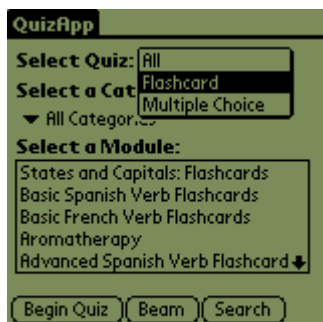


Figure 2a: Select a Review

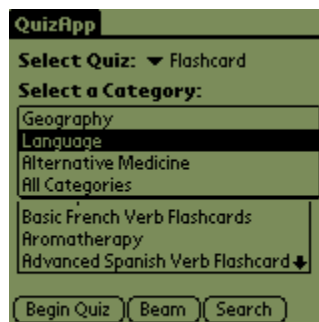


Figure 2b: Select a Category

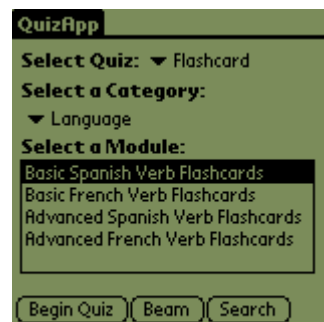


Figure 2c: Select a Module

2. Once you have set the drop down menus above to display the module types that you are interested in, select a module by tapping on the module name.
3. Tap on Begin Review to go to the next screen.

## Beginning a Quiz

1. Once you tap Begin Review, the Start a Review popup screen will come up allowing you to make choices on how you want to structure your review.
2. At the top of the popup, you will see the category and name of the module selected and the number of questions available in that module.
3. The first drop down menu is labeled Number to Ask. You can use this drop down to select how many questions you want in this particular review. If you want a number of questions other than the choices listed, tap on the line next to the drop down menu and input the number you want using the stylus (see Figure 3a).
4. The second blank (labeled Start with) allows you to select which question number you would like to begin your review with. The default selection is question number one. If you would like to start with a different number, tap on the number one and input the number you would like to start with using the stylus (see Figure 3a).
5. The final drop down on this screen is labeled Order. This drop down allows you to pick either Sequential or Random to determine the order that the questions appear in this review session (see Figure 3b).

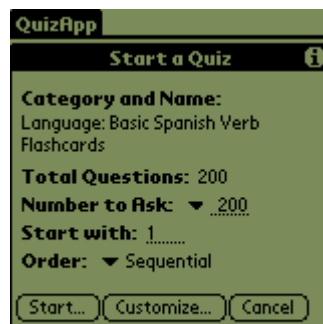


Figure 3a: Start a Review

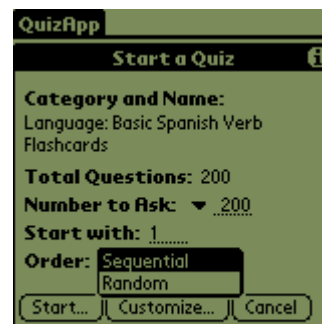


Figure 3b: Select the Order

6. Once you have made your choices and are happy with the results, tap Start to begin your review.
7. You will also see the Customize button. Tapping this button allows you to build a custom quiz. For information on this, see the next section – Building a Custom Quiz.

## Building a Custom Quiz

1. QuizApp allows users to customize quizzes by selecting the mix of questions in certain categories.
2. To build a custom quiz, tap Customize on the bottom of the Start a Review popup to go to the Build My Own Review screen.
3. This screen lists each of the question categories in this module and two columns on the right that are labeled Num and Max.



4. To select the number of questions, tap on the Num column and input the number of questions desired using the stylus. If you want to enter the maximum number of questions for that category, just tap on the Max number and it will automatically be put in the Num column.

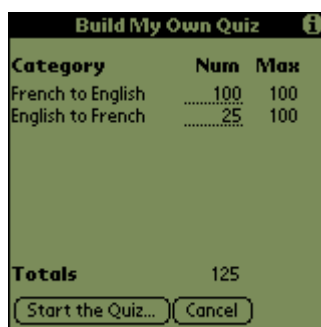


Figure 4: Build a Custom Quiz

5. Once you have the selections the way you want them, tap Start the Review from the bottom of the screen.

## Taking a Quiz

### Multiple Choice

1. When taking a multiple-choice quiz, you will see the question followed by a series of answers. Read the question carefully and tap on the answer you feel best answers the question (see Figure 5a).
2. After tapping on an answer, you will be shown the answer screen telling you whether your answer was correct or incorrect and then giving you a short explanation about the correct answer (see Figure 5b).

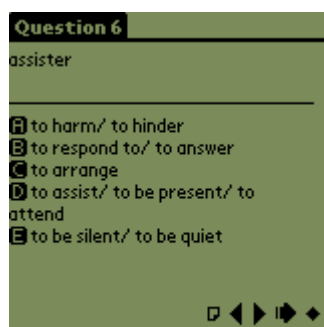


Figure 5a: Multiple Choice Question Screen

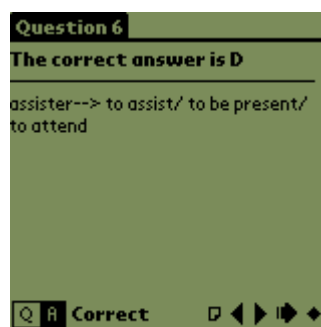


Figure 5b: Multiple Choice Answer Screen

### Flashcards

1. When taking a flashcard quiz, the first screen you will see is the front side of the card describing the subject of the card and the categories of the material on the flip side of the card (see Figure 6a)
2. To view the flip side of the card, either tap the "A" on the bottom of the screen to get a comprehensive review with all the material (see Figure 6b) on the flip side of the

card or tap a specific category for a quick review of just that category's information (see Figure 6c).

3. Once you view the flip side of the card, you will see the Correct checkbox at the bottom of the card. Tapping this checkbox marks that you got this flashcard correct, while leaving it blank marks that you got this flashcard incorrect.

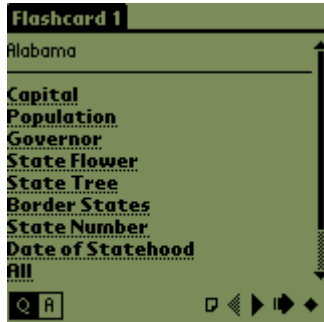


Figure 6a: Flashcard Front Side

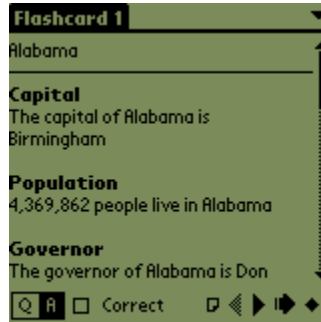


Figure 6b: All Flashcard Flip Side

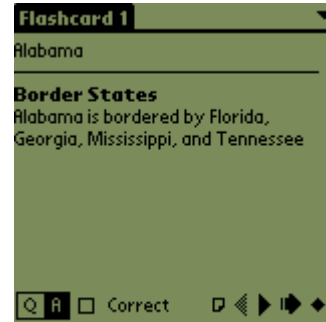


Figure 6c: Individual Flashcard Flip Side

## Navigation Tools

When taking a Multiple Choice or Flashcard quiz, you can navigate through the questions using the navigation icons in the bottom right of the screen. Tap the left arrow to go back to the previous question. Tap the right arrow to go forward to the next question. Tap the double right arrow to go to the next question that you have yet to answer. Tap the diamond on the far left to stop the session and be taken to the results screen.

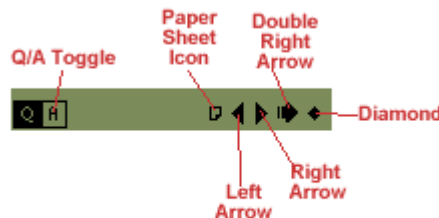


Figure 7: Navigation Tools

## Special Features

When taking a quiz, there are special features that you can use to maximize the value of your quiz.

**Customizable Notes:** Multiple choice questions and flashcards allow users to store personal notes with each question. This allows you to keep track on mnemonics, hints, or other items that you want to store with each question or card. To store a personal note, tap on the Paper Sheet icon to the left of the navigation tools to bring up the Notes pop-up screen. Enter your note using the stylus and click Done when you are finished. Notice that once you enter a note the Paper Sheet icon will change to show that a note has been stored for this question.

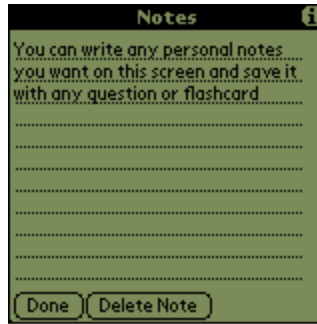


Figure 8: Customizable Notes

**Links:** Throughout the modules you may notice underlined words or phrases similar to looking at an Internet browser. This underlined text is a link allowing you to tap on the underlined text to be taken to a different question or passage discussing the underlined text in more detail. After tapping on a link and viewing the question or passage, you can either follow a different link to a new question or passage or tap the back button to go back to the original card or question.

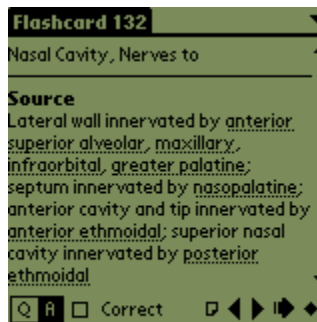


Figure 9: Linked Text

## Viewing Results

1. Once you are finished taking a quiz, tap the Diamond on the bottom right of the screen.
2. You will be warned that you are about to end the session. Tap End the Session to continue to the results screen.
3. The results screen shows you four columns (see Figure 10):
  - a. The category breakdown of the questions taken
  - b. The number correct or incorrect in each category
  - c. The percentage correct in that category
4. At the bottom of the screen, you will see the aggregate numbers (see Figure 10).
5. Once you are finished viewing the results, tap OK to return to the main application screen.
6. In addition, once back in the main application screen, you can pull down the menu and select Statistics to view the results from your previous session.

Session Statistics			
Module: States and Capitals: Flashcards			
Category	Cor	Tot	%
Northeast	6	9	66
Southeast	10	13	76
Southwest	4	5	80
Midwest	12	14	85
West	6	9	66
<b>Totals</b>	38	50	76
OK			

Figure 10: Results Screen

## Additional Features

### Using the Search Function

1. From the main application screen, you can perform a full text search of the modules installed on your PDA to find questions on specific topics.
2. Tap Search in the bottom right to bring up the Search pop-up box.
3. In the pop-up, enter the text you want to search for.
4. Below the text entry blank, you will see a drop-down titled Modules to search. By tapping on this drop down, you can select which modules you want to search.
5. Tap All modules to search all the modules on your device. Tap Selected Module to search only the module you highlighted prior to tapping on Search. Tap Specific Categories to bring up the Select button that allows you to select the specific categories for your search.
6. Once you have designated your search parameters, tap Start Search.
7. When you tap Start Search, your search begins and you will enter the Search Results screen. From this screen, you can tap on specific results to see that specific question only or tap on Run a Review at the bottom of the screen to take a quiz containing only the questions in your search results.

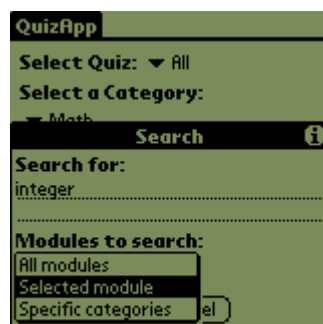


Figure 11a: Search Terms

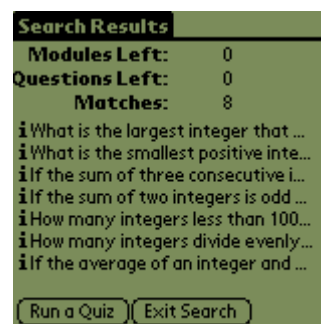


Figure 11b: Search Results

## Beaming Kaplan-To-Go and Kaplan-To-Go Modules

1. From the main application screen, tap Beam at the bottom of the screen to bring up the Beaming pop-up screen.
2. To beam the Kaplan-To-Go application, tap on Beam the Kaplan-To-Go Application and point your device at a receiving device.
3. To beam a Kaplan-To-Go module, tap Beam the current module to beam the module you highlighted prior to tapping on Beam in the main application screen and point your device at a receiving device.
4. **Note:** While the Kaplan To Go application is freely beamable, there are some modules where beaming is not allowed. If you select one of these modules and attempt to beam it, a screen will come up informing you that beaming has not been enabled for that module.

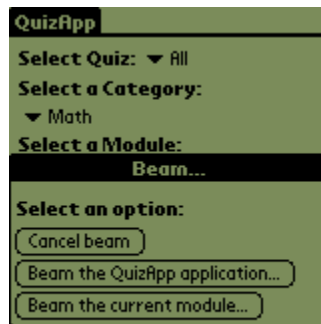


Figure 12: Beam

## Contact Information

### Technical Support:

For technical support, send e-mail to [support@quizapp.com](mailto:support@quizapp.com).

### Feedback

We want to hear what you have to say! Send e-mail with any comments, suggestions, and feedback to [comments@quizapp.com](mailto:comments@quizapp.com).