

# ShellExtension 2.0

## User manual





ShellExtension is freeware, i.e., you don't need to pay for it. You can download it from <http://forum.xda-developers.com/showpost.php?p=00&postcount=000>  
Except for the language module are modifications, in any way, not allowed.

Use **ShellExtension** on your own risk. I don't offer any warranty and I'm not responsible for damages caused by **ShellExtension** (I'm not perfect...). But in the worst case you have to reinstall SPB Mobile Shell...

## Table of contents

Overview	5
Software Features	5
Definition's	6
Installation	7
System Requirements	7
Installing ShellExtension	7
Update ShellExtension	7
Uninstall ShellExtension	8
Updating or reinstalling SPB Mobile Shell	8
Getting Started	9
Main Window	9
Options Section...	11
Extract qa_layouts.dat	11
Import into qa_layouts.dat	11
Restoring qa_layouts_bup.dat	12
Customize Now screens...	13
All...	13
Prof... (Professional now-screen)	13
LifeSt... (Lifestyle now-screen)	13
New (now screens)	13
Contact... (Contacts tab)	13
Add now screens	13
Now screens settings	15
Remove now screen	15
Page count in ...	15
Customize menu...	15
Change dialer contacts...	15
Customize menu bar:	17
Change button count on menu bar.	17
Edit the menu button('s) function.	17
Disable the recycle bin.	17
Edit the menu button('s) function screen	17

Change menu bar button function or add carousel screen.	19
Find your icon number:	20
Change the text of buttons, now-screens and carousel-screens.	21
Change the carousel view	23
Make the SPB folders mutable (or not)	24
Language Packs	25
Language overview:	25
Walk true to make your own translation:	25
Credits	26

## Overview

**ShellExtension** modifies the SPB mobile shell and extends it with extra features. It does its modification on the fly. There are no files that are overwritten. It changes the files inside. So, in most cases it can change your modified SPB shell.

## Software Features

### Options:

A lot of SPB Shell users who want to mod there shell has problems with extracting en compacting the qa\_layouts.dat file. With **ShellExtension** it's possible to extract all the files from the qa\_layouts.dat Zip file to the Qa\_layout folder in the SPB Shell programs folder. And Compact files into the qa\_layouts.dat from the ZipToDat folder.  
(the folders are automatically generated by ShellExtension)

The first time **ShellExtension** launches; it makes a backup of the qa\_layouts.dat file. (see qa\_layouts\_bup.dat in the SPB Shell root.) In the <Options> section you can restore that file overriding the qa\_layouts.dat file without warnings. *Be careful! it restores to the point you first launched ShellExtension. With other words all the mods installed after that point will be removed. Please, also see "Restoring qa\_layouts\_bup.dat".*

### Now-screen:

With **ShellExtension** it's possible to make 6 extra Lifestyle "lookalike" screens. You can give each screen the name, shortcut icon, page count and menu bar you want. **ShellExtension** also makes the new screen visible on the carousel and makes a shortcut to that screen in the tools section of the SPB menu.

### Menu bar:

With **ShellExtension** you can change the menu bar of the now-screens. You can make one menu bar for all the now-screens or you can change the menu bar for each now-screen separately.

You can put from 0 to 4 buttons on a menu bar. *The button can start functions made by SPB Shell like: -ToDay -Lifestyle Home, -Professional Home, the Now-screens you made, -Favorites Programs, -SPB Menu, -Launcher, -Task manager, -Wireless manager (not in SPB version 3.5), -Weather, -Weather conditions (not in SPB version 3.0.1), -Agenda, -Time, -Telephone Profile, -Profile, -Backlight, -Call logs, -Fav Contacts, -SPB Contacts and -Contact carousel.* You can Change the icon and name for each button. It's also possible to remove the text per button. Without the text, the button is correctly placed (lower) on the menu bar. If 0 buttons is selected, **ShellExtension** automatically removes the recycle bin and makes the screen larger (in landscape wider) So you can put widgets on that space.

### Carousel:

Change the now-screens and tabs in the carousel. You can add, remove or arrange the tabs. Or change the texts of the specified carousel screen.

### Language:

**ShellExtension** supports the language supported by SPB Shell. It uses for 75% the translation of SPB Shell. The extra text specific to ShellExtension is placed in a separate zip file without password. With **ShellExtension** it's possible to change all the text of your choice.

## What ShellExtension does not:

Change menu buttons to programs. The choice of menu buttons is made by SPB. So you cannot make a menu button to your own E-mail program. If you change the menu bar to 0 buttons you can put a widget to you program on the menu-bar place (Blank space).

It can't change the background of the screens. Yes, I know. It's possible to change the background of all the tabs and Professional screen. But there is not a neat way to change them. *(One way is to make a fundatela folder with the background pictures, but if the pictures aren't saved in the correct way, the background will not be shown. Another way is to change the topline of the menu bar. But then there is a problem with the gesture of the screen, when you swipe left and right, or up and down. That's the reason why I didn't put pictures on the tabs. But if there is a programmable way, where we can change the background with **ShellExtension** please let me know)*

Make or change widgets. To make widgets you have to change pictures. And since we don't put extra documents or pictures in the qa\_layouts.dat, **ShellExtension** can't do the widgets things. There are a lot of good Widget makers, like [Vostradamus](#) and [Mskip](#) who are much better in Widget cooking than I am. If you want modified or extra Widgets, go to their websites. I'm sure you find there what you want.

## Definition's

There are a lot of screen name's used by developers. (Different names for the same screens.)

Now-screens:

The Professional screen and Lifestyle screen are Now-screens. It's a screen with more than one page. The height of the page is the same as the device screen height. You can scroll left (previous screen) or right (next screen) with your finger. **ShellExtension** can make more now-screens for you; they all are a subset of the Lifestyle screens. And therefore have the same background.

Hubs:

Win7 Calls the now-screens Hubs while SPB Shell Calls it Now-screens. Because **ShellExtension** is written for the SPB mobile shell, I also call it Now-Screens.

Tabs:

Tabs are Now-screens with one page. But these pages can be larger than the device screen height. You can scroll with your finger up and down. For instance, 'contacts' is a tab. But with **ShellExtension** you can change it to a now-screen. It's therefore I put contacts on the "modify now screens" page (tab) of **ShellExtension**.

...:

The tree dots is, Windows default, for telling you, as user, that there is a input or select screen after You select button where the text is ending with the tree dots. For instance selecting the "Options..." button brings you to the Options screen. While the "Make SPB folders Mutable" executes the function directly.

## Installation

### System Requirements

Of course SPB Mobile Shell 3.x.x needs to be installed. (3.5.5. is the last supported version.)  
You can download a full working demo at <http://spb.com/pocketpc-software/mobileshell/>

**ShellExtension** is written for Windows Mobile Smart phone 6.x Pro, in the program language VB.NET and C#.NET. It relies on the “.NET Compact Framework 3.5”. If this framework is not installed on your Windows Mobile smartphone, than you can download the “.NET Compact Framework 3.5 Redistributable” from de Microsoft website:  
<http://www.microsoft.com/downloads/details.aspx?FamilyID=e3821449-3c6b-42f1-9fd9-0041345b3385&displaylang=en>

Sorry, Non touchscreen smartphones are not supported.

Gesture in **ShellExtension** is only supported in Windows Mobile 6.5 Pro.

### Installing ShellExtension

First ensures that your device is supports the System Requirements.  
For a problem free installation, I recommend to use the **ShellExtension** software on a clean SPB Mobile Shell Install. It has no preconfigured .dat files it change the XML files and registry on the fly. Therefore it looks at specific points in the XMLs or registry to place the extra data in.

Just **extract** the downloaded zip file to a place of your choice on your PDA. It runs perfectly from the memory “SD” card. All the files (ShellExtension.exe, Ionic.Zip.CF.dll and ShellExtensionLoc.Zip) need to be in the same folder. The first time you start **ShellExtension** it registers itself and the dll. That’s all...

What does the files doe?

- ShellExtension.exe is the main program;
- The Ionic.Zip.CF.dll file is the zip library for ShellExtension.exe;
- ShellExtensionLoc.Zip is the language extension for ShellExtension.exe.

### Update ShellExtension

Update an old **ShellExtension** version, just copy the new ShellExtension.exe over the old one. when starting it registers itself. In most cases, you don’t need to update the .dll or the .zip files...

## Uninstall ShellExtension

See: "Restoring qa\_layouts\_bup.dat"

## Updating or reinstalling SPB Mobile Shell

When you decide to reinstall SPB mobile shell, Don't forget to delete the qa\_layouts\_bup.dat file and the **ShellExtension** folders Qa\_layout and ZipToDat. The best way is to delete the entire mobile shell folder before reinstalling. But then you also delete other mods and widgets. So be warned. After reinstalling SPB mobile shell, first run **ShellExtension** to make a fresh backup file of the newly installed qa\_layouts.dat file.

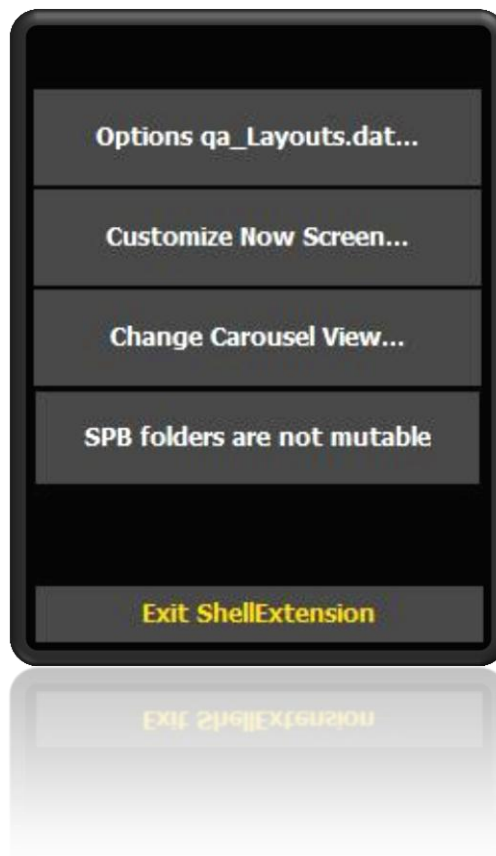
When you update from a prior version of the SPB Mobile shell, delete the qa\_layouts\_bup.dat file and empty the Qa\_layout and ZipToDat folders. You don't want to restore a file from a prior (other) version to your new version. And again, after updating first run **ShellExtension**.

## Getting Started

### Main Window

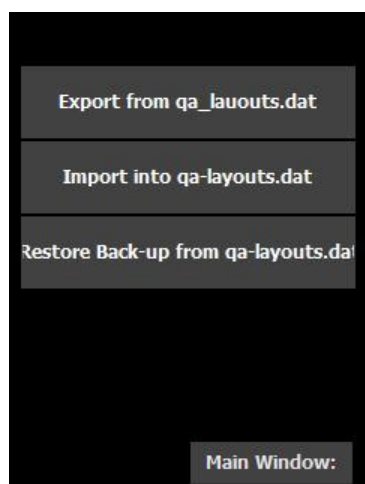
In the main window (first screen you see when starting **ShellExtension**) you can navigate to the specified sections.

- Options Section...
- Customize Now screens...
- Change the carousel view
- Make the SPB folders mutable (or not)
- Exit **ShellExtension**.





## Options Section...



### Extract qa\_layouts.dat

The first time **ShellExtension** starts; it makes two folders, ZipToDat and qa\_layout. The folders can be found in the root folder of the SPB Mobile Shell.

If you want to edit one or more files, compacted in the qa\_layouts.dat, you can extract the entire .dat file to the qa\_layout folder. Edit the file(s) you want. Copy the edited file(s) to the ZipToDat folder, and compact it again with the <Import into qa\_layouts.dat> function.

### How to, Extract the files from qa\_layouts.dat:

- Start **ShellExtension** and select <Options>
- Select <Extract qa\_layouts.dat>
- End **ShellExtension**.
- Go to the qa\_layout folder on your device.
- Compact the file? See Import into qa\_layouts.dat (next section).

### Import into qa\_layouts.dat

The first time **ShellExtension** starts; it makes two folders, ZipToDat and Qa\_layout. The folders can be found in the root folder of the SPB Mobile Shell.

There are two ways to import files into the qa\_layouts.dat file. In both ways you have to put the files, you want to import, into the ZipToDat folder.

Then 1) you can select <Import into qa\_layouts.dat> in the <Options> section of **ShellExtension**.

Or 2) you can exit **ShellExtension**. (If there are files in the ZipToDat Folder and you exit **ShellExtension**, you will be asked to import the files into the qa\_layouts.dat.

In both ways **ShellExtension** uses the correct zip format and password to compact your files. After compacting the files, they will be deleted from the folder, and the SPB software restarts.

### How to, Import a file into qa\_layouts.dat:

- Copy the file into the ZipToDat folder;
- Start **ShellExtension** and select <Options>;
- Select <Import into qa\_layouts.dat>;
- End **ShellExtension**.

Or

- Copy the file into the ZipToDat folder;
- Start **ShellExtension**;
- End **ShellExtension**;
- Respond with "Yes", if **ShellExtension** ask you to import the files.  
(if you respond with "No" the files will be remaining in the folder, unharmed.)

### Restoring qa\_layouts\_bup.dat

The first time you run **ShellExtension** it makes a backup of the original qa\_layouts.dat file. With other words, the back-up file freezes the moment, just before you start **ShellExtension** for the first time. It's named qa\_lauouts\_bup.dat and is located in the root folder of SPB Mobile Shell. With <Restore qa\_layouts\_bup.dat> in the <Options> sections, you can go back to that original file. Please read carefully the important section later-on.

#### How to, go back to the backed-up file:

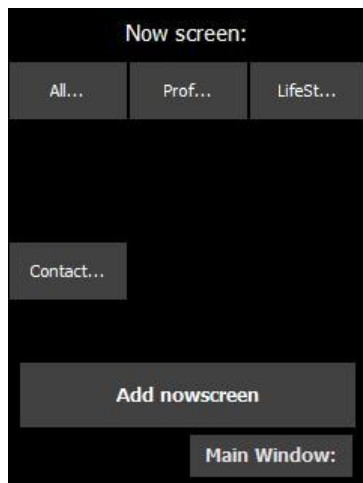
- start **ShellExtension**
- Select <options>
- Select <Restore qa\_layouts.dat>.

### Important, Restoring qa\_layouts\_bup.dat!

When restoring. The currently used qa\_layouts.dat will be removed. And the backed-up version will be renamed, from qa\_layouts\_bup.dat to ga\_layouts.dat. After that, **the registry settings** from extra Now screens **will also be removed.**

Attention! if you modify the shell with extra now screens, and after that deleting the backup file, and start **ShellExtension** again. The newly made backup file will have the extra screens in it. If you then restore, the (last) backup file, the extra now screens will be in the qa\_layouts.dat file but not in the registry. This situation is harmless and it will not block the shell in any way. But it's not the way I designed it.

## Customize Now screens...



With the default now-screens.



Six extra now-screens. F.i. Sport, Pictures, Games, Music, Marketplace and Office.



Tools folder with the six extra now-screens.(and there icons)



### All...

By selecting All... you can change the menu bar settings of all the now-screens at once. *Than all the now-screens uses the same menu bar. If you want a different menu-bar for, for instance the Lifestyle screen, then select <Lifestyle> <modify the menu bar>.*

### Prof... (Professional now-screen)

This is a now screen made by SPB.

You can switch it off (page count 0) or on (page count >0), change the page count (from 1 to 99?) and change the menu-bar buttons (from 0 to 4 buttons). If you want the same menu-bar for all the now-screens then select <all...><modify the menu bar>. Select the Professional button, brings you to the now screen settings page. See: "Now screens settings"

### LifeSt... (Lifestyle now-screen)

Same as Professional now screen.

### New (now screens)

Same as Lifestyle now screen, except you can also remove these screens.

### Contact... (Contacts tab)

This is originally not a now screen but a tab.

With **ShellExtension** you can change it into a "now screen" by adding extra pages. (*That's why I placed it on this page.*)

By adding more than one page the gesture left and right to other screens are removed. Selecting one page brings back the gesture (*left to "Call History" and right to "Contacts"*). You can't remove the tab or change the menu-bar. When selecting Contacts you can change the dialer contacts. See "Change dialer contacts..."

### Add now screens

Does what it says, add extra Now screens. You can add, up to 6 extra now screens. When you add a new now screen you can give it the name you want (visible in the carousel) and it's Icon (visible in the tools menu).

The extra now screen is a subset of the lifestyle screen. Therefore it uses the same background (pity). But it also has an advantage. If you also use the Professional now screen, a gesture up or down brings you always to the Professional screen! You also can change the Page count and menu-bar of the newly created now-screen by **ShellExtension**.

See also "Change the text of buttons, now-screens and carousel-screens."

A preset of 6 buttons gives you the name and corresponding icon, The presets are the same as the Mobile 7 hubs: Friends, Games, Money, Multimedia, Pictures and Office.

**How to, add a now screen “Sports” with 6 pages:**

- select <Customize now screens...>;
- select <add now screen> (a new screen will be made.);
- select <text field> add the text “Sports”;
- select <Icon field> add if known, the icon code;
- select <new?> (the newly made now screen);
- select <page count in new?>;
- select <6>;
- select <main page>;
- select <Exit **ShellExtension**>;
- select <Restart the shell>.

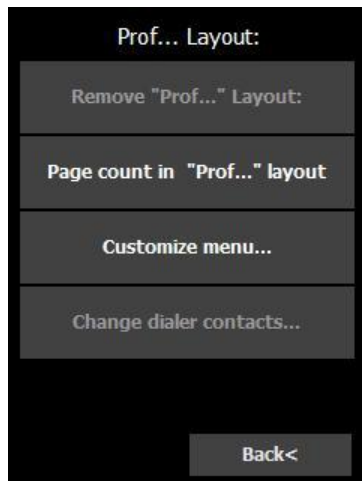
**How to, delete the new4 now screen:**

- select <Customize now screens...>
- select <new4>
- select <delete now screen new4>

## Now screens settings

This screen will be shown, after you select:

- a now screen on the 'change the now screens' page;
- for example <Prof...>.



### Remove now screen

You only can remove the 'new' now screens. It is not possible to remove the professional or lifestyle now screens. If you want to remove them, you can set there page count to 0. The contact's tab can't be removed at all.

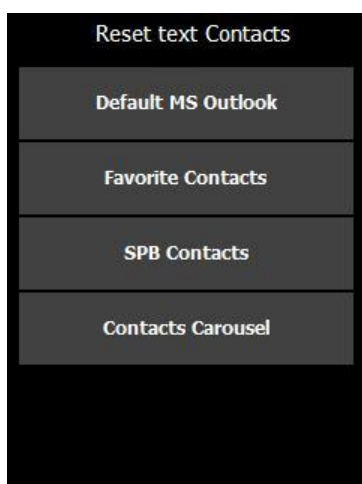
### Page count in ...

It's possible to set the page count of all the now screens and the contacts tab individually. If you want more than the nine screens (with the buttons) you can enter the page count in the textbox on the right top. You can go to 99 pages (not tested).

See "Contact... (Contacts)" for the special behavior of the contacts tab with one page.

### Customize menu...

Brings you to the customize menu bar page. See "Customize menu..."



### Change dialer contacts...

This is a special feature. It's not directly related with the SPB mobile shell. At the moment you call someone you are in the dialer screen of your mobile device. On that screen there is a button 'Contacts'. With **ShellExtension** you can change the behavior of that Contacts button.

You can change it to:

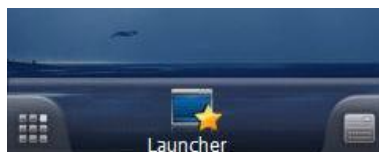
- Outlook contacts (default device);
- Favorites contacts (by SPB);
- Contacts (by SPB);
- Contact carousel (by SPB).

## Menu bar button count examples:

Screens 240x320



Zero buttons with clock widget



One button



Two buttons



Tree Buttons



Four buttons



Four buttons without text.  
"No text" is possible in all button count versions. (1 button to 4)

Screens 240x240, 320x240



No buttons



One button



Two buttons



Tree buttons

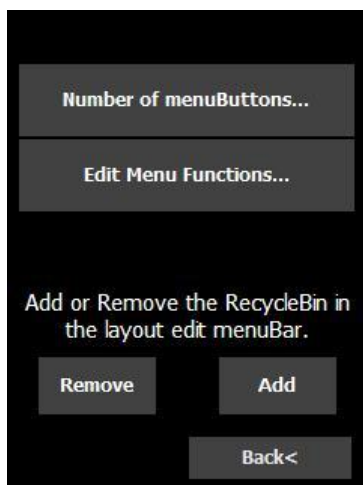


Four buttons

## Customize menu bar:

This screen will be shown, after you select:

- <change the menu bar>;
- on the now screen settings page. (see Now screens settings page)



### Change button count on menu bar.

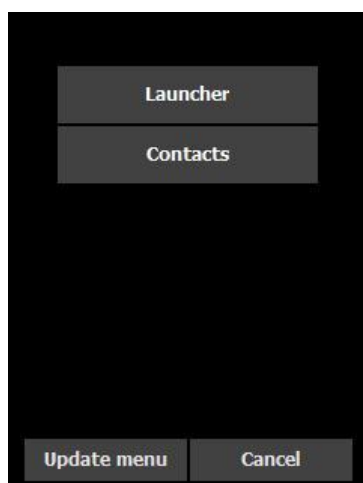
**ShellExtension** can change the count of menu bar buttons from zero to four. If you select zero buttons then **ShellExtension** does not only remove the buttons from the menu bar, it also removes the menu bar background, the recycle bin and changes the screen height or weight. In that way, you can put widgets on the space where the menu bar was.

### Edit the menu button('s) function.

After selecting more than zero buttons then **ShellExtension** will automatically select "Edit menu function..." for you (the next screen).

### Disable the recycle bin.

If you select one to four buttons for your menu bar, you can separately remove the recycle. If you ask me, the recycle bin has no use; there are other convenient ways to remove widgets, so I always remove the bin.



### Edit the menu button('s) function screen

If you like the **ShellExtension** default then select <Update menu> (In this screen shot two buttons with the default text "Launcher" and "Contacts").

The top button is the left or top button in the menu bar.

Selecting <Update menu> gives you the Two buttons version in the "Menu bar button count examples". See page 18

If do not like them, you can change the menu function by selecting the button you want to change.

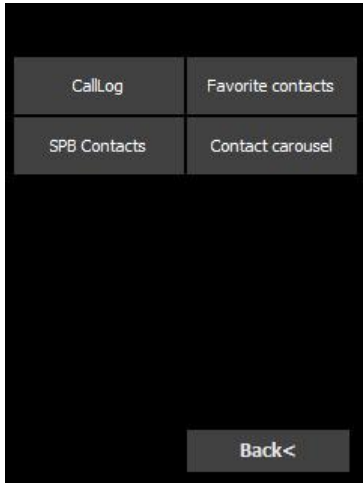
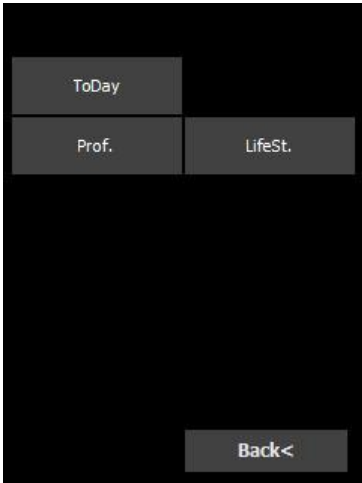
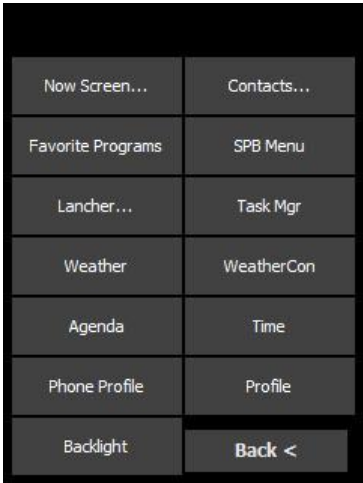
In the following screen "change button function" you can select the button you want. See "Change the text of buttons, now-screens and carousel-screens."



### Change menu bar button function or add carousel screen.

*This screen will be shown, after you select:*

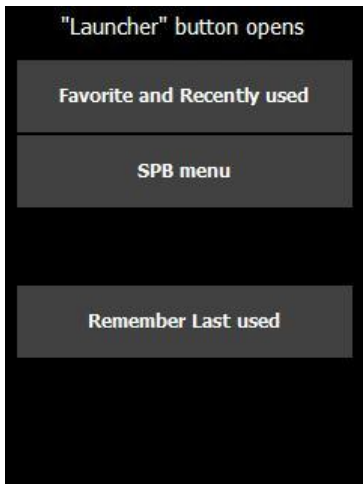
- <change the menu bar>;
  - <change the button function>;
  - on the now screen settings page.
- OR
- <change the carousel>;
  - on the main window



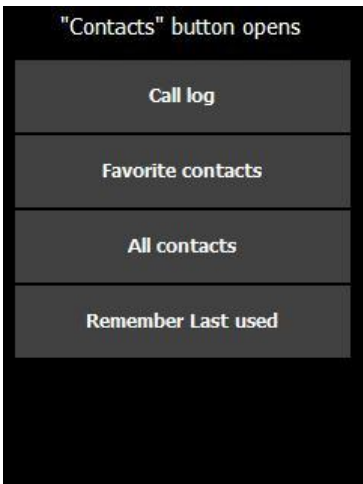
The left screen shown is the first screen. By selecting “now screens...” you select the second shown screen. By selecting “Contacts...” the third screen is shown. The back buttons on the second and third screen brings you to the first screen.

If you have Windows Mobile 6.5 then the gesture function works. Then you can select the other screens by sweeping your finger left or right.

If you are in the “Edit Menu Function” mode and you have SPB Mobile shell 3.5 or higher, then the buttons “Launcher” and “Favorite Contacts...” has special behavior. By selecting these buttons, you get a second screen. “Launcher” or “Contacts” button opens:



These are the two special menu bar button functions screens.  
(Not available in carousel mode)



Selecting a menu button function not ending with tree dots, or after selecting a button on the special screens (“Launcher” or “Contacts” button opens), you get the button modify screen. With this screen you can change the text or icon of the menu bar function. See “Change the text of buttons, now-screens and carousel-screens.”

## Find your icon number:

10 11 12 13 14 15 16 17 18 19 20 21 22 23 24 25 26 27



This are the buttons you can select in the Change the text of buttons, now-screens and carousel-screens.

The icon number is a tree digit number starting with the top bar (2 digits) en ending with the right bar (1 digit). For Example, if you want to know the number of the launcher:



then you find the icon in the 21<sup>th</sup> column and on the 6<sup>th</sup> row. Therefor the icon number is 216.

The default numbers are:

Time	135	column 13 row 5
Backlight	142	(no correct icon available)
Launcher	216	
SPB Menu	182	
Agenda	101	
TaskManager	124	
Weather	218	
WirelessManager	173	(3.1 version of SPB mobile shell)
Profiles (phone)	177	
Profile Editor	124	(no correct icon available)
Today	197	
Professional nowscr.	197	
Lifestyle now-screen	198	
Extra now-screens	195	
Callog	202	
Favorite Contacts	217	
SPB Contacts	109	
Contact carousel	139	

## Change the text of buttons, now-screens and carousel-screens.

There are three ways to get this screen:

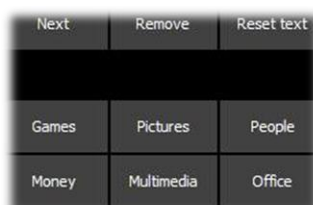
1. By adding a new now screen. *Than you can change the name of the newly created now-screen and its icon of its shortcut (displayed in the SPB Tools menu).*
2. By adding a carousel screen. *Than you can change the name of the carousel tiles.*
3. After changing the menu bar button function. *Than you can change the name of the button and its icon (displayed in the SPB Tools menu).*



*'Change button Function' mode.*



*In 'carousel' mode, the icon number box is not visible.*



*In 'add now-screen' mode, you get six special buttons.*

### Change Text

In the left text edit field you can change the text of the newly created now-screen, the carousel screen or the name of the menu bar button. (The text under the menu bar button.)

To clear the text field you can select the **<Remove>** button. In case of the menu bar button you can leave the box empty. Then there is no text under the specified button See the last button count example. On page 16.

#### Caution!

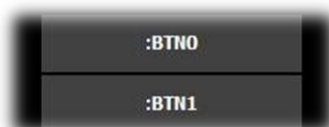
By default SPB Mobile Shell translate the text for the carousel screens and menu bar buttons from English (SPB default) to the language you selected in SPB Mobile Shell. If you change the text to your own text, then the translation can't be done anymore. If you want to turn back to the default SPB English text, than select **<Reset text>**. In the "add now-screen" mode **<Reset text>** gives you the original Text (NewX) and Icon(195).

### Change Icon nr.

You can change the icon of the menu bar button or the extra now-screen shortcut by entering the Icon nr. In the right edit field. Sorry you have to know the number of the button. Not all Icons are supported by SPB.

*Therefore some buttons are not the buttons you expected for the function. I tried to select the icon closed to the specified function. See also 'Find your icon number:*

*The buttons is identified by the button text. If you don't want text under the button, than SE changes the identification of that button to the Button number (first button is :BTN0).*



**How to, Give all the now screens the same menu-bar:**

- select <Modify the now screens...>;
- select <All...>;
- Change the settings you want.

**How to, Give the new3 now screen a different menu-bar than the other now screens:**

- select <Modify the now screens...>;
- select <new3>;
- Change the settings you want.



Carousel tiles view with the six extra now screens.

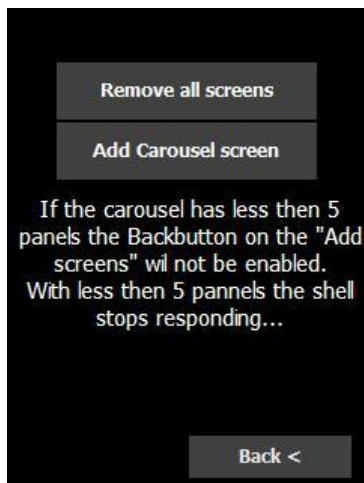


3D view with 3 of the extra now screens.



Tools folder with the six extra now screens.

## Change the carousel view



If you want extra screens to the carousel, than you select **<Add carousel screen...>**. The next screen is Change the text of buttons, now-screens and carousel-screens.

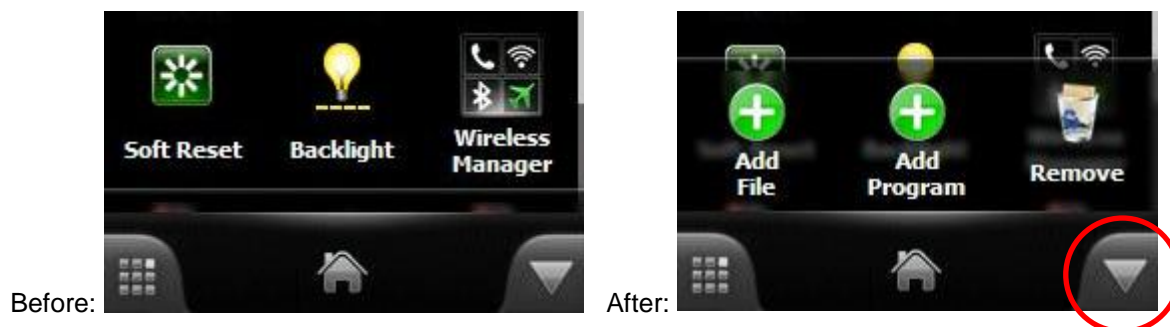
The added screen is placed at the end of the carousel. You can add as much screens as you like. They are placed in the order you select them. By this way, you can reorder the screens in the carousel. First select **<Remove all screens>** and then pick the screens you like. In the order you like.


After selecting **<Remove all screens>** the **<Back>** button is grayed out (not selectable). After selecting 5 screens the button is normal again. SPB mobile shell crashes if the count of screens is less than 5.

### How to, add carousel screens in the order I like:

- Start **ShellExtension**
- select **<Change the carousel view...>**;
- select **<Remove all screens>** (*back button is grayed out*);
- select **<Add carousel screen>**;
- select at least 5 screens of your choice;
- the first screen you select is the first screen in the carousel;
- each time you select a new carousel view screen, you can give it a name of your choice;
- select **<Back>**
- select **<Back>**
- End **ShellExtension**, *If you do not restart the mobile shell, some screens are empty.*  
*After selecting the screens in the carousel view, the screens are filled.*

## Make the SPB folders mutable (or not)



By default it's not possible to change the SPB folders in the SPB mobile shell. (For example the tools folder.) With **ShellExtension** it's possible to change these folders to mutable folders. In that mode you see extra buttons (add file, add program and Remove) under the folder change button  (most right menu bar button) With these buttons enabled you can add documents or programs to that SPB folder or remove them.

### How to, add **ShellExtension** to the tools menu:

- Start **ShellExtension**
- select <Make SPB menus mutable>
- End **ShellExtension**, you don't need to restart the mobile shell;
- Then select <Launcher>;
- select <SPB menu> (right button);
- Select <Tools>;
- select <Change menu> (Most right menu button);
- Select <Add File> (**ShellExtension** is not in the programs folder);
- select <Select **ShellExtension** from where you installed it>;
- done!

## Language Packs

### Language overview:

**ShellExtension** uses two language packs (in a row).

First it uses the default SPB shell language pack. But not all the text of **ShellExtension** is translated in this pack. Therefore I made an extra Language pack, in the same folder as **ShellExtension**. This one can translate all the text.

Because it translates the text buttons for the Second time, it overrides the first translation of the default SPB language pack.

The Extra Language pack uses the following format.

Original text|New text.

Do not change the File format. **ShellExtension** looks for a Zip file named ShellExtensionLoc.Zip and with the files ShellExtension\_xx.txt in it. (xx is the language code "en" for English) The txt files in the Zip must be saved as "Unicode" because some languages use special chars.

### Walk true to make your own translation:

- Download the Excel document from the website;
- Look for the column "Org\_Text" (this is the column with all the text used by **ShellExtension**);
- Insert a free column after the column with the "|" Char;
- Make in the new inserted column your translation (*if the text in the default SPB file is already correct, don't translated it again, remove that line. Extra translations slows down the startup of **ShellExtension***);
- Copy the text from the tree column's (Org\_text, "|", Your\_text) to the correct txt file. (for English use the ShellExtension\_en.txt file;
- Save the txt file as unicode;
- Zip the txt file into the received Zip (ShellExtensionLoc.zip and *Without any password.*);
- Cut or copy the Zip into the same folder as **ShellExtension.exe**;
- Upload your translation to the website. (*So that fellow users of **ShellExtension** can benefit from your hard work. I Will update the Loc.Zip file on the website.*)



## Credits

In the 2009 summer holidays, I started to program **ShellExtension** after reading the tips and tricks on Zeppiii's threat on the XdaDefelopers forum. At first I made it for my own use. When I read that a lot of Xda visitors did have trouble using the tips and tricks on this threat, I decided to place my piece of work as a free download for them. The more than 12,000 downloads is telling me that **ShellExtension** is a great success.

It's correct that not all the stuff in **ShellExtension** is my idea I just put it in the easy to use program. I really don't know from whom I had witch tip and/or trick. I am sure they posted it at Zepiii's threat. Thanks for that...

A special thank goes to **Zeppiii** and **XdaDevelopers** for giving me the platform to show **ShellExtension** to the world.

**Zyrocco** for testing, reporting and the first (French) translation.

**Dancer\_69** to troubleshoot **ShellExtension** with his type of Windows Mobile 6.5 ROM. and the first (Greek) translation.

**Vostradamus** to advise people (on other sites) to use **ShellExtension** if they had trouble with zipping the qa\_layouts.dat.

Translations:

Franch	Zyrcco
Dancer_69	Greek